



**ENGINEERING DATA**

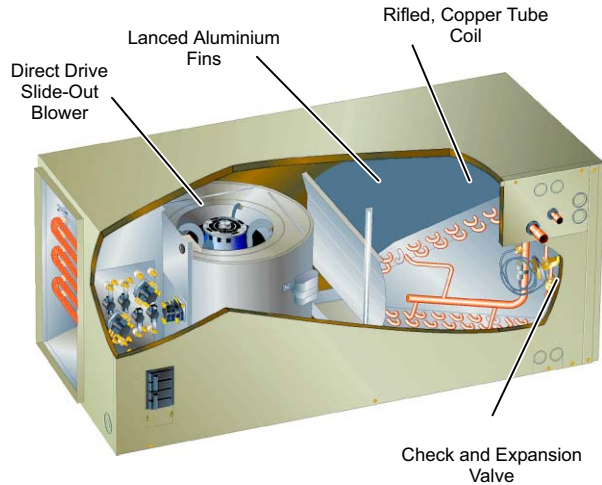
**BLOWER COIL UNITS**

**CB28UH**

**MERIT® SERIES**

**Up-Flow / Horizontal  
Nominal Capacity - 1.5 to 5 Tons  
Optional Electric Heat - 2.5 to 30 kW**

Bulletin No. 210383  
July 2003



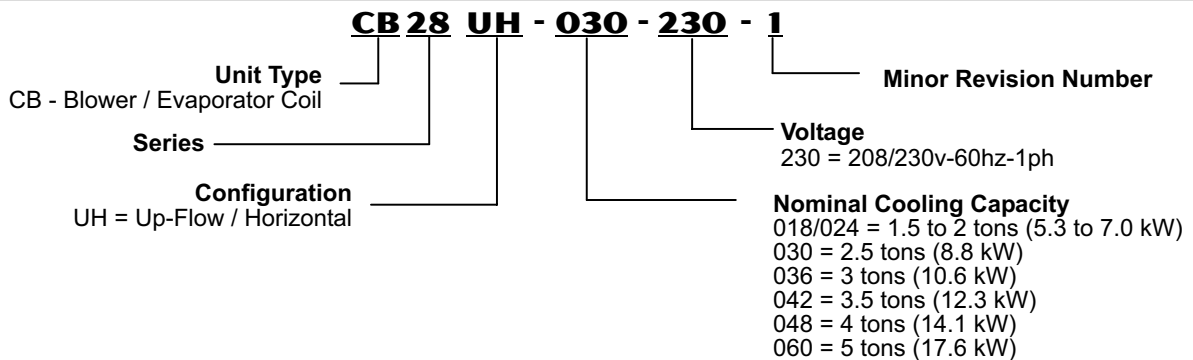
**CB28UH  
Horizontal Left Hand Position  
(With Optional Electric Heat)**



**CB28UH  
Up-flow Position  
(With Optional Electric Heat)**



**MODEL NUMBER IDENTIFICATION**



**FEATURES**

Blower Data ..... Page 6  
Dimensions ..... Pages 11-16  
Electric Heat Data ..... Pages 5-7  
Features ..... Pages 1-2  
Installation Clearances ..... Page 5  
Model Number Identification ..... Page 1  
Optional Accessories ..... Page 3  
Specifications ..... Page 4

**APPLICATIONS**

1.5 to 5 ton (5.3 to 17.6 kW) nominal sizes.  
Up-flow or horizontal applications.  
Applicable to expansion valve systems in cooling applications and check and expansion valve systems in heat pump applications. Wide range check and expansion valve factory installed. See Condensing Unit bulletins in section Cooling Units - Condensing Units for cooling capacities. See Heat Pump Outdoor Unit Bulletins in section Heat Pump Outdoor Units for cooling and heating capacities. Optional field installed electric heaters available in several sizes for additive heating capacity.

Visit us at [www.lennox.com](http://www.lennox.com).  
For the latest technical information, [www.lennox-davenet.com](http://www.lennox-davenet.com).

NOTE - Due to Lennox' ongoing commitment to quality, Specifications, Ratings and Dimensions subject to change without notice and without incurring liability. Improper installation, adjustment, alteration, service or maintenance can cause property damage or personal injury. Installation and service must be performed by a qualified installer and servicing agency.

## FEATURES

### WARRANTY

All covered components - limited warranty for five years in residential applications, one year in non-residential applications. Refer to Lennox Limited Warranty Certificate included with each unit for additional details.

### APPROVALS

Tested with matching condensing and heat pump units in the Lennox Research Laboratory environmental test room in accordance with ARI Standard 210/240-94.

Optional electric heaters rated in accordance with US Department of Energy (DOE) test procedures and Federal Trade Commission (FTC) labeling regulations.

Blower performance data according to unit tests conducted in Lennox air test chamber.

Blower-coil units are UL Listed to US and Canadian safety standards and components within are bonded for grounding to meet safety standards for servicing required by CEC and NEC.

ISO 9001 Registered Manufacturing Quality System.

### CABINET

Constructed of heavy-gauge galvanized steel.

Completely insulated with thick fiberglass insulation.

Pre-painted steel cabinets have mildly textured enamel finish with primer coat on unpainted side of all panels.

No external screw heads on sides of cabinet for tight installations without damage to walls or woodwork.

Removable panel provides complete service access.

Electrical inlets provided in top of cabinet. See dimension drawings for location.

### Dual Position Drain Pans

Drain pans designed for up-flow or horizontal applications.

Deep, corrosion resistant plastic drain pans have dual pipe drains. See dimension drawings.

### BLOWER

Lennox designed and built direct drive blower.

Statically and dynamically balanced before installation in unit.

Resiliently mounted multi-speed motor.

Choice of blower speeds. See blower performance tables.

Speed changes easily accomplished by a simple wiring change.

Blower slides out of cabinet for servicing.

## OPTIONAL ACCESSORIES - MUST BE ORDERED EXTRA

### SINGLE-POINT POWER SOURCE CONTROL BOX

Control Box can be used with optional electric heat when single power supply is connected to multi-circuit electric heat.

Field installs external to the unit cabinet on either side or top.

Constructed of heavy gauge steel, baked enamel finish, prepunched mounting holes, electrical inlet knockouts, and terminal strip.

Removeable cover provides easy access.

Dimensions - 7 x 7 x 4 in. deep (178 x 178 x 102 mm).

### CABINET

#### Side Return Unit Stand (Optional for Up-Flow Only)

Raises unit 16 in. (406 mm) above floor for side return air duct connection.

Eliminates need for wooden platform construction.

All aluminum construction.

Two adjustable frames fit all sizes.

See dimension drawing.

#### Wall Hanging Bracket Kit (Optional for Up-Flow Only)

Allows unit to be hung on wall at any height.

Consists of heavy gauge steel support brackets (one for blower coil unit, one for wall mount).

Screws furnished for fastening one bracket to unit.

Bolts for fastening one bracket to wall are field provided.

#### Filter Base for Bottom Return Air Applications

Hinged, gasketed door for easy filter access.

Completely insulated cabinet.

Uses 1, 2, or 4 in. (25, 51, or 102 mm) thick, standard size filters (field provided).

### REFRIGERATION SYSTEM

#### Copper Tube/Enhanced Fin Evaporator Coil

Lennox designed and fabricated twin coils.

Assembled in "A" configuration.

Provides extra large surface and contact area, excellent heat transfer and low air resistance for maximum efficiency.

Precise circuiting for uniform refrigerant distribution and increased dehumidification.

Precisely spaced ripple-edged aluminum fins fitted to durable seamless copper tubes.

Fins are strengthened to resist bending and are equipped with collars that grip tubing for maximum contact area.

Lanced fins provide maximum exposure of fin surface to air stream.

Long life copper tubing easy to service.

Rifled tubing provides superior heat transfer.

Flared shoulder tubing joints and silver soldering provide tight, leakproof joints.

Coil thoroughly factory tested under high pressure to insure leakproof construction.

#### Refrigerant Line Connections

Suction (vapor) and liquid lines have sweat connections.

Extended outside of the cabinet for ease of connection.

See dimension drawings for locations.

#### Check and Expansion Valve Furnished

Wide range valve.

Chatleff style fitting.

Factory installed on all models internal to cabinet.

### TRANSFORMER AND BLOWER COOLING RELAY

24 volt transformer with fuse and blower cooling relay furnished as standard.

Factory installed in the unit control box.

### FILTER

Disposable frame type filter furnished and factory installed in rails in cabinet.

See Specifications tables for sizes.

### ELECTRIC HEAT

Field install internal to unit cabinet.

Available in several voltages and kw sizes.

Available in terminal block and circuit breaker models.

See Electric Heat tables.

Helix wound nichrome heating elements exposed directly in air stream resulting in instant heat transfer, low element temperatures and long service life.

Each element equipped with accurately located limit control with fixed temperature off setting and automatic reset.

Supplemental thermal cutoff limit control, provides positive protection in case of excessive temperatures.

Thermal sequencer relay brings elements on and off line, in sequence and equal increments, with time delay between each.

Initiates and terminates blower operation.

Heating control relay(s) furnished as standard.

Control box and access cover constructed of heavy-gauge galvanized steel.

Factory assembled with controls installed and wired.

Electric heat low voltage controls plug-in to blower coil unit.

#### Circuit Breaker Models

ECB29-5CB, -6CB, -8CB, -9CB, -10CB, -12.5CB, -15CB, -20CB, -25CB and -30CB (208/240v-1ph) and ECB29-15CB, -20CB and -25CB (208/240v-3ph) heaters are equipped with circuit breakers for overload and short circuit protection.

Factory wired and mounted on electric heat unit.

Current sensitive and temperature actuated.

Manual reset.

Circuit breakers qualify as disconnect means at unit in many areas, eliminate the need for field provided disconnect.

Consult local electrical code in your area.

## SPECIFICATIONS

General Data		Model Number	CB28UH-018/024	CB28UH-030	CB28UH-036
		Nominal tonnage	1.5 - 2	2.5	3
Connections	Suction (vapor) line (o.d.) - in. (mm) sweat		5/8 (16)	3/4 (19)	3/4 (19)
	Liquid line (o.d.) - in. (mm) sweat		3/8 (9.5)	3/8 (9.5)	3/8 (9.5)
	Condensate - in. (mm) fpt		(2) 3/4 (19)	(2) 3/4 (19)	(2) 3/4 (19)
Evaporator Coil	Net face area - ft. <sup>2</sup> (m <sup>2</sup> )		3.11 (0.29)	3.56 (0.33)	4.44 (0.41)
	Tube outside diameter - in. (mm)		3/8 (9.5)	3/8 (9.5)	3/8 (9.5)
	Number of rows		2	2	2
	Fins per inch (fins per m)		14 (551)	14 (551)	14 (551)
Blower	Wheel nominal diameter x width - in. (mm)		10 x 7 (254 x 178)	10 x 7 (254 x 178)	10 x 8 (254 x 203)
	Blower motor output - hp (W)		1/5 (149)	1/3 (249)	1/3 (249)
<sup>1</sup> Filters	Size of filter - in. (mm)		15 x 20 x 1 (381 x 508 x 25)	15 x 20 x 1 (381 x 508 x 25)	20 x 20 x 1 (508 x 508 x 25)
Electrical Data (60hz)	Voltage - phase		208/230 - 1	208/230 - 1	208/230-1
	Minimum circuit ampacity (unit only)		2	3	3
	<sup>2</sup> Maximum overcurrent protection (unit only)		15	15	15
Shipping Data -1 package	lbs. (kg)		121 (55)	123 (56)	156 (71)

## OPTIONAL ACCESSORIES - MUST BE ORDERED EXTRA

Electric Heat		2.5 to 30 kW - See Electric Heat Data tables			
Filter Base	3 in. (76 mm) base height 1 or 2 in. thick filters (25 or 51 mm)	Catalog Number	<b>32X54</b>	<b>32X54</b>	<b>32X55</b>
		Model Number	ACE1620-3	ACE1620-3	ACE2020-3
	6 in. (152 mm) base height 1, 2, or 4 in. thick filters (25, 51, or 102 mm)	Catalog Number	<b>62N00</b>	<b>62N00</b>	<b>62N01</b>
		Model Number	ACE1620-6	ACE1620-6	ACE2020-6
		Cabinet Size W x D - in. (mm)	17-3/8 x 22 (441 x 559)	17-3/8 x 22 (441 x 559)	21-3/8 x 22 (543 x 559)
		Size of field provided filter - in. (mm)	16 x 20 (406 x 508)	16 x 20 (406 x 508)	20 x 20 (508 x 508)
Side Return Unit Stand (Up-Flow Only) - Ship. weight - lbs. (kg)			<b>45K31</b> - 5 (2)	<b>45K31</b> - 5 (2)	<b>45K32</b> - 6 (3)
Single Point Power Source Control Box (2 or 3 circuits) Shipping weight - lbs. (kg)			- - -	<b>21H39</b> - 5 (2)	<b>21H39</b> - 5 (2)
Wall Hanging Bracket Kit (Up-Flow Only) - Ship. wt. - lbs. (kg)			<b>45K30</b> - 3 (1)	<b>45K30</b> - 3 (1)	<b>45K30</b> - 3 (1)

<sup>1</sup> One disposable frame type filter furnished.

<sup>2</sup> HACR type breaker or fuse.

## SPECIFICATIONS

General Data		Model Number	CB28UH-042	CB28UH-048	CB28UH-060
		Nominal tonnage	3.5	4	5
Connections	Suction (vapor) line (o.d.) - in. (mm) sweat		7/8 (22.2)	1-1/8 (28)	1-1/8 (28)
	Liquid line (o.d.) - in. (mm) sweat		3/8 (9.5)	3/8 (9.5)	3/8 (9.5)
	Condensate - in. (mm) fpt		(2) 3/4 (19)	(2) 3/4 (19)	(2) 3/4 (19)
Evaporator Coil	Net face area - ft. <sup>2</sup> (m <sup>2</sup> )		4.44 (0.41)	5.0 (0.46)	5.0 (0.46)
	Tube outside diameter - in. (mm)		3/8 (9.5)	3/8 (9.5)	3/8 (9.5)
	Number of rows		3	3	3
	Fins per inch (fins per m)		12 (472)	12 (472)	12 (472)
Blower	Wheel nominal diameter x width - in. (mm)		10 x 9 (254 x 229)	11-1/2 x 9 (292 x 229)	11-1/2 x 9 (292 x 229)
	Blower motor output - hp (W)		1/2 (373)	3/4 (560)	3/4 (560)
<sup>1</sup> Filters	Size of filter - in. (mm)		20 x 20 x 1 (508 x 508 x 25)	20 x 22 x 1 (508 x 559 x 25)	20 x 22 x 1 (508 x 559 x 25)
Electrical Data (60hz)	Voltage - phase		208/230 - 1	208/230 - 1	208/230 - 1
	Minimum circuit ampacity (unit only)		6	6	6
	<sup>2</sup> Maximum overcurrent protection (unit only)		15	15	15
Shipping Data -1 package	lbs. (kg)		160 (73)	181 (83)	181 (83)

## OPTIONAL ACCESSORIES - MUST BE ORDERED EXTRA

Electric Heat		2.5 to 30 kW - See Electric Heat Data tables			
Filter Base	3 in. (76 mm) base height 1 or 2 in. thick filters (25 or 51 mm)	Catalog Number	<b>32X55</b>	<b>32X55</b>	<b>32X55</b>
		Model Number	ACE2020-3	ACE2020-3	ACE2020-3
	6 in. (152 mm) base height 1, 2, or 4 in. thick filters (25, 51, or 102 mm)	Catalog Number	<b>62N01</b>	<b>62N01</b>	<b>62N01</b>
		Model Number	ACE2020-6	ACE2020-6	ACE2020-6
		Cabinet Size W x D - in. (mm)	21-3/8 x 22 (543 x 559)	21-3/8 x 22 (543 x 559)	21-3/8 x 22 (543 x 559)
		Size of field provided filter - in. (mm)	20 x 20 (508 x 508)	20 x 20 (508 x 508)	20 x 20 (508 x 508)
Side Return Unit Stand (Up-Flow Only) - Ship. weight - lbs. (kg)			<b>45K32</b> - 6 (3)	<b>45K32</b> - 6 (3)	<b>45K32</b> - 6 (3)
Single Point Power Source Control Box (2 or 3 circuits) Shipping weight - lbs. (kg)			<b>21H39</b> - 5 (2)	<b>21H39</b> - 5 (2)	<b>21H39</b> - 5 (2)
Wall Hanging Bracket Kit (Up-Flow Only) - Ship. wt. - lbs. (kg)			<b>45K30</b> - 3 (1)	<b>45K30</b> - 3 (1)	<b>45K30</b> - 3 (1)

<sup>1</sup> One disposable frame type filter furnished.

<sup>2</sup> HACR type breaker or fuse.

## BLOWER DATA

### CB28UH-018/024 BLOWER PERFORMANCE (208/230V)

External Static Pressure		Air Volume and Motor Watts at Specific Blower Taps								
		High			Medium			Low		
in. w.g.	Pa	cfm	L/s	Watts	cfm	L/s	Watts	cfm	L/s	Watts
.00	0	1025	485	375	885	415	305	690	325	240
.05	10	1010	480	370	880	415	305	690	325	240
.10	25	995	470	365	870	410	300	685	325	240
.15	35	975	460	360	855	405	295	680	320	235
.20	50	955	450	350	840	395	290	670	315	230
.25	60	935	440	345	825	390	280	660	310	230
.30	75	910	430	335	805	380	275	645	305	225
.40	100	855	405	320	750	355	255	605	285	210
.50	125	790	375	305	690	325	240	555	260	195
.60	150	720	340	290	615	290	220	495	235	180
.70	175	635	300	270	530	250	205	420	200	165
.75	185	595	280	260	485	230	195	380	180	160

NOTE — All air data is measured external to unit with air filter in place. Electric heaters have no appreciable air resistance.

### CB28UH-030 BLOWER PERFORMANCE (208/230V)

External Static Pressure		Air Volume and Motor Watts at Specific Blower Taps								
		High			Medium			Low		
in. w.g.	Pa	cfm	L/s	Watts	cfm	L/s	Watts	cfm	L/s	Watts
.00	0	1210	570	445	1105	520	400	980	465	370
.05	10	1200	565	445	1100	520	395	980	460	370
.10	25	1185	560	440	1095	515	390	975	460	365
.15	35	1170	550	430	1080	510	385	965	455	360
.20	50	1150	540	425	1065	500	375	955	450	350
.25	60	1125	530	420	1045	495	370	940	445	340
.30	75	1100	520	410	1020	480	360	920	435	330
.40	100	1035	490	390	960	455	335	870	410	310
.50	125	955	450	370	890	420	315	805	380	285
.60	150	865	410	350	800	380	290	725	345	260
.70	175	760	360	325	695	330	265	635	300	235
.75	185	705	335	315	640	300	250	580	275	225

NOTE — All air data is measured external to unit with air filter in place. Electric heaters have no appreciable air resistance.

### CB28UH-036 BLOWER PERFORMANCE (208/230V)

External Static Pressure		Air Volume and Motor Watts at Specific Blower Taps								
		High			Medium			Low		
in. w.g.	Pa	cfm	L/s	Watts	cfm	L/s	Watts	cfm	L/s	Watts
.00	0	1495	705	650	1110	525	510	895	420	415
.05	10	1485	700	640	1120	530	510	910	430	415
.10	25	1475	695	625	1130	530	510	920	435	410
.15	35	1460	690	615	1130	535	510	925	435	400
.20	50	1445	680	600	1130	535	505	930	440	390
.25	60	1425	670	585	1130	535	475	930	440	380
.30	75	1405	660	570	1125	530	465	925	435	370
.40	100	1355	640	540	1100	520	435	905	425	350
.50	125	1295	610	510	1060	500	405	870	410	330
.60	150	1230	580	480	1010	475	380	820	385	310
.70	175	1150	545	450	945	445	350	750	355	290
.75	185	1110	525	435	905	430	335	715	335	280

NOTE — All air data is measured external to unit with air filter in place. Electric heaters have no appreciable air resistance.

### CB28UH-042 BLOWER PERFORMANCE (208/230V)

External Static Pressure		Air Volume and Motor Watts at Specific Blower Taps								
		High			Medium			Low		
in. w.g.	Pa	cfm	L/s	Watts	cfm	L/s	Watts	cfm	L/s	Watts
.00	0	1750	825	725	1495	705	580	1250	590	520
.05	10	1740	820	720	1495	705	580	1255	595	520
.10	25	1725	815	710	1490	700	575	1255	590	500
.15	35	1700	805	700	1475	695	565	1250	590	490
.20	50	1675	790	690	1460	690	550	1235	585	475
.25	60	1645	775	680	1435	675	535	1220	575	460
.30	75	1610	760	665	1405	665	520	1200	565	445
.40	100	1525	720	635	1335	630	490	1140	540	415
.50	125	1420	670	605	1245	585	455	1065	505	385
.60	150	1295	610	570	1135	535	420	970	455	355
.70	175	1155	545	535	1000	470	380	850	400	325
.80	200	995	470	495	850	400	345	715	340	295
.85	210	905	430	475	765	360	325	640	300	280

NOTE — All air data is measured external to unit with air filter in place. Electric heaters have no appreciable air resistance.

### CB28UH-048 BLOWER PERFORMANCE (208/230V)

External Static Pressure		Air Volume and Motor Watts at Specific Blower Taps								
		High			Medium			Low		
in. w.g.	Pa	cfm	L/s	Watts	cfm	L/s	Watts	cfm	L/s	Watts
.00	0	2050	970	1005	1785	845	800	1590	750	660
.05	10	2030	955	990	1770	835	795	1570	740	655
.10	25	2005	945	980	1750	825	785	1550	735	650
.15	35	1975	935	970	1730	815	775	1530	725	645
.20	50	1950	920	955	1710	805	765	1510	715	640
.25	60	1920	905	940	1685	795	755	1490	705	635
.30	75	1890	890	930	1660	785	745	1465	690	630
.40	100	1820	860	900	1605	760	725	1415	670	615
.50	125	1745	825	875	1545	730	705	1365	645	600
.60	150	1665	785	845	1485	700	680	1305	615	580
.70	175	1580	745	820	1415	665	660	1245	585	555
.75	185	1535	725	805	1375	650	650	1210	570	540

NOTE — All air data is measured external to unit with air filter in place. Electric heaters have no appreciable air resistance.

## BLOWER DATA

### CB28UH-060 BLOWER PERFORMANCE (208/230V)

External Static Pressure		Air Volume and Motor Watts at Specific Blower Taps														
in. w.g.	Pa	High			Medium-High			Medium			Medium-Low			Low		
		cfm	L/s	Watts	cfm	L/s	Watts	cfm	L/s	Watts	cfm	L/s	Watts	cfm	L/s	Watts
.00	0	2245	1060	1080	2130	1005	930	2000	945	820	1800	850	695	1565	740	570
.05	10	2220	1045	1070	2105	995	920	1980	935	815	1780	840	690	1550	730	570
.10	25	2190	1035	1060	2080	985	915	1955	925	805	1760	830	680	1535	725	565
.15	35	2165	1020	1050	2055	970	905	1935	910	795	1735	820	670	1520	715	560
.20	50	2135	1005	1040	2030	960	895	1910	900	785	1715	810	665	1500	710	555
.25	60	2105	995	1030	2000	945	885	1880	890	780	1690	795	655	1480	700	550
.30	75	2070	980	1020	1970	930	875	1855	875	770	1665	785	645	1460	690	540
.40	100	2005	945	995	1910	900	855	1795	850	750	1610	760	630	1415	670	530
.50	125	1935	910	975	1845	870	830	1735	820	730	1555	735	610	1365	645	515
.60	150	1855	875	950	1775	835	810	1665	785	710	1495	705	595	1310	615	500
.70	175	1775	840	925	1695	800	785	1595	755	690	1430	675	580	1245	590	485
.80	200	1690	800	900	1615	765	755	1520	715	665	1365	645	560	1180	555	470
.90	225	1600	755	875	1530	725	730	1440	680	645	1290	610	545	1105	520	455
.95	235	1555	735	865	1490	700	715	1395	660	635	1255	590	535	1070	505	450

NOTE — All air data is measured external to unit with air filter in place. Electric heaters have no appreciable air resistance.

## CB28UH-018/024 AND CB28UH-030 - ELECTRIC HEAT DATA

### SINGLE PHASE ELECTRIC HEAT

Model Number	No. Steps	Volt	Input		Blower Motor Full Load Amps	CB28UH-018/024		CB28UH-030					
			kW	<sup>1</sup> Btuh		<sup>2</sup> Minimum Circuit Ampacity	<sup>3</sup> Maximum Overcurrent Protection	Blower Motor Full Load Amps	<sup>2</sup> Minimum Circuit Ampacity		<sup>3</sup> Maximum Overcurrent Protection		
										Circuit 1	Circuit 2	Circuit 1	Circuit 2
<b>2.5 kW</b> 4 lbs.	ECB29-2.5 ( <b>28K30</b> ) Terminal block	1	208	1.9	6,400	1.5	13	15	Not Available				
			220	2.1	7,200	1.5	15	15					
			230	2.3	7,800	1.5	15	15					
			240	2.5	8,500	1.5	15	15					
<b>5 kW</b> 4 lbs.	ECB29-5 ( <b>28K31</b> ) Terminal Block ECB29-5CB ( <b>28K32</b> ) 30A Circuit breaker	1	208	3.8	12,800	1.5	24	<b>4 25</b>	2.4	26	---	30	---
			220	4.2	14,300	1.5	28	30	2.4	29	---	30	---
			230	4.6	15,700	1.5	28	30	2.4	29	---	30	---
			240	5.0	17,100	1.5	28	30	2.4	29	---	30	---
<b>6 kW</b> 4 lbs.	ECB29-6 ( <b>47L22</b> ) Terminal block ECB29-6CB ( <b>47L23</b> ) 35A Circuit breaker	1	208	4.5	15,400	1.5	29	<b>4 30</b>	2.4	30	---	<b>4 30</b>	---
			220	5.0	17,100	1.5	33	35	2.4	34	---	35	---
			230	5.5	18,800	1.5	33	35	2.4	34	---	35	---
			240	6.0	20,500	1.5	33	35	2.4	34	---	35	---
<b>8 kW</b> 5 lbs.	ECB29-8 ( <b>28K33</b> ) Terminal block ECB29-8CB ( <b>28K34</b> ) 45A Circuit breaker	2	208	6.0	20,500	1.5	40	<b>4 40</b>	2.4	40	---	<b>4 40</b>	---
			220	6.7	22,900	1.5	44	45	2.4	45	---	45	---
			230	7.3	25,100	1.5	44	45	2.4	45	---	45	---
			240	8.0	27,300	1.5	44	45	2.4	45	---	45	---
<b>9 kW</b> 5 lbs.	ECB29-9CB ( <b>10L11</b> ) 50A Circuit breaker	2	208	6.8	23,100	1.5	42	<b>4 45</b>	2.4	44	---	<b>4 45</b>	---
			220	7.6	25,800	1.5	49	50	2.4	50	---	50	---
			230	8.3	28,200	1.5	49	50	2.4	50	---	50	---
			240	9.0	30,700	1.5	49	50	2.4	50	---	50	---
<b>10 kW</b> 6 lbs.	ECB29-10 ( <b>28K35</b> ) Terminal block ECB29-10CB ( <b>28K36</b> ) 60A Circuit breaker	2	208	7.5	25,600	1.5	47	<b>4 50</b>	2.4	48	---	<b>4 50</b>	---
			220	8.4	28,700	1.5	54	60	2.4	55	---	60	---
			230	9.2	31,400	1.5	54	60	2.4	55	---	60	---
			240	10.0	34,100	1.5	54	60	2.4	55	---	60	---
<b>12.5 kW</b> 10 lbs.	ECB29-12.5CB ( <b>28K37</b> ) (1) 25A & (1) 50A Circuit breaker	3	208	9.4	32,000	Not Available			2.4	22	31	25	<b>4 45</b>
			220	10.5	35,800				2.4	25	35	25	50
			230	11.5	39,200				2.4	25	35	25	50
			240	12.5	42,600				2.4	25	35	25	50
<b>15 kW</b> 12 lbs.	ECB29-15CB ( <b>28K38</b> ) (1) 30A & (1) 60A Circuit breaker	3	208	11.3	38,400	Not Available			2.4	26	37	30	<b>4 50</b>
			220	12.6	43,000				2.4	29	42	30	60
			230	13.5	47,000				2.4	29	42	30	60
			240	15.0	51,200				2.4	29	42	30	60

NOTE - Circuit 1 Minimum Circuit Ampacity includes the Blower Motor Full Load Amps.

<sup>1</sup> Electric heater capacity only — does not include additional blower motor heat capacity.

<sup>2</sup> Refer to National or Canadian Electrical Code manual to determine wire, fuse and disconnect size requirements. Use wires suitable for at least 167°F (75°C).

<sup>3</sup> HACR type breaker or fuse.

<sup>4</sup> Bold text indicates that the circuit breaker on "CB" circuit breaker models must be replaced (field provided) with size noted.

**CB28UH-036 AND CB28UH-042 - ELECTRIC HEAT DATA**

**SINGLE PHASE ELECTRIC HEAT**

						CB28UH-036				CB28UH-042					
		No. Steps	Input			Blower Motor Full Load Amps	<sup>2</sup> Minimum Circuit Ampacity		<sup>3</sup> Maximum Overcurrent Protection		Blower Motor Full Load Amps	<sup>2</sup> Minimum Circuit Ampacity		<sup>3</sup> Maximum Overcurrent Protection	
Model Number	Volts		kW	1 Btuh	Circuit 1		Circuit 2	Circuit 1	Circuit 2	Circuit 1		Circuit 2	Circuit 1	Circuit 2	
5 kW 4 lbs.	ECB29-5 (28K31) Terminal block	1	208	3.8	12,800	2.4	26	---	30	---	4.4	29	---	30	---
	ECB29-5CB (28K32) 30A Circuit breaker		220	4.2	14,300	2.4	29	---	30	---	4.4	32	---	35	---
			230	4.6	15,700	2.4	29	---	30	---	4.4	32	---	35	---
			240	5.0	17,100	2.4	29	---	30	---	4.4	32	---	35	---
6 kW 4 lbs.	ECB29-6 (47L22) Terminal block	1	208	4.5	15,400	2.4	30	---	<b>4 30</b>	---	4.4	33	---	35	---
	ECB29-6CB (47L23) 35A Circuit breaker		220	5.0	17,100	2.4	34	---	35	---	4.4	37	---	40	---
			230	5.5	18,800	2.4	34	---	35	---	4.4	37	---	40	---
			240	6.0	20,500	2.4	34	---	35	---	4.4	37	---	40	---
8 kW 5 lbs.	ECB29-8 (28K33) Terminal block	2	208	6.0	20,500	2.4	40	---	<b>4 40</b>	---	4.4	42	---	45	---
	ECB29-8CB (28K34) 45A Circuit breaker		220	6.7	22,900	2.4	45	---	45	---	4.4	47	---	50	---
			230	7.3	25,100	2.4	45	---	45	---	4.4	47	---	50	---
			240	8.0	27,300	2.4	45	---	45	---	4.4	47	---	50	---
9 kW 5 lbs.	ECB29-9CB (10L11) 50A Circuit breaker	2	208	6.8	23,100	2.4	44	---	<b>4 45</b>	---	4.4	47	---	50	---
			220	7.6	25,800	2.4	50	---	50	---	4.4	53	---	60	---
			230	8.3	28,200	2.4	50	---	50	---	4.4	53	---	60	---
			240	9.0	30,700	2.4	50	---	50	---	4.4	53	---	60	---
10 kW 6 lbs.	ECB29-10 (28K35) Terminal block	2	208	7.5	25,600	2.4	48	---	<b>4 50</b>	---	4.4	55	---	60	---
	ECB29-10CB (28K36) 60A Circuit breaker		220	8.4	28,700	2.4	55	---	60	---	4.4	58	---	60	---
			230	9.2	31,400	2.4	55	---	60	---	4.4	58	---	60	---
			240	10.0	34,100	2.4	55	---	60	---	4.4	58	---	60	---
12.5 kW 10 lbs.	ECB29-12.5CB (28K37) (1) 25A & (1) 50A Circuit breaker	3	208	9.4	32,000	2.4	22	31	25	<b>4 45</b>	4.4	25	31	25	<b>4 45</b>
			220	10.5	35,800	2.4	25	35	25	50	4.4	28	35	30	50
			230	11.5	39,200	2.4	25	35	25	50	4.4	28	35	30	50
			240	12.5	42,600	2.4	25	35	25	50	4.4	28	35	30	50
15 kW 12 lbs.	ECB29-15CB (28K38) (1) 30A & (1) 60A Circuit breaker	3	208	11.3	38,400	2.4	26	37	30	<b>4 50</b>	4.4	29	37	30	<b>4 50</b>
			220	12.6	43,000	2.4	29	42	30	60	4.4	32	42	35	60
			230	13.5	47,000	2.4	29	42	30	60	4.4	32	42	35	60
			240	15.0	51,200	2.4	29	42	30	60	4.4	32	42	35	60
20 kW 19 lbs.	ECB29-20CB (11L31) (1) 50A & (1) 60A Circuit breaker	4	208	15.0	51,200	2.4	45	41	<b>4 45</b>	60	4.4	47	41	50	60
			220	16.8	57,300	2.4	50	46	50	60	4.4	52	46	60	60
			230	18.4	62,700	2.4	50	46	50	60	4.4	52	46	60	60
			240	20.0	68,200	2.4	50	46	50	60	4.4	52	46	60	60

**THREE PHASE ELECTRIC HEAT**

						CB28UH-036				CB28UH-042					
8 kW 5 lbs.	ECB29-8 (28K42) Terminal Block	3	208	6.0	20,500	2.4	24	---	25	---	4.4	27	---	30	---
			220	6.7	22,900	2.4	27	---	30	---	4.4	30	---	30	---
			230	7.3	25,100	2.4	27	---	30	---	4.4	30	---	30	---
			240	8.0	27,300	2.4	27	---	30	---	4.4	30	---	30	---
10 kW 6 lbs.	ECB29-10 (28K43) Terminal block	3	208	7.5	25,600	2.4	29	---	30	---	4.4	32	---	35	---
			220	8.4	28,700	2.4	33	---	35	---	4.4	36	---	40	---
			230	9.2	31,400	2.4	33	---	35	---	4.4	36	---	40	---
			240	10.0	34,100	2.4	33	---	35	---	4.4	36	---	40	---
15 kW 12 lbs.	ECB29-15CB (28K44) (1) 50A Circuit breaker	3	208	11.3	38,400	2.4	42	---	<b>4 45</b>	---	3.6	45	---	<b>3 45</b>	---
			220	12.6	43,000	2.4	48	---	50	---	3.6	51	---	60	---
			230	13.5	47,000	2.4	48	---	50	---	3.6	51	---	60	---
			240	15.0	51,200	2.4	48	---	50	---	3.6	51	---	60	---
20 kW 19 lbs.	ECB29-20CB (28K45) (2) 35A Circuit breaker	6	208	15.0	51,200	3.8	29	21	30	<b>4 30</b>	Not Available				
			220	16.8	57,300	3.8	33	24	35	35					
			230	18.4	62,700	3.8	33	24	35	35					
			240	20.0	68,200	3.8	33	24	35	35					

NOTE - Circuit 1 Minimum Circuit Ampacity includes the Blower Motor Full Load Amps.

<sup>1</sup> Electric heater capacity only — does not include additional blower motor heat capacity.

<sup>2</sup> Refer to National or Canadian Electrical Code manual to determine wire, fuse and disconnect size requirements. Use wires suitable for at least 167°F (75°C).

<sup>3</sup> HACR type breaker or fuse.

<sup>4</sup> Bold text indicates that the circuit breaker on "CB" circuit breaker models must be replaced (field provided) with size noted.

**CB28UH-048 AND CB28UH-060 - ELECTRIC HEAT DATA**

SINGLE PHASE ELECTRIC HEAT				CB28UH-048						CB28UH-060									
Model Number	No. of Steps	Input		Blower Motor Full Load Amps	2 Minimum Circuit Ampacity			3 Maximum Overcurrent Protection			Blower Motor Full Load Amps	2 Minimum Circuit Ampacity			3 Maximum Overcurrent Protection				
		Volts	kW		Btuh	Circuit 1	Circuit 2	Circuit 3	Circuit 1	Circuit 2		Circuit 3	Circuit 1	Circuit 2	Circuit 3	Circuit 1	Circuit 2	Circuit 3	
5 kW 4 lbs.	ECB29-5 (28K31) Terminal Block ECB29-5CB (28K32) 30A Circuit breaker	1	208	3.8	12,800	4.5	29	---	---	30	---	---	4.6	29	---	---	30	---	---
			220	4.2	14,300	4.5	32	---	---	35	---	---	4.6	32	---	---	35	---	---
			230	4.6	15,700	4.5	32	---	---	35	---	---	4.6	32	---	---	35	---	---
			240	5.0	17,100	4.5	32	---	---	35	---	---	4.6	32	---	---	35	---	---
6 kW 4 lbs.	ECB29-6 (47L22) Terminal Block ECB29-6CB (47L23) 35A Circuit breaker	1	208	4.5	15,400	4.5	33	---	---	35	---	---	4.6	33	---	---	35	---	---
			220	5.0	17,100	4.5	37	---	---	40	---	---	4.6	37	---	---	40	---	---
			230	5.5	18,800	4.5	37	---	---	40	---	---	4.6	37	---	---	40	---	---
			240	6.0	20,500	4.5	37	---	---	40	---	---	4.5	37	---	---	40	---	---
8 kW 5 lbs.	ECB29-8 (28K33) Terminal Block ECB29-8CB (28K34) 45A Circuit breaker	2	208	6.0	20,500	4.5	42	---	---	45	---	---	4.6	42	---	---	45	---	---
			220	6.7	22,900	4.5	48	---	---	50	---	---	4.6	48	---	---	50	---	---
			230	7.3	25,100	4.5	48	---	---	50	---	---	4.6	48	---	---	50	---	---
			240	8.0	27,300	4.5	48	---	---	50	---	---	4.6	48	---	---	50	---	---
9 kW 5 lbs.	ECB29-9CB (10L11) 50A Circuit breaker	2	208	6.8	23,100	4.5	47	---	---	50	---	---	4.6	47	---	---	50	---	---
			220	7.6	25,800	4.5	53	---	---	60	---	---	4.6	53	---	---	60	---	---
			230	8.3	28,200	4.5	53	---	---	60	---	---	4.6	53	---	---	60	---	---
			240	9.0	30,700	4.5	53	---	---	60	---	---	4.6	53	---	---	60	---	---
10 kW 6 lbs.	ECB29-10 (28K35) Terminal Block ECB29-10CB (28K36) 60A Circuit breaker	2	208	7.5	25,600	4.5	51	---	---	60	---	---	4.6	51	---	---	60	---	---
			220	8.4	28,700	4.5	58	---	---	60	---	---	4.6	58	---	---	60	---	---
			230	9.2	31,400	4.5	58	---	---	60	---	---	4.6	58	---	---	60	---	---
			240	10.0	34,100	4.5	58	---	---	60	---	---	4.6	58	---	---	60	---	---
12.5 kW 10 lbs.	ECB29-12.5CB (28K37) (1)25A &(1) 50A Circuit Breaker	3	208	9.4	32,000	4.5	25	31	---	25	<sup>4</sup> 45	---	4.6	25	31	---	25	<sup>4</sup> 45	---
			220	10.5	35,800	4.5	27	35	---	30	50	---	4.6	28	35	---	30	50	---
			230	11.5	39,200	4.5	27	35	---	30	50	---	4.6	28	35	---	30	50	---
			240	12.5	42,600	4.5	27	35	---	30	50	---	4.6	28	35	---	30	50	---
15 kW 12 lbs.	ECB29-15CB (28K38) (1)30A & (1)60A Circuit breaker	3	208	11.3	38,400	4.5	29	37	---	30	<sup>4</sup> 50	---	4.6	29	37	---	30	<sup>4</sup> 50	---
			220	12.6	43,000	4.5	32	42	---	35	60	---	4.6	32	42	---	35	60	---
			230	13.5	47,000	4.5	32	42	---	35	60	---	4.6	32	42	---	35	60	---
			240	15.0	51,200	4.5	32	42	---	35	60	---	4.6	32	42	---	35	60	---
20 kW 19 lbs.	ECB29-20CB (11L31) (1)50A & (1)60A Circuit breaker	4	208	15.0	51,200	4.5	47	41	---	50	60	---	4.6	47	41	---	50	60	---
			220	16.8	57,300	4.5	53	46	---	60	60	---	4.6	53	46	---	60	60	---
			230	18.4	62,700	4.5	53	46	---	60	60	---	4.6	53	46	---	60	60	---
			240	20.0	68,200	4.5	53	46	---	60	60	---	4.6	53	46	---	60	60	---
25 kW 19 lbs.	ECB29-25CB (28K40) (3) 50A Circuit breaker	6	208	18.8	64,100	4.5	44	31	31	<sup>4</sup> 45	<sup>4</sup> 45	<sup>4</sup> 45	4.6	44	31	31	<sup>4</sup> 45	<sup>4</sup> 45	<sup>4</sup> 45
			220	21.0	71,700	4.5	49	35	35	50	50	50	4.6	50	35	35	50	50	50
			230	23.0	78,300	4.5	49	35	35	50	50	50	4.6	50	35	35	50	50	50
			240	25.0	85,300	4.5	49	35	35	50	50	50	4.6	50	35	35	50	50	50
30 kW 19 lbs.	ECB29-30CB (28K41) (3) 60A Circuit breaker	6	208	22.5	76,900	Not Available						4.6	51	37	37	60	<sup>4</sup> 50	<sup>4</sup> 50	
			220	25.2	86,000	Not Available						4.6	58	42	42	60	60	60	
			230	27.5	94,000	Not Available						4.6	58	42	42	60	60	60	
			240	30.0	102,400	Not Available						4.6	58	42	42	60	60	60	
THREE PHASE ELECTRIC HEAT				CB28UH-048						CB28UH-060									
8 kW 5 lbs.	ECB29-8 (28K42) Terminal Block	3 steps	208	6.0	20,500	4.5	27	---	---	30	---	---	4.6	27	---	---	30	---	---
			220	6.7	22,900	4.5	30	---	---	30	---	---	4.6	30	---	---	30	---	---
			230	7.3	25,100	4.5	30	---	---	30	---	---	4.6	30	---	---	30	---	---
			240	8.0	27,300	4.5	30	---	---	30	---	---	4.6	30	---	---	30	---	---
10 kW 6 lbs.	ECB29-10 (28K43) Terminal Block	3 steps	208	7.5	25,600	4.5	32	---	---	35	---	---	4.6	32	---	---	35	---	---
			220	8.4	28,700	4.5	36	---	---	40	---	---	4.6	36	---	---	40	---	---
			230	9.2	31,400	4.5	36	---	---	40	---	---	4.6	36	---	---	40	---	---
			240	10.0	34,100	4.5	36	---	---	40	---	---	4.6	36	---	---	40	---	---
15 kW 12 lbs.	ECB29-15CB (28K44) (1) 50A Circuit breaker	3 steps	208	11.3	38,400	4.5	45	---	---	<sup>4</sup> 45	---	---	4.6	45	---	---	<sup>4</sup> 45	---	---
			220	12.6	43,000	4.5	51	---	---	60	---	---	4.6	51	---	---	60	---	---
			230	13.5	47,000	4.5	51	---	---	60	---	---	4.6	51	---	---	60	---	---
			240	15.0	51,200	4.5	51	---	---	60	---	---	4.6	51	---	---	60	---	---
20 kW 19 lbs.	ECB29-20CB (28K45) (2) 35A Circuit breaker	6 steps	208	15.0	51,200	4.5	32	21	---	35	<sup>4</sup> 30	---	4.6	32	21	---	35	<sup>4</sup> 30	---
			220	16.8	57,300	4.5	36	24	---	40	35	---	4.6	36	24	---	40	35	---
			230	18.4	62,700	4.5	36	24	---	40	35	---	4.6	36	24	---	40	35	---
			240	20.0	68,200	4.5	36	24	---	40	35	---	4.6	36	24	---	40	35	---
25 kW 19 lbs.	ECB29-25CB (28K46) (2) 45A Circuit Breaker	6 steps	208	18.8	64,100	4.5	39	27	---	<sup>4</sup> 40	40	---	4.6	39	27	---	<sup>4</sup> 40	40	---
			220	21.0	71,700	4.5	43	30	---	45	45	---	4.6	43	30	---	45	45	---
			230	23.0	78,300	4.5	43	30	---	45	45	---	4.6	43	30	---	45	45	---
			240	25.0	85,300	4.5	43	30	---	45	45	---	4.6	43	30	---	45	45	---

NOTE - Circuit 1 Minimum Circuit Ampacity includes the Blower Motor Full Load Amps.

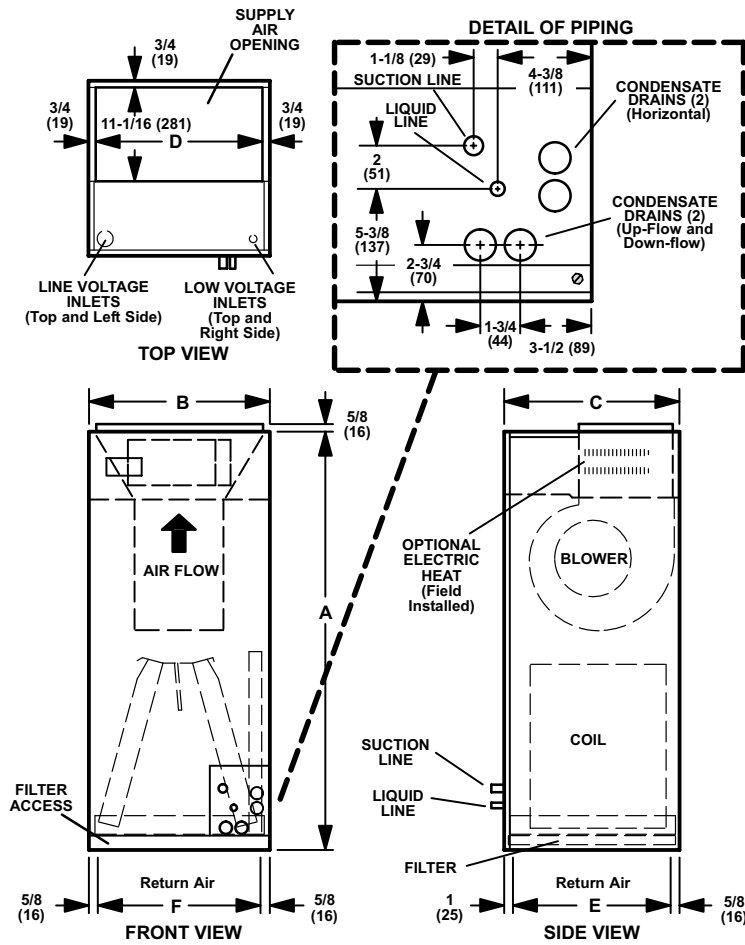
<sup>1</sup> Electric heater capacity only — does not include additional blower motor heat capacity.

<sup>2</sup> Refer to National or Canadian Electrical Code manual to determine wire, fuse and disconnect size requirements. Use wires suitable for at least 167°F (75°C).

<sup>3</sup> HACR type breaker or fuse.

<sup>4</sup> Bold text indicates that the circuit breaker on "CB" circuit breaker models must be replaced (field provided) with size noted.

**CB28UH UP-FLOW POSITION**

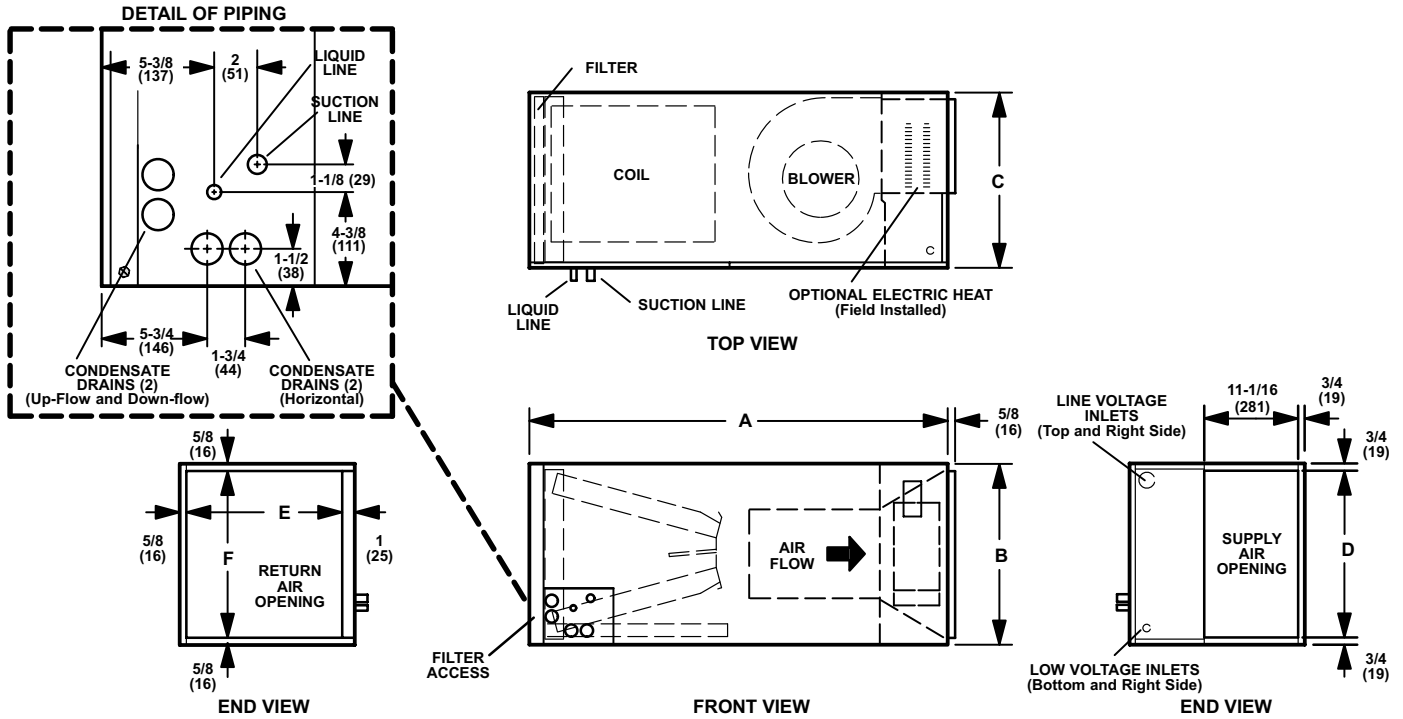


Model No.	CB28UH-018/024 CB28UH-030		CB28UH-036 CB28UH-042		CB28UH-048 CB28UH-060	
	inch	mm	inch	mm	inch	mm
A	45-1/4	1149	49-1/4	1251	52-1/2	1334
B	16-1/4	413	21-1/4	540	21-1/4	540
C	20-5/8	524	20-5/8	524	22-5/8	575
D	14-3/4	375	19-3/4	502	19-3/4	502
E	19	483	19	483	21	533
F	15	381	20	508	20	508

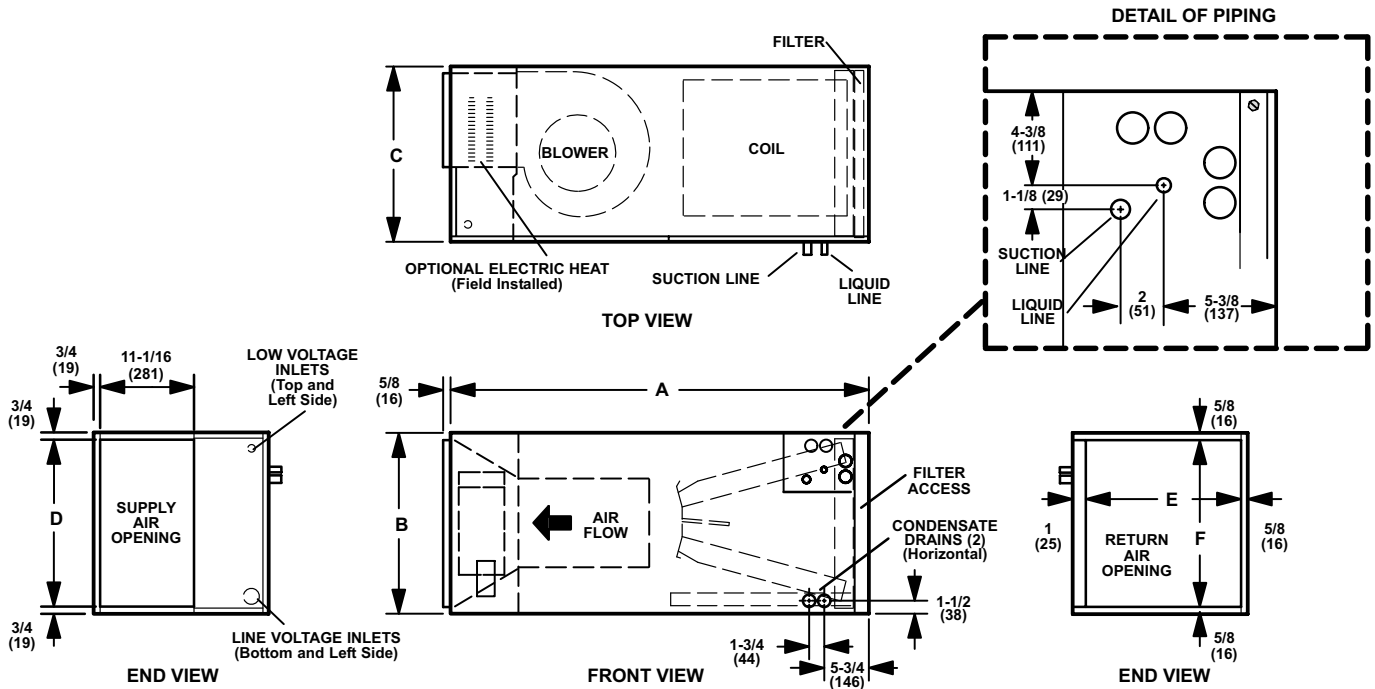


# DIMENSIONS - INCHES (MM)

## CB28UH HORIZONTAL POSITION (RIGHT-HAND AIR DISCHARGE)

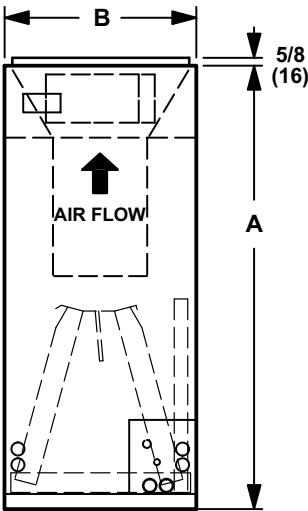
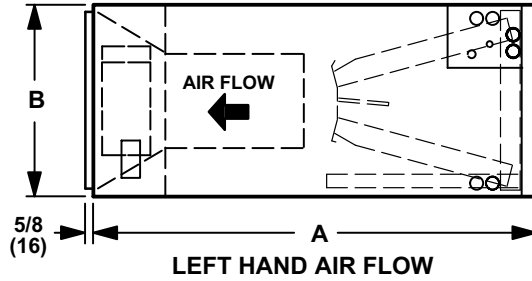
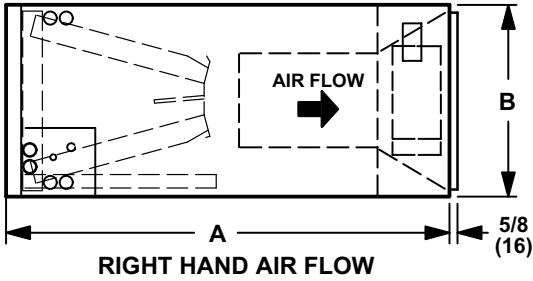
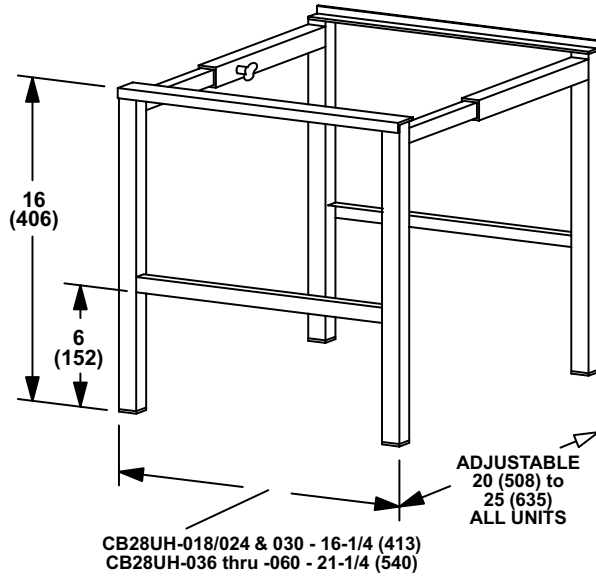


## CB28UH HORIZONTAL POSITION (LEFT-HAND AIR DISCHARGE)



Model No.	A		B		C		D		E		F	
	inch	mm	inch	mm	inch	mm	inch	mm	inch	mm	inch	mm
CB28UH-018/024 CB28UH-030	45-1/4	1149	16-1/4	413	20-5/8	524	14-3/4	375	19	483	15	381
CB28UH-036 CB28UH-042	49-1/4	1251	21-1/4	540	20-5/8	524	19-3/4	502	19	483	20	508
CB28UH-048 CB28UH-060	52-1/2	1334	21-1/4	540	22-5/8	575	19-3/4	502	21	533	20	508

**SIDE RETURN UNIT STAND  
(Up-Flow Only)**



Blower Coil Model No.	A		B	
	in.	mm	in.	mm
CB28UH-018/024 CB28UH-030	45-1/4	1149	16-1/4	413
CB28UH-036 CB28UH-042	49-1/4	1251	21-1/4	540
CB28UH-048 CB28UH-060	52-1/2	1334	21-1/4	540

**INSTALLATION CLEARANCES**

Cabinet	0 inch (0 mm)
Plenum and Outlet duct on blower/coil units	1 inch (25 mm)
Plenum and Warm air duct within 3 feet (914mm) of cabinet	1 inch (25 mm)
Floor	Combustible