

**LENNOX**  
Innovation never felt so good.®

*efficient* *comfort*

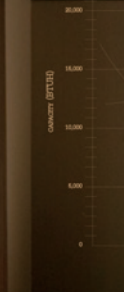
**ELITE**  
SERIES



**XP20**

High-efficiency  
heat pump  
with true  
variable capacity.

SYSTEM ANALYSIS 200 RECORDS  
AIR VOLUME: 1900cfm  
EXTERNAL STATIC PRESS: 0.7 INCHES WG  
BLOWER SPEED: MED LOW  
SYSTEM CURVE @ 0.7"



# An incredible balance of comfort, precision and efficiency.

The Elite® Series XP20 provides ideal home comfort and can help lower utility bills. That's because it is equipped with true variable capacity to balance comfort and energy use.

True variable capacity means the XP20 can constantly adjust its operating speed based on the temperatures of indoor and outdoor air. So it always runs just fast enough to maintain the temperature you set, without using more energy than necessary. That means you can enjoy lower utility bills every month and outstanding comfort every day.



## Another example of Lennox® innovation

The XP20 comes from a long line of Lennox advancements centered on providing you with reliable, durable products and exceptional comfort. Lab-tested to ensure it can perform in harsh conditions, the XP20 reflects our commitment to keeping you comfortable for years to come.

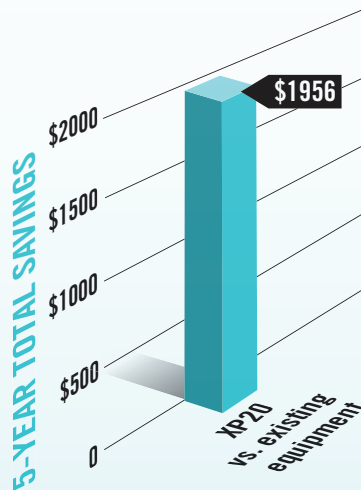
## Your investment is protected

The XP20 is covered by a 10-year limited warranty on the compressor and a 5-year limited warranty\* on all other covered components.



## Save energy and money

With **efficiency ratings up to 20 SEER\*\*** and **10.00 HSPF**, the XP20 can help **save you hundreds of dollars** each year on utility bills, compared to older or conventional single-stage units.



SEER stands for "Seasonal Energy Efficiency Ratio" and is a measure of the cooling efficiency of heat pumps. The higher the SEER, the greater your energy savings. Typical SEER ratings start at 13.00, but the XP20 carries ratings as high as 20.00. HSPF stands for "Heating Seasonal Performance Factor" and is a measure of the heating efficiency of heat pumps.

Savings charts show the 5-year savings you can expect from a 20.00 SEER/10.00 HSPF heat pump vs. existing equipment with a 10.00 SEER/6.80 HSPF rating. The regions used to calculate household fuel and utility costs reflect a cross-section of cities in the U.S. In addition to geography, cooling costs are based on 3-ton capacity specifications, with 800 cooling hours, 2,250 heating hours per year and 12.29 cents per kWh (Source: EIA National average electric rate—Rolling 12 months ending in December 2012). Your actual costs will vary depending on the weather, local fuel rates, systems settings and your personal lifestyle.

\*Covered components may be eligible to receive a 10-year limited warranty. Online equipment registration at [www.lennoxregistration.com](http://www.lennoxregistration.com) is required within 60 days of installation (except in California and Quebec) or Lennox' base warranty will apply. Applies to residential applications only. See actual warranty certificate for details.

\*\*Actual system efficiency may vary depending on the exact system match. Efficiencies are representative of a single AHRI Most Popular matched combination. Always verify actual system efficiencies through AHRI or by visiting AHRI ratings database at [www.ahridirectory.org](http://www.ahridirectory.org). Must be accompanied by either a Lennox variable speed air handler or furnace and an iComfort communicating thermostat.



*raising the standard on efficiency and*

*comfort*

### True precision and cost savings

Typically, a heat pump has a one- or two-stage compressor, the engine that's at the heart of the unit. The XP20 offers true variable capacity, meaning it can adjust heating and cooling output in many small increments to make you feel comfortable, while helping to minimize your energy costs.

### Quality air anywhere

An XP20 system paired with an iComfort® thermostat monitors humidity levels and removes excess moisture that can cause mold growth, creating healthier, more comfortable air.

### Enhanced comfort on extra-cold days



The XP20 can reach yet another level of comfort and energy-efficient performance when combined with a Lennox® gas furnace in one dual-fuel system. Your heat pump will provide cooling and warming on mild days, but on extremely cold days, the gas furnace takes over to maintain maximum comfort.



Choosing a product like the XP20 can improve your comfort, while also helping you save energy and money. For other ways to make your home more efficient, visit [ItPaysToLiveSmart.com](http://ItPaysToLiveSmart.com).

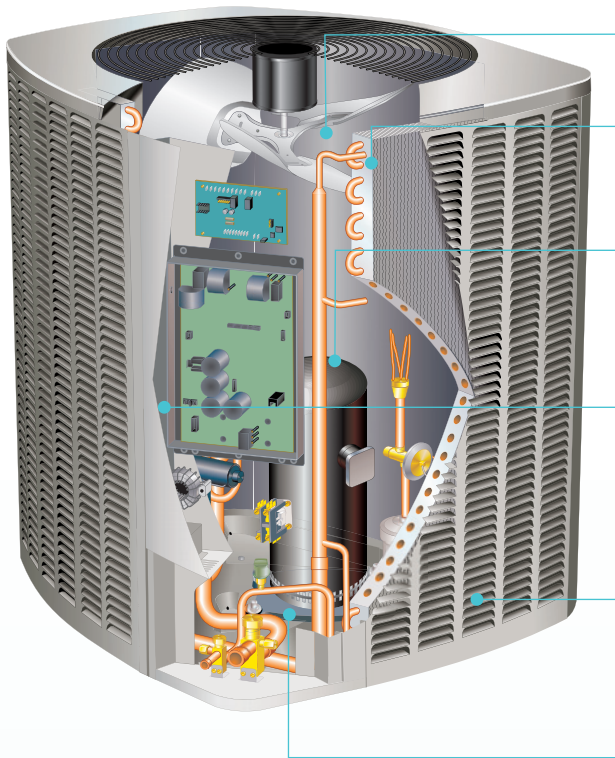


**Most Efficient  
2015**

[www.energystar.gov](http://www.energystar.gov)

The XP20 has earned the ENERGY STAR® Most Efficient 2015 label, which means it is recognized as one of the most efficient products that qualify for ENERGY STAR.

## Elite® Series XP20



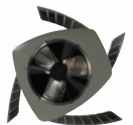
**Precision-Balanced Direct-Drive Fan** – Delivers quiet operation.

**High-Efficiency Outdoor Coil** – Provides exceptional heat transfer and low air resistance for high-efficiency operation.

**Variable-Capacity Scroll Compressor** – Can adjust cooling output to multiple levels based on demand, preserving quiet operation, energy efficiency and comfort.

**PermaGuard™ Cabinet** – Heavy-gauge, galvanized steel construction, louver coil guard, baked-on powder finish and durable zinc-coated steel base help provide protection against rust and corrosion.

**SmartHinge™ Louver Design** – Allows quick, easy access to interior components from all sides, so the unit can be serviced quickly.



**Drainage Holes** – Help prevent damaging moisture from collecting inside the basepan.

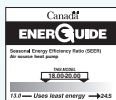
## Elite® Series XP20 Specifications

Model	024	036	048	060
SEER	Up to 20.00	Up to 20.00	Up to 19.50	Up to 19.00
HSPF	Up to 10.00	Up to 10.00	Up to 9.60	Up to 9.60
Sound Rating-dB as low as	65	67	68	69
Dimensions HxWxD (in)	39 x 35-1/2 x 39-1/2	39 x 35-1/2 x 39-1/2	45 x 35-1/2 x 39-1/2	45 x 35-1/2 x 39-1/2
HxWxD (mm)	991 x 902 x 1000	991 x 902 x 1000	1143 x 902 x 1000	1143 x 902 x 1000

**Note:** Due to Lennox' ongoing commitment to quality, all specifications, ratings and dimensions are subject to change without notice.



Proper sizing and installation of equipment is critical to achieve optimal performance. Split system air conditioners and heat pumps must be matched with appropriate coil components to meet ENERGY STAR® criteria. Ask your Lennox Dealer for details, or visit [www.energystar.gov](http://www.energystar.gov).



For a complete list of the registered and common law trademarks owned by Lennox Industries Inc., please visit [www.lennox.com](http://www.lennox.com).