



## AIR CONDITIONERS

### Features

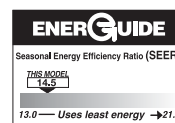
- Outdoor air conditioner designed for ground level or rooftop installations. These units offer comfort and dependability for single, multi-family and light commercial applications.
- Painted louvered steel cabinet
- Easily accessible control box
- Condenser coils constructed with copper tubing and enhanced aluminum fins
- Grille/Motor mount for quiet fan operation
- Filter Drier (shipped – not installed)



### WA14\*\*A SERIES

14 SEER/11.5 EER

Nominal Sizes 2-4 Tons [7.03-14.0 kW]



*“Proper sizing and installation of equipment is critical to achieve optimal performance. Split system air conditioners and heat pumps must be matched with appropriate coil components to meet ENERGY STAR criteria. Ask your Contractor for details or visit [www.energystar.gov](http://www.energystar.gov).”*

## TABLE OF CONTENTS

Model Number Identification .....	3-4
Electrical & Physical Data .....	5
Unit Dimensions .....	6
Refrigerant Line Size Information.....	7
Performance Data.....	8-9
Limited Warranty .....	10

## Air Conditioners\*

<u>W</u>	<u>A</u>	<u>13</u>	<u>24</u>	<u>A</u>	<u>J</u>	<u>1</u>	<u>N</u>	<u>A</u>	<u>*</u>
Brand	Product Category	SEER	Capacity BTU/HR	Major Series*	Voltage	Type	Controls	Minor Series**	Option Code
WeatherKing A - Air Conditioners		13 - 13 SEER 14 - 14 SEER	18 - 18,000 [5.28 kW] 24 - 24,000 [7.03 kW] 30 - 30,000 [8.79 kW] 36 - 36,000 [10.55 kW] 42 - 42,000 [12.31 kW] 48 - 48,000 [14.07 kW]	A - 1st Design	J - 1ph, 208-230/60 C - 3ph, 208-230/60 D - 3ph, 460/60	1 - Single-stage	N - Non-Communicating	A - 1st Design	N/A

## Heat Pumps (For Reference)\*\*

<u>W</u>	<u>P</u>	<u>14</u>	<u>24</u>	<u>A</u>	<u>J</u>	<u>1</u>	<u>N</u>	<u>A</u>	<u>*</u>
Brand	Product Category	SEER	Capacity BTU/HR	Major Series*	Voltage	Type	Controls	Minor Series**	Option Code
WeatherKing	P - Heat Pump	14 - 14 SEER	18 - 18,000 [5.28 kW] 24 - 24,000 [7.03 kW] 30 - 30,000 [8.79 kW] 36 - 36,000 [10.55 kW] 42 - 42,000 [12.31 kW] 48 - 48,000 [14.07 kW] 60 - 60,000 [17.58 kW]	A - 1st Design	J - 1ph, 208-230/60	1 - Single-stage	N - Non-Communicating	A - 1st Design	N/A

## Furnace Coils (For Reference)\*\*

<u>I</u>	<u>C</u>	<u>F</u>	<u>24</u>	<u>17</u>	<u>S</u>	<u>I</u>	<u>A</u>	<u>M</u>	<u>C</u>	<u>A</u>	<u>*</u>
Brand	Product Category	Type	Capacity BTU/HR	Width	Efficiency	Metering Device	Major Series*	Orientation	Casing	Minor Series**	Option Code
Generic	C - Evap Coil F - Furn Coil H - Air-Handler Coil		24 - 24,000 [7.03 kW] 36 - 36,000 [10.55 kW] 48 - 48,000 [14.07 kW] 60 - 60,000 [17.58 kW]	14 - 14" 17 - 17.5" 21 - 21" 24 - 24.5"	S - Standard Eff. M - Mid Eff. H - High Eff.	T-TXV E-EEV P-Piston	A - 1st Design	M - Multipoise V - Vertical only/ convertible H - Ded. Horizontal only	C - Cased U - Uncased	A - 1st Design	N/A

[ ] Designates Metric Conversions

**90%+ AFUE Gas Furnaces (For Reference)\*\***

<u>W</u>	<u>92</u>	<u>P</u>	<u>A</u>	<u>70</u>	<u>2</u>	<u>3</u>	<u>17</u>	<u>M</u>	<u>S</u>	<u>A</u>
Brand	Series	Motor	Major Rev	Input BTU/HR	Stages	Air Flow	Cabinet Width	Configuration	Nox	Minor Rev
WeatherKing	92 - 92 AFUE 95 - 95 AFUE 96 - 96 AFUE	P - PSC	A - 1st Design	040 - 42,000 [12.31 kW] 060 - 56,000 [16.41 kW] 070 - 70,000 [20.51 kW] 085 - 84,000 [24.62 kW] 100 - 98,000 [28.72 kW] 115 - 112,000 [32.82 kW]	1 - Single-stage	3 - up to 3 ton 5 - 3 1/2 up to 5 ton	14 - 14" 17 - 17.5" 21 - 21" 24 - 24.5"	M - Multi	X - Low Nox S - Standard	A - 1st Design

**80% AFUE Gas Furnaces (For Reference)\*\***

<u>W</u>	<u>80</u>	<u>2</u>	<u>V</u>	<u>A</u>	<u>075</u>	<u>3</u>	<u>17</u>	<u>M</u>	<u>S</u>	<u>A</u>
Brand	Series	Stages	Motor	Major Rev	Input BTU/HR	Air Flow	Cabinet Width	Configuration	Nox	Minor Rev
WeatherKing	80 - 80+ AFUE	1 - Single-stage	S - PSC standard	A - 1st Design	050 - 50,000 [15 kW] 075 - 75,000 [22 kW] 100 - 100,000 [29 kW] 125 - 125,000 [37 kW] 150 - 150,000 [44 kW]	3 - up to 3 ton 4 - 2 1/2 to 4 ton 5 - 3 1/2 up to 5 ton	14 - 14" 17 - 17.5" 21 - 21" 24 - 24.5"	M - Multi Z - Down & zero clearance down flow	X - Low Nox S - Standard	A - 1st Design

**Air Handlers (For Reference)\*\***

<u>W</u>	<u>H</u>	<u>1</u>	<u>I</u>	<u>36</u>	<u>17</u>	<u>S</u>	<u>I</u>	<u>A</u>	<u>N</u>	<u>A</u>	<u>000</u>	<u>*</u>	<u>-</u>
Brand	Product Category	Stages of Airflow	Motor Type	Capacity BTU/HR	Width	Coil Size	Metering Device	Major Series*	Controls	Voltage	Minor Series**	Factory Heat Option Code	
WeatherKing	H - Air Handler	1 - Single-Stage	P - PSC	24 - 24,000 [7.03 kW] 36 - 36,000 [10.55 kW] 48 - 48,000 [14.07 kW] 60 - 60,000 [17.58 kW]	14 - 14" 17 - 17.5" 21 - 21" 24 - 24.5"	S - Standard Eff. M - Mid Eff. H - High Eff.	T - TEV	A - 1st Design	N - Non-comm	A - 1ph, 115/60 J - 1ph, 208-240/60 D - 3ph, 480/60	A - 1st Design	00 - no factory heat with option code *TBD	

[ ] Designates Metric Conversions

## Electrical and Physical Data

Model Number WA 14**A	ELECTRICAL							PHYSICAL					
	Phase Frequency (Hz) Voltage (Volts)	Compressor		Fan Motor Full Load Amperes (FLA)	Minimum Circuit Capacity Amperes	Fuse or HACR Circuit Breaker		Outdoor Coil			Refrig. Per Circuit Oz. [g]	Weight	
		Rated Load Amperes (RLA)	Locked Rotor Amperes (LRA)			Minimum Amperes	Maximum Amperes	Face Area Sq. Ft. [m <sup>2</sup> ]	No. Rows	CFM [L/s]		Net Lbs. [kg]	Shipping Lbs. [kg]
24	1-60-208/230	13.5/13.5	58.3	0.6	18/18	25/25	30/30	16.39 [1.52]	1	2805 [1324]	93 [2636]	142 [64.4]	149 [67.5]
30	1-60-208/230	11.2/11.2	54	0.68	15/15	20/20	25/25	16.39 [1.52]	1	2915 [1376]	107 [3033]	168 [75.7]	175 [71.2]
36	1-60-208/230	14.1/14.1	78	1.0	19/19	25/25	30/30	21.85 [2.03]	1	3435 [1621]	124 [3515]	194 [87.9]	201 [82.1]
42	1-60-208/230	16.0/16.0	88	2.8	23/23	30/30	35/35	21.85 [2.03]	1	3550 [1675]	144 [4082]	218 [98.8]	225 [93]
48	1-60-208/230	21.8/21.8	117	1.7	29/29	35/35	50/50	21.85 [2.03]	2	4310 [2034]	236 [6690]	267 [121.0]	274 [124.2]

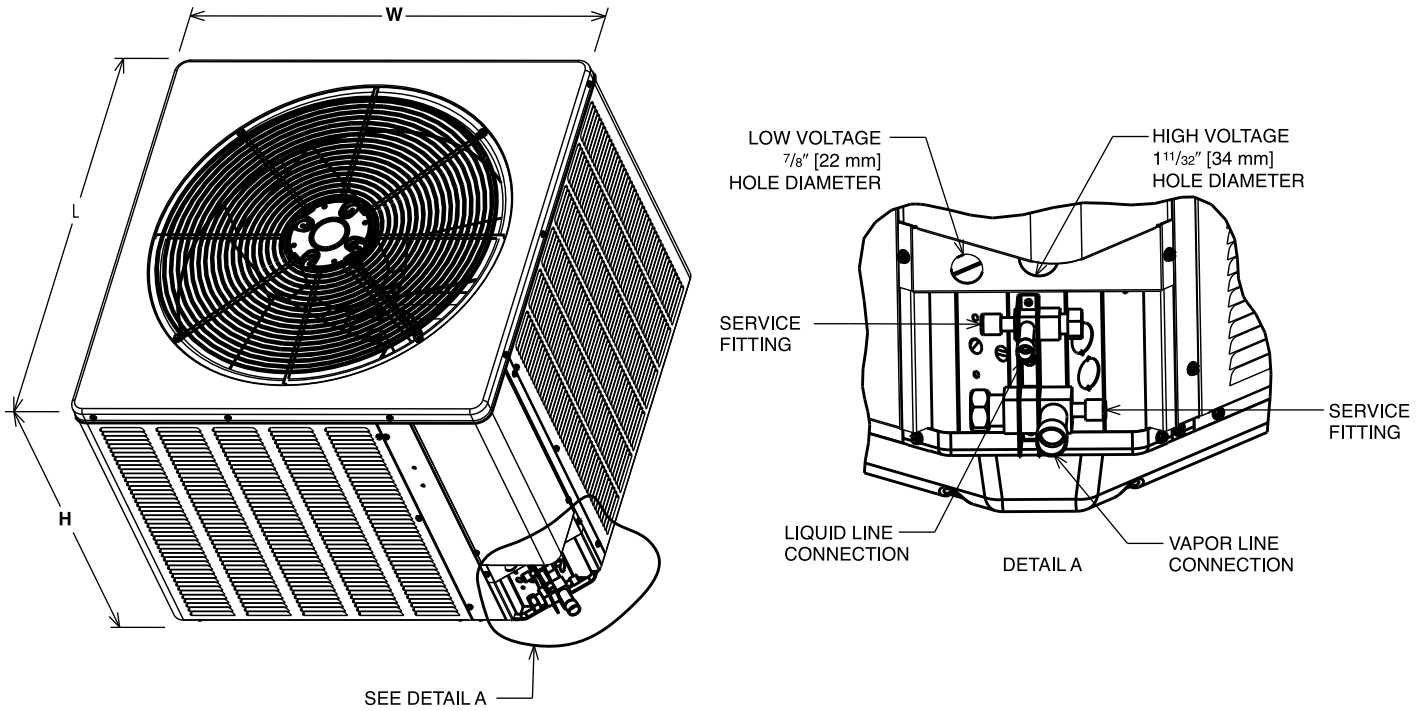
NOTE: Factory Refrigerant Charge includes refrigerant for 15 feet of standard line set.

[ ] Designates Metric Conversions

## Unit Dimensions

Model No. WA14**A	Unit Dimensions		
	Width "W" Inches [mm]	Length "L" Inches [mm]	Height "H" Inches [mm]
24	27 <sup>5</sup> / <sub>8</sub> [702]	27 <sup>5</sup> / <sub>8</sub> [702]	24 <sup>1</sup> / <sub>4</sub> [616]
30	31 <sup>5</sup> / <sub>8</sub> [803]	31 <sup>5</sup> / <sub>8</sub> [803]	27 <sup>3</sup> / <sub>8</sub> [695]
36, 42, 48	31 <sup>5</sup> / <sub>8</sub> [803]	31 <sup>5</sup> / <sub>8</sub> [803]	35 <sup>3</sup> / <sub>8</sub> [899]

[ ] Designates Metric Conversions



NOTE: Illustrations show the deep drawn basepan.

## Condensing Unit Refrigerant Line Size Information

Liquid Line Sizing (R-410A)														
System Capacity	Liquid Line Connection Size (Inch I.D.)	Line Size (Inch O.D.) [mm]	Liquid Line Size – Outdoor Unit Above Indoor Coil (Cooling Only—Does not apply to Heat Pumps)						Liquid Line Size – Outdoor Unit Below Indoor Coil					
			Total Equivalent Length—Feet [m]						Total Equivalent Length—Feet [m]					
			25 [7.62]	50 [15.24]	75 [22.86]	100 [30.48]	125 [38.10]	150 [45.72]	25 [7.62]	50 [15.24]	75 [22.86]	100 [30.48]	125 [38.10]	150 [45.72]
			Minimum Vertical Separation—Feet [m]						Maximum Vertical Separation—Feet [m]					
-24	3/8" [9.53]	1/4 [6.35]	0	10 [3.05]	36 [10.97]	61 [18.59]	87 [26.52]	112 [34.14]	16 [4.88]	N/A	N/A	N/A	N/A	N/A
		5/16 [7.93]	0	0	0	0	0	0	25 [7.62]	28 [8.53]	22 [6.71]	15 [4.57]	9 [2.74]	N/A
		3/8* [9.53]	0	0	0	0	0	0	25 [7.62]	37 [11.28]	34 [10.36]	32 [9.75]	30 [9.14]	28 [8.53]
-30	3/8" [9.53]	1/4 [6.35]	0	10 [3.05]	42 [12.80]	74 [22.56]	107 [32.61]	139 [42.37]	23 [7.01]	N/A	N/A	N/A	N/A	N/A
		5/16 [7.93]	0	0	0	0	0	0	25 [7.62]	39 [11.89]	31 [9.45]	22 [6.71]	14 [4.27]	N/A
		3/8* [9.53]	0	0	0	0	0	0	25 [7.62]	50 [15.24]	47 [14.33]	44 [13.41]	41 [12.50]	38 [11.58]
-36	3/8" [9.53]	5/16 [7.93]	0	0	0	0	6 [1.83]	18 [5.49]	25 [7.62]	30 [9.14]	18 [5.49]	N/A	N/A	N/A
		3/8* [9.53]	0	0	0	0	0	0	25 [7.62]	45 [13.72]	41 [12.50]	37 [11.28]	33 [10.06]	29 [8.84]
		1/2 [12.70]	0	0	0	0	0	0	25 [7.62]	50 [15.24]	51 [15.55]	50 [15.24]	49 [14.94]	48 [14.63]
-42	3/8" [9.53]	5/16 [7.93]	0	0	0	16 [4.88]	32 [9.75]	48 [14.63]	25 [7.62]	16 [4.88]	N/A	N/A	N/A	N/A
		3/8* [9.53]	0	0	0	0	0	0	25 [7.62]	37 [11.28]	31 [9.45]	26 [7.93]	20 [6.10]	15 [4.57]
		1/2 [12.70]	0	0	0	0	0	0	25 [7.62]	45 [13.72]	44 [13.41]	43 [13.11]	42 [12.80]	41 [12.50]
-48	3/8" [9.53]	5/16 [7.93]	0	0	7 [2.13]	27 [8.23]	48 [14.63]	69 [21.03]	25 [7.62]	14 [4.27]	N/A	N/A	N/A	N/A
		3/8* [9.53]	0	0	0	0	0	0	25 [7.62]	41 [12.50]	34 [10.36]	27 [8.23]	20 [6.10]	13 [3.96]
		1/2 [12.70]	0	0	0	0	0	0	25 [7.62]	50 [15.24]	51 [15.55]	49 [14.94]	48 [14.63]	46 [14.02]

NOTES: \*Standard line size  
N/A = Application not recommended.

Suction Line Length/Size versus Capacity Multiplier (R-410A)								
Unit Size		1 1/2 Ton	2 Ton	2 1/2 Ton	3 Ton	3 1/2 Ton	4 Ton	5 Ton
Suction Line Connection Size		3/4" [19.05] I.D.				7/8" [22.23] I.D.		
Suction Line Run—Feet [m]		5/8" [15.88 mm] O.D. Optional 3/4" [19.05 mm] O.D. Standard*		5/8" [15.88 mm] O.D. Optional 3/4" [19.05 mm] O.D. Standard* 7/8" [22.23 mm] O.D. Optional		3/4" [19.05 mm] O.D. Optional 7/8" [22.23 mm] O.D. Standard*		7/8" [22.23 mm] O.D. Optional 1 1/8" [28.58 mm] O.D. Standard*
25' [7.62]	Optional	1.00	1.00	1.00	1.00	1.00	1.00	1.00
	Standard	1.00	1.00	1.00	1.00	1.00	1.00	1.00
	Optional	—	—	1.00	—	—	—	—
50' [15.24]	Optional	.98	.98	.96	.98	.99	.99	.99
	Standard	.99	.99	.98	.99	.99	.99	.99
	Optional	—	—	.99	—	—	—	—
100' [30.48]	Optional	.95	.95	.94	.96	.96	.96	.97
	Standard	.96	.96	.96	.97	.98	.98	.98
	Optional	—	—	.97	—	—	—	—
150' [45.72]	Optional	.92	.92	.91	.94	.94	.95	.94
	Standard	.93	.94	.93	.95	.96	.96	.97
	Optional	—	—	.95	—	—	—	—

NOTES: \*Standard line size  
Using suction line larger than shown in chart will result in poor oil return and is not recommended.  
3 Ton Suction Line Connection is 3/4"

[ ] Designates Metric Conversions

## Performance Data @ AHRI Standard Conditions—Cooling

High Sales Volume Tested Combination (HSVTC)								
Outdoor Unit	Indoor Coil or Air Handler	Total Capacity BTU/H [kW]	Net Sensible BTU/H [kW]	Net Latent BTU/H [kW]	SEER	EER	Indoor CFM [L/s]	AHRI#
WA1424AJ1	TCFL-H*2417+RXMD-C04	24000 [7.0]	17700 [5.2]	6300 [1.8]	14	11.5	800 [377.6]	8937991
WA1430AJ1	TCF3617STA+RXMD-C04	29200 [8.6]	11200 [3.3]	18000 [5.3]	14	11.5	1000 [471.9]	8937993
WA1436AJ1	TCF3621STA+RXMD-C04	34600 [10.1]	23700 [6.9]	10900 [3.2]	14	11.5	1150 [542.7]	8937087
WA1442AJ1	TCFL-H*4821+RXMD-C04	40500 [11.9]	30200 [8.9]	10300 [3.0]	14	11.5	1400 [660.7]	8937997
WA1448AJ1	TCFL-H*4821+RXMD-C04	47000 [13.8]	34100 [10.0]	12900 [3.8]	14	11.5	1475 [696.1]	8938001

Coil Only Ratings								
Outdoor Unit	Indoor Coil	Total Capacity BTU/H [kW]	Net Sensible BTU/H [kW]	Net Latent BTU/H [kW]	SEER	EER	Indoor CFM [L/s]	AHRI#
WA1424AJ1	TCF2414STA+RXMD-C04	24000 [7.0]	17700 [5.2]	6300 [1.8]	14	11.5	800 [377.6]	8937051
	TCF2417STA+RXMD-C04	24000 [7.0]	17700 [5.2]	6300 [1.8]	14	11.5	800 [377.6]	8937052
WA1430AJ1	TCF3621HTA+RXMD-C04	30000 [8.8]	11500 [3.4]	18500 [5.4]	14	11.5	1000 [471.9]	8937065
	TCF3621MTA+RXMD-C04	30000 [8.8]	11500 [3.4]	18500 [5.4]	14	11.5	1000 [471.9]	8937066
	TCF3621STA+RXMD-C04	29200 [8.6]	10000 [2.9]	19200 [5.6]	14	11.5	1000 [471.9]	8937067
	TCF3624HTA+RXMD-C04	30000 [8.8]	11500 [3.4]	18500 [5.4]	14	11.5	1000 [471.9]	8937068
	TCF3624MTA+RXMD-C04	30000 [8.8]	11500 [3.4]	18500 [5.4]	14	11.5	1000 [471.9]	8937069
WA1436AJ1	TCF3621HTA+RXMD-C04	36000 [10.6]	26000 [7.6]	10000 [2.9]	14	11.5	1200 [566.3]	8937085
	TCF3621MTA+RXMD-C04	36000 [10.6]	26000 [7.6]	10000 [2.9]	14	11.5	1200 [566.3]	8937086
	TCF3617STA+RXMD-C04	34600 [10.1]	25000 [7.3]	9600 [2.8]	14	11.5	1150 [542.7]	8937995
	TCF3624HTA+RXMD-C04	36000 [10.6]	26000 [7.6]	10000 [2.9]	14	11.5	1200 [566.3]	8937088
	TCF3624MTA+RXMD-C04	36000 [10.6]	26000 [7.6]	10000 [2.9]	14	11.5	1200 [566.3]	8937089
WA1442AJ1	TCF4821MTA+RXMD-C04	42000 [12.3]	32000 [9.4]	10000 [2.9]	14	11.5	1400 [660.7]	8937106
	TCF4821STA+RXMD-C04	41000 [12.0]	30900 [9.1]	10100 [3.0]	14	11.5	1375 [648.9]	8937107
	TCF4824HTA+RXMD-C04	42000 [12.3]	31400 [9.2]	10600 [3.1]	14	11.5	1400 [660.7]	8937108
	TCF4824STA+RXMD-C04	41000 [12.0]	30900 [9.1]	10100 [3.0]	14	11.5	1375 [648.9]	8937109
WA1448AJ1	TCF4821MTA+RXMD-C04	48000 [14.1]	34800 [10.2]	13200 [3.9]	14	11.5	1550 [731.5]	8937121
	TCF4821STA+RXMD-C04	48000 [14.1]	35700 [10.5]	12300 [3.6]	14	11.5	1375 [648.9]	8937122
	TCF4824HTA+RXMD-C04	48000 [14.1]	34800 [10.2]	13200 [3.9]	14	11.5	1600 [755.1]	8937123
	TCF4824STA+RXMD-C04	48000 [14.1]	35700 [10.5]	12300 [3.6]	14	11.5	1375 [648.9]	8937124

[ ] Designates Metric Conversions



## Performance Data @ AHRI Standard Conditions—Cooling (con't.)

Air Handler Ratings								
Outdoor Unit	Indoor Coil	Total Capacity BTU/H [kW]	Net Sensible BTU/H [kW]	Net Latent BTU/H [kW]	SEER	EER	Indoor CFM [L/s]	AHRI#
WA1424AJ1	RF1P2421STAN	24000 [7.0]	17700 [5.2]	6300 [1.8]	14	11.5	800 [377.6]	8937053
	RF1T2421MTAN	24000 [7.0]	17700 [5.2]	6300 [1.8]	14	11.5	800 [377.6]	8937054
	WBHP-17	24000 [7.0]	17700 [5.2]	6300 [1.8]	14	11.5	800 [377.6]	8937050
	WH1P2417STAN	24000 [7.0]	17700 [5.2]	6300 [1.8]	14	11.5	800 [377.6]	8937055
	WH1T2417STAN	24000 [7.0]	17700 [5.2]	6300 [1.8]	14	11.5	800 [377.6]	8937056
WA1430AJ1	RF1T3624MTAN	30000 [8.8]	11500 [3.4]	18500 [5.4]	14	11.5	1025 [483.7]	8937070
	WBHP-21	30000 [8.8]	11500 [3.4]	18500 [5.4]	14	11.5	1000 [471.9]	8937064
	WH1T3617STAN	29800 [8.7]	11800 [3.5]	18000 [5.3]	14	11.5	1000 [471.9]	8937071
	WH1T3621HTAN	30000 [8.8]	11500 [3.4]	18500 [5.4]	14	11.5	1000 [471.9]	8937072
	WH1T3621MTAN	30000 [8.8]	11500 [3.4]	18500 [5.4]	14	11.5	975 [460.1]	8937073
WA1436AJ1	RF1P3624STAN	36000 [10.6]	26000 [7.6]	10000 [2.9]	14	11.5	1100 [519.1]	8937090
	RF1T3624MTAN	36000 [10.6]	26000 [7.6]	10000 [2.9]	14	11.5	1025 [483.7]	8937091
	WBHP-21	36000 [10.6]	23300 [6.8]	12700 [3.7]	14	11.5	1200 [566.3]	8937084
	WH1T3617STAN	35400 [10.4]	26000 [7.6]	9400 [2.8]	14	11.5	1200 [566.3]	8937092
	WH1T3621HTAN	36000 [10.6]	26000 [7.6]	10000 [2.9]	14	11.5	1200 [566.3]	8937093
	WH1T3621MTAN	36000 [10.6]	26000 [7.6]	10000 [2.9]	14	11.5	1150 [542.7]	8937094
WA1442AJ1	WBHP-24	41500 [12.2]	29600 [8.7]	11900 [3.5]	14	11.5	1400 [660.7]	8937105
	WH1P4221STAN	41000 [12.0]	30500 [8.9]	10500 [3.1]	14	11.5	1325 [625.3]	8937110
	WH1T4821MTAN	42000 [12.3]	31400 [9.2]	10600 [3.1]	14	11.5	1400 [660.7]	8937111
	WH1T4821STAN	42000 [12.3]	31900 [9.3]	10100 [3.0]	14	11.5	1400 [660.7]	8937112
WA1448AJ1	WBHP-24	47500 [13.9]	32200 [9.4]	15300 [4.5]	14	11.5	1400 [660.7]	8937120
	WH1T4821MTAN	48000 [14.1]	34800 [10.2]	13200 [3.9]	14	11.5	1400 [660.7]	8937125
	WH1T4821STAN	48000 [14.1]	34800 [10.2]	13200 [3.9]	14	11.5	1575 [743.3]	8937126
	WH1T4824STAN	48000 [14.1]	34800 [10.2]	13200 [3.9]	14	11.5	1550 [731.5]	8937127

[ ] Designates Metric Conversions

**GENERAL TERMS OF LIMITED WARRANTY\***

WeatherKing will furnish a replacement for any part of this product which fails in normal use and service within the applicable period stated, in accordance with the terms of the limited warranty.

**\*For complete details of the Limited and Conditional Warranties, including applicable terms and conditions, contact your local contractor or the Manufacturer for a copy of the product warranty certificate.**

Parts .....Five (5) Years



---

**Before proceeding with installation, refer to installation instructions packaged with each model, as well as complying with all Federal, State, Provincial, and Local codes, regulations, and practices.**



---

*"In keeping with its policy of continuous progress and product improvement, WeatherKing reserves the right to make changes without notice."*