



ENGINEERING DATA

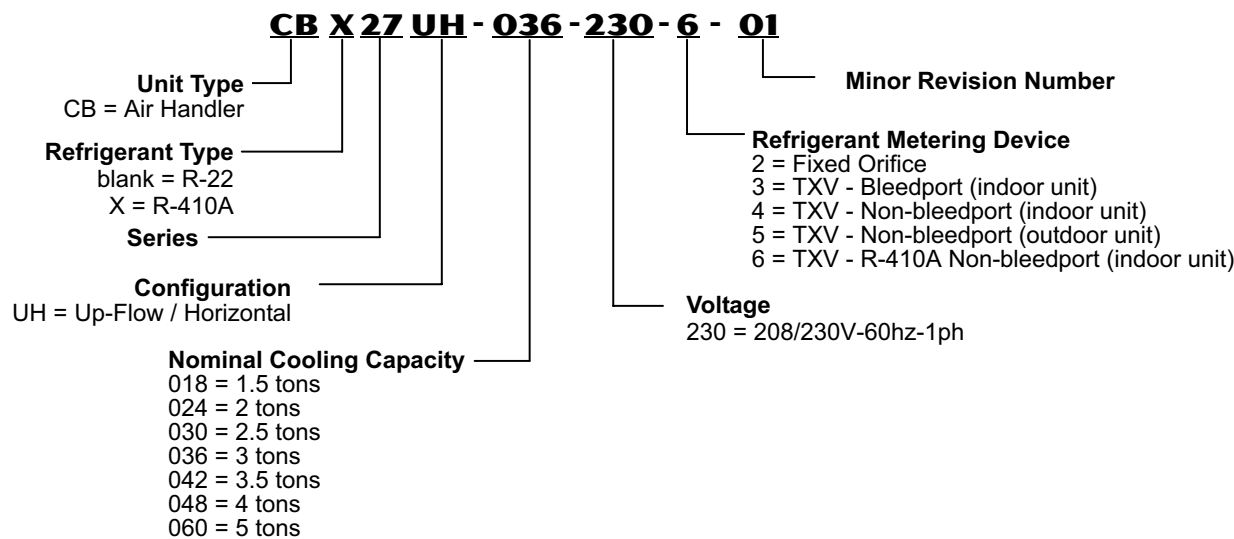
AIR HANDLERS
CBX27UH / CB27UH
ELITE® SERIES
R-410A or R-22 - Up-Flow / Horizontal

Bulletin No. 210477
January 2008
Supersedes July 2007



Nominal Capacity - 1.5 to 5 Tons
Optional Electric Heat - 2.5 to 25 kW

MODEL NUMBER IDENTIFICATION



FEATURES

CONTENTS

Blower Data	Pages 7-8
Dimensions	Pages 13-15
Electric Heat Data	Pages 9-12
Features	Pages 2-4
Installation Clearances	Page 4
Model Number Identification	Page 1
Specifications	Pages 5-6

WARRANTY

All covered components - five years in residential applications, one year in non-residential applications. Refer to Lennox Limited Warranty Certificate included with each unit for additional details.

APPROVALS

Tested with matching air conditioners and heat pump units in the Lennox Research Laboratory environmental test room in accordance with ARI Standard 210/240.

Optional electric heaters are rated in accordance with US Department of Energy (DOE) test procedures and Federal Trade Commission (FTC) labeling regulations.

Blower performance data according to unit tests conducted in Lennox air test chamber.

Air handlers are UL Listed to US and Canadian safety standards and components within are bonded for grounding to meet safety standards for servicing required by CEC and NEC.

ISO 9001 Registered Manufacturing Quality System.

APPLICATIONS

1.5 to 5 ton nominal sizes.

Up-flow or horizontal applications. Down-flow applications with optional conversion kit.

CBX27UH models available for use with R-410A refrigerant. CB27UH models available for use with R-22 refrigerant.

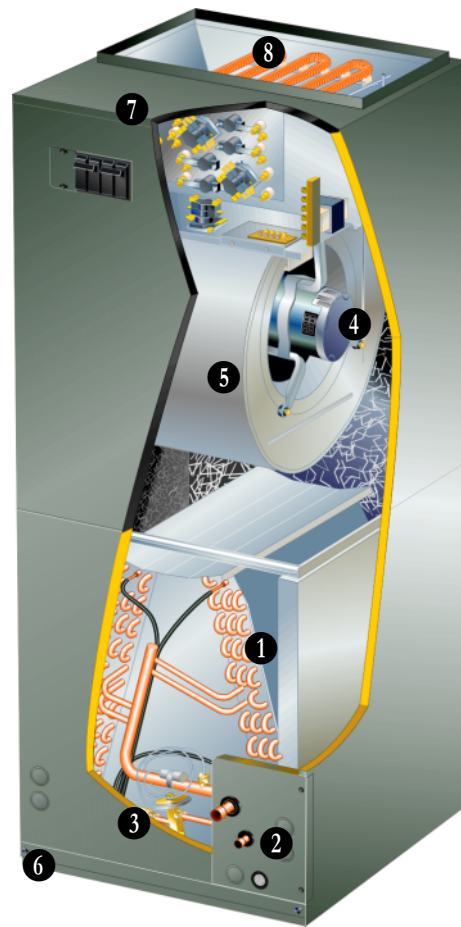
Applicable to expansion valve systems in cooling applications and check and expansion valve systems in heat pump applications.

Wide-range check and expansion valve is factory installed.

See bulletins in section Air Conditioners for cooling capacities.

See bulletins in section Heat Pump Outdoor Units for cooling and heating capacities.

Optional field installed electric heaters available in several sizes for additive heating capacity.



REFRIGERANT SYSTEM

- 1 Copper Tube/Enhanced Fin Indoor Coil**

Lennox designed and fabricated twin coils. Assembled in "A" configuration. Provides extra large surface and contact area, excellent heat transfer and low air resistance for maximum efficiency. Precise circuiting for uniform refrigerant distribution. Precisely spaced ripple-edged aluminum fins fitted to durable seamless copper tubes. Fins are strengthened to resist bending and are equipped with collars that grip tubing for maximum contact area. Lanced fins provide maximum exposure of fin surface to air stream. Long life copper tubing is easy to service. Rifled tubing provides superior heat transfer. Flared shoulder tubing joints and silver soldering provide tight, leakproof joints. Coil thoroughly factory tested under high pressure to insure leakproof construction.
- 2 Refrigerant Line Connections**

Suction (vapor) and liquid lines have sweat connections that extended outside of the cabinet for ease of connection. See dimension drawings for locations.
- 3 Check and Expansion Valve Furnished**

Available with R-410A or R-22 valves. Wide range valve with Chatleff style fitting. Factory installed on all models, internal to cabinet.

FEATURES

BLOWER

Programmable Multi-Speed Blower Motor

- 4 Programmable high efficiency multi-speed blower motor. By maintaining constant torque output, blower motor can deliver more uniform (but not constant) airflow over the static pressure range. Programmable multi-speed operation is achieved by the use of an ECM (Electronically Commutated Motor) motor.
- NOTE - Blower motor features programmed electronic braking. The integral control brakes the motor near the end of the supply air blower operation, allowing the motor to maintain a more controlled ramping shut-down. Leadless blower motor features simple plug-in connections. Choice of blower speeds is available. See Blower Data tables. Blower speed change is easily accomplished by a simple wiring change.



Blower Assembly

- 5 Lennox designed and built, direct drive blower. Each blower is statically and dynamically balanced as an assembly before installation in the unit. Blower motor is resiliently mounted to blower assembly. Blower slides out of cabinet for servicing.

FILTER

- 6 Tool-less access to filter area for quick and easy servicing. Disposable frame type filter furnished and factory installed in rails in cabinet. See Specifications tables for sizes.

CABINET

- 7 Constructed of heavy-gauge galvanized steel. Completely insulated with thick fiberglass insulation. Pre-painted steel cabinets have mildly textured enamel finish with primer coat on unpainted side of all panels. Units are shipped in one piece but may be disassembled into two separate sections for ease of installation in tight applications. See dimension drawings. Thick rubber gasket between sections of the two piece cabinets provides an air tight seal. No external screw heads on sides of cabinet for tight installations without damage to walls or woodwork. Removable panels provide complete service access. Electrical inlets provided in sides and top of cabinet. See dimension drawings for locations.

Up-Flow/Horizontal Capability (Optional Down-Flow)

Shipped for up-flow and horizontal left-hand discharge. May be field converted to horizontal right-hand air discharge by repositioning horizontal drain pan. Optional down-flow kit available for field conversion.

Dual Position Drain Pans

Drain pans designed for up-flow, down-flow or horizontal applications. Deep, corrosion resistant plastic drain pans have dual pipe drains. See dimension drawings.

OPTIONS

Down-Flow Combustible Floor Base

Additive base required for models with electric heat installed in down-flow position on combustible floors.

Down-Flow Conversion Kit

Required for field conversion to down-flow position. Kit consists of drip shields and 2 brackets for repositioning coil and drain pan. See Specifications table.

Horizontal Support Frame Kit

Provides support of unit in horizontal applications. Consists of (2) 1 x 1-1/2 x 32-5/8 in. and (2) 1 x 3 x 53-7/8 in. painted heavy gauge cold rolled steel support channels with assembly and suspending holes. Bolts and nuts furnished for field assembly. Suspending rods must be field provided.

Side Return Unit Stand (Up-Flow Only)

Raises unit 16 in. above floor for side return air duct connection. Eliminates need for wooden platform construction. All aluminum construction. Two adjustable frames fit -018/024 thru -060 models.

Wall Hanging Bracket Kit (Up-Flow Only)

Allows unit to be hung on wall at any height. Consists of heavy-gauge steel support brackets (one for air handler, one for wall mount). Screws furnished for fastening one bracket to unit. Bolts for fastening one bracket to wall are field provided.

CONTROLS

Transformer and Blower Cooling Relay

24 volt transformer with in-line fuse and blower cooling relay furnished as standard. Factory installed in the unit control box. Terminal strip furnished.

OPTIONS

SignatureStat™ Home Comfort Control

Combination temperature and humidity control in cooling mode. 2 Heat/2 Cool Auto-changeover Controls humidity during cooling operation. Easy-to-use, menu driven thermostat with a back-lit, dot-matrix LCD screen.



Remote outdoor sensor (furnished) allows the thermostat to display outdoor temperature and adjust indoor dewpoint temperature for precision humidity control in cooling mode. Requires Dehumidification Relay Kit, see below. See the SignatureStat Engineering Handbook bulletin in the Controls section for more information.

Dehumidification Relay Kit

Required with SignatureStat™ Home Comfort Control. Provides dehumidification mode when used in conjunction with SignatureStat™. Used with single- or two-stage heat pumps and air conditioners.

Thermostat

See Thermostat bulletins in Controls section and Lennox Price Book for a complete list of thermostats.

FEATURES

OPTIONAL ELECTRIC HEAT

- 8 Field install internal to unit cabinet.
- Available in several voltages and kW sizes.
- See Electric Heat tables.
- Helix wound nichrome heating elements exposed directly in air stream resulting in instant heat transfer, low element temperatures and long service life.
- Each element equipped with accurately located limit control with fixed temperature off setting and automatic reset.
- Supplemental thermal cutoff limit control, provides positive protection in case of excessive temperatures.
- Thermal sequencer relay brings elements on and off line, in sequence and equal increments, with time delay between each.
- Initiates and terminates blower operation.
- Heating control relay(s) furnished as standard.
- Control box and access cover constructed of heavy gauge galvanized steel.
- Factory assembled with controls installed and wired.
- Electric heat low voltage controls plug-in to blower coil unit.

Circuit Breaker Models

ECB29-5CB, -6CB, -8CB, -9CB, -10CB, -12.5CB, -15CB, -20CB, -25CB and -30CB (208/240V-1ph) and ECB29-15CB, -20CB and -25CB (208/240V-3ph) heaters are equipped with circuit breakers for overload and short circuit protection.

Factory wired and mounted on electric heat unit.

Current sensitive and temperature actuated.

Manual reset.

Circuit breakers qualify as disconnect means at unit in many areas, eliminate the need for field provided disconnect.

Consult local electrical code in your area.

EvenHeater™ Models

Electric heat is staged to provide supplemental heat to meet desired comfort levels.

EHC control board stages the heat on and off based on the demand of the provided (field installed) supply plenum thermistor.

Temperature set point (85, 100, 115 or 130°F) is selected by use of a jumper pin on the EHC control board.

ECB29EH-9CB, -12.5CB, -15CB and -20CB heaters are equipped with circuit breakers for overload and short circuit protection.

Factory provided and field mounted in electric heat unit.

Current sensitive and temperature actuated.

Manual reset.

Circuit breakers qualify as disconnect means at unit in many areas, eliminate the need for field provided disconnect.

Consult local electrical code in your area.

OPTIONS

Single-Point Power Source Control Box

Control Box may be used with optional electric heat when single power supply is connected to multi-circuit electric heat.

Field installs external to the unit cabinet on either side or top.

Constructed of heavy gauge steel, baked enamel finish, prepunched mounting holes, electrical inlet knockouts, and terminal strip.

Removeable cover provides easy access.

Dimensions (H x W x D) - 7 x 7 x 4 in.

INSTALLATION CLEARANCES

Cabinet	0 inch (0 mm)
Plenum and Outlet duct on blower/coil units	1 inch (25 mm)
Plenum and Warm air duct within 3 feet (914mm) of cabinet	1 inch (25 mm)
Floor	¹ Combustible

¹ When unit is installed in the down-flow position with electric heat on a combustible floor, an optional down-flow base and optional down-flow conversion kit is required.

SPECIFICATIONS

General Data	R-22 Model Number	CB27UH-018	CB27UH-024	CB27UH-030	CB27UH-036
	R-410A Model Number	CBX27UH-018	CBX27UH-024	CBX27UH-030	CBX27UH-036
	Nominal tonnage	1.5	2	2.5	3
Connections	Suction (vapor) line (o.d.) - in. sweat	3/4	3/4	3/4	3/4
	Liquid line (o.d.) - in. sweat	3/8	3/8	3/8	3/8
	Condensate - in. fpt	(2) 3/4	(2) 3/4	(2) 3/4	(2) 3/4
Indoor Coil	Net face area - ft. ²	4.44	4.44	5.0	5.0
	Tube outside diameter - in.	3/8	3/8	3/8	3/8
	Number of rows	3	3	3	3
	Fins per inch	12	12	12	12
Blower	Wheel nominal diameter x width - in.	10 x 8	10 x 8	11 x 8	11 x 8
	Blower motor output - hp	1/2	1/2	1/2	1/2
¹ Filters	Size of filter - in.	20 x 20 x 1	20 x 20 x 1	20 x 20 x 1	20 x 20 x 1
Shipping Data -1 package - lbs.		148	148	159	159

ELECTRICAL DATA

	Voltage - phase	208/230V-1ph	208/230V-1ph	208/230V-1ph	208/230V-1ph
³ Maximum overcurrent protection (unit only)		15	15	15	15
Minimum circuit ampacity (unit only)		5	5	5	5
Blower motor full load amps		4.1	4.1	4.1	4.1

OPTIONAL ACCESSORIES - MUST BE ORDERED EXTRA

Dehumidification Relay Kit		26W62	26W62	26W62	26W62
Down-Flow Combustible Floor Base		34J73	34J73	34J73	34J73
Down-Flow Conversion Kit		83M57	83M57	83M57	83M57
Electric Heat - See Electric Heat Data tables		2.5 to 20 kW			
Horizontal Support Frame Kit		56J18	56J18	56J18	56J18
Side Return Unit Stand (Up-Flow Only)		45K32	45K32	45K32	45K32
SignatureStat™ Home Comfort Control	2 Heat / 2 Cool - Heat Pump	81M28	81M28	81M28	81M28
	2 Heat/2 Cool - Conventional	81M27	81M27	81M27	81M27
	1 Heat/1 Cool - Conventional or Heat Pump	81M26	81M26	81M26	81M26
Single Point Power Source Control Box		21H39	21H39	21H39	21H39
Wall Hanging Bracket Kit (Up-Flow Only)		45K30	45K30	45K30	45K30

¹ Disposable frame type filter.

³ HACR type circuit breaker or fuse.

SPECIFICATIONS

General Data	R-22 Model Number	CB27UH-042	CB27UH-048	CB27UH-060
	R-410A Model Number	CBX27UH-042	CBX27UH-048	CBX27UH-060
	Nominal tonnage	3.5	4	5
Connections	Suction (vapor) line (o.d.) - in. sweat	7/8	7/8	7/8
	Liquid line (o.d.) - in. sweat	3/8	3/8	3/8
	Condensate - in. fpt	(2) 3/4	(2) 3/4	(2) 3/4
Indoor Coil	Net face area - ft. ²	7.22	7.22	8.33
	Tube outside diameter - in.	3/8	3/8	3/8
	Number of rows	3	3	3
	Fins per inch	12	12	12
Blower	Wheel nominal diameter x width - in.	12 x 9	12 x 9	12 x 9
	Blower motor output - hp	1	1	1
¹ Filters	Size of filter - in.	20 x 24 x 1	20 x 24 x 1	20 x 24 x 1
Shipping Data -1 package lbs.		194	194	216

ELECTRICAL DATA

	Voltage - phase	208/230V-1ph	208/230V- 1ph	208/230V- 1ph
	³ Maximum overcurrent protection (unit only)	15	15	15
	Minimum circuit ampacity (unit only)	10	10	10
	Blower Motor Full Load Amps	7.6	7.6	7.6

OPTIONAL ACCESSORIES - MUST BE ORDERED EXTRA

Dehumidification Relay Kit		26W62	26W62	26W62
Down-Flow Combustible Floor Base		34J73	34J73	34J73
Down-Flow Conversion Kit		83M57	83M57	83M57
Electric Heat - See Electric Heat Data tables		5 to 30 kW		
Horizontal Support Frame Kit		56J18	56J18	56J18
Side Return Unit Stand (Up-Flow Only)		45K32	45K32	45K32
SignatureStat™ Home Comfort Control	2 Heat / 2 Cool - Heat Pump	81M28	81M28	81M28
	2 Heat/2 Cool - Conventional	81M27	81M27	81M27
	1 Heat/1 Cool - Conventional or Heat Pump	81M26	81M26	81M26
Single Point Power Source Control Box		21H39	21H39	21H39
Wall Hanging Bracket Kit (Up-Flow Only)		45K30	45K30	45K30

¹ Disposable frame type filter.

³ HACR type circuit breaker or fuse.

BLOWER DATA**CB(X)27UH-018 BLOWER PERFORMANCE**

External Static Pressure in. w.g.	Air Volume and Motor Watts at 208V										Air Volume and Motor Watts at 230V									
	Tap 1		Tap 2		Tap 3		Tap 4		Tap 5		Tap 1		Tap 2		Tap 3		Tap 4		Tap 5	
	cfm	Watts	cfm	Watts	cfm	Watts	cfm	Watts	cfm	Watts	cfm	Watts	cfm	Watts	cfm	Watts	cfm	Watts	cfm	Watts
.00	815	80	810	77	835	86	855	89	1010	137	820	82	815	77	835	84	850	91	1010	140
.10	720	71	700	68	735	76	790	89	980	142	710	71	715	71	735	77	795	89	975	144
.20	580	59	560	58	665	76	755	99	950	153	570	59	580	60	660	77	755	99	950	154
.30	500	63	450	55	610	78	710	101	905	157	505	64	440	58	615	80	715	102	910	160
.40	400	65	350	59	580	87	685	111	870	166	415	67	355	60	575	89	680	112	875	170
.50	365	74	290	60	505	96	640	114	835	176	355	77	300	64	510	99	630	118	850	179
.60	315	75	280	68	445	100	580	124	800	179	320	77	270	71	450	102	575	129	805	183
.70	N/A	N/A	210	71	390	102	515	128	755	187	N/A	N/A	220	72	395	106	525	137	780	192
.80	N/A	N/A	170	71	355	109	470	136	710	194	N/A	N/A	175	76	365	112	485	144	725	200

CB(X)27UH-024 BLOWER PERFORMANCE

External Static Pressure in. w.g.	Air Volume and Motor Watts at 208V										Air Volume and Motor Watts at 230V									
	Tap 1		Tap 2		Tap 3		Tap 4		Tap 5		Tap 1		Tap 2		Tap 3		Tap 4		Tap 5	
	cfm	Watts	cfm	Watts	cfm	Watts	cfm	Watts	cfm	Watts	cfm	Watts	cfm	Watts	cfm	Watts	cfm	Watts	cfm	Watts
.00	885	89	885	89	930	97	1035	130	1185	184	890	91	895	90	920	99	1040	130	1190	189
.10	755	77	760	77	850	98	995	139	1140	193	785	82	770	78	855	100	1000	142	1145	200
.20	665	73	670	72	820	106	970	148	1100	203	675	76	670	76	820	111	960	152	1110	207
.30	605	77	600	77	775	112	920	154	1070	213	605	80	605	80	780	114	930	156	1085	219
.40	560	84	515	88	725	121	885	165	1025	219	570	88	555	88	745	123	890	166	1035	225
.50	445	95	445	95	675	124	835	171	1000	228	465	99	465	99	670	131	850	172	1010	235
.60	400	98	395	96	570	137	810	179	960	232	405	101	405	101	595	142	815	183	975	246
.70	N/A	N/A	345	101	520	143	705	193	920	242	N/A	N/A	350	106	530	151	710	197	935	248
.80	N/A	N/A	320	106	460	148	625	201	835	254	N/A	N/A	330	112	485	155	660	207	895	260

CB(X)27UH-030 BLOWER PERFORMANCE

External Static Pressure in. w.g.	Air Volume and Motor Watts at 208V										Air Volume and Motor Watts at 230V									
	Tap 1		Tap 2		Tap 3		Tap 4		Tap 5		Tap 1		Tap 2		Tap 3		Tap 4		Tap 5	
	cfm	Watts	cfm	Watts	cfm	Watts	cfm	Watts	cfm	Watts	cfm	Watts	cfm	Watts	cfm	Watts	cfm	Watts	cfm	Watts
.00	1130	128	1175	142	1230	158	1270	177	1345	208	1145	130	1180	142	1235	161	1280	179	1365	212
.10	1045	118	1065	126	1140	151	1240	183	1345	219	1030	118	1085	130	1155	154	1245	183	1345	223
.20	910	103	950	113	1105	160	1205	193	1305	231	915	105	955	116	1120	164	1205	195	1310	237
.30	730	89	870	117	1050	169	1165	202	1250	238	755	91	885	118	1060	171	1170	207	1265	242
.40	605	93	825	120	1020	176	1115	209	1205	248	655	92	830	124	1030	180	1125	213	1230	254
.50	540	101	725	136	980	181	1085	218	1180	257	550	102	745	136	985	184	1090	223	1195	265
.60	470	106	670	145	930	191	1035	224	1140	262	475	107	670	149	945	195	1050	230	1145	270
.70	N/A	N/A	605	154	835	207	995	235	1105	273	N/A	N/A	620	159	860	213	1005	242	1110	280
.80	N/A	N/A	545	159	785	217	950	245	1055	284	N/A	N/A	560	163	805	223	915	258	1050	295

CB(X)27UH-036 BLOWER PERFORMANCE

External Static Pressure in. w.g.	Air Volume and Motor Watts at 208V										Air Volume and Motor Watts at 230V									
	Tap 1		Tap 2		Tap 3		Tap 4		Tap 5		Tap 1		Tap 2		Tap 3		Tap 4		Tap 5	
	cfm	Watts	cfm	Watts	cfm	Watts	cfm	Watts	cfm	Watts	cfm	Watts	cfm	Watts	cfm	Watts	cfm	Watts	cfm	Watts
.00	1250	148	1280	159	1405	207	1480	240	1630	333	1250	149	1285	159	1415	213	1485	245	1645	340
.10	1140	137	1180	147	1370	213	1455	250	1620	341	1160	139	1175	146	1395	223	1460	254	1630	349
.20	1025	124	1115	151	1330	225	1405	259	1580	354	1040	128	1125	155	1345	231	1415	271	1595	361
.30	975	136	1055	158	1285	237	1370	271	1540	360	990	138	1075	161	1305	242	1375	276	1550	371
.40	910	141	1025	166	1245	248	1335	282	1500	371	935	144	1045	171	1275	254	1340	290	1515	383
.50	875	148	970	174	1205	254	1290	292	1460	382	895	154	995	177	1225	261	1310	302	1475	396
.60	805	162	920	183	1160	265	1250	297	1425	390	840	166	955	189	1195	272	1265	308	1445	407
.70	N/A	N/A	865	195	1120	274	1210	307	1380	396	N/A	N/A	900	200	1155	284	1225	319	1415	417
.80	N/A	N/A	780	207	1070	279	1165	319	1345	402	N/A	N/A	810	214	1100	290	1200	330	1380	422

BLOWER DATA**CB(X)27UH-042 BLOWER PERFORMANCE**

External Static Pressure in. w.g.	Air Volume and Motor Watts at 208V										Air Volume and Motor Watts at 230V									
	Tap 1		Tap 2		Tap 3		Tap 4		Tap 5		Tap 1		Tap 2		Tap 3		Tap 4		Tap 5	
	cfm	Watts	cfm	Watts	cfm	Watts	cfm	Watts	cfm	Watts	cfm	Watts	cfm	Watts	cfm	Watts	cfm	Watts	cfm	Watts
.00	1475	198	1530	218	1610	251	1705	295	1805	349	1475	200	1530	222	1615	254	1705	300	1815	350
.10	1370	183	1420	207	1545	251	1660	307	1780	364	1360	184	1435	207	1545	255	1665	310	1775	368
.20	1255	172	1305	189	1515	266	1635	322	1750	378	1245	172	1305	190	1515	269	1630	326	1750	384
.30	1090	153	1250	200	1470	278	1600	336	1705	390	1090	155	1255	203	1470	278	1605	343	1715	395
.40	1010	164	1190	210	1430	295	1560	346	1685	407	1020	165	1200	213	1420	300	1565	351	1680	408
.50	955	177	1145	225	1385	310	1510	373	1640	428	955	178	1150	229	1385	314	1520	373	1650	430
.60	885	183	1090	242	1330	319	1475	384	1590	443	915	183	1095	243	1330	324	1480	390	1595	453
.70	N/A	N/A	1005	248	1255	341	1430	401	1565	457	N/A	N/A	1000	254	1265	344	1440	408	1565	468
.80	N/A	N/A	990	260	1200	355	1365	419	1510	473	N/A	N/A	1000	255	1200	362	1375	429	1515	481

CB(X)27UH-048 BLOWER PERFORMANCE

External Static Pressure in. w.g.	Air Volume and Motor Watts at 208V										Air Volume and Motor Watts at 230V									
	Tap 1		Tap 2		Tap 3		Tap 4		Tap 5		Tap 1		Tap 2		Tap 3		Tap 4		Tap 5	
	cfm	Watts	cfm	Watts	cfm	Watts	cfm	Watts	cfm	Watts	cfm	Watts	cfm	Watts	cfm	Watts	cfm	Watts	cfm	Watts
.00	1440	200	1515	233	1670	304	1690	313	1850	413	1440	202	1525	237	1680	309	1700	319	1860	422
.10	1370	188	1455	224	1650	318	1670	329	1825	421	1370	189	1465	224	1665	324	1685	331	1840	431
.20	1260	173	1425	231	1635	327	1660	337	1825	436	1255	177	1425	235	1650	331	1675	342	1840	443
.30	1120	166	1380	242	1605	343	1630	351	1800	447	1125	167	1380	243	1625	349	1645	358	1815	461
.40	1055	172	1335	260	1565	352	1595	367	1770	462	1055	177	1335	262	1585	358	1605	373	1780	471
.50	960	190	1295	273	1530	372	1555	377	1735	479	970	194	1290	278	1535	378	1570	385	1745	490
.60	895	195	1230	285	1490	389	1510	401	1695	489	890	201	1230	296	1500	396	1525	408	1720	506
.70	N/A	N/A	1145	304	1445	407	1470	418	1650	513	N/A	N/A	1140	308	1455	415	1490	425	1665	533
.80	N/A	N/A	1095	317	1385	416	1430	432	1605	530	N/A	N/A	1075	325	1405	435	1430	445	1630	551

CB(X)27UH-060 BLOWER PERFORMANCE

External Static Pressure in. w.g.	Air Volume and Motor Watts at 208V										Air Volume and Motor Watts at 230V									
	Tap 1		Tap 2		Tap 3		Tap 4		Tap 5		Tap 1		Tap 2		Tap 3		Tap 4		Tap 5	
	cfm	Watts	cfm	Watts	cfm	Watts	cfm	Watts	cfm	Watts	cfm	Watts	cfm	Watts	cfm	Watts	cfm	Watts	cfm	Watts
.00	1490	207	1765	331	1970	455	2010	494	2365	799	1505	212	1775	337	1980	461	2025	497	2365	822
.10	1395	194	1740	344	1930	466	1985	507	2328	810	1400	198	1745	352	1950	475	1990	514	2345	839
.20	1320	192	1700	354	1900	480	1955	522	2300	827	1325	196	1705	361	1910	490	1965	532	2310	850
.30	1275	206	1670	367	1875	487	1915	531	2265	842	1270	211	1675	374	1890	507	1930	540	2285	863
.40	1220	214	1620	378	1825	504	1890	544	2235	850	1230	224	1635	390	1840	516	1905	556	2255	882
.50	1170	226	1575	395	1795	519	1850	555	2205	861	1185	231	1590	402	1815	532	1875	573	2225	891
.60	1135	241	1535	409	1750	529	1810	569	2175	872	1140	239	1545	419	1785	550	1825	585	2190	908
.70	N/A	N/A	1490	417	1720	543	1775	585	2135	885	N/A	N/A	1510	426	1735	562	1795	602	2155	922
.80	N/A	N/A	1470	429	1685	557	1730	592	2085	893	N/A	N/A	1480	442	1700	574	1760	619	2120	940

ELECTRIC HEAT DATA

CB(X)27UH-018-024

SINGLE PHASE ELECTRIC HEAT						CB(X)27UH-018			CB(X)27UH-024			
Model Number	No. of Stages	Input			² Blower Motor Full Load Amps	³ Minimum Circuit Ampacity	⁵ Maximum Overcurrent Protection	² Blower Motor Full Load Amps	³ Minimum Circuit Ampacity		⁵ Maximum Overcurrent Protection	
		Volts	kW	¹ Btuh					Circuit 1	Circuit 2	Circuit 1	Circuit 2
2.5 kW 4 lbs. ECB29-2.5 (28K30)	1	208	1.9	6,400	4.1	16	20	Not Available				
		220	2.1	7,200	4.1	18	20					
		230	2.3	7,800	4.1	18	20					
		240	2.5	8,500	4.1	18	20					
5 kW 4 lbs. ECB29-5 (28K31) Terminal Block ECB29-5CB (28K32) 30A Circuit breaker	1	208	3.8	12,800	4.1	28	30	4.1	28	---	30	---
		220	4.2	14,300	4.1	31	35	4.1	31	---	35	---
		230	4.6	15,700	4.1	31	35	4.1	31	---	35	---
		240	5.0	17,100	4.1	31	35	4.1	31	---	35	---
6 kW 4 lbs. ECB29-6 (47L22) Terminal Block ECB29-6CB (47L23) 35A Circuit breaker	1	208	4.5	15,400	4.1	32	35	4.1	32	---	35	---
		220	5.0	17,100	4.1	36	40	4.1	36	---	40	---
		230	5.5	18,800	4.1	36	40	4.1	36	---	40	---
		240	6.0	20,500	4.1	36	40	4.1	36	---	40	---
8 kW 5 lbs. ECB29-8 (28K33) Terminal Block ECB29-8CB (28K34) 45A Circuit breaker	1	208	6.0	20,500	4.1	41	45	4.1	41	---	45	---
		220	6.7	22,900	4.1	47	50	4.1	47	---	50	---
		230	7.3	25,100	4.1	47	50	4.1	47	---	50	---
		240	8.0	27,300	4.1	47	50	4.1	47	---	50	---
9 kW 5 lbs. ECB29-9CB (10L11) 50A Circuit breaker ECB29EH-9CB (91K67) 50A Circuit breaker	2	208	6.8	23,100	4.1	46	50	4.1	46	---	50	---
		220	7.6	25,800	4.1	52	60	4.1	52	---	60	---
		230	8.3	28,200	4.1	52	60	4.1	52	---	60	---
		240	9.0	30,700	4.1	52	60	4.1	52	---	60	---
10 kW 6 lbs. ECB29-10 (28K35) Terminal Block ECB29-10CB (28K36) 60A Circuit breaker	2	208	7.5	25,600	4.1	50	50	4.1	50	---	4 50	---
		220	8.4	28,700	4.1	57	60	4.1	57	---	60	---
		230	9.2	31,400	4.1	57	60	4.1	57	---	60	---
		240	10.0	34,100	4.1	57	60	4.1	57	---	60	---
12.5 kW 10 lbs. ECB29-12.5CB (28K37) (1) 25A & (1) 50A Circuit breaker ECB29EH-12.5CB (91K68) (1) 25A & (1) 50A Circuit breaker	2	208	7.5	25,600	Not Available			4.1	24	38	25	4 40
		220	8.4	28,700	Not Available			4.1	27	43	30	4 45
		230	9.2	31,400	Not Available			4.1	27	43	30	4 45
		240	10.0	34,100	Not Available			4.1	27	43	30	4 45
15 kW 12 lbs. ECB29-15CB (28K38) (1) 30A & (1) 60A Circuit breaker ECB29EH-15CB (91K69) (1) 30A & (1) 60A Circuit breaker	2	208	11.3	38,400	Not Available			4.1	28	45	30	4 45
		220	12.6	43,000	Not Available			4.1	31	52	35	60
		230	13.8	47,000	Not Available			4.1	31	52	35	60
		240	15.0	51,200	Not Available			4.1	31	52	35	60

NOTE - Circuit 1 Minimum Circuit Ampacity includes the Blower Motor Full Load Amps.

¹ Electric heater capacity only — does not include additional blower motor heat capacity.

² Amps shown are for blower motor only.

³ Refer to National or Canadian Electrical Code manual to determine wire, fuse and disconnect size requirements. Use wires suitable for at least 167°F.

⁴ Bold text indicates that the circuit breaker on "CB" circuit breaker models must be replaced with size noted.

⁵ HACR type circuit breaker or fuse.

ELECTRIC HEAT DATA

CB(X)27UH-030-036

SINGLE PHASE ELECTRIC HEAT

						CB(X)27UH-030				CB(X)27UH-036									
						No. of Stages	Input			² Blower Motor Full Load Amps	³ Minimum Circuit Ampacity		⁵ Maximum Overcurrent Protection		² Blower Motor Full Load Amps	³ Minimum Circuit Ampacity		⁵ Maximum Overcurrent Protection	
							Volts	kW	¹ Btuh		Circuit 1	Circuit 2	Circuit 1	Circuit 2		Circuit 1	Circuit 2	Circuit 1	Circuit 2
5 kW 4 lbs.	ECB29-5 (28K31) Terminal Block ECB29-5CB (28K32) 30A Circuit breaker	1	208	3.8	12,800	4.1	28	---	30	---	4.1	28	---	30	---				
			220	4.2	14,300	4.1	31	---	35	---	4.1	31	---	35	---				
			230	4.6	15,700	4.1	31	---	35	---	4.1	31	---	35	---				
			240	5.0	17,100	4.1	31	---	35	---	4.1	31	---	35	---				
6 kW 4 lbs.	ECB29-6 (47L22) Terminal Block ECB29-6CB (47L23) 35A Circuit breaker	1	208	4.5	15,400	4.1	32	---	35	---	4.1	32	---	35	---				
			220	5.0	17,100	4.1	36	---	40	---	4.1	36	---	40	---				
			230	5.5	18,800	4.1	36	---	40	---	4.1	36	---	40	---				
			240	6.0	20,500	4.1	36	---	40	---	4.1	36	---	40	---				
8 kW 5 lbs.	ECB29-8 (28K33) Terminal Block ECB29-8CB (28K34) 45A Circuit breaker	1	208	6.0	20,500	4.1	41	---	45	---	4.1	41	---	45	---				
			220	6.7	22,900	4.1	47	---	50	---	4.1	47	---	50	---				
			230	7.3	25,100	4.1	47	---	50	---	4.1	47	---	50	---				
			240	8.0	27,300	4.1	47	---	50	---	4.1	47	---	50	---				
9 kW 5 lbs.	ECB29-9CB (10L11) 50A Circuit breaker ECB29EH-9CB (91K67) 50A Circuit breaker	2	208	6.8	25,600	4.1	46	---	50	---	4.1	46	---	50	---				
			220	7.6	28,700	4.1	52	---	60	---	4.1	52	---	60	---				
			230	8.3	31,400	4.1	52	---	60	---	4.1	52	---	60	---				
			240	9.0	34,100	4.1	52	---	60	---	4.1	52	---	60	---				
10 kW 6 lbs.	ECB29-10 (28K35) Terminal Block ECB29-10CB (28K36) 60A Circuit breaker	2	208	7.5	25,600	4.1	50	---	⁴ 50	---	4.1	50	---	⁴ 50	---				
			220	8.4	28,700	4.1	57	---	60	---	4.1	57	---	60	---				
			230	9.2	31,400	4.1	57	---	60	---	4.1	57	---	60	---				
			240	10.0	34,100	4.1	57	---	60	---	4.1	57	---	60	---				
12.5 kW 10 lbs.	ECB29-12.5CB (28K37) (1) 25A & (1) 50A Circuit breaker ECB29EH-12.5CB (91K68) (1) 25A & (1) 50A Circuit breaker	2	208	9.4	32,000	4.1	24	38	25	⁴ 40	4.1	24	38	25	⁴ 40				
			220	10.5	35,800	4.1	27	43	30	⁴ 45	4.1	27	43	30	⁴ 45				
			230	11.5	39,200	4.1	27	43	30	⁴ 45	4.1	27	43	30	⁴ 45				
			240	12.5	42,600	4.1	27	43	30	⁴ 45	4.1	27	43	30	⁴ 45				
15 kW 12 lbs.	ECB29-15CB (28K38) (1) 30A & (1) 60A Circuit Breaker ECB29EH-15CB (91K69) (1) 30A & (1) 60A Circuit Breaker	2	208	11.3	38,400	4.1	28	45	30	⁴ 45	4.1	28	45	30	⁴ 45				
			220	12.6	43,000	4.1	31	52	35	60	4.1	31	52	35	60				
			230	13.8	47,000	4.1	31	52	35	60	4.1	31	52	35	60				
			240	15.0	51,200	4.1	31	52	35	60	4.1	31	52	35	60				
20 kW 19 lbs.	ECB29-20CB (11L31) (1) 50A & (1) 60A Circuit Breaker ECB29EH-20CB (91K70) (1) 50A & (1) 60A Circuit Breaker	2	208	15.0	51,200	Not Available				4.1	46	50	50	⁴ 50					
			220	16.8	57,300	Not Available				4.1	52	57	60	60					
			230	18.4	62,700	Not Available				4.1	52	57	60	60					
			240	20.0	68,200	Not Available				4.1	52	57	60	60					

THREE PHASE ELECTRIC HEAT

						CB(X)27UH-030				CB(X)27UH-036									
						No. of Stages	Input			² Blower Motor Full Load Amps	³ Minimum Circuit Ampacity		⁵ Maximum Overcurrent Protection		² Blower Motor Full Load Amps	³ Minimum Circuit Ampacity		⁵ Maximum Overcurrent Protection	
							Volts	kW	¹ Btuh		Circuit 1	Circuit 2	Circuit 1	Circuit 2		Circuit 1	Circuit 2	Circuit 1	Circuit 2
8 kW 5 lbs.	ECB29-8 (28K42) Terminal Block	1	208	6.0	20,500	4.1	26	---	30	---	4.1	26	---	30	---				
			220	6.7	22,900	4.1	29	---	30	---	4.1	29	---	30	---				
			230	7.3	25,100	4.1	29	---	30	---	4.1	29	---	30	---				
			240	8.0	27,300	4.1	29	---	30	---	4.1	29	---	30	---				
10 kW 6 lbs.	ECB29-10 (28K43) Terminal Block	1	208	7.5	25,600	4.1	31	---	35	---	4.1	31	---	35	---				
			220	8.4	28,700	4.1	35	---	35	---	4.1	35	---	35	---				
			230	9.2	31,400	4.1	35	---	35	---	4.1	35	---	35	---				
			240	10.0	34,100	4.1	35	---	35	---	4.1	35	---	35	---				
15 kW 12 lbs.	ECB29-15CB (28K44) (1) 50A Circuit breaker	1	208	11.3	38,400	4.1	44	---	45	---	4.1	44	---	45	---				
			220	12.6	43,000	4.1	50	---	50	---	4.1	50	---	50	---				
			230	13.5	47,000	4.1	50	---	50	---	4.1	50	---	50	---				
			240	15.0	51,200	4.1	50	---	50	---	4.1	50	---	50	---				
20 kW 19 lbs.	ECB29-20CB (28K45) (2) 35A Circuit breaker	2	208	15.0	51,200	Not Available				4.1	31	26	35	⁴ 30					
			220	16.8	57,300	Not Available				4.1	35	30	35	⁴ 30					
			230	18.4	62,700	Not Available				4.1	35	30	35	⁴ 30					
			240	20.0	68,200	Not Available				4.1	35	30	35	⁴ 30					

NOTE - Circuit 1 Minimum Circuit Ampacity includes the Blower Motor Full Load Amps.

¹ Electric heater capacity only — does not include additional blower motor heat capacity.

² Amps shown are for blower motor only.

³ Refer to National or Canadian Electrical Code manual to determine wire, fuse and disconnect size requirements. Use wires suitable for at least 167°F.

⁴ **Bold text indicates that the circuit breaker on "CB" circuit breaker models must be replaced with size noted.**

⁵ HACR type circuit breaker or fuse.

ELECTRIC HEAT DATA

CB(X)27UH-042-048

SINGLE PHASE ELECTRIC HEAT						CB(X)27UH-042						CB(X)27UH-048							
Model Number	Model Number	No. of Stages	Input			² Blower Motor Full Load Amps	³ Minimum Circuit Ampacity			⁵ Maximum Overcurrent Protection			² Blower Motor Full Load Amps	³ Minimum Circuit Ampacity			⁵ Maximum Overcurrent Protection		
			Volts	kW	¹ Btuh		1	2	3	1	2	3		1	2	3			
5 kW 4 lbs.	ECB29-5 (28K31) Terminal Block	1	208	3.8	12,800	7.6	32	---	---	35	---	---	7.6	32	---	---	35	---	---
	ECB29-5CB (28K32) 30A Circuit breaker		220	4.2	14,300	7.6	36	---	---	40	---	---	7.6	36	---	---	40	---	---
			230	4.6	15,700	7.6	36	---	---	40	---	---	7.6	36	---	---	40	---	---
			240	5.0	17,100	7.6	36	---	---	40	---	---	7.6	36	---	---	40	---	---
6 kW 4 lbs.	ECB29-6 (47L22) Terminal Block	1	208	4.5	15,400	7.6	37	---	---	40	---	---	7.6	37	---	---	40	---	---
	ECB29-6CB (47L23) 35A Circuit breaker		220	5.0	17,100	7.6	41	---	---	45	---	---	7.6	41	---	---	45	---	---
			230	5.5	18,800	7.6	41	---	---	45	---	---	7.6	41	---	---	45	---	---
			240	6.0	20,500	7.6	41	---	---	45	---	---	7.6	41	---	---	45	---	---
8 kW 5 lbs.	ECB29-8 (28K33) Terminal Block	1	208	6.0	20,500	7.6	46	---	---	50	---	---	7.6	46	---	---	50	---	---
	ECB29-8CB (28K34) 45A Circuit breaker		220	6.7	22,900	7.6	51	---	---	60	---	---	7.6	51	---	---	60	---	---
			230	7.3	25,100	7.6	51	---	---	60	---	---	7.6	51	---	---	60	---	---
			240	8.0	27,300	7.6	51	---	---	60	---	---	7.6	51	---	---	60	---	---
9 kW 5 lbs.	ECB29-9CB (10L11) 50A Circuit breaker	2	208	6.8	25,600	7.6	50	---	---	50	---	---	7.6	50	---	---	50	---	---
	ECB29EH-9CB (91K67) 50A Circuit breaker		220	7.6	28,700	7.6	56	---	---	60	---	---	7.6	56	---	---	60	---	---
			230	8.3	31,400	7.6	56	---	---	60	---	---	7.6	56	---	---	60	---	---
			240	9.0	34,100	7.6	56	---	---	60	---	---	7.6	56	---	---	60	---	---
12.5 kW 10 lbs.	ECB29-12.5CB (28K37) (1) 25A & (1) 50A Circuit breaker	2	208	9.4	32,000	7.6	28	38	---	30	40	---	7.6	28	38	---	30	40	---
	ECB29EH-12.5CB (91K68) (1) 25A & (1) 50A Circuit breaker		220	10.5	35,800	7.6	31	43	---	35	45	---	7.6	31	43	---	35	45	---
			230	11.5	39,200	7.6	31	43	---	35	45	---	7.6	31	43	---	35	45	---
			240	12.5	42,600	7.6	31	43	---	35	45	---	7.6	31	43	---	35	45	---
15 kW 12 lbs.	ECB29-15CB (28K38) (1) 30A & (1) 60A Circuit breaker	2	208	11.3	38,400	7.6	32	45	---	35	4 45	---	7.6	32	45	---	35	4 45	---
	ECB29EH-15CB (91K69) (1) 30A & (1) 60A Circuit breaker		220	12.6	43,000	7.6	36	52	---	40	60	---	7.6	36	52	---	40	60	---
			230	13.5	47,000	7.6	36	52	---	40	60	---	7.6	36	52	---	40	60	---
			240	15.0	51,200	7.6	36	52	---	40	60	---	7.6	36	52	---	40	60	---
20 kW 19 lbs.	ECB29-20CB (11L31) (1) 50A & (1) 60A Circuit breaker	2	208	15.0	51,200	7.6	50	50	---	50	4 50	---	7.6	50	50	---	50	4 50	---
	ECB29EH-20CB (91K70) (1) 50A & (1) 60A Circuit breaker		220	16.8	57,300	7.6	56	57	---	60	60	---	7.6	56	57	---	60	60	---
			230	18.4	62,700	7.6	56	57	---	60	60	---	7.6	56	57	---	60	60	---
			240	20.0	68,200	7.6	56	57	---	60	60	---	7.6	56	57	---	60	60	---
25 kW 19 lbs.	ECB29-25CB (28K40) (3) 50A Circuit breakers	3	208	18.8	64,100	7.6	50	41	41	50	4 45 4 45	---	7.6	50	41	41	50	4 45 4 45	---
			220	21.0	71,700	7.6	53	43	43	60	4 45 4 45	---	7.6	53	43	43	60	4 45 4 45	---
			230	23.0	78,300	7.6	53	43	43	60	4 45 4 45	---	7.6	53	43	43	60	4 45 4 45	---
			240	25.0	85,300	7.6	53	43	43	60	4 45 4 45	---	7.6	53	43	43	60	4 45 4 45	---
THREE PHASE ELECTRIC HEAT						CB(X)27UH-042						CB(X)27UH-048							
8 kW 5 lbs.	ECB29-8 (28K42) Terminal block	1	208	6.0	20,500	7.6	30	---	---	30	---	---	7.6	30	---	---	30	---	---
			220	6.7	22,900	7.6	33	---	---	35	---	---	7.6	33	---	---	35	---	---
			230	7.3	25,100	7.6	33	---	---	35	---	---	7.6	33	---	---	35	---	---
			240	8.0	27,300	7.6	33	---	---	35	---	---	7.6	33	---	---	35	---	---
10 kW 6 lbs.	ECB29-10 (28K43) Terminal Block	1	208	7.5	25,600	7.6	36	---	---	40	---	---	7.6	36	---	---	40	---	---
			220	8.4	28,700	7.6	40	---	---	40	---	---	7.6	40	---	---	40	---	---
			230	9.2	31,400	7.6	40	---	---	40	---	---	7.6	40	---	---	40	---	---
			240	10.0	34,100	7.6	40	---	---	40	---	---	7.6	40	---	---	40	---	---
15 kW 12 lbs.	ECB29-15CB (28K44) 50A Circuit breaker	1	208	11.3	38,400	7.6	49	---	---	50	---	---	7.6	49	---	---	50	---	---
			220	12.6	43,000	7.6	55	---	---	60	---	---	7.6	55	---	---	60	---	---
			230	13.5	47,000	7.6	55	---	---	60	---	---	7.6	55	---	---	60	---	---
			240	15.0	51,200	7.6	55	---	---	60	---	---	7.6	55	---	---	60	---	---
20 kW 19 lbs.	ECB29-20CB (28K45) (2) 35A Circuit breaker	2	208	15.0	51,200	7.6	36	26	---	40	4 30	---	7.6	36	26	---	40	4 30	---
			220	16.8	57,300	7.6	40	30	---	40	4 30	---	7.6	40	30	---	40	4 30	---
			230	18.4	62,700	7.6	40	30	---	40	4 30	---	7.6	40	30	---	40	4 30	---
			240	20.0	68,200	7.6	40	30	---	40	4 30	---	7.6	40	30	---	40	4 30	---
25 kW 19 lbs.	ECB29-25CB (28K46) (2) 45A Circuit breaker	2	208	18.8	64,100	7.6	42	33	---	50	4 35	---	7.6	42	33	---	50	4 35	---
			220	21.0	71,700	7.6	47	38	---	50	4 40	---	7.6	47	38	---	50	4 40	---
			230	23.0	78,300	7.6	47	38	---	50	4 40	---	7.6	47	38	---	50	4 40	---
			240	25.0	85,300	7.6	47	38	---	50	4 40	---	7.6	47	38	---	50	4 40	---

NOTE - Circuit 1 Minimum Circuit Ampacity includes the Blower Motor Full Load Amps.

¹ Electric heater capacity only — does not include additional blower motor heat capacity.

² Amps shown are for blower motor only.

³ Refer to National or Canadian Electrical Code manual to determine wire, fuse and disconnect size requirements. Use wires suitable for at least 167°F.

⁴ **Bold text indicates that the circuit breaker on "CB" circuit breaker models must be replaced with size noted.**

⁵ HACR type circuit breaker or fuse.

ELECTRIC HEAT DATA

CB(X)27UH-060

SINGLE PHASE ELECTRIC HEAT

CB(X)27UH-060

	Model Number	No. of Stages	Input			² Blower Motor Full Load Amps	³ Minimum Circuit Ampacity			⁵ Maximum Overcurrent Protection		
			Volts	kW	1 Btuh		Circuit			Circuit		
							1	2	3	1	2	3
5 kW 4 lbs.	ECB29-5 (28K31) Terminal Block ECB29-5CB (28K32) 30A Circuit breaker	1	208	3.8	12,800	7.6	32	---	---	35	---	---
			220	4.2	14,300	7.6	36	---	---	40	---	---
			230	4.6	15,700	7.6	36	---	---	40	---	---
			240	5.0	17,100	7.6	36	---	---	40	---	---
6 kW 4 lbs.	ECB29-6 (47L22) Terminal Block ECB29-6CB (47L23) 35A Circuit breaker	1	208	4.5	15,400	7.6	37	---	---	40	---	---
			220	5.0	17,100	7.6	41	---	---	45	---	---
			230	5.5	18,800	7.6	41	---	---	45	---	---
			240	6.0	20,500	7.6	41	---	---	45	---	---
8 kW 5 lbs.	ECB29-8 (28K33) Terminal Block ECB29-8CB (28K34) 45A Circuit breaker	1	208	6.0	20,500	7.6	46	---	---	50	---	---
			220	6.7	22,900	7.6	51	---	---	60	---	---
			230	7.3	25,100	7.6	51	---	---	60	---	---
			240	8.0	27,300	7.6	51	---	---	60	---	---
9 kW 5 lbs.	ECB29-9CB (10L11) 50A Circuit breaker ECB29EH-9CB (91K67) 50A Circuit breaker	2	208	6.8	25,600	7.6	50	---	---	50	---	---
			220	7.6	28,700	7.6	56	---	---	60	---	---
			230	8.3	31,400	7.6	56	---	---	60	---	---
			240	9.0	34,100	7.6	56	---	---	60	---	---
12.5 kW 10 lbs.	ECB29-12.5CB (28K37) (1) 25A & (1) 50A Circuit breaker ECB29EH-12.5CB (91K68) (1) 25A & (1) 50A Circuit breaker	2	208	9.4	32,000	7.6	28	38	---	30	40	---
			220	10.5	35,800	7.6	31	43	---	35	45	---
			230	11.5	39,200	7.6	31	43	---	35	45	---
			240	12.5	42,600	7.6	31	43	---	35	45	---
15 kW 12 lbs.	ECB29-15CB (28K38) (1) 30A & (1) 60A Circuit breaker ECB29EH-15CB (91K69) (1) 30A & (1) 60A Circuit breaker	2	208	11.3	38,400	7.6	32	45	---	35	⁴ 45	---
			220	12.6	43,000	7.6	36	52	---	40	60	---
			230	13.5	47,000	7.6	36	52	---	40	60	---
			240	15.0	51,200	7.6	36	52	---	40	60	---
20 kW 19 lbs.	ECB29-20CB (11L31) (1) 50A & (1) 60A Circuit breaker ECB29EH-20CB (91K70) (1) 50A & (1) 60A Circuit breaker	2	208	15.0	51,200	7.6	50	50	---	50	⁴ 50	---
			220	16.8	57,300	7.6	56	57	---	60	60	---
			230	18.4	62,700	7.6	56	57	---	60	60	---
			240	20.0	68,200	7.6	56	57	---	60	60	---
25 kW 19 lbs.	ECB29-25CB (28K40) (3) 50A Circuit breakers	3	208	18.8	64,100	7.6	50	41	41	50	⁴ 45	⁴ 45
			220	21.0	71,700	7.6	53	43	43	60	⁴ 45	⁴ 45
			230	23.0	78,300	7.6	53	43	43	60	⁴ 45	⁴ 45
			240	25.0	85,300	7.6	53	43	43	60	⁴ 45	⁴ 45

THREE PHASE ELECTRIC HEAT

CB(X)27UH-060

8 kW 5 lbs.	ECB29-8 (28K42) Terminal block	1	208	6.0	20,500	7.6	30	---	---	30	---	---
			220	6.7	22,900	7.6	33	---	---	35	---	---
			230	7.3	25,100	7.6	33	---	---	35	---	---
			240	8.0	27,300	7.6	33	---	---	35	---	---
10 kW 6 lbs.	ECB29-10 (28K43) Terminal Block	1	208	7.5	25,600	7.6	36	---	---	40	---	---
			220	8.4	28,700	7.6	40	---	---	40	---	---
			230	9.2	31,400	7.6	40	---	---	40	---	---
			240	10.0	34,100	7.6	40	---	---	40	---	---
15 kW 12 lbs.	ECB29-15CB (28K44) 50A Circuit breaker	1	208	11.3	38,400	7.6	49	---	---	50	---	---
			220	12.6	43,000	7.6	55	---	---	60	---	---
			230	13.5	47,000	7.6	55	---	---	60	---	---
			240	15.0	51,200	7.6	55	---	---	60	---	---
20 kW 19 lbs.	ECB29-20CB (28K45) (2) 35A Circuit breaker	2	208	15.0	51,200	7.6	36	26	---	⁴ 40	⁴ 30	---
			220	16.8	57,300	7.6	40	30	---	⁴ 40	⁴ 30	---
			230	18.4	62,700	7.6	40	30	---	⁴ 40	⁴ 30	---
			240	20.0	68,200	7.6	40	30	---	⁴ 40	⁴ 30	---
25 kW 19 lbs.	ECB29-25CB (28K46) (2) 45A Circuit breaker	2	208	18.8	64,100	7.6	42	33	---	50	⁴ 35	---
			220	21.0	71,700	7.6	47	38	---	50	⁴ 40	---
			230	23.0	78,300	7.6	47	38	---	50	⁴ 40	---
			240	25.0	85,300	7.6	47	38	---	50	⁴ 40	---

NOTE - Circuit 1 Minimum Circuit Ampacity includes the Blower Motor Full Load Amps.

¹ Electric heater capacity only — does not include additional blower motor heat capacity.

² Amps shown are for blower motor only.

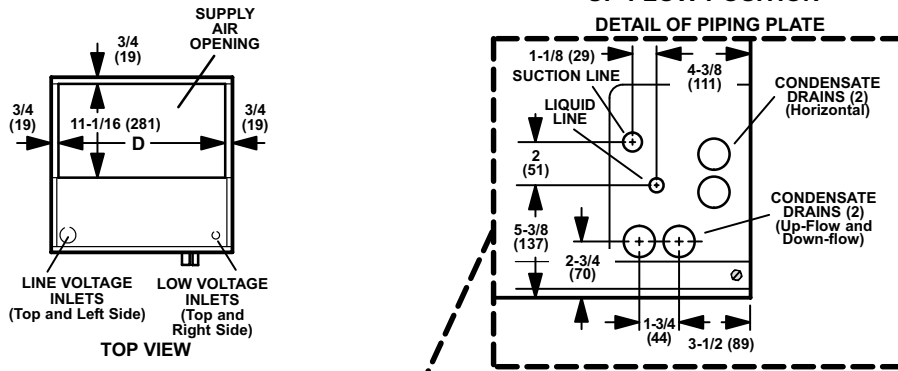
³ Refer to National or Canadian Electrical Code manual to determine wire, fuse and disconnect size requirements. Use wires suitable for at least 167°F.

⁴ **Bold text indicates that the circuit breaker on "CB" circuit breaker models must be replaced with size noted.**

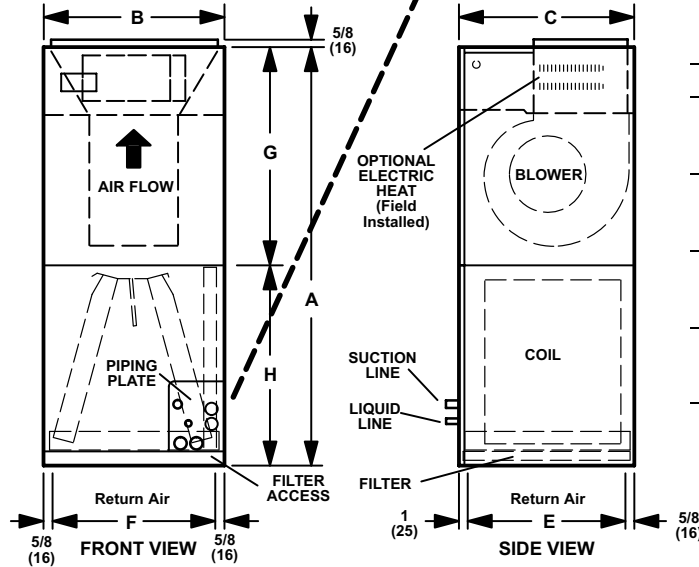
⁵ HACR type circuit breaker or fuse.

DIMENSIONS - INCHES (MM)

UP-FLOW POSITION



Note - Units are shipped in one piece but may be disassembled into two separate sections for ease of installation.

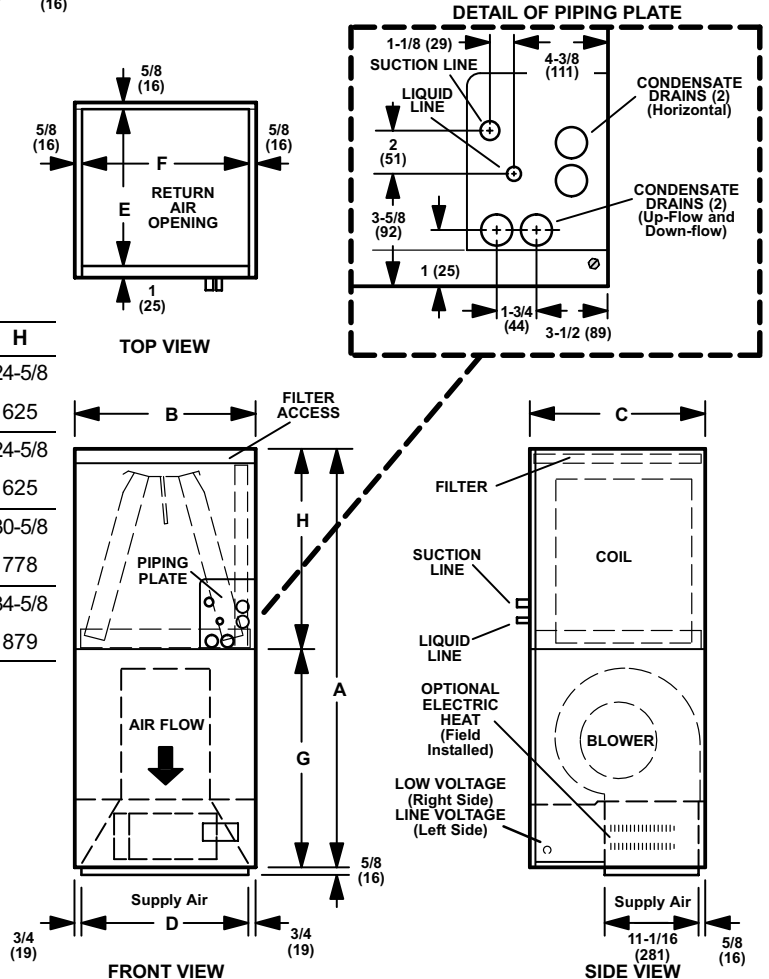


Model No.		A	B	C	D	E	F	G	H
CB(X)27UH-018	in.	49-1/4	21-1/4	20-5/8	19-3/4	19	20	24-5/8	24-5/8
CB(X)27UH-024	mm	1251	540	524	502	483	508	625	625
CB(X)27UH-030	in.	51	21-1/4	22-5/8	19-3/4	21	20	26-3/8	24-5/8
CB(X)27UH-036	mm	1295	540	575	502	533	508	670	625
CB(X)27UH-042	in.	58-1/2	21-1/4	24-5/8	19-3/4	23	20	27-7/8	30-5/8
CB(X)27UH-048	mm	1486	540	625	502	584	508	708	778
CB(X)27UH-060	in.	62-1/2	21-1/4	24-5/8	19-3/4	23	20	27-7/8	34-5/8
	mm	1588	540	625	502	584	508	708	879

DOWN-FLOW POSITION with Optional Down-Flow Conversion Kit (Required)

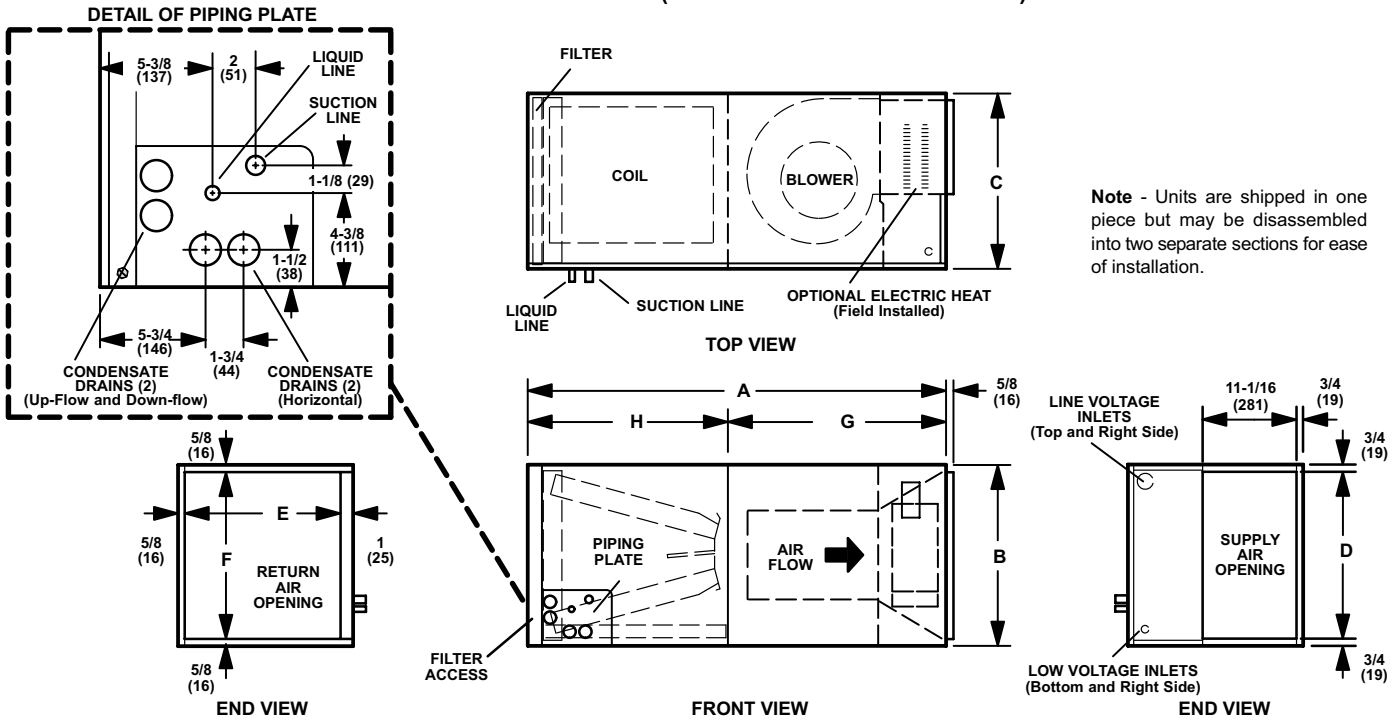
Note - Units are shipped in one piece but may be disassembled into two separate sections for ease of installation.

Model No.		A	B	C	D	E	F	G	H
CB(X)27UH-018	in.	49-1/4	21-1/4	20-5/8	19-3/4	19	20	24-5/8	24-5/8
CB(X)27UH-024	mm	1251	540	524	502	483	508	625	625
CB(X)27UH-030	in.	51	21-1/4	22-5/8	19-3/4	21	20	26-3/8	24-5/8
CB(X)27UH-036	mm	1295	540	575	502	533	508	670	625
CB(X)27UH-042	in.	58-1/2	21-1/4	24-5/8	19-3/4	23	20	27-7/8	30-5/8
CB(X)27UH-048	mm	1486	540	625	502	584	508	708	778
CB(X)27UH-060	in.	62-1/2	21-1/4	24-5/8	19-3/4	23	20	27-7/8	34-5/8
	mm	1588	540	625	502	584	508	708	879

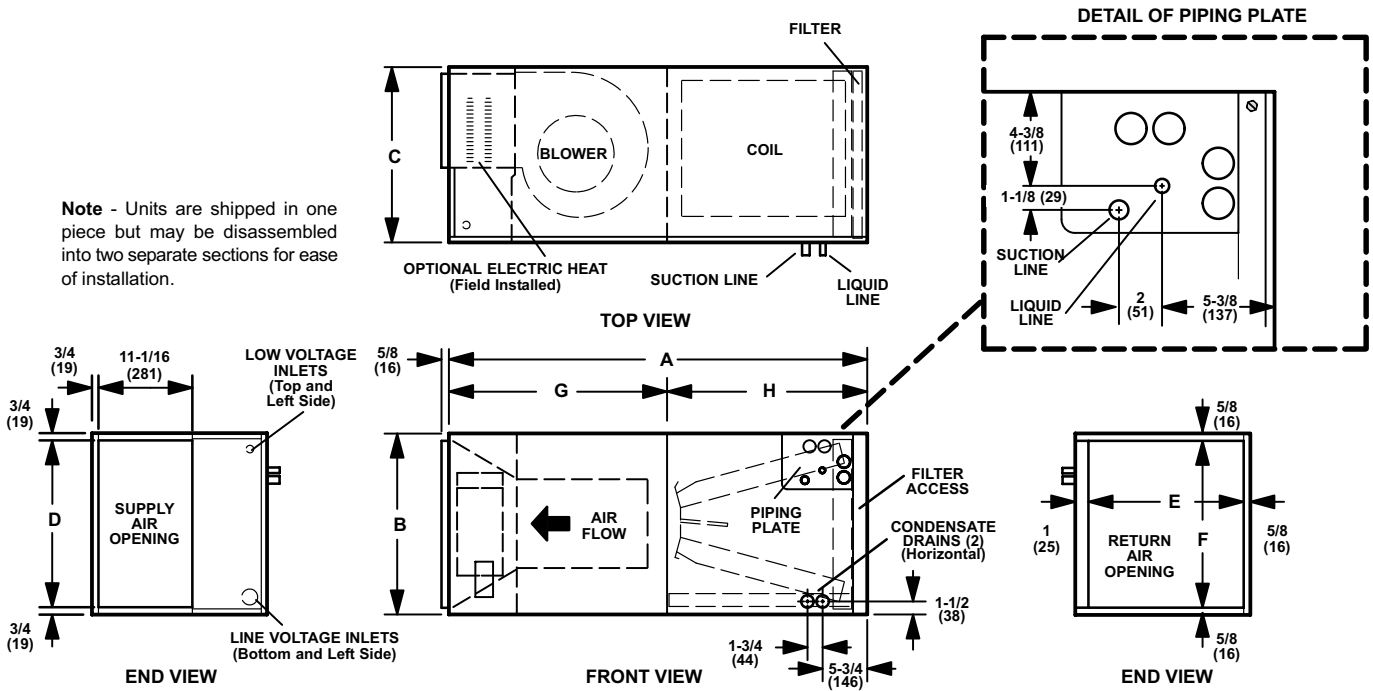


DIMENSIONS - INCHES (MM)

HORIZONTAL POSITION (RIGHT-HAND AIR DISCHARGE)



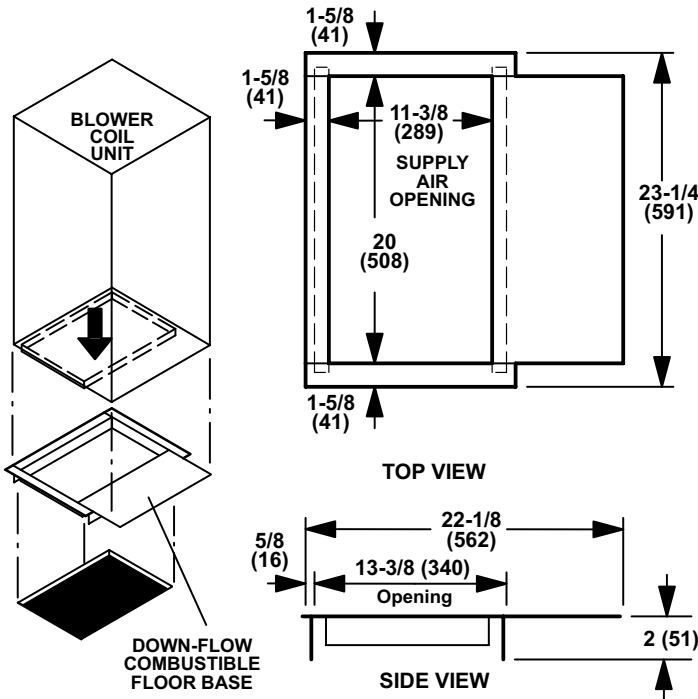
HORIZONTAL POSITION (LEFT-HAND AIR DISCHARGE)



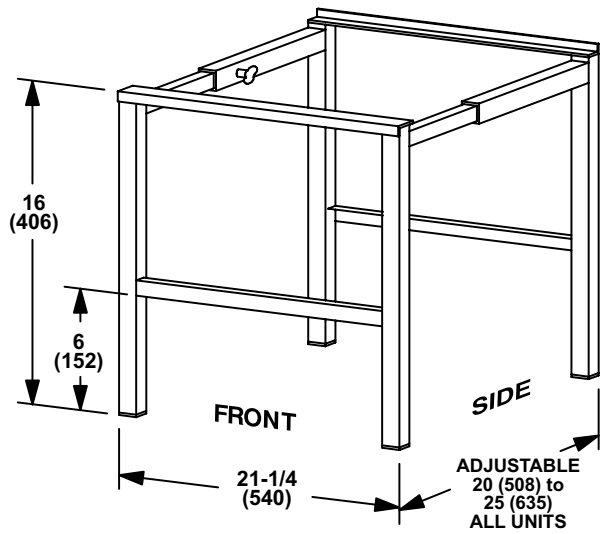
Model No.	A		B		C		D		E		F		G		H	
	inch	mm	inch	mm	inch	mm	inch	mm	inch	mm	inch	mm	inch	mm	inch	mm
CB(X)27UH-018 CB(X)27UH-024	49-1/4	1251	21-1/4	540	20-5/8	524	19-3/4	502	19	483	20	508	24-5/8	625	24-5/8	625
CB(X)27UH-030 CB(X)27UH-036	51	1295	21-1/4	540	22-5/8	575	19-3/4	502	21	533	20	508	26-3/8	670	24-5/8	625
CB(X)27UH-042 CB(X)27UH-048	58-1/2	1486	21-1/4	540	24-5/8	625	19-3/4	502	23	584	20	508	27-7/8	708	30-5/8	778
CB(X)27UH-060	62-1/2	1588	21-1/4	540	24-5/8	625	19-3/4	502	23	584	20	508	27-7/8	708	34-5/8	879

ACCESSORY DIMENSIONS - INCHES (MM)

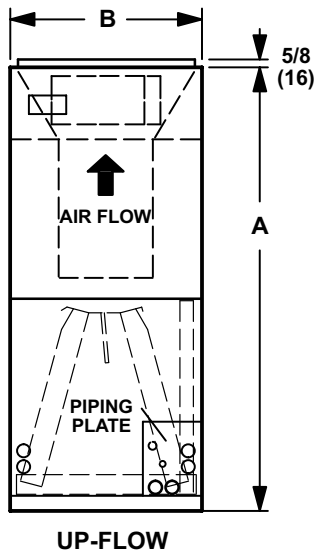
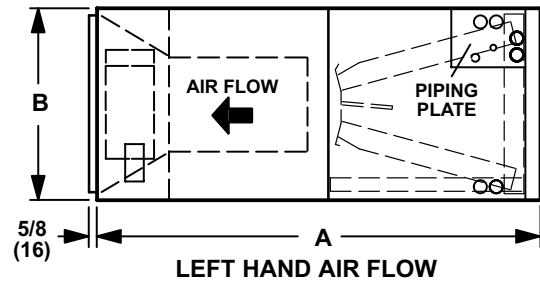
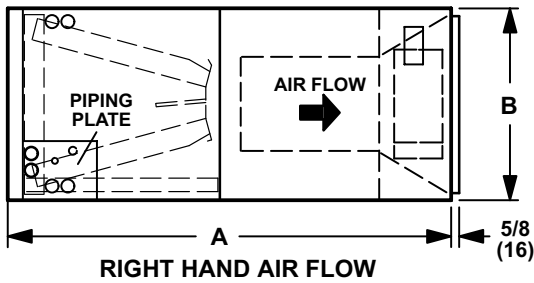
DOWN-FLOW COMBUSTIBLE FLOOR BASE



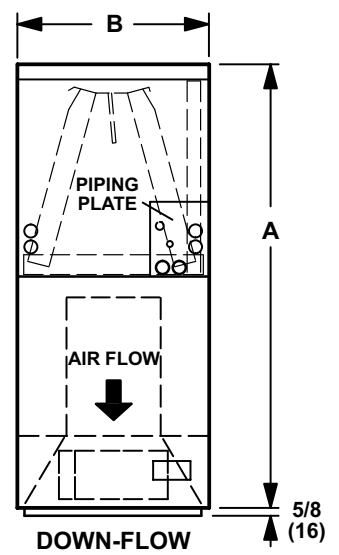
SIDE RETURN UNIT STAND (Up-Flow Only)



AIR FLOW



Model No.	A		B	
	in.	mm	in.	mm
CB(X)27UH-018 CB(X)27UH-024	49-1/4	1251	21-1/4	540
CB(X)27UH-030 CB(X)27UH-036	51	1295	21-1/4	540
CB(X)27UH-042 CB(X)27UH-048	58-1/2	1486	21-1/4	540
CB(X)27UH-060	62-1/2	1588	21-1/4	540



REVISIONS

Section	Description of Change
Electric Heat Data	Revised circuit breaker replacment information.



Visit us at www.lennox.com
For the latest technical information, www.lennoxdagenet.com
Contact us at 1-800-4-LENNOX

NOTE - Due to Lennox' ongoing commitment to quality, Specifications, Ratings and Dimensions subject to change without notice and without incurring liability. Improper installation, adjustment, alteration, service or maintenance can cause property damage or personal injury. Installation and service must be performed by a qualified installer and servicing agency.

©2008 Lennox Industries Inc.