

Installation Instructions

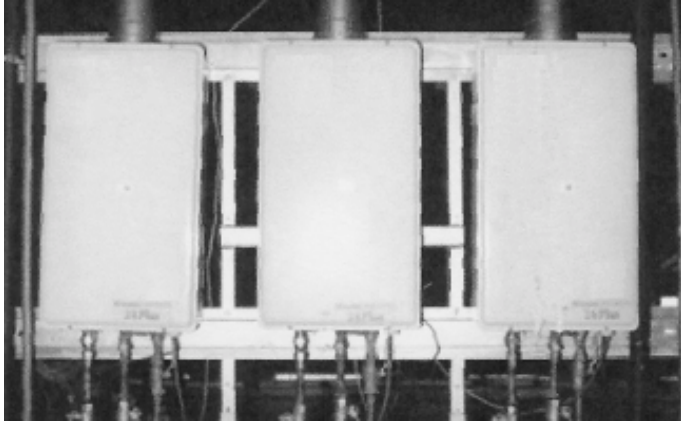
for the

Manifold Electronic Control System

MSA-2M

MSA-2S

Rinnai Continuum V2532



Note:

- A maximum of 5 Continuum units can be manifolded together using 1 MSA-2M controller.
- For use with Rinnai Continuum V2532.

Installation Procedure Unit 1

- 1) Remove (2) screws from sheet metal bracket on top of Master Communication PCB.



- 2) Remove and discard sheet metal bracket leaving Master Communication PCB.



- 3) Remove the screw from the sheet metal reinforcement plate located at the bottom of the water heater cabinet, and then use it to secure the Master Communication PCB to the water heater cabinet.



- 4) Connect the 5 pin connector from Communication Cable A (18 inch cable) to socket No. 1 on Master Communication PCB.



Manifold Electronic Control System Components

MSA-2M - Pack A Manifold Electronic Control System (For wiring Units 1 and 2)

MSA-2M Parts List

Part	Qty
Master Communication PCB	1
Communication Cable A (18 in.)	1
Communication Cable B (15 ft)	1
Cable tie bracket	2
Cable tie	2
Instruction sheet	1



MSA-2S - Pack B Manifold Electronic Control System (For wiring Units 3, 4, and 5)

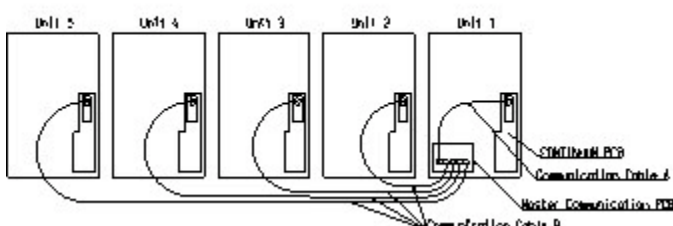
MSA-2S Parts List

Part	Qty
Communication Cable B (15 ft)	1
Cable tie bracket	1
Cable tie	1

Note: 1 MSA-2S is required for each water heater -- Units 3, 4, & 5



TYPICAL INSTALLATION



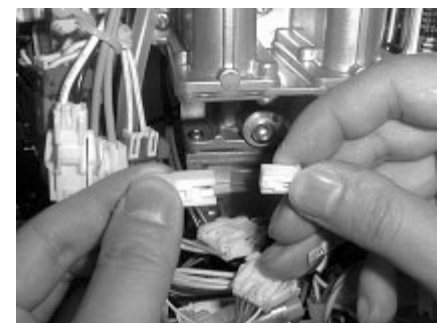
Warning: Disconnect all Continuum water heaters from their power source before carrying out the following installation procedures.

Note: The front cover panels of each Continuum water heater must be removed prior to completing the following installation procedures.

- 5) Connect the 4 pin connector from Communication Cable A to the 4 pin socket located at the top of the water heater's PCB.



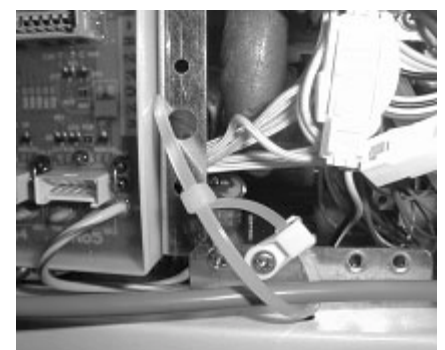
- 6) Remove the protective cap from the 2 pin connector marked "MS" (located in the middle of the Continuum water heater wiring harness).



- 7) Connect the 2 pin connector from Communication Cable A into the 2 pin connector marked "MS".



- 8) Attach the cable tie bracket to the bottom of the water heater cabinet using the existing screw. Loosely secure the cable tie through the bracket and around the communication cable. DO NOT TIGHTEN THE CABLE TIE AT THIS TIME -- the communication cables from the other water heaters must be secured by this cable tie.

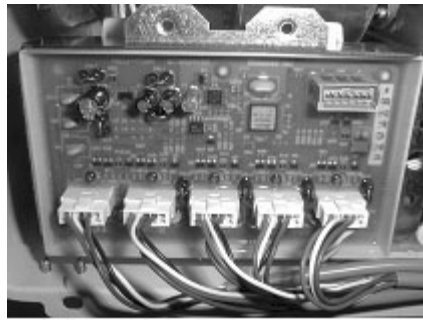


Installation Procedure Units 2, 3, 4, and 5

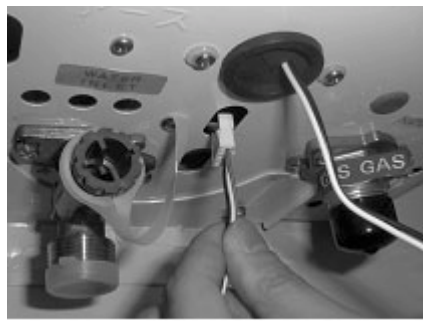
- 9) Run the 5 pin connector of Communication Cable B (15 ft. cable) up through the elongated slot in the bottom of Unit 1's cabinet.



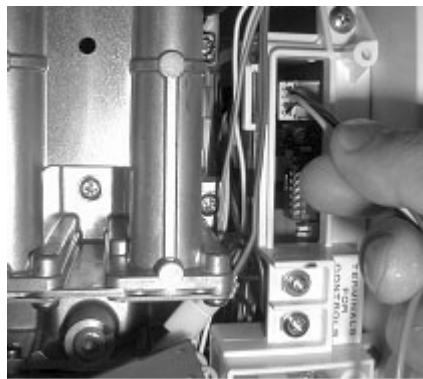
- 10) Route the 5 pin connector of Communication Cable B through the cable tie, installed in step 8, and plug it into socket 2 on Master Communication PCB.



- 11) Run the other end of Communication Cable B (end with 4 pin connector and 2 pin connector) up through the elongated slot in the bottom of Unit 2's cabinet.

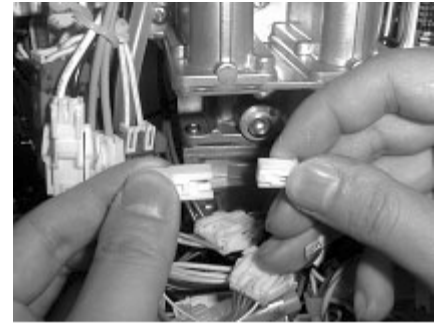


- 12) Connect the 4 pin connector from Communication Cable B to the 4 pin socket located at the top of the water heater Unit 2's PCB.

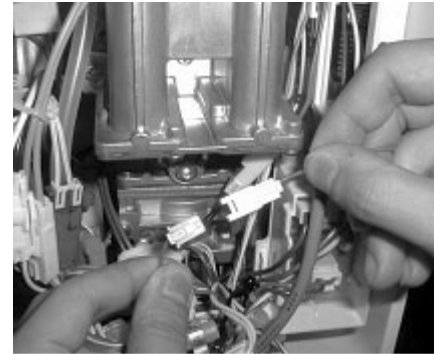


5 of 6

- 13) Remove the protective cap from the 2 pin connector marked "MS" (located in the middle of the Continuum water heater Unit 2's wiring harness).



- 14) Connect the 2 pin connector from Communication Cable B into the 2 pin connector marked "MS".



- 15) Attach the cable tie bracket to the bottom of the water heater cabinet using the existing screw. Pull all of the excess cable up into Unit 2's cabinet, and then secure it tightly to the bracket using the cable tie.



- 16) Repeat steps 9 to 15 for Units 3, 4, and 5, as applicable.

Note: Communication Cable B for Unit 3 plugs into socket 3, Unit 4 plugs into socket 4, and Unit 5 plugs into socket 5.

- 17) After making all of the connections to the Master Communication PCB, securely tighten the cable tie in Unit 1.



- 18) Place the front cover panels back on each of the Continuum water heaters using (4) screws.

- 19) Restore power to the Continuum water heaters.

6 of 6