

JOB NAME _____ LOCATION _____
PURCHASER _____ ORDER NO. _____
ENGINEER _____
SUBMITTED TO _____ FOR: Reference Approval Construction
SUBMITTED BY _____ DATE _____

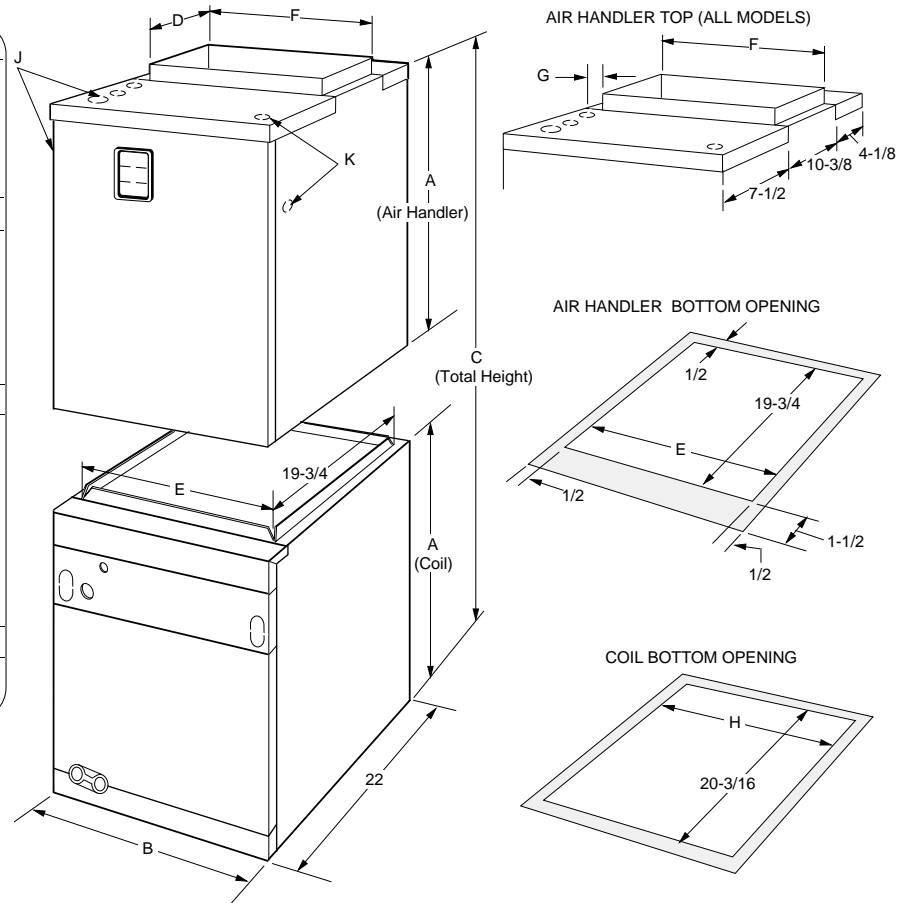
UNIT DESIGNATION: Schedule No. _____ MODEL NO. _____

PRODUCT DATA

COOLING PERFORMANCE	
Total Capacity*	_____ MBH
Sensible Capacity*	_____ MBH
Temperature of air entering	
Indoor Coil	_____ / _____ °F DB/WB
SUPPLY AIR BLOWER PERFORMANCE	
Total Supply Air	_____ CFM
Total Resistance External to Unit	_____ IWG
Blower Speed Tap	_____ RPM
Motor Rating	_____ HP
ELECTRICAL DATA	
Power Supply	_____ / _____ / _____
Total Unit Ampacity	_____ AMPS
Minimum Wire Size (Copper conductors)	_____ AWG
Maximum Overcurrent Device	_____ AMPS
<input type="checkbox"/> Fuses (Dual Element)	
<input type="checkbox"/> Circuit Breaker (HACR)	
UNIT WEIGHT	
Total Operating Weight (Including field-installed accessories)	_____ LBS.

*Shown in Outdoor Unit Technical Guide.

DIMENSIONS (in.) - Air Handler / Multi-Position Coils



MATCHING OUTDOOR UNIT

Model No. _____ ()
Submittal Form No. _____ ()

MODEL	DIMENSIONS								WIRING K.O.'S *		REFRIGERANT CONNECTIONS			
	A Height	B Width	C Total Height	D	E	F	G	H	J Power	K Control	LINE SIZE			
N1VSB12**		17-1/2	47-1/4 or 52-1/4 Depending on combination.	10-3/8	16-1/2	16-1/2	1/2	—	7/8 (1/2), 1-3/8(1)	7/8 (1/2)	Liquid	Vapor		
N1VSC16**	24-1/4	21			20	20	1/2	—	7/8 (1/2), 1-3/8(1), 1-23/32(1-1/4)		—	—		
N1VSD20**		24-1/2			23-1/2	22-1/2	1	—	7/8 (1/2), 1-3/8(1), 1-31/32 (1-1/2)		—	—		
G2FD024S17	23	17-1/2		19-7/8	20-3/16	16-3/8	—	16-1/2	—	—	—	3/8	5/8	
G2FD030S17	23	17-1/2				16-3/8	—	16-1/2	—	—	—		—	5/8
G2FD036S17	28	17-1/2				16-3/8	—	16-1/2	—	—	—		—	3/4
G2FD036S21	23	21				19-7/8	—	20	—	—	—		—	3/4
G2FD046S17	28	17-1/2				16-3/8	—	16-1/2	—	—	—		—	3/4
G2FD042S21	23	21				19-7/8	—	20	—	—	—		—	3/4
G2FD048S21	28	21				19-7/8	—	20	—	—	—		—	7/8
G2FD048S24	28	24-1/2				23-3/8	—	23-1/2	—	—	—		—	7/8
G2FD060S24	28	24-1/2				23-3/8	—	23-1/2	—	—	—		—	7/8

* Parenthesis indicate conduit size.
** May be either 208/230-1-60 or 208/230-3-60.

Refer to Form 535.03-TG1Y for detailed specifications on the unit and its accessories. Subject to change without notice. Printed in the U. S. A.

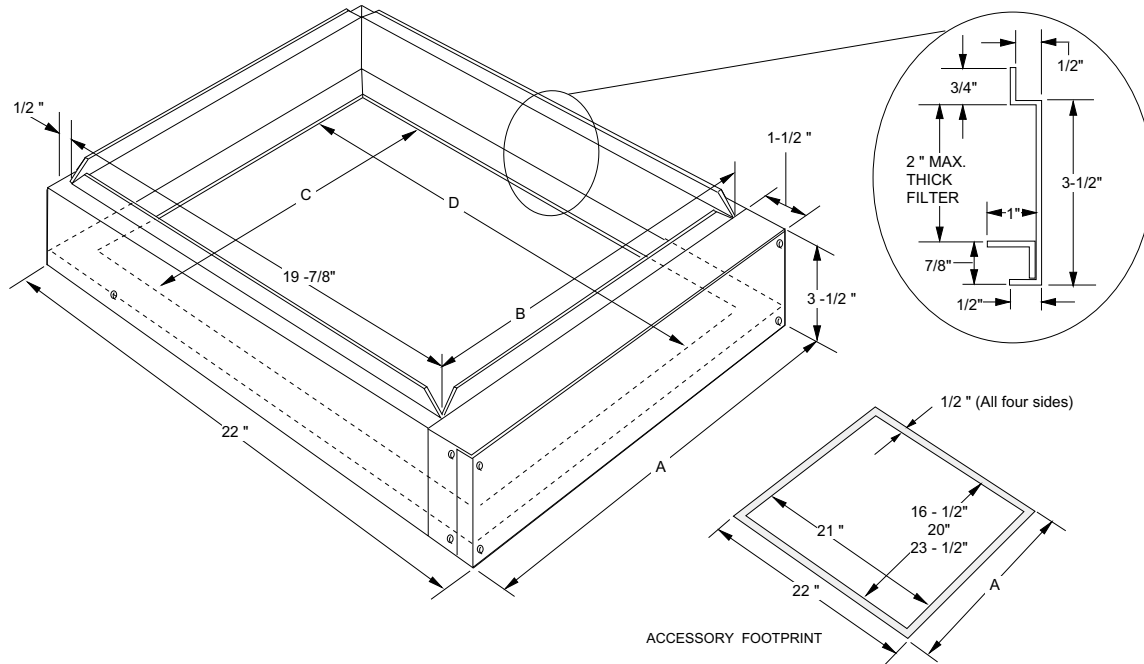
**SPLIT-SYSTEM
VARIABLE SPEED AIR HANDLER / COIL
N1VS / G2FD**

FORM 535.03-SD1Y (298)

Supersedes: 535.03-SD1Y (1097)



DIMENSIONS (in.) - Filter Rack Accessory for downflow applications

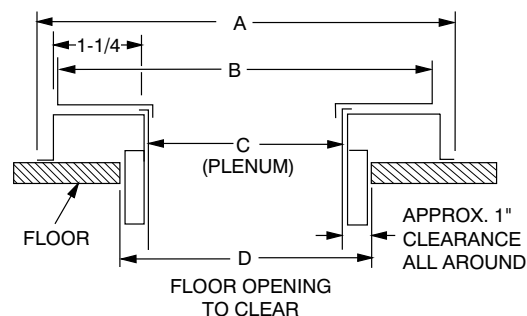
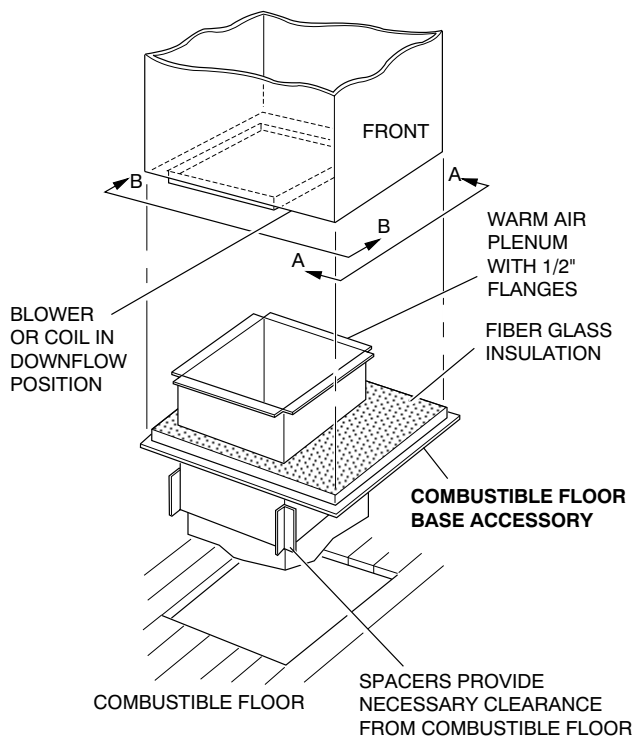


All dimensions are in inches. They are subject to change without notice. Certified dimensions will be provided upon request.

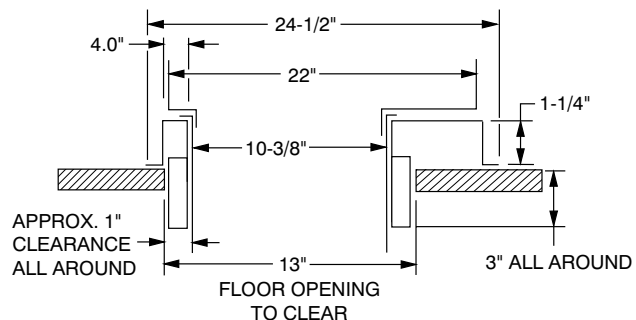
Filter Rack Model	Used With	Rack Dimensions Inches				Filter Dimensions Inches		
		A	B	C	D	Width	Length	Thickness
1FR0617	N-AHB08, N-AHB12, N-VSB12	17-1/2	16-3/8	15-1/2	21	17-1/2	22	1
1FR0621	N-AHC16, N-VSC16	21	19-7/8	19	21	21	22	1
1FR0624	N-AHD14, N-AHD20, N-VSD20	24-1/2	23-3/8	22-1/2	21	24-1/2	22	1

DIMENSIONS (in.) - Combustible Floor Base Accessory

NOTE: The combustible floor base accessory is required whenever an air handler unit with electric heat accessory is installed in the downflow operating position.



FRONT CROSS SECTION VIEW (A-A)



SIDE CROSS SECTION VIEW (B-B)

FLOOR BASE	USED WITH	A	B	C	D
1FB0617	B08, B12	21-1/2	17-1/2	16-1/2	19
1FB0621	C16	25	21	20	22-1/2
1FB0624	D20	27-1/2	24-1/2	22-1/2	25

FEATURES

AIR HANDLERS

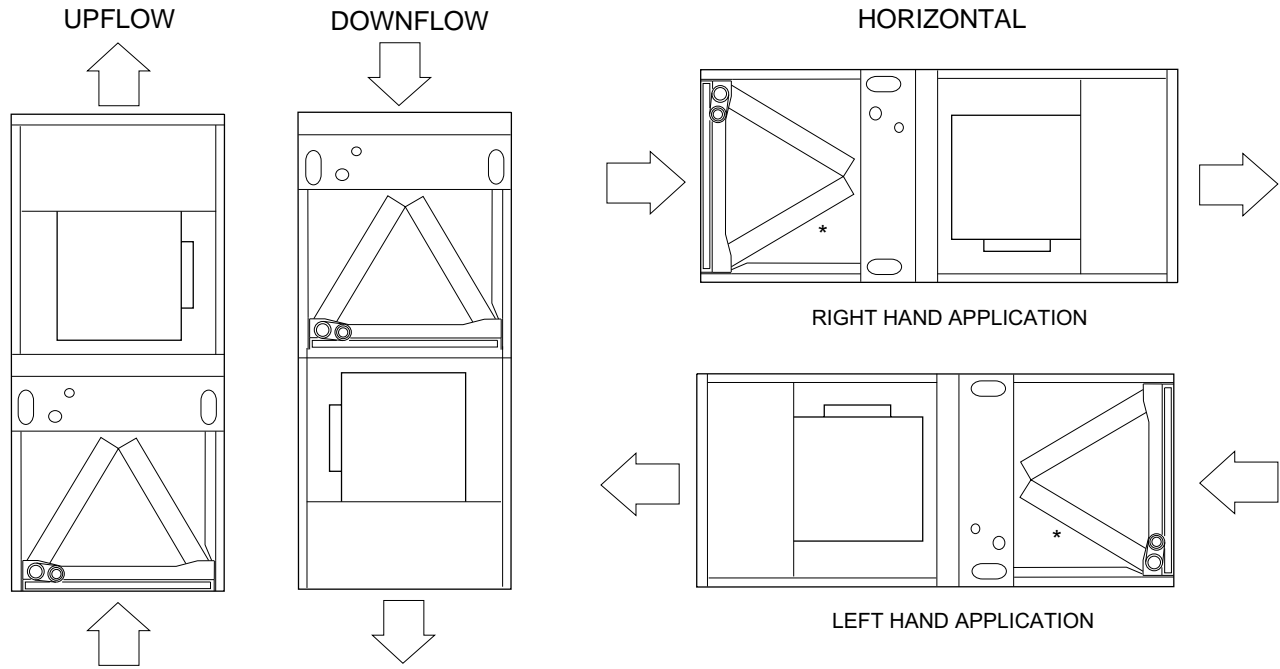
- Electronically Commutated Motor
- Upflow, Downflow or Horizontal Applications
- Approved for "0" inch clearance without electric heat
- Approved for "1" inch clearance with electric heat installed
- One-half inch insulation (R=4.2) on all models

COILS

- Rifled copper tubes and aluminum fins
- Sweat connect refrigerant connections
- Upflow, Downflow or Horizontal Applications
- Yorkmate™ Refrigerant control device
- One-half inch insulation on GFD models

POSSIBLE COMPONENT APPLICATIONS

AIR HANDLER / COIL APPLICATIONS



FIELD INSTALLED ACCESSORIES

- Electric Heater (# _____)
- Capacity (@ _____ Volts) _____ MBH
- Power Input Requirement (Less Blower Motor) _____ KW
- Filter Rack (# _____)
- Combustible Floor Base (# _____)
- Interconnecting Lines
- Length _____ ft.
- Thermal Expansion Valve Kit (# _____)

NOTES: _____

NOTES: _____



Heating and Air Conditioning

P.O. Box 1592, York, Pennsylvania USA 17405-1592
Subject to change without notice. Printed in U.S.A
Copyright © by York International Corporation 1998. All Rights Reserved.

Code: EBY, EGY

535.03-SD1Y (298)