



www.Source1Parts.com

# YMA SERIES - 12 SEER HEAT PUMP - OUTDOOR UNIT

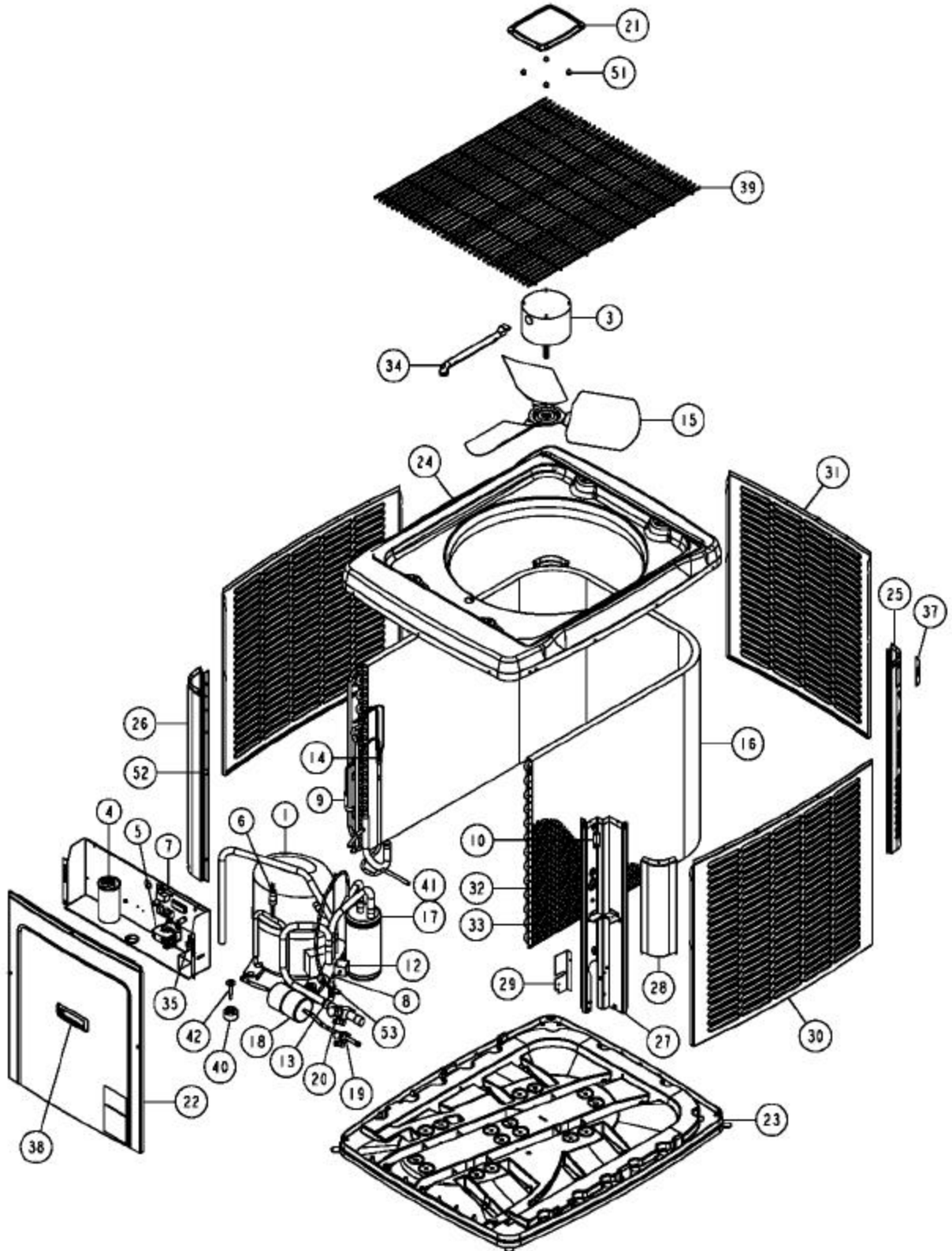
(R-22)

HVAC SERVICE PARTS

Supersedes:035-19684-001 Rev. B (1104)

035-19684-001 Rev. C (0105)

1 of 4



ITEM	DESCRIPTION	YMA02411A	YMA03011A	YMA03611A
1	Compressor	015-03549-001	015-03636-001	015-03656-001
2*	Compressor Harness	025-31884-000	025-31884-000	025-31884-000
3	Motor, Direct Drive Fan	024-26029-000	024-27596-000	024-27596-000
4	Capacitor, Run (30/5MFD) [RC]	024-24778-000	---	---
	Capacitor, Run (30/5MFD 440 V) [RC]	---	024-25888-000	---
	Capacitor, Run (40/5MFD) [RC]	---	---	024-25893-000
5	Contact, Electrical (30 AMP) [M]	024-34579-000	024-34579-000	024-34579-000
6	Control Pressure (High)	025-33305-068	025-33305-068	025-33305-068
7	Control Defrost	031-01975-102	031-01975-102	031-01975-102
8	Reversing Valve	025-38945-000	025-38945-000	025-38945-000
9	Sensor, Temperature	031-01276-000	031-01276-000	031-01276-000
10	Ambient Sensor	<b>025-32701-000</b>	<b>025-32701-000</b>	<b>025-32701-000</b>
11*	TXV	---	---	025-38907-000
12	Solenoid Coil (Rev. Valve)	025-30215-000	---	---
13	Valve Body	022-08982-000	022-08982-000	022-08982-000
14	Distributor -.042 Orifice	022-08948-342	---	---
	Distributor -.045 Orifice	---	022-08948-445	---
	Distributor Assembly	---	---	025-33424-234
15	Blade, Fan	026-39474-000	026-34593-000	026-34593-000
16	Coil, Condenser	373-26995-205	373-26995-206	373-26995-207
17	Accumulator Tank	026-31681-001	026-31681-001	026-25573-002
18	Filter/Drier	026-25512-000	026-25512-000	026-25512-000
19	Valve Base, Liquid (3/8")	022-09064-375	022-09064-375	022-09064-375
20	Valve Base, Suction (3/4")	022-09064-750	022-09064-750	---
	Valve Base, Suction (7/8")	---	---	022-09064-875
21	Top Cap Assy	028-14888-006	028-14888-006	028-14888-006
22	Access Panel	073-26917-206	073-26917-406	073-26917-706
23	Pan, Base	028-14885-000	028-14885-000	028-14885-000
24	Panel, Top	073-26917-103	073-26917-103	073-26917-103
25	Corner Post, Front (2 Req'd)	073-26917-209	073-26917-409	073-26917-709
26	Corner Post, Access	073-26917-210	073-26917-410	073-26917-710
27	Corner Post, Valve	073-26917-212	073-26917-412	073-26917-712
28	Corner Cover, Access	073-26917-114	073-26917-114	073-26917-114
29	Bracket, Corner Post	073-26917-116	073-26917-116	073-26917-116
30	Coil Guard, Side Slots (2 Req'd)	073-26917-204	073-26917-404	073-26917-704
31	Coil Guard, Front Slots	073-26917-205	073-26917-405	073-26917-705
32	Guard, Plastic Wire Mesh Coil	028-14879-026	028-14879-030	028-14879-036
33	Fastener, Push-In (6 Req'd)	021-18381-000	021-18381-000	021-18381-000
34	Wireway	028-13216-001	028-13216-001	028-13216-001
35	Lug, Electrical	025-21798-000	025-21798-000	025-21798-000
36*	Relief, Strain	025-11165-000	025-11165-000	025-11165-000
37	Corner Bezel (1 Req'd)	035-19719-000	035-19719-000	035-19719-000
38	Handle-Access	028-14886-000	028-14886-000	028-14886-000
39	Guard, Fan	026-39438-000	026-39438-000	026-39438-000
40	Grommet, Isolator (Comp) (Pkg. of 4)	028-10581-000	028-10505-000	028-10505-000
41	Grommet, Isolator (Accumulator) (2 Req'd)	1212-006	1212-006	1212-006
42	Bolt, Compressor (4 Req'd)	021-18391-000	021-18391-000	021-18391-000
43*	Screw, Black #10 x 3/8"	021-18396-000	021-18396-000	021-18396-000
44*	Screw, Black #10 x 3/4"	021-18397-000	021-18397-000	021-18397-000
45*	Screw, #8 x 1-1/2" Torx Head	021-18398-000	021-18398-000	021-18398-000
46*	Diagram, Wiring	035-19963-001	035-19963-001	035-19963-001
47*	Wiring Harness, Control (12 Pin Plug)	373-26955-005	373-26955-005	373-26955-005
48*	Wiring Harness, Fan (6 Pin Plug)	373-20055-004	373-20055-004	373-20055-004
49*	Wiring Harness, Low Voltage	373-26955-004	373-26955-004	373-26955-004
50*	Wiring Harness, Solenoid	1456-9771	1456-9771	1456-9771
51	Kit, Motor Mounting (Acorn Nuts)	363-90117-700	363-90117-700	363-90117-700
52	Grommet, Plastic (Spacer, 2 Req'd)	028-14880-000	028-14880-000	028-14880-000
53	Knurled Valve Cap, 1/4" OD	023-10745-000	023-10745-000	023-10745-000
54*	Muffler	---	026-39476-000	026-39476-000
55*	Blanket, Compressor	010-06739-000	010-06739-000	010-06739-000
56*	Orifice	029-19387-015	029-19387-004	029-19387-006

**NOTE:** \*Not ShownNew replacement parts shown in **bold** face type at the first printing of parts list dated 1/05.

Major components and suggested stocking items are shown with shaded item number.

"←" Across from row indicates a change in that row.

--- Not applicable to specified model.

ITEM	DESCRIPTION	YMA04211A	YMA04811A	YMA06011A
1	Compressor	015-03657-004	015-03658-004	015-03679-004
2*	Compressor Harness	025-31884-000	025-31884-000	025-31884-000
3	Motor, Direct Drive Fan	024-27596-000	024-27596-000	024-27596-000
4	Capacitor, Run (60/5MFD) [RC]	024-25033-000	024-25033-000	---
	Capacitor, Run (70/5MFD 370V) [RC]	---	---	024-27616-000
5	Contactora, Electrical (40 AMP) [M]	024-25837-000	024-25837-000	024-25837-000
6	Control Pressure (High)	025-33305-068	025-33305-068	025-33305-068
7	Control Defrost	031-01975-102	031-01975-102	031-01975-102
8	Reversing Valve	025-38946-000	025-38947-000	025-38947-000
9	Sensor, Temperature	031-01276-000	031-01276-000	031-01276-000
10	Ambient Sensor	<b>025-32701-000</b>	<b>025-32701-000</b>	<b>025-32701-000</b>
11*	TXV	025-38906-000	025-38906-000	025-38906-000
12	Solenoid Coil (Rev. Valve)	025-30215-000	025-30215-000	025-30215-000
13	Valve Body	022-08982-000	022-08982-000	022-08982-000
14	Distributor Assembly	025-33424-235	025-33424-236	025-33424-238
15	Blade, Fan	026-34094-000	026-34094-000	026-34094-000
16	Coil, Condenser	373-26995-208	373-26995-210	373-26995-211
17	Accumulator Tank	026-25573-002	026-25573-007	026-25573-007
18	Filter/Drier	026-25512-000	026-25512-000	026-25512-000
19	Valve Base, Liquid (3/8")	022-09064-375	022-09064-375	022-09064-375
20	Valve Base, Suction (7/8")	022-09064-875	022-09064-875	022-09064-875
21	Top Cap Assy	028-14888-006	028-14888-006	028-14888-006
22	Access Panel	073-26917-706	073-26917-706	073-26917-706
23	Pan, Base	028-14885-000	028-14885-000	028-14885-000
24	Panel, Top	073-26917-103	073-26917-103	073-26917-103
25	Corner Post, Front (2 Req'd)	073-26917-709	073-26917-709	073-26917-709
26	Corner Post, Access	073-26917-710	073-26917-710	073-26917-710
27	Corner Post, Valve	073-26917-712	073-26917-712	073-26917-712
28	Corner Cover, Access	073-26917-114	073-26917-114	073-26917-114
29	Bracket, Corner Post	073-26917-116	073-26917-116	073-26917-116
30	Coil Guard, Side Slots (2 Req'd)	073-26917-704	073-26917-704	073-26917-704
31	Coil Guard, Front Slots	073-26917-705	073-26917-705	073-26917-705
32	Guard, Plastic Wire Mesh Coil	028-14879-036	028-14879-036	028-14879-036
33	Fastener, Push-In (6 Req'd)	021-18381-000	021-18381-000	021-18381-000
34	Wireway	028-13216-001	028-13216-001	028-13216-001
35	Lug, Electrical	025-21798-000	025-21798-000	025-21798-000
36*	Relief, Strain	025-11165-000	025-11165-000	025-11165-000
37	Corner Bezel (1 Req'd)	035-19719-000	035-19719-000	035-19719-000
38	Handle, Access	028-14886-000	028-14886-000	028-14886-000
39	Guard, Fan	026-39438-000	026-39438-000	026-39438-000
40	Grommet, Isolator (Comp) (Pkg. of 4)	028-10581-000	028-10505-000	028-10505-000
41	Grommet, Isolator (Accumulator) (2 Req'd)	1212-006	1212-006	1212-006
42	Bolt, Compressor (4 Req'd)	021-18391-000	021-18391-000	021-18391-000
43*	Screw, Black #10 x 3/8"	021-18396-000	021-18396-000	021-18396-000
44*	Screw, Black #10 x 3/4"	021-18397-000	021-18397-000	021-18397-000
45*	Screw, #8 x 1-1/2" Torx Head	021-18398-000	021-18398-000	021-18398-000
46*	Diagram, Wiring	035-19963-001	035-19963-001	035-19963-001
47*	Wiring Harness, Control (12 Pin Plug)	373-26955-005	373-26955-005	373-26955-005
48*	Wiring Harness, Fan (6 Pin Plug)	373-20055-004	373-20055-004	373-20055-004
49*	Wiring Harness, Low Voltage	373-26955-004	373-26955-004	373-26955-004
50*	Wiring Harness, Solenoid	1456-9771	1456-9771	1456-9771
51	Kit, Motor Mounting (Acorn Nuts)	363-90117-700	363-90117-700	363-90117-700
52	Grommet, Plastic (Spacer, 2 Req'd)	028-14880-000	028-14880-000	028-14880-000
53	Knurled Valve Cap, 1/4" OD	023-10745-000	023-10745-000	023-10745-000
54*	Muffler	---	---	---
55*	Blanket, Compressor	010-06754-000	010-06741-000	010-06741-000
56*	Orifice	029-19387-007	---	029-19387-008

**NOTE:** \*Not ShownNew replacement parts shown in **bold** face type at the first printing of parts list dated 1/05.

Major components and suggested stocking items are shown with shaded item number.

"←" Across from row indicates a change in that row.

--- Not applicable to specified model.

<b>Non-Electrical Accessories</b>		
<b>Part No.</b>	<b>Description</b>	<b>Used With</b>
1TV0701 1TV0702 1TV0703	TXV Kits	024, 030 036, 042 048, 060
526-35389-000 526-35390-000 526-35391-000	3" Risers (Pump Ups) 6" Risers (Pump Ups) 12" Risers (Pump Ups)	All Models (6 per unit)

<b>Electrical Accessories</b>		
<b>Part No.</b>	<b>Description</b>	<b>Used With</b>
024-31994-000 024-31995-000	Kick Start	024, 030, 036 042, 048, 060
2AC02700701	Fossil Fuel Kit	All Models
2TD06700124	Outdoor Thermostat	All Models
2HU16700124	Dehumidistat	All Models

**TO ORDER AUTHORIZED FACTORY REPLACEMENT PARTS** - Contact your Source1 HVAC Parts Distributor or visit our website at [www.Source1Parts.com](http://www.Source1Parts.com) for a Distributor and Dealer listing.