

Split System Submittal Data



Building Life.

System: 26KHS72R Indoor/Outdoor: KHS2672R/CH2672R
Wall Mounted Heat Pump

Job Name: _____
 Location: _____
 Engineer: _____
 Submitted to: _____
 Submitted by: _____
 Reference: _____

Approval: _____
 Date: _____
 Construction: _____
 Unit #: _____
 Drawing #: _____



General Data (at 230V)

Power	V/PH/Hz	230/208/1/60
Circuit Ampacity	(A)	15-30 Indoor-Outdoor
Fuse Size, Max.	(A)	15-30 Indoor-Outdoor

Compressor		DC Rotary Inverter
No. used		1
R.L. Amps - L.R.	(A)	12.9-17.5

Outdoor Unit

Fan type		Propeller
Dia. (in.) - No. Speeds		18-7/64-1
Type Drive - No. Speeds		DC Motor
No. Poles	(RPM)	8 - 800
No. Motors	(W)	1 - 90
CFM	(High)	1765
F.L. Amps	(A)	13.8

Coil Type		Aluminum Fin & Copper Pipe
Fin Type - Pipe Type		Slit Plate - Inner Riffled
Rows - F.P.I.		1 - 15.9
Face Area	(sq.ft.)	7.26
Tube Size	(in.)	3/8"

Indoor Unit

Fan type		Cross Flow
Dia. & Length (in.) - No. Speeds		3-15/16 L33-15/64 - 1
No. Speeds		3 & Auto
No. Poles	(RPM, High)	4 - 1224
No. Motors	(W)	1 - 29
CFM	(Hi/Med/Lo)	559/475/390
Indoor Sound Rating	(Hi) (dB-A)	48
F.L. Amps	(A)	0.31

Coil Type		Aluminum Plate Fin & Copper Tube
Fin Type - Pipe Type		Slit Plate - Inner Riffled
Rows - F.P.I.		2 - 24.1
Face Area	(sq.ft.)	2.57
Tube Size	(in.)	9/32"
Drain Connection Size	(in.)	1-1/4"

Refrigerant

		R410A
Lbs. - R410a (outdoor unit)		4.19
Control		Electric Expansion Valve
Connection		Flare
Line Length, Max (ft.)		165
Lift Difference, Max (ft.)		50 (outdoor lower), 100 (outdoor higher)
Line Size	(in. O.D. Discharge)	3/8"
Line Size	(in. O.D. Suction)	5/8"

Dimensions

	(in.)		H x W x D
Indoor Unit	(Uncrated)	12-63/64 x 44-7/8 x 8-31/32	
	(Crated)	15-11/32 x 47-27/32 x 11-17/32	
Outdoor Unit	(Uncrated)	30-23/32 x 37 x 13-3/8	
	(Crated)	34-31/32 x 39-31/32 x 16-3/32	

Weight

		Indoor	Outdoor
Net	(lbs.)	40	128
Shipping	(lbs.)	44	148
Shipping Volume	(cu.ft.)	4.9	13.0

Performance Data @ ARI Standard Conditions (230/208V)

Cooling

Total Capacity	(BTU/H)	25,200 (9,500-25,200)
Sensible Capacity	(BTU/H)	14,790
Latent Capacity	(BTU/H)	10,410
SEER		14.9
Dehumidification	(Pints/H)	8.1
Amps	(A)	15.3/16.9
Power Inputs	(W)	2,840/2,840
Outdoor Sound Rating	(dB-A)	49

Heating

Total Capacity	(BTU/H)	29,200 (8,000-29,200)
HSPF		10.2

➔➔➔ Dimensions

Heating

Amps	(A)	14/15.5
Max. Amps	(A)	14/15.5
Power Inputs	(W)	2,620/2,260
Back-up Strip Heater	(KW)	0.00/0.00
Outdoor Sounds Rating	(dB-A)	49

Options

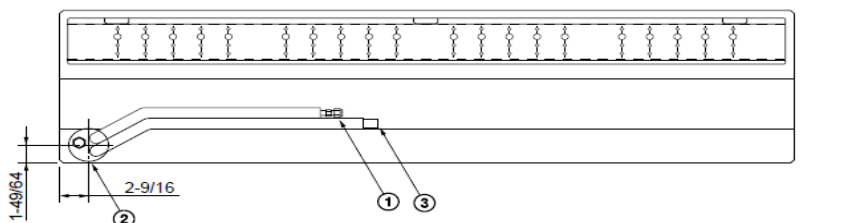
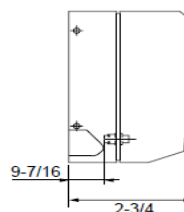
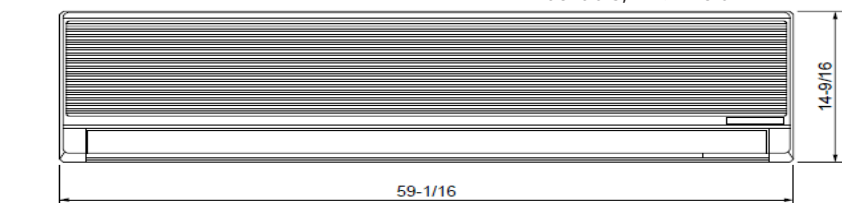
Refrigerant Line Set	Available
Fresh Air Intake	N/A
Air duct Extension	N/A
Indoor Frame Extension	N/A
Condensate Drain Pump	Available
Non-Removeable Remo-con Bracket	Available

Features

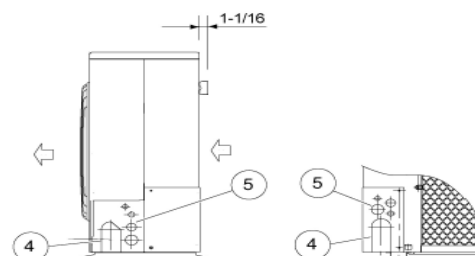
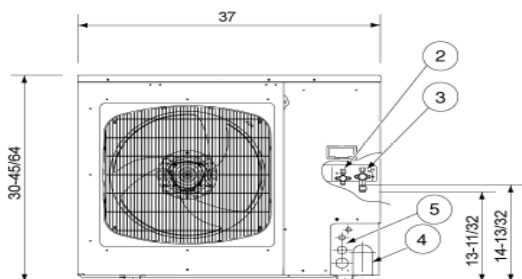
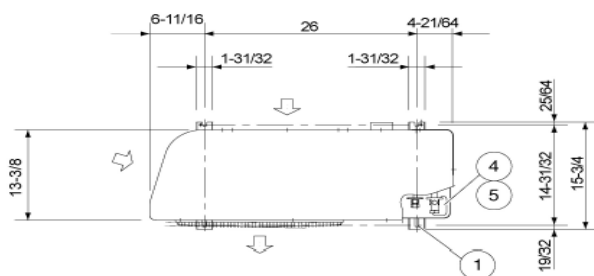
Controls	Microprocessor
Remote Controller	LCD Wireless Type, Temp. Sensor Built In
Temperature Control	IC Thermostat
Timer	24 Hr. Program
Night Setback	Built-In
Air Louver	(Horizontal) Manual
	(Vertical) Automatic
Power Failure Automatic Restart	Built-In
Heating/Cooling Automatic Changeover	Built-In
Self-Diagnosis	Built-In
Air Filter	Washable, Anti-Mold

Operating Range

		Indoor Air Intake Temp.	Outdoor Air Intake Temp.
Cooling	Maximum	95F DB/71F WB	115F DB
	Minimum	67F DB/57F WB	0F DB
Heating	Maximum	80F DB/67F WB	75F DB/65F WB
	Minimum	-DB/-WB	5F DB



- ① Refrigerant liquid line (3/8") Flare connection
- ② Refrigerant gas line (5/8") Flare connection
- ③ Drain hose OD 1-3/128



Dimension: inch

SANYO

Sanyo Commercial Solutions
A Division of SANYO North America
1300 Michael Drive
Wood Dale, IL 60191 USA
www.sanyohvac.com

- ① Hole for anchor bolt (4-R6.5) / Anchor bolt: M10
- ② Refrigerant tube joint (liquid line tube) • Flare connection 3/8 in (9.52 mm)
- ③ Refrigerant tube joint (gas line tube) • Flare connection 5/8 in (15.88 mm)
- ④ Refrigerant tubing inlet (knock-out hole)
- ⑤ Power supply inlet (knock-out hole $\phi 38, \phi 29, \phi 19, \phi 16$ mm)

