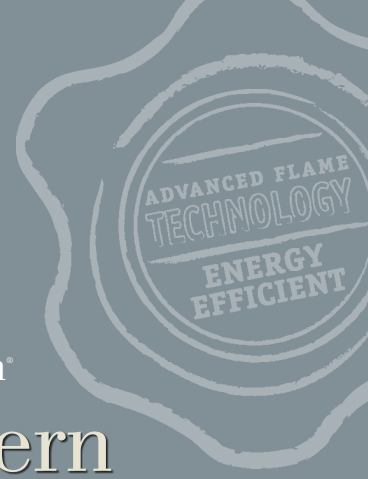


FIRE & LIGHT



Napoleon®

# Modern Collection

Direct Vent Gas Fireplaces





Tureen™ shown with exclusive stainless steel surround and hearth and two 3' x 6' Napoleon® waterfalls on each side

## The Comfort You Deserve

With over 30 years of passionate dedication, Napoleon®, an industry leader for innovative designs, has earned a worldwide reputation for providing families with fireplaces of uncompromising quality, state-of-the-art technology and designer features that create a proud statement in any home.

As the largest family owned hearth and grill manufacturer in North America, Napoleon® holds strong family values that carry through in every aspect of the organization. Since 1976, Napoleon® has grown from a small manufacturing operation to a large private corporation, instilling the same strong values they started with. Napoleon® products are found in homes around the globe... becoming the preferred choice worldwide.



# WHY NAPOLEON®?

## Making your life easier...

Napoleon's Modern Collection is designed to provide you absolute comfort and control at the touch of your fingertips. It's that easy. When you install a Napoleon® direct vent gas fireplace, you can rest assured that you will enjoy a lifetime of instant ambiance with reliable performance year after year.

## An investment you can count on...

Your new Napoleon® fireplace adds value to your home while at the same time giving you uncompromising comfort and a reliable heating source. Aside from kitchen and bathroom renovations, fireplaces add the most return on your home investment. Nothing to lose and everything to gain.

## Create your personal design statement...

Surround yourself with a home environment that makes you feel good, relaxed and proud to reflect your decorating style. Thousands of designer options are available to create the exact statement you have been looking for.

## Beautiful fires, best flame in the industry...

With advanced burner technology and innovative design, Napoleon's Yellow Dancing Flame® patterns are so realistic it's hard to tell the difference from a real wood burning fire.

## Authorized dealer support network...

With over 3,000 reputable authorized dealers across North America and Europe, Napoleon® provides professional and consistent training and technical support to ensure your fireplace is installed by a certified, reputable installation technician.

## Outstanding Reliable Warranty...

Each and every Napoleon® fireplace is designed and manufactured to strict quality testing standards and backed by the President's Limited Lifetime Warranty, guaranteed to give you the peace of mind you deserve.

(Registered under the world recognized ISO 9001-2000)



Wolf Steel Manufacturing



Napoleon Appliance Corp.



Wolf Steel Montreal



Wolf Steel USA



Proudly Made in North America



Wolf Steel Corporate Offices

**Legend**

- Advanced Burner System  
YELLOW DANCING FLAME®
- Heat Circulating Blower
- Radiant Heat
- Multi Function Digital Remote Control
- No Electricity Required to Light or Operate
- Money Saving
- Built-in NIGHT LIGHT™ or CRYSTALITES™
- Napoleon® Exclusive Feature



FIRE & LIGHT

Tureen™



Shown with Napoleon's stainless steel surround and hearth



# The Tureen™ GD82-T

Combining style, modernism and elegance into one fireplace, Napoleon® is excited to include the Tureen™ into their Modern Collection of fireplaces. A totally unique modern style, showcasing a contemporary ceramic bowl, accented with stylish river rocks and a towering flame. It's impressive design is certain to create a dynamic and extraordinary focal point wherever it is installed.



## Napoleon® Exclusive Features

- **Exclusive Napoleon® Night Light™ radiates a warm glow to the room even when the fireplace is off**
- **The remarkable towering flame is created by the Tureen's unique heavy gauge Medallion™ burner system**
- **Concave polished satin chrome reflective panel**
- **Backed by President's Limited Lifetime Warranty**
- 50% flame/heat adjustment for maximum comfort and efficiency
- Double fired ceramic bowl is complemented with stylish refractory river rocks
- Heat radiating ceramic glass window
- No electricity required to light or operate - millivolt system ensures reliable use even during power failures
- 100% SAFE GUARD™ gas control system automatically and quickly shuts off the gas supply for your peace of mind
- Zero clearance to combustibles
- Controls are concealed from view but easily accessible
- Convenient hand-held thermostatic remote (controlling blower, flame intensity, temperature and NIGHT LIGHT™) comes standard with the unit
- Available as a natural gas or propane unit



Model	BTU'S (Input)	Venting 4" & 7"	Height		Front Width		Depth		Glass Size	
			Actual	Framing	Actual	Framing	Actual	Framing	Height	Width
GD82-T	26,000	Top	46"	58 1/2"	28"	29"	21"	22 1/2"	29"	22"

Model	Glass Window	Electronic Ignition	Efficiencies			Blower	Mobile Home Certified
			EnerGuide	AFUE	Steady State		
GD82-T	Ceramic	Yes	54.4%	-	62%	Included	Yes

Certified under Canadian and American National standards: CSA 2.33, ANSI Z21.88 for vented gas fireplace heaters. Figures may vary with individual conditions such as floor plan layout, insulation value/heat loss of the house and geographical location. Consult your owner's manual for complete and up-to-date installation instructions and proper clearances to combustible materials.

## Facing Kits



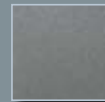
Rectangular facing kit available in painted black, brown, taupe and pewter



Taupe Finish



Brown Finish



Pewter Finish



Black Finish



Arched facing kit with Heritage pattern available in painted black



Arched facing kit with lattice pattern available in hand forged, solid wrought iron

FIRE & LIGHT



TORCH™

Shown with decorative red front



## Designer Options

# The Torch™ GT8

An ultra modern direct vent fireplace with a slim design featuring a reflective, prism shaped firebox. The simplicity of the single luminous flame glows with artistic character. The perfect accent for bedrooms, bathrooms, kitchens, entrance ways, hallways, offices, bars, lounges and waiting rooms. Versatile installations make it ideal for new construction and renovation projects, especially where space is limited.



### Napoleon® Exclusive Features

- **Optional dual accent lights, mounted underneath and above the unit add a distinct glow to the surrounding decor**
- **Innovative, clean face design with a tall, narrow viewing area**
- **Backed by President's Limited Lifetime Warranty**
- Zero clearance installation and extremely shallow firebox allows for versatile installation possibilities
- Single luminous flame glows throughout the firebox
- Porcelain Reflective Radiant Panels (that echo flames throughout the unique prism shaped firebox) and decorative glass embers come standard with the unit
- Heat radiating ceramic glass window
- Optional decorative frames are available in luxurious pewter, white, red, painted metallic black and steel blue finishes
- Optional cabinet allows for easy wall mount installation if recessing is not possible - ie: solid wall
- Available as a natural gas or propane unit
- Cost saving electronic ignition with two on/off switches (one for burner and one for optional light kit)
- 100% SAFE GUARD™ gas control system quickly and automatically shuts off the gas supply for your peace of mind
- Approved for bathroom, bedroom, bed sitting rooms and mobile homes
- Also available for outdoors in an all stainless steel model (GSST8) and an indoor vent free\* model (GVFT8)

### Exclusive Accent Lights



### Cabinets

Complete cabinet available in black for vent free\* unit and stainless steel for outdoor unit



### Frame/Front

Available in luxurious pewter, stainless steel, white, metallic black, red and steel blue finishes



Pewter

Stainless Steel

White



Metallic Black

Red

Steel Blue

Model	BTU'S (Input)	Venting 3" & 5"	Height		Front Width		Depth		Glass Size	
			Actual	Framing	Actual	Framing	Actual	Framing	Height	Width
GT8	6,000	Rear	37 3/4"	44 1/4"	12"	14 1/2"	6 3/4"	7"	26"	10 1/2"

Model	Glass Window	Electronic Ignition	Efficiencies			Blower	Mobile Home Certified
			EnerGuide	AFUE	Steady State		
GT8	Ceramic	Yes	58.0%	-	78%	N/A	Yes

\*Vent free not approved in Canada and some States.  
 Certified under Canadian and American National standards: CSA 2.22, ANSI Z21.50 for vented gas fireplaces.  
 Figures may vary with individual conditions such as floor plan layout, insulation value/heat loss of the house and geographical location.  
 Consult your owner's manual for complete and up-to-date installation instructions and proper clearances to combustible materials.



FIRE & LIGHT



CRYSTALLO™

Shown with pewter concave surround





## Designer Options

# The Crystallo™ BGD36CFG

It's crystal clear. A clean face design with an exclusive CRYSTALINE™ ember bed embraces Napoleon's new collection of contemporary fireplaces. The Crystallo™ provides inspiration to create a hearth experience that focuses on warmth, beauty and style. CRYSTALITES™ (lights that accent the crystals from below) can function with or without the flame and double as a night light. A unique hearth idea that sparkles with elegance!



### Napoleon® Exclusive Features

- Exclusive CRYSTALITES™ (lights that accent from underneath the ember bed) come standard with the unit
  - Exclusive CRYSTALINE™ ember bed sparkles with modern elegance
  - Optional decorative surrounds in Wave, Concave and Convex designs are available in luxurious pewter and brown finishes (comes with top and hearth satin chrome trim)
  - Backed by President's Limited Lifetime Warranty
- Top or rear vent design allows for versatile installation options
  - Cost saving electronic ignition with battery back up
  - Convenient on/off switch and built-in adjustable flame/heat control
  - Heat transferring glass window
  - Porcelain Reflective Radiant Panels, also standard with the unit, echo flames and crystal reflections throughout the firebox
  - Optional coloured glass media kits are available in Amber, Blue, Black and Red
  - Optional satin chrome upper trim also available for all three surround designs
  - Optional blower kit with variable speed and thermostatic control
  - Optional top door trim kit available in brushed stainless steel finish
  - Optional safety screen adds protection from inquisitive little hands
  - Optional convenient hand-held remotes
  - Optional hot air distribution kit
  - Certified for bathrooms, bedrooms, bed sitting rooms and mobile homes



Model	BTU'S (Input)	Venting 4" & 7"	Height		Front Width		Depth		Glass Size	
			Actual	Framing	Actual	Framing	Actual	Framing	Height	Width
BGD36CFG	17,000	Top/Rear	34"	38 3/4"	40"	40 1/4"	15"	17 1/4"	19 3/8"	31 5/8"

Model	Glass Window	Electronic Ignition	Efficiencies			Blower	Mobile Home Certified
			EnerGuide	AFUE	Steady State		
BGD36CFG	Tempered	Yes	59.4%	53%	64%	Optional	Yes

Certified under Canadian and American National standards: ANSI Z21.88 and CSA 2.33 for vented gas fireplace heaters. Figures may vary with individual conditions such as floor plan layout, insulation value/heat loss of the house and geographical location. \*Wave, Concave & Convex surrounds measure 38" high and 42" wide and require modified fireplace clearances. Consult your owner's manual for complete and up-to-date installation instructions and proper clearances to combustible materials.

### Facing Kits

Decorative surrounds\* are available in luxurious pewter or brown finishes.



Wave



Convex



Concave

### Trim

Surrounds include top and hearth satin chrome trim



### Coloured Glass Options



Amber



Black



Blue



Red

# FIRE & LIGHT



HD81 See-Thru shown with CRYSTALINE™ ember bed and Porcelain Reflective Radiant Panels



## Designer Options

### Exclusive Night Light™



### Firebox Options



Contemporary CRYSTALINE™ Setting



PHAZER® log set



Contemporary River Rock Setting

### Burner Trim

Polished Chrome Accent Trim for River Rock Setting



### Coloured Glass Options



Amber



Black



Blue



Red



Remote included

# See-Thru HD81

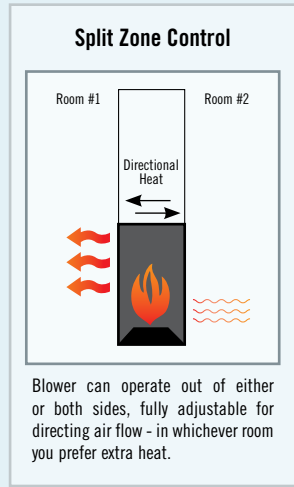
As well as providing two rooms with an exceptional see-thru design, the HD81 offers three distinct firebox options - a traditional PHAZER® log set, a contemporary crystal setting or a glowing river rock ember bed. Each setting radiates a glow and ambiance throughout the adjoining rooms. Perfect for bedroom/bathrooms, kitchen/dining and office/commercial spaces.



## Napoleon® Exclusive Features

- Exclusive Napoleon® Night Light™ radiates a warm glow to the room even when the fireplace is off
- Choice of traditional PHAZER® logs, CRYSTALINE™ crystals or River Rock ember beds
- Optional high output blower system, which can be remotely located for WHISPER QUIET™ operation, pushes the heat out from above the door openings with SPLIT ZONE™ control
- See-thru, clean face design can be enjoyed from two separate rooms - see illustration
- Backed by President's Limited Lifetime Warranty

- Fuel saving electronic ignition with battery back-up
- Innovative, split burner system produces a beautiful YELLOW DANCING FLAME® pattern and provides a huge heating range from 22,000 BTU's to 60,000 BTU's
- Exclusive standard dual NIGHT LIGHT™ system illuminates the ember bed and firebox while gently adding a glow to the room, even when the fireplace is off
- Convenient hand-held remote, controlling the flame, blower and NIGHT LIGHT™ comes standard with the unit
- Perfect for residential or commercial use
- Optional Porcelain Reflective Radiant Panels or decorative Sandstone Panels
- Optional Power Vent kit makes difficult installation locations possible with added flex vent and termination versatility
- Certified for bathrooms, bedrooms, bed sitting rooms and mobile homes



Model	BTU'S (Input)	Venting 8" & 10"	Height		Front Width		Depth		Glass Size	
			Actual	Framing	Actual	Framing	Actual	Framing	Height	Width
HD81	60,000	Top	40 1/4"	49 1/4"	52"	54 1/2"	25"	25"	30 3/4"	36 3/4"

Model	Glass Window	Electronic Ignition	Efficiencies			Blower	Mobile Home Certified
			EnerGuide	AFUE	Steady State		
HD81	Ceramic	Yes	64%	64.5%	67%	Optional	Yes

Certified under Canadian and American National standards: ANSI Z21.88 and CSA 2.33 for vented gas fireplace heaters. Figures may vary with individual conditions such as floor plan layout, insulation value/heat loss of the house and geographical location. Consult your owner's manual for complete and up-to-date installation instructions and proper clearances to combustible materials.



FIRE & LIGHT



LHD50 shown in contemporary CRYSTALINE™ setting with white surround



## Designer Options



Clean installation with no surround

### Decorative Surrounds



White



Pewter



Black

### Door Frame Trim



(for non-operating side of see-thru unit)

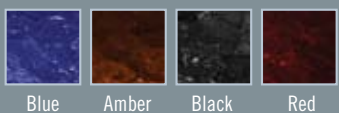
### Geo Shapes



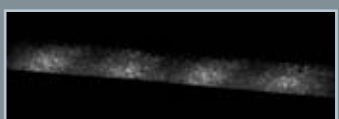
### River Rocks



### Coloured Glass Options



Blue Amber Black Red



Napoleon's Exclusive CRYSTALITES™

# LHD50 - Linear High Definition Series

From its sleek linear design to the amazing choice of contemporary fireplace medias, Napoleon's Linear Series provides you with a luxurious fireplace experience. Enjoy the radiant glow from the standard CRYSTALINE™ ember bed or choose the option of river rocks, or coloured glass. Available as a one-sided or see-thru model.



## Napoleon® Exclusive Features

- Standard CRYSTALITES™ (lights that accent from underneath the ember bed)
- Clear CRYSTALINE™ glass ember bed comes standard
- Optional media enhancement kits (river rocks, twigs, geo shapes and coloured glass) can be added to any of the ember bed choices
- Backed by President's Limited Lifetime Warranty
- Up to 30,000 BTU's with adjustable flame/heat control for maximum comfort and efficiency
- 50" linear, contemporary design
- Fuel saving electronic ignition with battery back up
- Available as a see-thru or a one-sided unit
- Heat radiating ceramic glass window
- Linear burner creates a uniform flame pattern
- Curved, prism shaped Porcelain Reflective Radiant Panels with arched firebox accent inlays (porcelain white or pewter) are available for the one-sided unit
- Convenient thermostatic remote, controlling the flame and CRYSTALITES™ comes standard with this unit
- Optional contemporary designer surrounds
- Optional door frame trim (limits access to door: suitable for non-operating side of see-thru unit) available in Satin and Polished Chrome
- Perfect for residential or commercial applications
- Certified for bedrooms, bathrooms, bed sitting rooms and mobile homes



Remote included

Model	BTU'S (Input)	Venting 5" & 8"	Height		Front Width		Depth		Glass Size	
			Actual	Framing	Actual	Framing	Actual	Framing	Height	Width
LHD50	30,000	Top	16 1/4"	60 1/2"	50 1/4"	67 7/8"	13 1/2"	23 3/4"	14 1/4"	48"
LHD50-2	30,000	Top	16 1/4"	60 1/2"	50 1/4"	67 7/8"	13 1/2"	13 1/2"	14 1/4"	48"

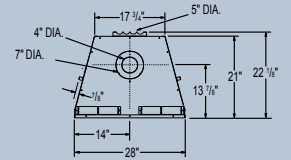
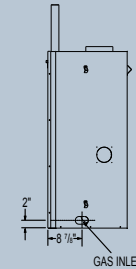
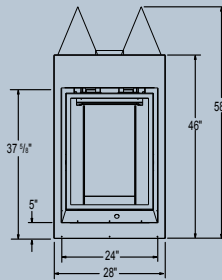
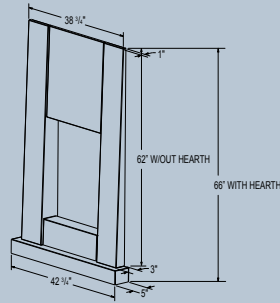
Model	Glass Window	Electronic Ignition	Efficiencies			Blower	Mobile Home Certified
			EnerGuide	AFUE	Steady State		
LHD50	Ceramic	Yes	56%	-	79%	N/A	Yes
LHD50-2	Ceramic	Yes	56%	-	79%	N/A	Yes

Certified under Canadian and American National standards: ANSI Z21.50 and CSA 2.22 for vented gas fireplace. Figures may vary with individual conditions such as floor plan layout, insulation value/heat loss of the house and geographical location. Consult your owner's manual for complete and up-to-date installation instructions and proper clearances to combustible materials.

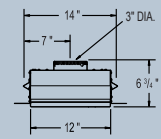
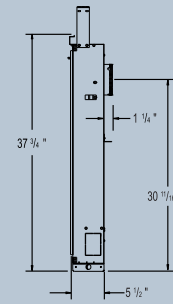
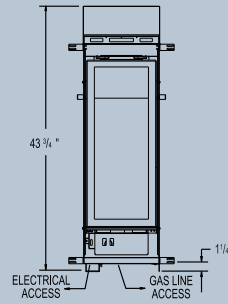
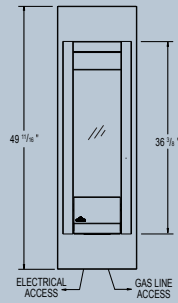
# Modern Series Dimensions

## Model

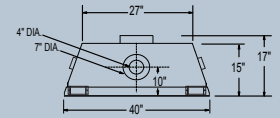
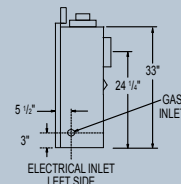
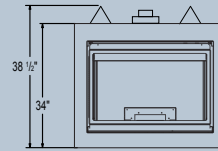
GD82-T  
The Tureen™



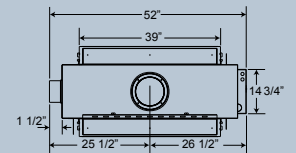
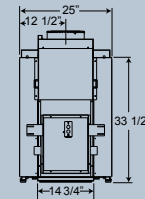
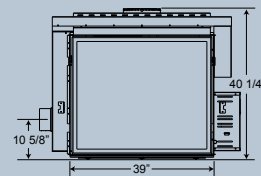
GT8  
The Torch™



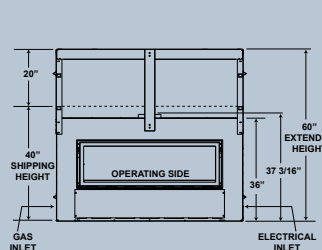
BGD36CFG  
The Crystallo™



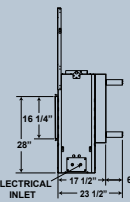
HD81  
See-Thru



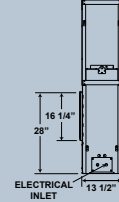
LHD50  
Linear Series



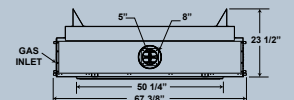
One sided



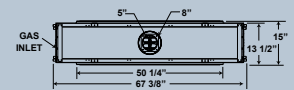
Two sided



One sided



Two sided







# Outstanding Features of Napoleon's Advanced Technology



## Advanced Burner Technology

Napoleon's sophisticated burner system offers superior flame technology. Strategically placed burner ports create the most realistic flames in the industry.



## Finely Tuned Precision Valves

Surrounded with a protective cast aluminum jacket, the precision valves allow for ultimate reliability and 100% SAFE GUARD™ gas control system.



## Exclusive NIGHT LIGHT™

Napoleon's exclusive NIGHT LIGHT™ illuminates the decorative firebox even when the fireplace is turned off.



## Convenient Remote Controls

Napoleon's remotes with digital read out and thermostatic control give you the comfort level you need at the touch of a button.



## High Heat Ceramic Glass

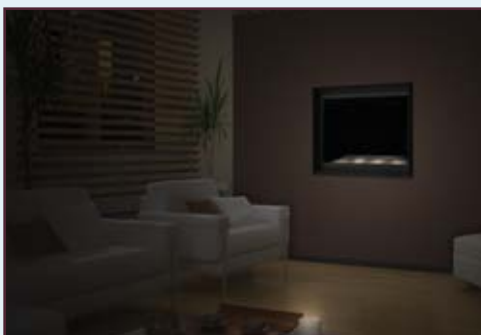
Ceramic glass is manufactured for maximum radiant heat performance.



## WHISPER QUIET™

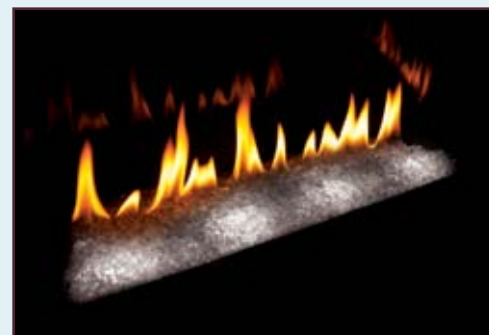
### Heat Circulating Blower System

The extreme heat resistant "H" class bearings featured in Napoleon's superior heat circulating blower, creates a lasting "whole home" comfort with adjustable high & low speeds.



## CRYSTALITES™

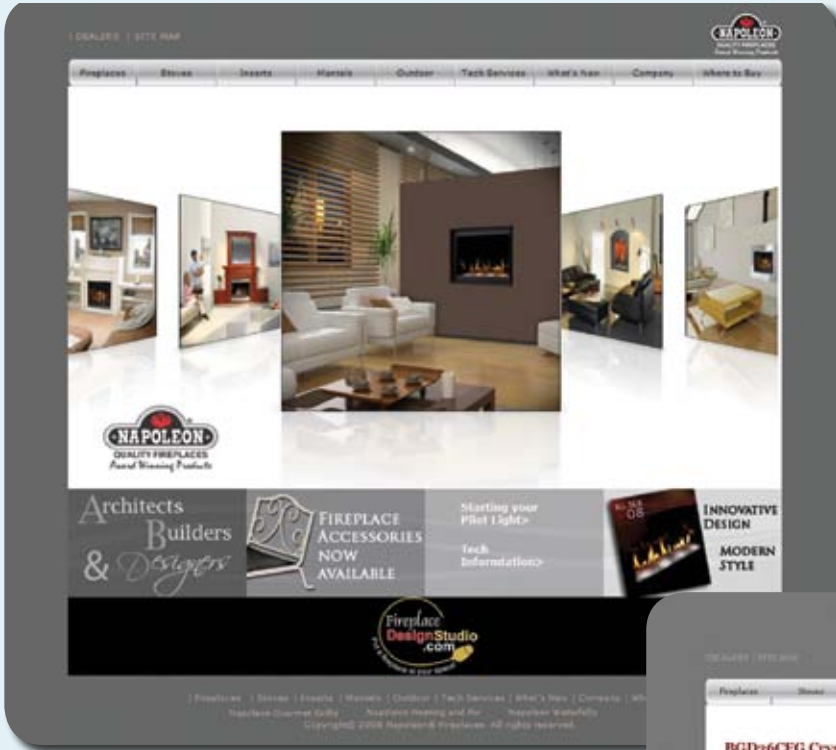
Lights that accent the ember bed from below add elegance to the firebox even when the fireplace is turned off.



## CRYSTALINE™ Ember Bed

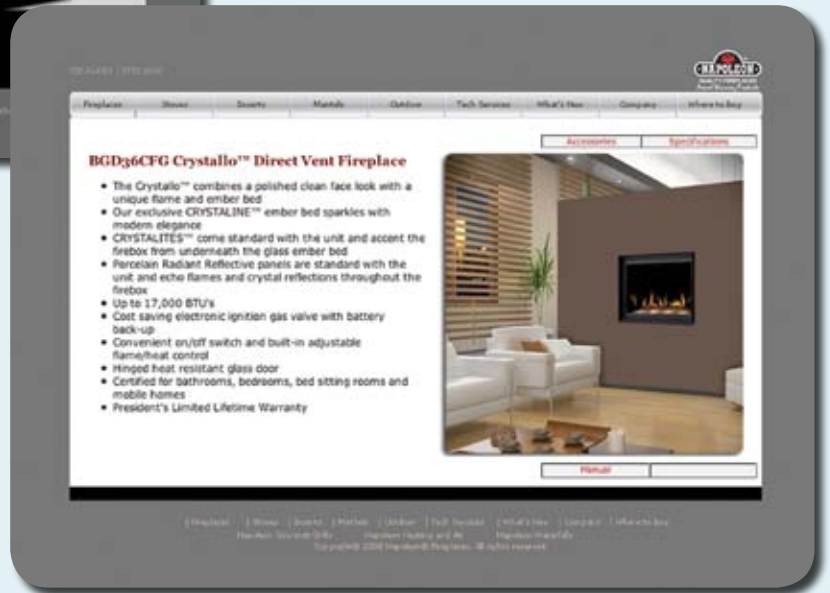
Sparkling crystals add a modern elegance to fireplace designs.

## Experience Napoleon's Impressive Product Selection Online



Please visit our website, [www.napoleonfireplaces.com](http://www.napoleonfireplaces.com) for more information on our complete line of wood, gas, oil and electric fireplaces, stoves and inserts as well as the Napoleon® Waterfall collection. Click "Where to Buy" to find the dealer nearest you.

We also have a complete line of outdoor living products including outdoor gas fireplaces, patio heaters, an outdoor gas firepit and gourmet gas grills.



### Other Napoleon® Products



Fireplace Inserts



Outdoor Living Products



Wood Burning Fireplaces



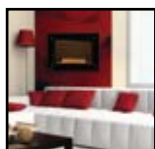
Gas Stoves



Waterfall Collection



Vent Free Fireplaces



Electric Fireplaces



Direct Vent Fireplaces

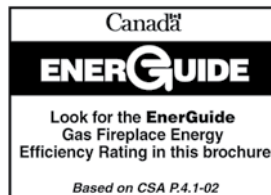


Gourmet Gas Grills

Consult your owner's manual for complete installation instructions and proper clearances to combustible materials. Check all local and national building codes and gas regulations. All specifications are subject to change without prior notice due to on-going product improvements. Products may not be exactly as shown. Napoleon® is a registered trademark of Wolf Steel Ltd. Patent U.S. 5,307,801, 75054-Can. 2,073,411, 2,082,915, 74589 © Wolf Steel Ltd. Patents Pending. **EnerGuide** - A Canadian efficiency standard based on frequent, short start-up and cool-down cycles. All appliances sold in Canada are subject to this EnerGuide rating system. **AFUE** - A US efficiency standard (Department of Energy) based on extended on/off cycles, more typical of fireplace usage. **Steady State** - Reflects the highest possible overall heating efficiency.



• 103 Miller Drive, Crittenden, Kentucky, USA 41030  
 • 24 Napoleon Road, Barrie, Ontario, Canada L4M 4Y8  
 • 7200 Trans Canada Highway, Montreal, Quebec, Canada H4T 1A3  
 Tel: 705-721-1212 Fax 705-722-6031  
[www.napoleonfireplaces.com](http://www.napoleonfireplaces.com)  
[www.fireplacedesignstudio.com](http://www.fireplacedesignstudio.com)



Authorized Dealer