
Intelligent Heating[™] for Your Home



Buderus

A Better Way to Heat Your Home



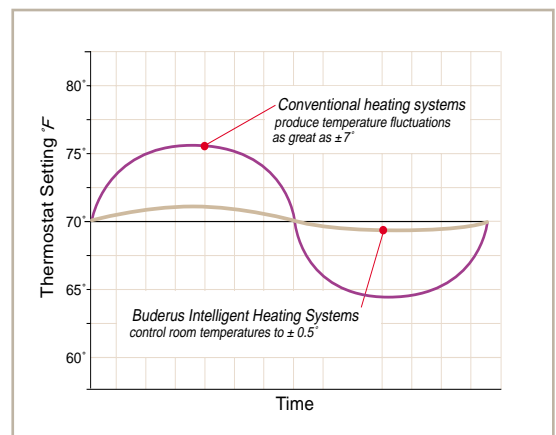
Conventional Heating Systems Leave Your Home Too Hot or Too Cold

Conventional residential heating systems lack the subtlety and sophistication to keep your home at a desired temperature. They function at only the most basic level—ON or OFF.

Conventional heating systems turn on only when house temperatures drop (as much as 7°) below the thermostat setting, and the house becomes uncomfortably cool.

When the boiler starts, it heats and circulates water at only one temperature—typically 170° to 180° F and keeps heating and circulating this high-temperature water until the thermostat signals it to stop. After the boiler shuts down, the temperature in the house continues to rise—often well above desired levels—until the water in the pipes cools. This wastes expensive heating fuel and makes the house uncomfortably warm.

Intelligent Heating Produces More Comfortable Room Temperatures



Conventional boilers leave room temperatures too hot or too cold—often varying up to $\pm 7^\circ$ from the thermostat setting. Buderus low-temperature boilers provide more consistent heat, eliminating these wide temperature swings.

Buderus Intelligent Heating Systems™ Minimize Temperature Cycling

Whether you heat by baseboard, panel radiators, hydro-air systems or radiant flooring, Buderus Intelligent Heating Systems™ maintain a constant temperature in your home, eliminating the wide temperature swings of conventional heating systems.

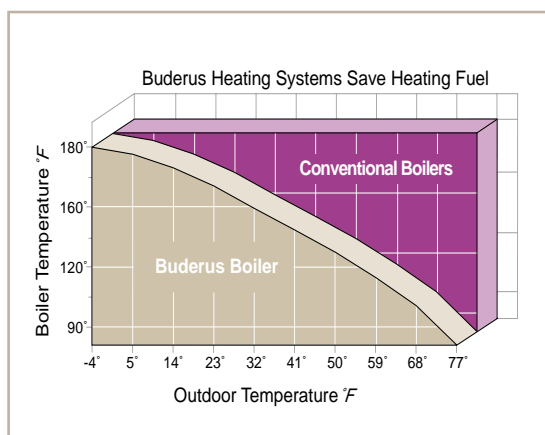
The Buderus Logamatic Control uses advanced microprocessor technology to monitor inputs from indoor and outdoor sensors, compensate for the weather, and ensure consistent room temperatures. Unlike conventional systems, the Logamatic control adjusts water temperatures to maintain a desired comfort level, eliminating chills and overheating.

Improved Comfort and Fuel Economy

With the ability to “look ahead” and optimize water temperatures, Buderus heating systems provide more consistent, more comfortable heat using far less fuel than conventional high-temperature systems.

In fact, Buderus heating systems typically pay for themselves in fuel savings in less than 5 years.

Lower Boiler Operating Temperatures Save Heating Fuel



The difference between the constant high operating temperature of conventional boilers (typically 180°F) and the optimized water temperatures of a Buderus boiler means significant fuel savings.



Buderus

The Ideal Boiler — Replacement or New



Start with a Buderus Boiler

Your serviceman just told you you're going to need to replace your boiler. But, your hot water heater is only 2 to 3 years old. No problem.

Buderus boilers are ideal replacements for virtually any make or model oil, natural gas, or propane boiler. They can deliver heat through standing cast iron radiators, fin-tube baseboard, hydro warm air, or Buderus panel radiators. With standard fittings and connections, they are quickly and easily installed and are compatible with most hot water storage tanks and all conventional water heaters.

Build a System Gradually...

Once you have a Buderus boiler, you can add an indirect-fired hot water heater, an optional Logamatic control, or both. The Logamatic control will not only maximize your comfort and fuel savings, it will accommodate specialized heating applications such as radiant floor heat and snow/ice melting. Before long, you'll have a premium heating system that will provide years of exceptional comfort and economy...for little more than the cost of standard replacement components.



Construction

Or All at Once

If you're building a new home, you can install a Buderus heating system for slightly more than the cost of most contractor-grade systems. Not only will it pay for itself in a few years, *a Buderus system will outlast and outperform virtually any other residential hot water heating system!* And, should you decide to sell your home, a Buderus heating system will add to your home's attractiveness and value.



Buderus

Tailor a System to Your Home and Lifestyle



Exceptional Efficiency and Economy

Buderus heating systems are designed in Europe, where fuel costs are considerably higher than in the United States and environmental regulations are more stringent. Their superior design and construction maximizes the heating value of every ounce of fuel — whether in operation or on standby.

Buderus boilers:

- Are Energy Star-compliant
- Are constructed of superior quality materials that store heat energy and minimize inefficient system cycling
- Have optimum chamber geometries for maximum heat transfer and efficiency
- Are superinsulated for minimal standby losses and feature energy-saving flue designs for minimal stack losses

Buderus hot water tanks:

- Are so well insulated that hot water stored in them loses less than $\frac{1}{4}$ °F per hour
- Can be equipped with optional recirculation for instantly available, unlimited hot water

One Control for Both Heating and Hot Water

The Logamatic microprocessor control manages both home heating and domestic hot water. In addition to room temperature control, the Logamatic also provides domestic hot water priority, adjustable and high limit aquastats, and a manual override for emergency operation of both space and hot water heating.

Its microprocessor design allows the programming of settings/setbacks for: day/night, automatic summer/winter changeover, and vacation mode. Just program it once, and forget it. The Logamatic control then:

- Considers both inside and outside temperatures for maximum control and comfort
- Provides “intelligent” heating control, optimizing system water temperature and domestic hot water production for maximum fuel efficiency
- Uses a “look-ahead” function to minimize overshoot and wasted heating dollars

Wide Range of Heat Delivery Options

Buderus heating systems can deliver heat in a variety of ways, offering homeowners maximum design flexibility. They can easily feed conventional cast iron radiators or fin-tube baseboard, modern radiant flooring or hydro-air systems, or any combination.

Elegant Panel Radiators Provide Both Radiant and Convective Heat

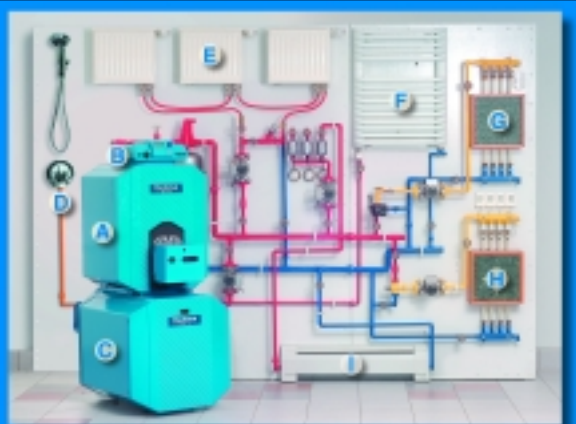
Although Buderus heating systems offer a choice of heating methods, they provide maximum comfort and efficiency when used with Buderus panel radiators. These elegant heating panels are available in a range of sizes in a neutral white finish that can be painted to blend seamlessly with any decor. In addition to heating the air in a room through convection, they also provide radiant heat which warms people and pets in much the same way as a stove or fireplace. The result is more comfortable heating without the design and decorating limitations imposed by conventional baseboard systems.

Designer Accessories Add Functionality With Style

Buderus also offers a line of designer accessories to help you deliver heat in unique and elegant ways. These accessories—bench radiators, heated towel racks, and sleek radiator walls—are designed to be stylish as well as functional.



Buderus: Tomorrow's Heating Technology for Today's Homes



- A** Buderus high-efficiency boiler
- B** Energy-saving Buderus Logamatic control
- C** Buderus hot water heater
- D** Hot water for bath and shower
- E** Low-profile Buderus panel radiators
- F** Buderus heated towel rack
- G** Radiant floor heat with carpeting
- H** Radiant floor heat with tile
- I** Fin-tube baseboard heater
- Hot water feed from boiler
- Warm water for radiant floor heat
- Hot water feed for bath and shower
- Cool water return to boiler

Buderus

Next Generation Heating Technology Saves



Whisper-Quiet Wall Hung Boilers Utilize Condensing Technology for Super Efficiency

Buderus wall hung boilers use combustion exhaust gases to reheat boiler return water, maximizing the heating value of costly fuel. As a result of this advanced condensing technology, they boast ultra-high efficiencies to 98%. These whisper-quiet boilers are available in natural gas or propane fired models.

Super-Compact, Space-Saving Units Heat Both Large and Small Homes

With today's active lifestyles, most homeowners have more things than they have room to store them. Space has become a valuable commodity. New super-compact Buderus wall-hung boilers with integral controls can be tucked into tight spaces, freeing up floor space for other, more practical uses. They require minimal clearances and fit comfortably in a standard size closet, above an open stairway, in an attic or garage, or even under a counter. And, their small size provides installation flexibility in homes without basements such as those built on concrete slabs, ranch-style homes, vacation homes, studios, or standalone structures with space limitations.

** Wall hung boilers available late Fall 2004.*



Money and Space in Today's Homes

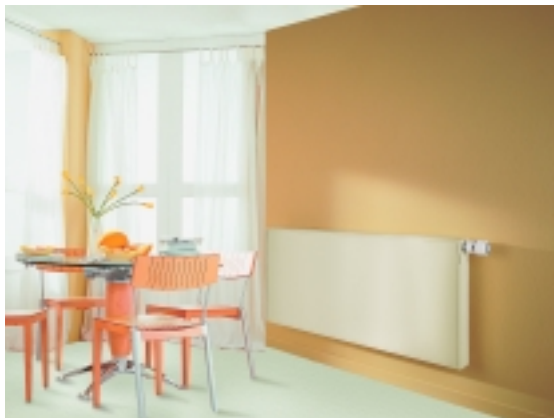
Panel Radiators Eliminate Restrictions On Interior Decorating or Furniture Placement

Conventional cast iron radiators or fin-tube baseboard often present obstacles to the effective use of floor and wall space within a room. They severely restrict the placement of wall units, sofas, end tables and other pieces of furniture as well as the placement of paintings, wall hangings, and other decorations. Buderus panel radiators, however, can be sized and placed where they will not interfere your lifestyle or your interior decor choices.

Buderus panel radiators have a slim profile and blend seamlessly with both traditional and modern decorating styles. They can also be easily painted to perfectly coordinate with your color schemes.

Radiant Floor Heating: The Ultimate Space Saver

Buderus low-temperature boilers are ideally suited to radiant floor heating applications. Not only does this type of heating make more sense for today's vaulted or cathedral ceiling style rooms, but it completely eliminates any and all restrictions on wall or room decorations.



Buderus

Easy to Install, Easier to Maintain



Built to Outlast Conventional Heating Systems

Buderus boilers, water heaters, and controls are designed and built to outlast conventional heating systems... even under conditions of constant use.

Simple to Install

Buderus boilers are designed for fast, easy installation:

- Integrated handles simplify transport, and compact size speeds installation
- Venting: chimney or two ETL-approved direct through-wall options
- Approved for installation on combustible flooring or in closets with 2" clearances
- Rear tapings for clean, finished appearance
- Built-in draft diverter for diluting flue gases

Buderus indirect-fired hot water storage tanks are available in horizontal or vertical standing tanks with a compact footprint for tight spaces.

Easy to Maintain

Buderus boilers and water heaters require only minimal routine maintenance, which is faster and easier than on most competitive systems.

- Silicon-rich cast iron resists cracking due to thermal shock and ensures long life
- Silicone protective coatings provide superior corrosion resistance
- Standard US-manufactured Honeywell controls
- Reversible, full-swing burner door allows easy access for thorough cleaning
- No refractory or target wall in chamber for reduced maintenance and service costs
- Attractive heavy-gauge blue enamel jacket

Nationwide Installation and Service

Service, upgrades, and accessories are available for all Buderus products through a nationwide network of factory trained installers and service technicians. Stocking distributors guarantee spare and replacement parts are readily available when needed.

For answers to questions about Buderus products or the name of your nearest wholesaler, call:

1-800-BUDERUS

or visit: www.buderus.net

The World Leader in Hydronic Heating

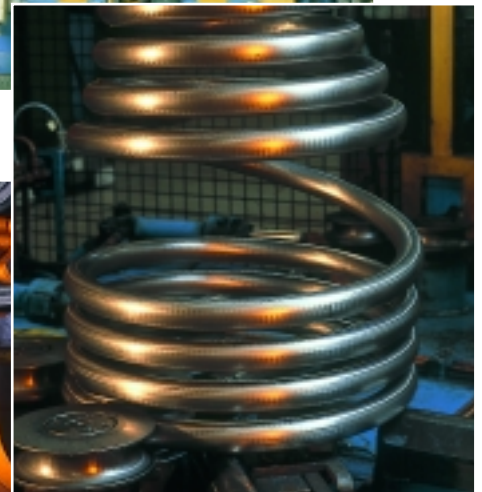
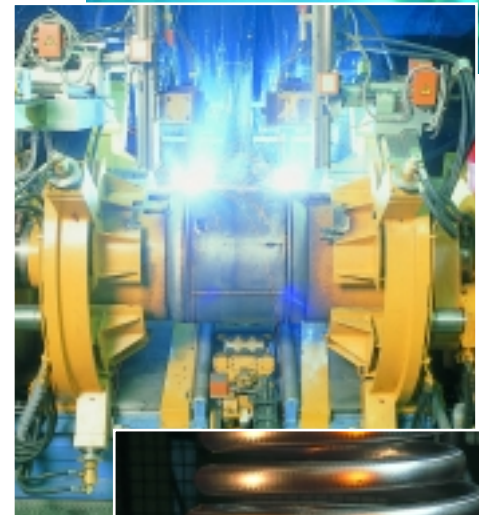


The World Standard in High-Efficiency Heating

Buderus has been developing new heating technologies since 1825. In fact, Buderus produced the world's first low-temperature hydronic heating systems. Today, Buderus products are acknowledged as the world standard in high-efficiency, low-emissions hydronic heating systems.

All Buderus products are designed in Europe to meet strict safety, efficiency, and environmental regulations. They meet or exceed all applicable US and Canadian regulations.

To ensure maximum performance and quality, Buderus products are completely manufactured and assembled in the company's, automated factories and 100% tested prior to shipment.



Buderus



North American Headquarters, Londonderry, NH

Buderus Hydronic Systems
50 Wentworth Avenue
Londonderry, NH 03053
TEL: (603) 552-1100
FAX: (603) 421-2719
www.buderus.net

Buderus