



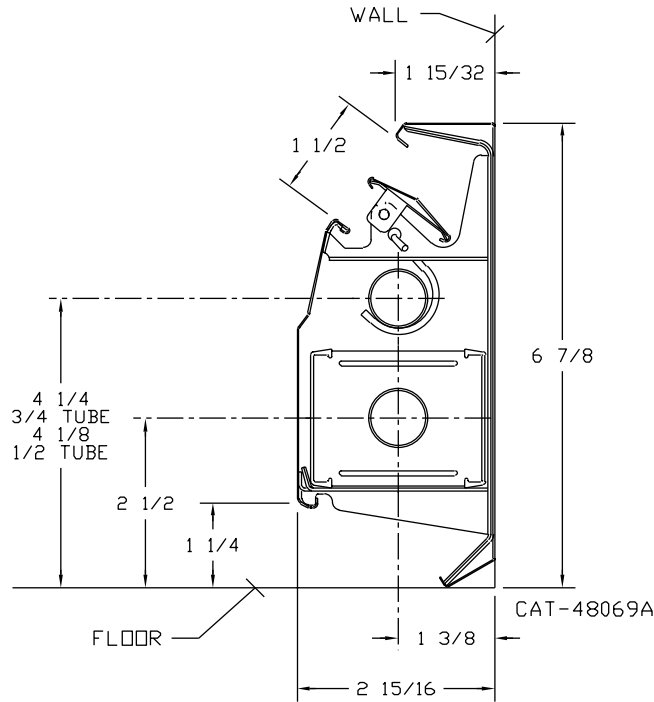
# PETITE•7

## Submittal

Baseboard Radiation

# Specification

- ENCLOSURE:**  
STYLE : "Petite•7"
- COLOR: White
- FRONT: 24 Ga. Roll Formed Prepainted Steel
- BACKPLATE:** 24 Ga. Roll Formed Prepainted Steel
- DAMPER VANE:** Roll Formed Prepainted Steel
- ELEMENT:**  
TYPE: Cu/Al Mechanically Expanded Flared One End
- BRACKETS:** Die Formed 18 Ga. Prepainted Steel
- SLIDE SHOES:** High Temperature Nylon Snap On Front and Back
- ACCESSORIES:** All overlapping with Snap Fit and Baked Enamel Finish



## RATINGS

| Flow Rate GPM | Average Hot Water Temperature °F - BTU/Hr./Lin. Ft. |      |      |      |      |      |      |      |      |      |      |      |      |      |      |      |      |      |      |
|---------------|---|------|------|------|------|------|------|------|------|------|------|------|------|------|------|------|------|------|------|
|               | P75A Assembly with 1/2" Element                     |      |      |      |      |      |      |      |      |      |      |      |      |      |      |      |      |      |      |
|               | 150°  | 155° | 160° | 165° | 170° | 175° | 180° | 185° | 190° | 195° | 200° | 205° | 210° | 215° | 220° | 225° | 230° | 235° | 240° |
| 4             | 420   | 450  | 490  | 520  | 560  | 590  | 620  | 660  | 690  | 730  | 760  | 790  | 820  | 870  | 900  | 930  | 960  | 990  | 1040 |
| 1             | 400   | 430  | 460  | 490  | 530  | 560  | 590  | 620  | 650  | 690  | 720  | 750  | 780  | 820  | 850  | 880  | 910  | 940  | 980  |
|               | P77A Assembly with 3/4" Element                     |      |      |      |      |      |      |      |      |      |      |      |      |      |      |      |      |      |      |
| 4             | 410   | 440  | 480  | 510  | 540  | 570  | 600  | 630  | 670  | 700  | 730  | 760  | 800  | 840  | 870  | 900  | 930  | 960  | 990  |
| 1             | 390   | 420  | 450  | 480  | 510  | 540  | 570  | 600  | 630  | 660  | 690  | 720  | 760  | 790  | 820  | 850  | 880  | 910  | 940  |



260 North Elm St., Westfield, MA 01085  
(413) 564-5545 Fax: (413) 562-8437

PROJECT: \_\_\_\_\_ DATE: \_\_\_\_\_  
 LOCATION: \_\_\_\_\_  
 ARCHITECT: \_\_\_\_\_  
 ENGINEER: \_\_\_\_\_  
 CONTRACTOR: \_\_\_\_\_  
 PO NUMBER: \_\_\_\_\_

# PETITE•7

*Submittal*

Baseboard Radiation

## Specification

Furnish and install where shown on all plans/drawings, Petite•7 Finned Tube Enclosure and Elements as described or approved equal of both quality and BTU capacity. Ratings are to be I=B=R approved.

The baseboard panel radiator enclosure, as called out Petite•7, will be manufactured from 24 gauge pre-painted bonderized C.R.S. All lateral bends are to be roll formed to ensure continuity of all adjoining enclosures and accessories. The enclosure lengths are to be provided in 12 inch increments from 2 feet through 8 feet long and 10 foot lengths. The front panel is to be fully engaged onto mounting brackets engaged with the back panel. Splice plate and damper joiner are to be used where two pieces of enclosure are adjoining each other in a run. These are to be included with all 5', 6' and 8' assembly packages.

All accessories will be die formed cold rolled steel and finished with a baked enamel finish. The accessories will overlap the installed enclosure and are to provide adjustment for make-up in the installed runs of enclosure. The accessories will extend to the floor. The accessories are to be enclosure height.

The brackets are to be of a one piece, die formed construction. The material is to be 18 gauge pre-painted bonderized C.R.S. The bracket is to be self locating for vertical positioning at installation. The bottom horizontal leg is to snap into bottom bend of the enclosure and is to support the element where slide shoes are located. Two high temperature nylon snap-on slide shoes are to be placed at the front and rear of element to prevent contact between fin and enclosure during expansion and contractions.

All elements are to be of the mechanically expanded type to ensure that proper fin to tube bonding is maximized. Copper/ Aluminum elements are to be provided with one end mechanically swaged (flared) for proper assembly.

In the interest of product improvement, we reserve the right to make changes without notice.