



SUNTEMP

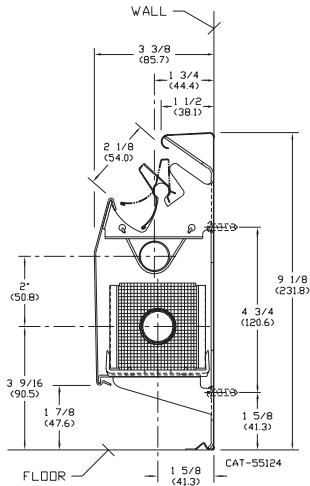


NST HIGH-OUTPUT 800

BASEBOARD RADIATION



DIMENSIONS



NOTE: DIMENSIONS IN (") ARE SHOWN IN MILLIMETERS.

RATINGS

MODEL	GPM	AVERAGE HOT WATER TEMPERATURE °F - BTU/HR./LIN. FT.								
		140°	150°	160°	170°	180°	190°	200°	210°	220°
800 3/4"	4	470	560	650	750	850	940	1040	1140	1240
	1	445	530	620	710	800	890	980	1080	1170
800 1"	4	455	540	630	730	820	920	1010	1120	1220
	1	430	510	600	690	780	870	960	1060	1150

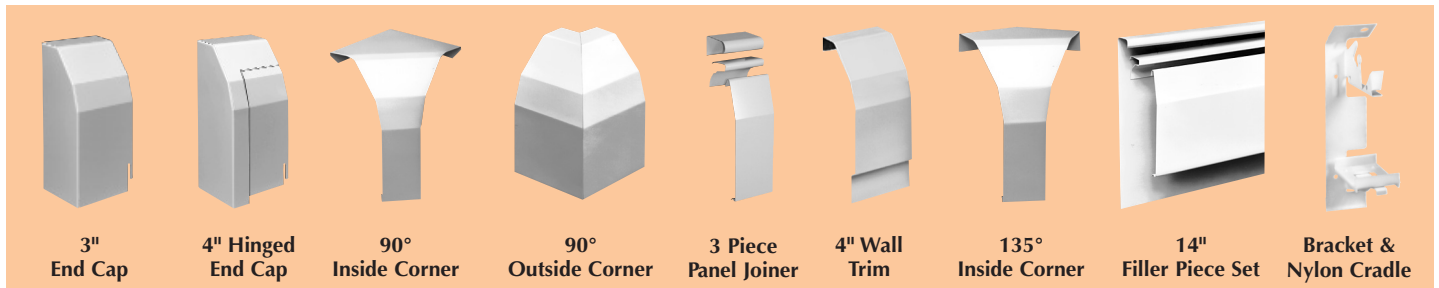
Correction Factors

If the calculated water flow rate through a baseboard is greater than the standard flow rate (1 GPM), the rating of that unit may be increased by multiplying the standard water rating at 1 GPM by the factor shown for the actual flow rate. All ratings based on 65°F entering air temperature.

G.P.M.	HEAT OUTPUT		PRES. DROP. (Millinches/Ft.)	
	FACTOR	3/4" ELEMENT	1" ELEMENT	
1.0	1.000	47	13	
1.5	1.016	96	26	
2.0	1.028	157	43	
2.5	1.038	230	63	
3.0	1.045	320	87	

G.P.M.	HEAT OUTPUT		PRES. DROP. (Millinches/Ft.)	
	FACTOR	3/4" ELEMENT	1" ELEMENT	
3.5	1.051	420	114	
4.0	1.057	525	145	
4.5	1.062	650	178	
5.0	1.067	775	216	
6.0	1.074	1060	290	

ACCESSORIES



PACKAGING

COMPLETE UNIT (3/4" TUBE)	COMPLETE UNIT (1" TUBE)	ENCLOSURE ONLY	ELEMENT ONLY (3/4" TUBE)	ELEMENT ONLY (1" TUBE)	LENGTH	NO. OF ELEMENT BRACKETS
800CU75-8	800CU100-8	800CO-8	E75-8	E100-8	8'	4
800CU75-7	800CU100-7	800CO-7	E75-7	E100-7	7'	3
800CU75-6	800CU100-6	800CO-6	E75-6	E100-6	6'	3
800CU75-5	800CU100-5	800CO-5	E75-5	E100-5	5'	3
800CU75-4	800CU100-4	800CO-4	E75-4	E100-4	4'	2
800CU75-3	800CU100-3	800CO-3	E75-3	E100-3	3'	2
800CU75-2	800CU100-2	800CO-2	E75-2	E100-2	2'	2

STANDARD ACCESSORIES

CATALOG NUMBER	DESCRIPTION	QTY.	CATALOG NUMBER	DESCRIPTION	QTY.	CATALOG NUMBER	DESCRIPTION	QTY.
800-REC	4" Hinged End Cap, Right	12	800-ICB	135° Inside Corner	AO	800-RTH	Return Tubing Upper Hanger	AO
800-LEC	4" Hinged End Cap, Left	12	800-OC	90° Outside Corner	10	800-BR	Support Bracket & Nylon Cradle	AO
800-3REC	3" Solid End Cap, Right	10	800-OCB	135° Outside Corner	AO	NST-TUP	Touch-Up Spray Paint	6
800-3LEC	3" Solid End Cap, Left	10	800-WJ	4" Wall Trim To Floor	12	800-ESC	Element Slide Cradle	12
800-4REC	4" Solid End Cap, Right	8	800-PJ3	2" Panel Joiner (3 pcs.)	12			
800-4LEC	4" Solid End Cap, Left	8	800-FIS	14" Filler Piece Set (3 pcs.)	AO			
800-IC	90° Inside Corner	12	800-STH	Supply Tubing Lower Hanger	AO			

NOTE: AO = Quantity As Ordered