

Troubleshooting Procedure

Water Pressure Switch Replacement



Grand Hall USA, Inc. 3838 West Miller Road Garland, Texas 75041 TEL 866 946 1096 FAX 972 279 8440 www.eternalwaterheater.com

Applicable Models:
508 Series

Description:
Step by step instructions on how to replace Water Pressure Switch on the Eternal Hybrid Water Heater

Approx. 10 Min.

Water Pressure Switch Replacement Instructions

Power off the unit and shut off the water supply to the heater

Remove Front Panel:

- a. Loosen five screws
- b. Remove the front panel



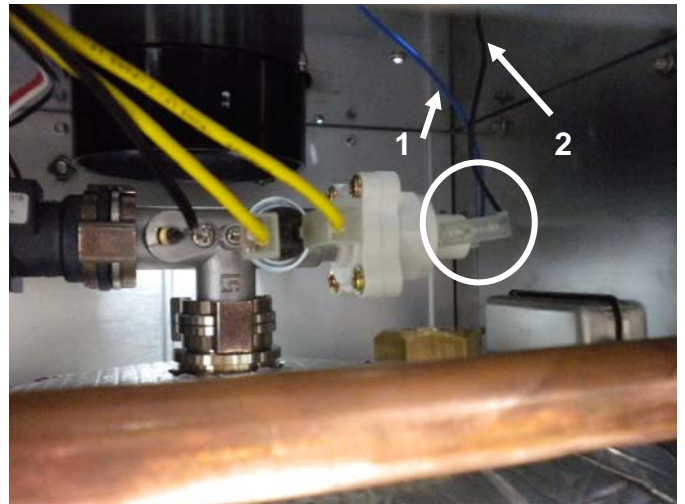
Loosen the screw to open the PCB Main Controller Cover



Locate the Water Pressure Switch towards the upper right of the unit

To remove the Water Pressure Switch:

- a. Disconnect the two wires from the Water Pressure Switch
- b. Remove the Water Pressure Switch from Hot water outlet pipe



Consumer Notice: The information and instruction in this bulletin are intended for use by skilled professionals. These instructions should not be performed by consumers. Call your professional person for help.