

Troubleshooting Procedure

Air Pressure Switch Replacement



Grand Hall USA, Inc. 3838 West Miller Road Garland, Texas 75041 TEL 866 946 1096 FAX 972 279 8440 www.eternalwaterheater.com

Applicable Models:

508 Series

Description:

Step by step instructions on how to replace Air Pressure Switch on the Eternal Hybrid Water Heater

Approx. 10 Min.

Air Pressure Switch Replacement Instructions

Power off the unit and unplug the power cord to the outlet

Remove Front Panel:

- a. Loosen five screws
- b. Remove the front panel

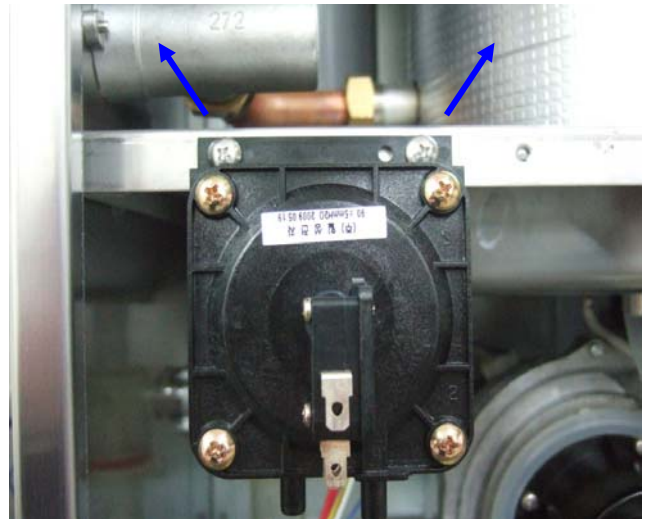


Locate the Air Pressure Switch towards the lower left of the unit

Disconnect the two wires and air tube from the Air Pressure Switch



Remove the two Philips head screws and Air Pressure Switch comes right out



Note:

**Make sure to reconnect wires exactly as you found the unit when first opened.
Connect the air pressure rubber hose to port on the switch marked with "H".**

Consumer Notice: The information and instruction in this bulletin are intended for use by skilled professionals. These instructions should not be performed by consumers. Call your professional person for help.