

Troubleshooting Procedure

PCB Main Controller Replacement



Grand Hall USA, Inc. 3838 West Miller Road Garland, Texas 75041 TEL 866 946 1096 FAX 972 279 8440 www.eternalwaterheater.com

Applicable Models:
508 Series

Description:
Step by step instructions on how to replace PCB Main Controller on the Eternal Hybrid Water Heater

Approx. 15 Min.

PCB Main Controller Replacement Instructions

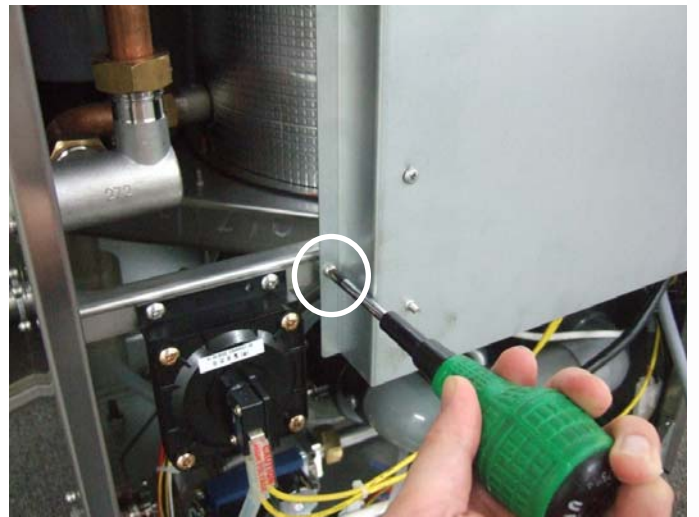
Power off the unit and shut off the water supply to the heater

Remove Front Panel:

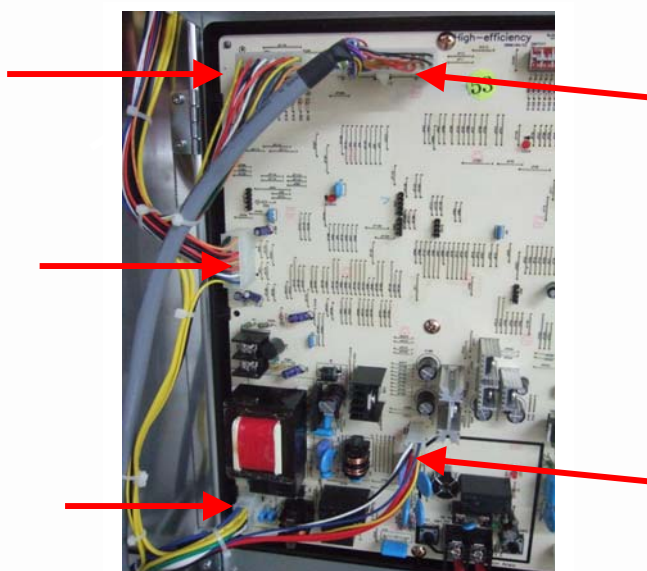
- a. Loosen five screws
- b. Remove the front panel



Loosen the screw to open the PCB Main Controller Cover



Unplug the five wire connectors and gently wiggle the connectors loose from the sockets



Remove the two Philips head screws to loosen the power supply wiring



Remove the four Philips head screws and PCB Main Controller Board comes right out



Reset Procedure:

- Open tap and run water until air has been purged and completely cold
- Plug the unit in and push power button to turn on
- Set unit to desired temperature and wait until unit initializes
- Unit will initialize by having one heating cycle on low fire for approximately 1-2 minutes, then purge exhaust
- Once initialized, unit is ready to reset to demand and will fully modulate

Consumer Notice: The information and instruction in this bulletin are intended for use by skilled professionals. These instructions should not be performed by consumers. Call your professional person for help.