

Troubleshooting Procedure

Subject:
Unit conversion to GU28 and GU20

Applicable Models:

501[11,12,21,22]1261 – GU26

501[11,12,21,22]1321 – GU32

Step by step converting instructions for GU28 and GU20

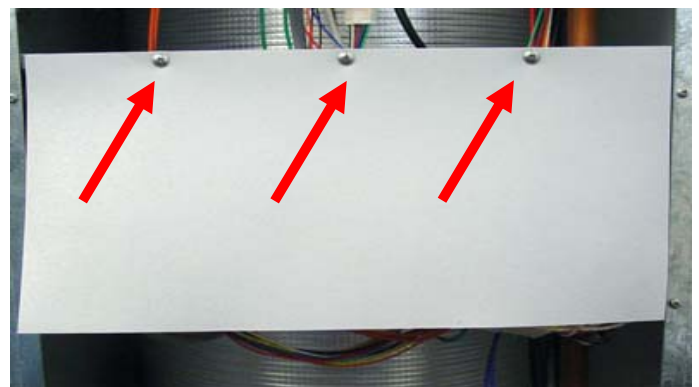
Remove Front Panel:

- a. Loosen two screws
- b. Push the front panel downward to remove

Power off the unit.

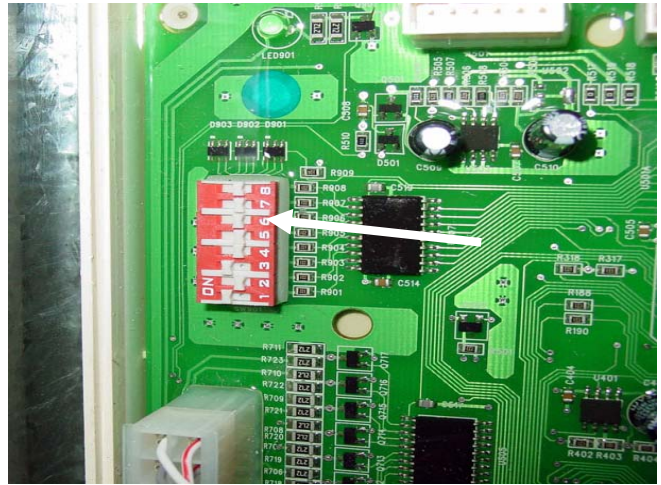


Remove the three Phillips head screws attaching the vinyl cover.



Locate the dip switches on the left side of the control board. Flip the number 6 switch from right to left (to the ON position).

GU26 is will now run on GU20 programming but GU32 needs valve current adjustment in order to run on GU28 programming.

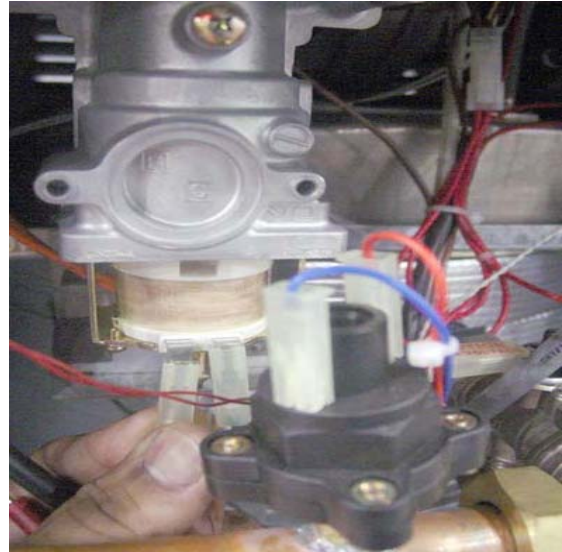


For GU32 /GU28 ONLY:

The gas valve current must to be adjusted from 126mA to 107mA on max fire.

Locate the gas valve on the upper left hand side of the unit. Disconnect one of the two green wires located on the bottom of the gas valve.

Using a multimeter, set the dial to Direct Current at 200mA. Push the black tester pin into the green wire connector. The red tester pin needs to stay touching with the gas valve connector.



Power on the unit.

Turn on multiple applications at once to run the unit to max fire (unit should display 9 gpm or more).

The multimeter should read 126mA which is the factory default setting for GU32.

Locate the blue potential meter on the control board.

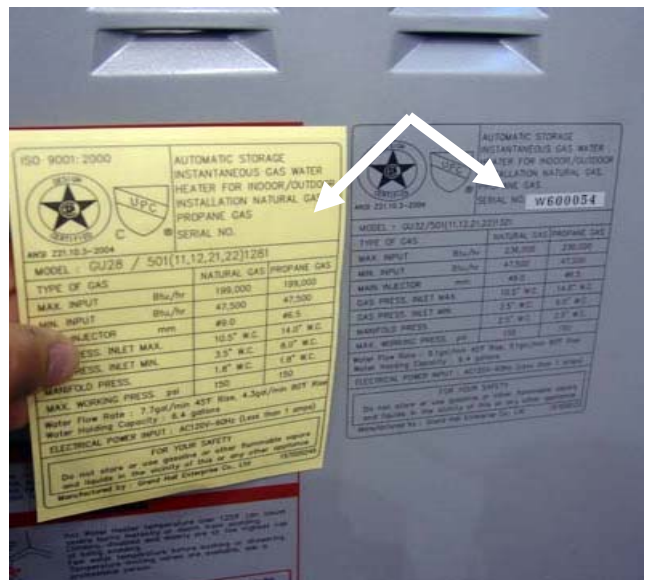
Use a precision flat head screwdriver and turn the adjustment screw to the left until the current on the gas valve is set to 107mA.



Unit label replacement

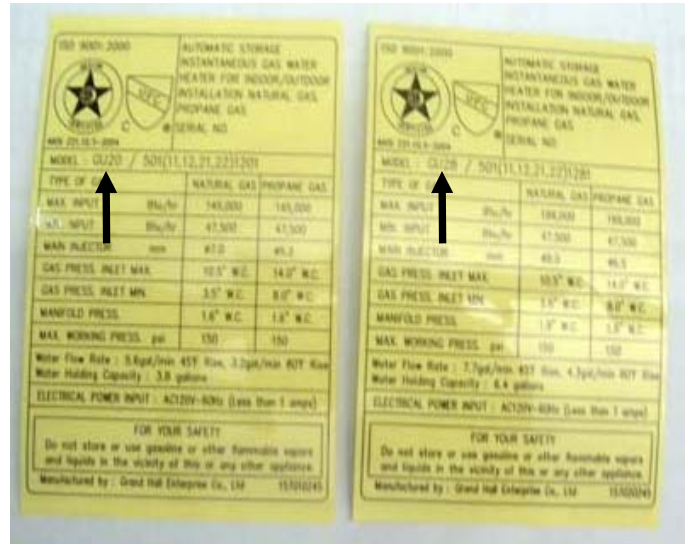
- Locate the label on the right hand side of unit.
- Remove the serial number and place it on the new label.
- Remove the old label from the unit and replace it with the new converted one.

Conversion process has been completed



The GU32 can only be down-rated to GU28, which limits maximum input to 199,000 BTUs/HR.

The GU26 can only be down-rated to GU20, which limited maximum input to 145,000 BTUs/HR.



Consumer Notice: The information and instruction in this bulletin are intended for use by skilled professionals. These instructions should not be performed by consumers. Call your professional person for help.