

## Troubleshooting Procedure

Subject:

LED Display Removal

eternal 

Grand Hall USA, Inc.  
3838 West Miller Road  
Garland, Texas, 75041  
TEL 877 934 7455  
FAX 972 279 8440  
[www.eternalwaterheater.com](http://www.eternalwaterheater.com)

### Applicable Models:

501[11,12,21,22]1261 – GU26

501[11,12,21,22]1321 – GU32

505[11,12]1261 – GU26DV

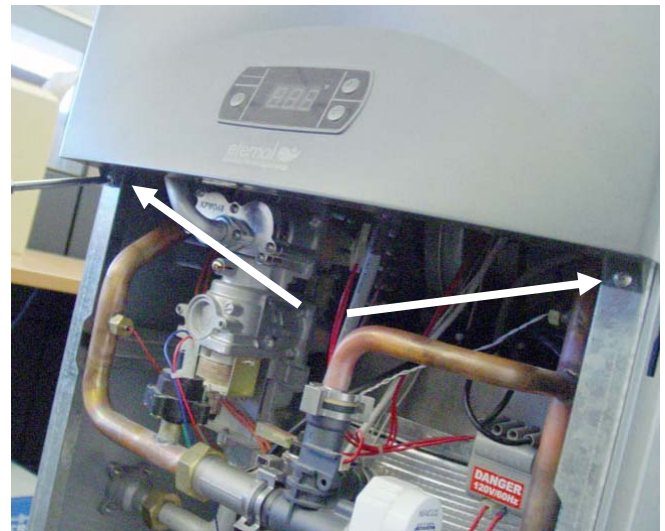
505[11,12]1321 – GU32DV

### LED Control Display Replacement Procedure

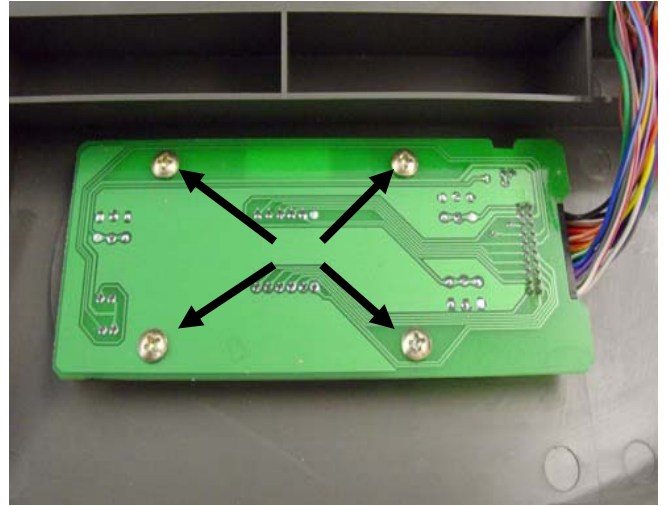
Loosen 2 screws securing the Front Panel on the bottom front, and push downwards to remove the Front Panel



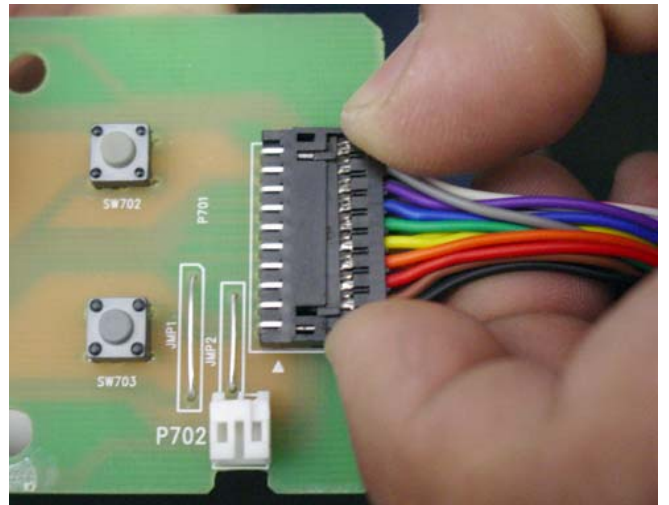
Loosen 2 screws securing the Control Panel Assembly to the Frame, and remove the Assembly from Water Heater.



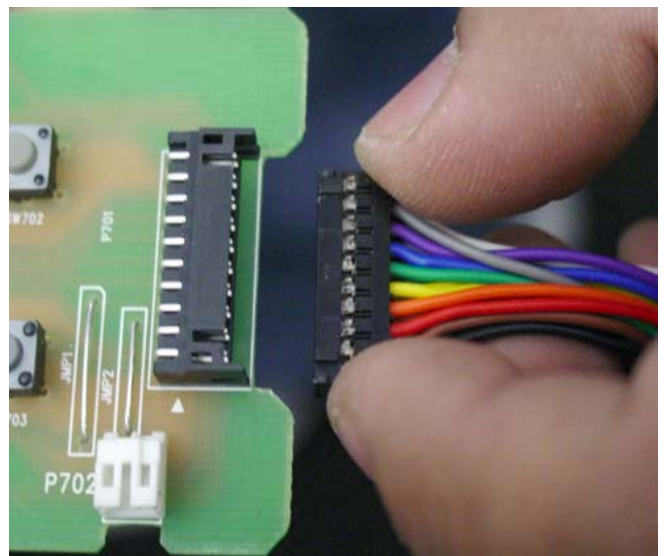
Remove the 4 screws securing the LED Display to the Front Panel.



To remove Wire Connector from LED Wire Port squeeze the sides of the connector and carefully wiggle the connection from side to side.



Once the Wire Connector is free reverse these steps to reinstall new LED Display.



**Consumer Notice:** The information and instruction in this bulletin are intended for use by skilled professionals. These instructions should not be performed by consumers. Call your professional person for help.