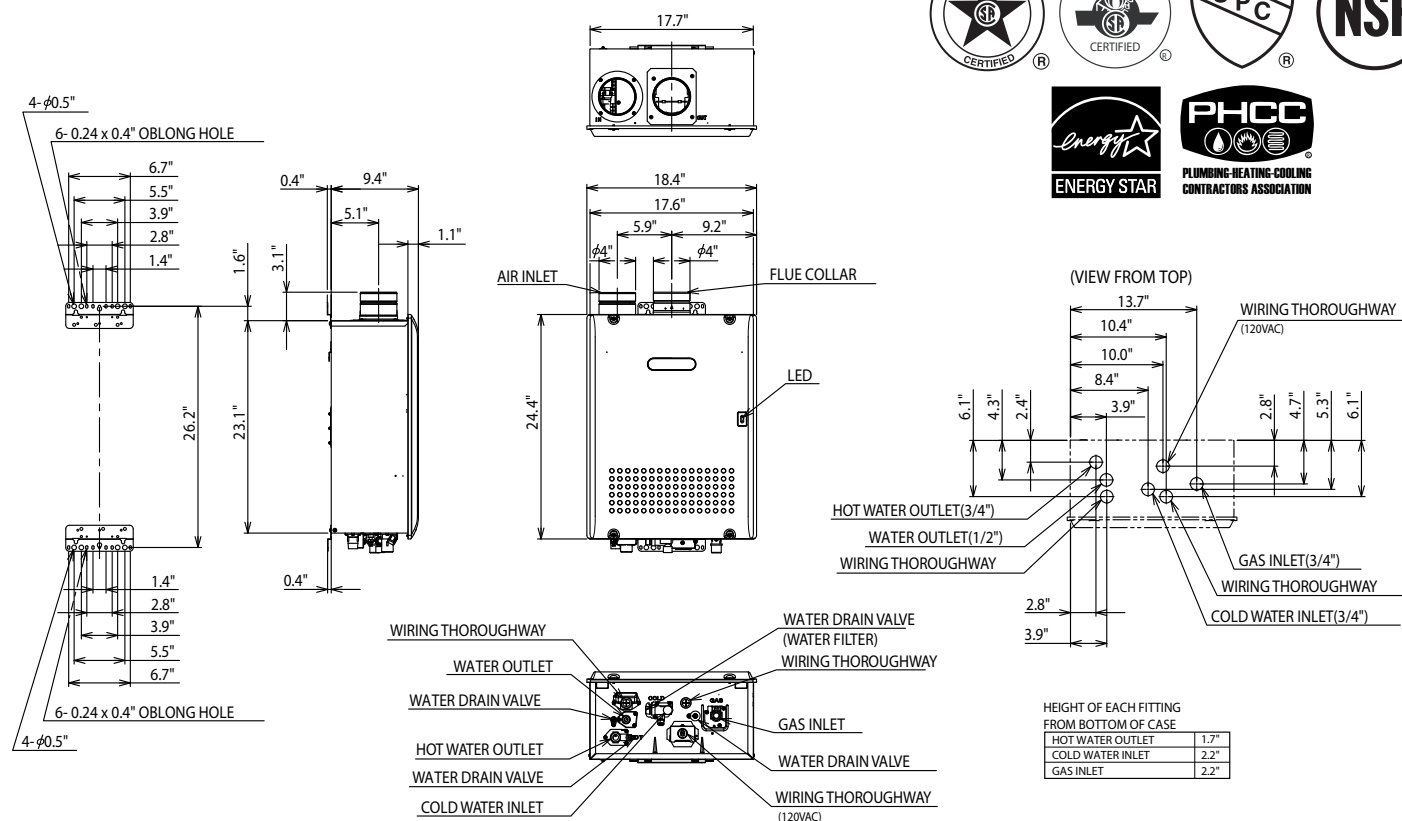


# Model N-0841MC-DV Condensing Tankless Water Heater

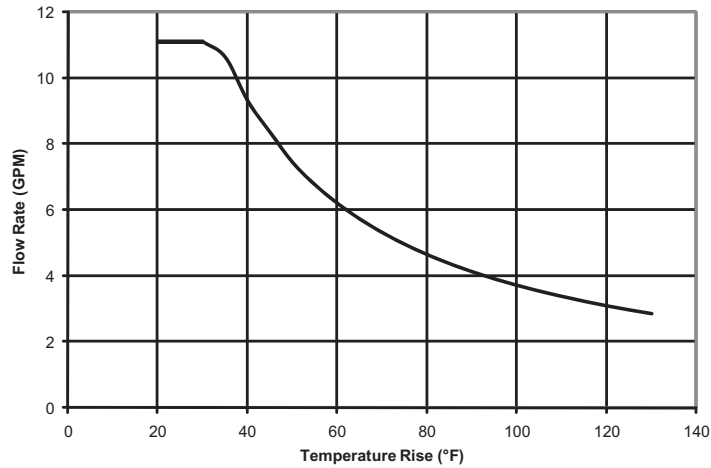


\* This model is eligible for a \$300 Federal tax credit when installed between January 1 through December 31, 2009 (Residential installations only)

Item	Specification	
Model Name	N-0841MC-DV	
Type	Installation	Indoor, Wall Hung
	Air Supply/Exhaust	Direct Vent (Sealed Combustion)
Ignition	Direct Ignition	
Operating Water Pressure	15 - 150 PSI	
Minimum Flow Rate	0.5 GPM	
Gas Supply Pressure	NG : 4.0" - 10.5" LP : 8.0" - 14.0"	
Dimensions	24.4"(Height) x 18.4"(Width) x 9.4"(Depth)	
Weight	73 (pounds)	
Water Holding Capacity	0.5 Gallon	
Connection Sizes	Water Inlet	3/4"
	Hot Water Outlet	3/4"
	Gas Inlet	3/4"
	Condensate Drain	1/2"
Power	Supply	120 VAC (60Hz)
	Consumption	NG: 115W LP: 120W Freeze Prevention 213W
Material	Casing	Stainless Steel
	Flue Collar	Stainless Steel
	Heat Exchanger	Copper Sheetting, Copper Tubing (Primary), Stainless Steel (Secondary)
Safety Devices	Flame Rod, Thermal Fuse, Lightning Protection Device (ZNR), Overheat Prevention Device, Freezing Prevention Device, Fan Rotation Detector, Neutralizer Overfill Sensor	
Included Accessories	Remote Controller, Remote Controller Cord, Anchoring Screws, Condensate Neutralizer	
Optional Accessories	Isolation Valves (#IK-WV-4), Outdoor Vent Cap (#VC-4C), Remote Controller Outdoor Junction Box (#RC-OJB), ScaleShield (#SS-HB-1), Quick-Connect Cable (#QC-1M), Multi-System Controller (#SC-201-6M, -12M, -24M)	

# Model N-0841MC-DV Product Performance

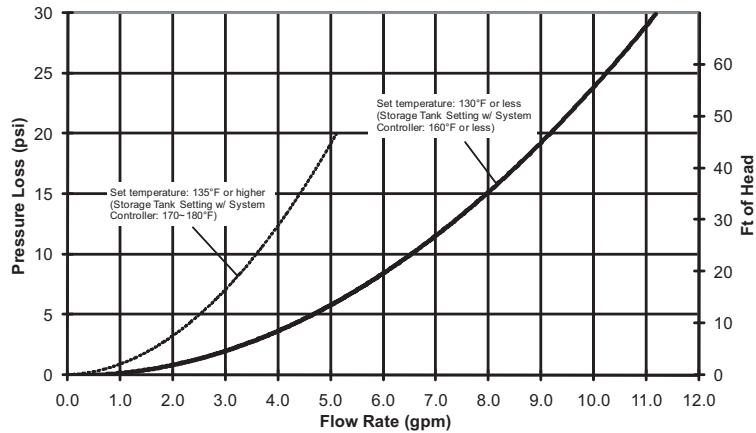
## Flow Rates



Temperature Rise (°F)	20	30	40	45	50	60	70	80	90	100	110	120	130
Flow Rate (GPM)	11.1	11.1	9.3	8.4	7.4	6.2	5.3	4.6	4.1	3.7	3.4	3.1	2.9

\*For peak flow rates in shaded areas, contact Noritz for proper setting.

## Pressure Loss



Item		Maximum Performance	Minimum Performance
Gas Consumption	NG	199,900 btuh	11,000 btuh
	LP	199,900 btuh	11,000 btuh
Thermal Efficiency		NG: 93.3% LP: 93.9%	
Energy Factor		NG: 0.92 LP: 0.94	
Hot Water Capacity	35°F Rise	10.6 Gal/min.	
	45°F Rise	8.4 Gal/min.	
	77°F Rise	4.8 Gal/min.	
	100°F Rise	3.7 Gal/min.	
Capacity Range		0.5 - 11.1 Gal/min.	
Temperature Settings		100-150°F (In 5°F intervals), 160, 170, 180°F (14 Options)	
Default Temperature Options		120, 130, 140, 180°F (Default is 120°F)	
Features		Quick-Connect (2 units), Multi-System (Up to 24 units), Pump Control, Temperature Lockout, High Elevation Adjustment	
Warranty		12/5- Residential, 3/5- Commercial or Circulation Use	
Approvals		CSA, UPC, NSF, Low NOx Approved By SCAQMD, Suitable for Installation in a Manufactured (Mobile) Home	

Noritz America reserves the right to discontinue, or change at any time, the designs and/or specifications of its products without notice.