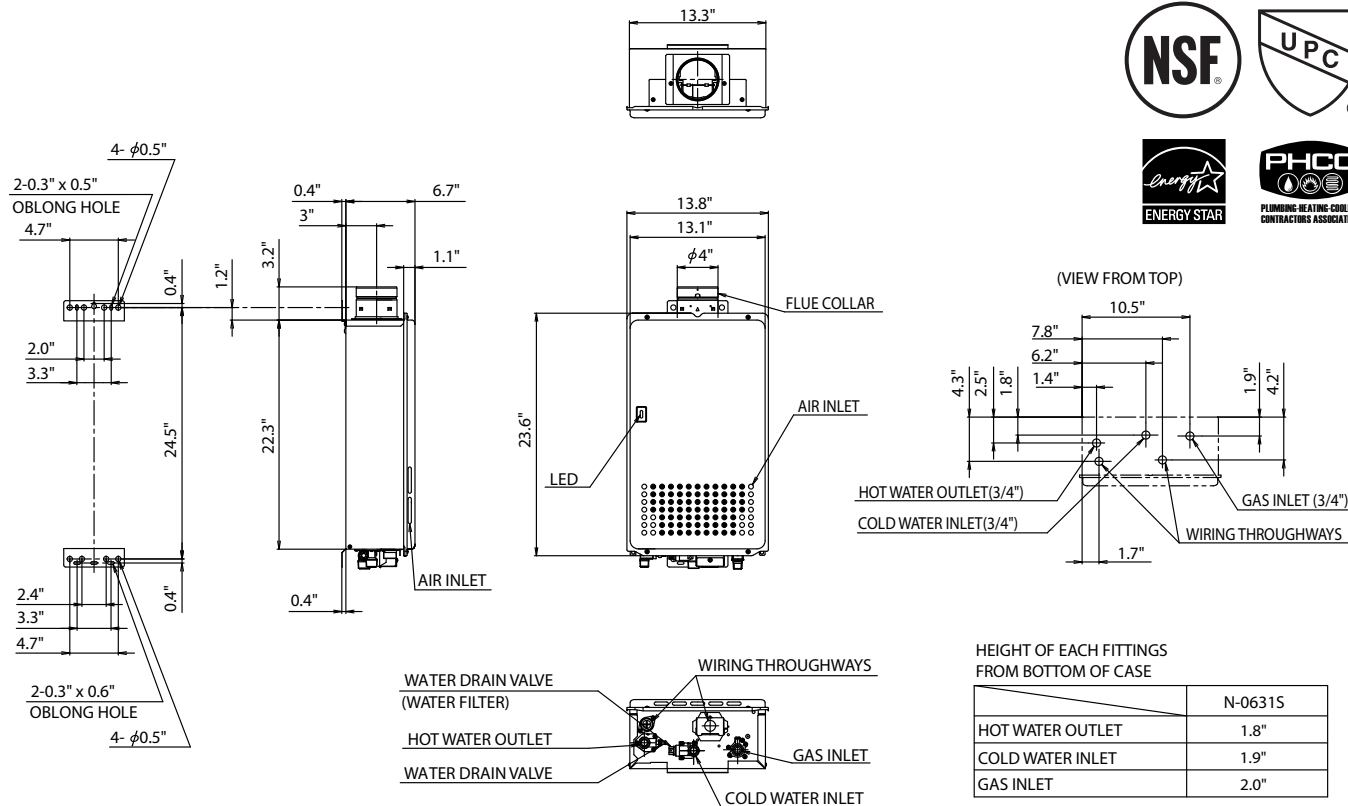


Model N-0631S Tankless Water Heater



* This model is eligible for the Federal tax credit of up to 30% of the water heater and installation costs (up to \$1,500) when installed in a residence between 1/1/2009 through 12/31/2010.

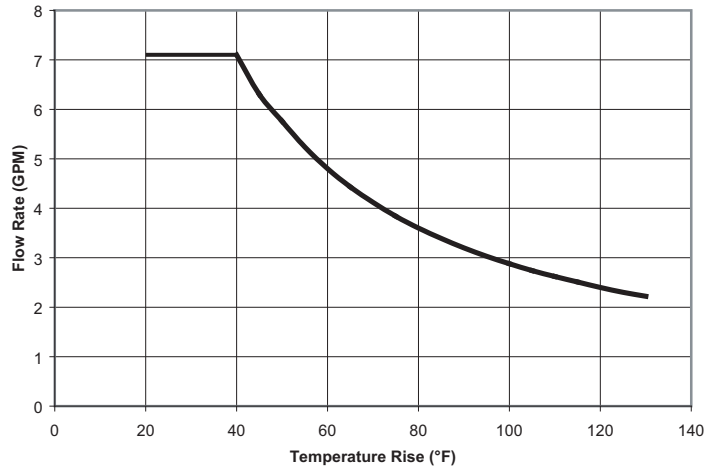
Item	Specification
Model Name	N-0631S
Type	Indoor/Outdoor, Wall Hung Air Supply/Exhaust Power Vented
Ignition	Direct Ignition
Operating Water Pressure	15 - 150 PSI
Minimum Flow Rate	0.5 GPM
Gas Supply Pressure	NG : 4.0" - 10.5" LP : 8.0" - 14.0"
Dimensions	23.6"(Height) x 13.8"(Width) x 6.7"(Depth)
Weight	41 (pounds)
Water Holding Capacity	0.2 Gallon
Connection Sizes	Water Inlet 3/4" Hot Water Outlet 3/4" Gas Inlet 3/4"
Power	Supply 120VAC(60Hz) Consumption NG: 59W LP: 66W Freeze Prevention 141W
Material	Casing Zincified Steel Plate / Polyester Coating Flue Collar Stainless Steel Heat Exchanger Copper Sheetting, Copper Tubing
Safety Devices	Flame Rod, Thermal Fuse, Lightning Protection Device (ZNR), Overheat Prevention Device, Freezing Prevention Device, Fan Rotation Detector
Included Accessories	Anchoring Screws
Optional Accessories	Isolation Valves (#IK-WV-4), Outdoor Vent Cap (#VC-4-1), Pipe Cover (#PC-1S), Remote Controller (#RC-7649M), Remote Controller Cord (#RC-CORD10), Remote Controller Outdoor Junction Box (#RC-OJB), ScaleShield (#SS-HB-1)

NORITZ AMERICA CORPORATION

11160 Grace Avenue, Fountain Valley, CA 92708 Tel. 1-866-7NORITZ www.noritz.com

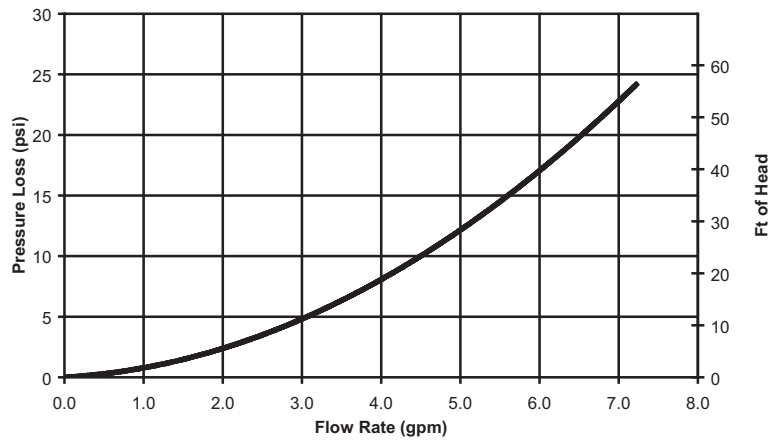
Model N-0631S Product Performance

Flow Rates



Temperature Rise (°F)	20	30	40	45	50	60	70	80	90	100	110	120	130
Flow Rate (GPM)	7.1	7.1	7.1	6.3	5.8	4.8	4.1	3.6	3.2	2.9	2.6	2.4	2.2

Pressure Loss



Item		Maximum Performance	Minimum Performance
Gas Consumption	NG	180,000 btuh	25,000 btuh
	LP	180,000 btuh	25,000 btuh
Thermal Efficiency		83%	
Energy Factor		NG: 0.83 LP: 0.83	
Hot Water Capacity	35°F Rise	7.1 Gal./min.	
	45°F Rise	6.3 Gal./min.	
	77°F Rise	3.7 Gal./min.	
	100°F Rise	2.9 Gal./min.	
Capacity Range		0.5 - 7.1 Gal./min.	
Temperature Settings (with Controller)		100-150°F (In 5°F intervals) ,160°F (12 Options)	
Default Temperature Options		120, 130, 140°F (Default is 120°F)	
Features		Temperature Lockout, High Elevation Adjustment	
Warranty		12/5- Residential, 3/5- Commercial or Circulation Use	
Approvals		CSA, UPC, NSF, Low NOx Approved By SCAQMD	

Noritz America reserves the right to discontinue, or change at any time, the designs and/or specifications of its products without notice.