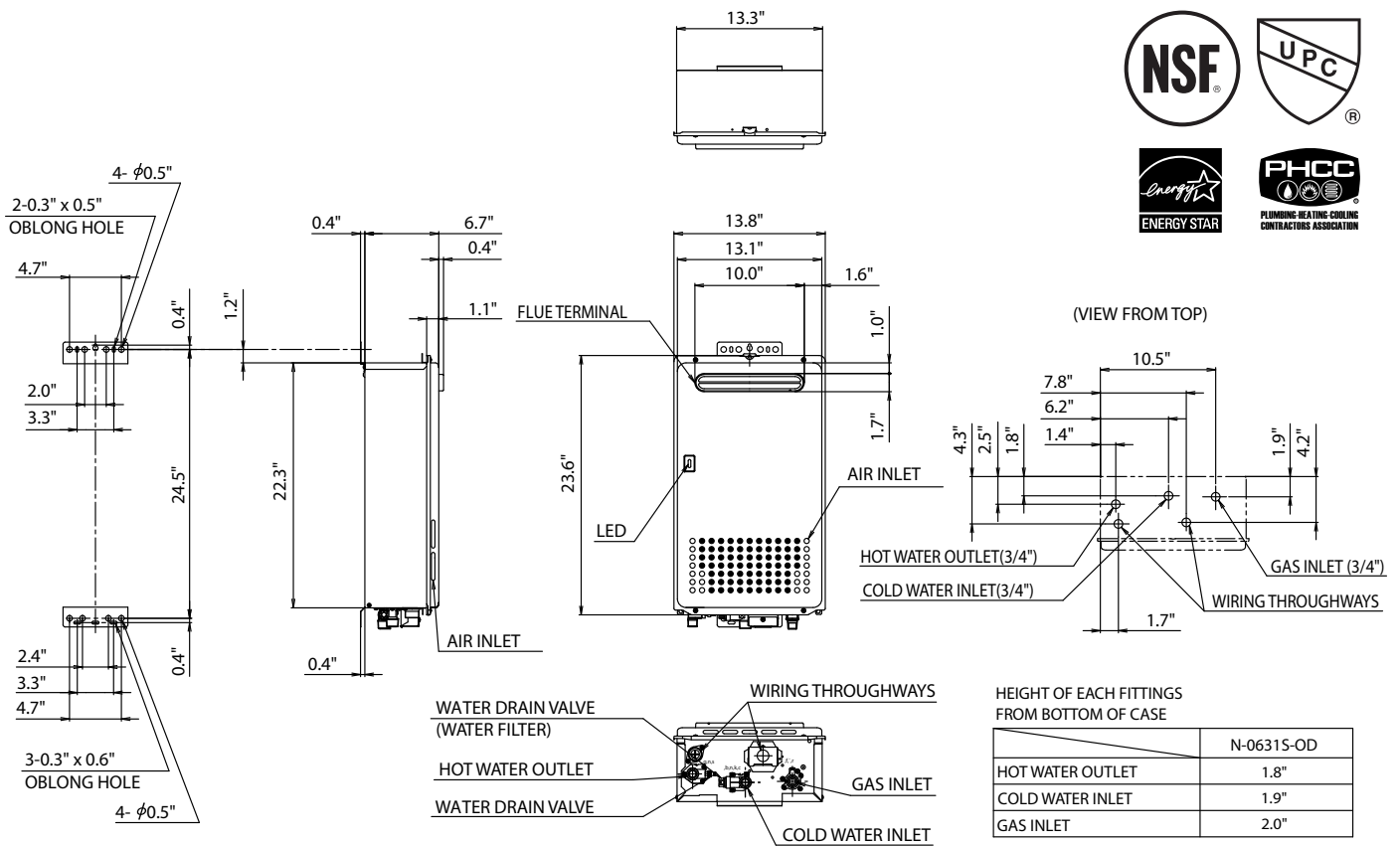


Model N-0631S-OD Tankless Water Heater

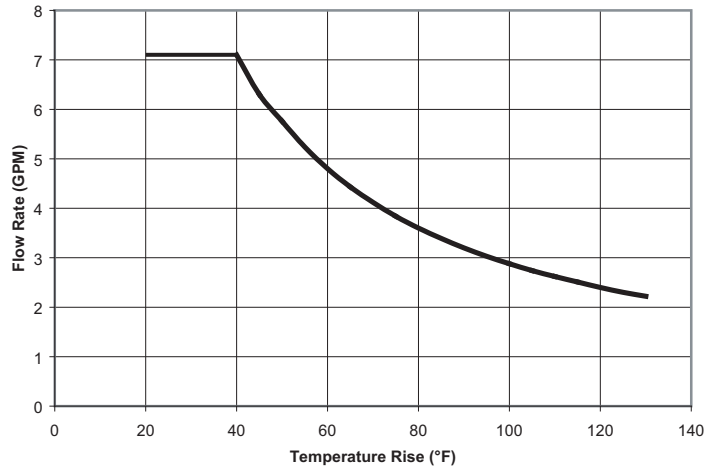


* This model is eligible for the Federal tax credit of up to 30% of the water heater and installation costs (up to \$1,500) when installed in a residence between 1/1/2009 through 12/31/2010.

Item	Specification	
Model Name	N-0631S-OD	
Type	Installation	Outdoor, Wall Hung
	Air Supply/Exhaust	Power Vented
Ignition	Direct Ignition	
Operating Water Pressure	15 - 150 PSI	
Minimum Flow Rate	0.5 GPM	
Gas Supply Pressure	NG : 4.0" - 10.5" LP : 8.0" - 14.0"	
Dimensions	23.6"(Height) x 13.8"(Width) x 6.7"(Depth)	
Weight	41 (pounds)	
Water Holding Capacity	0.2 Gallon	
Connection Sizes	Water Inlet	3/4"
	Hot Water Outlet	3/4"
	Gas Inlet	3/4"
Power	Supply	120VAC(60Hz)
	Consumption	NG: 46W LP: 50W Freeze Prevention 141W
Material	Casing	Zincified Steel Plate / Polyester Coating
	Flue Collar	Stainless Steel
	Heat Exchanger	Copper Sheetting, Copper Tubing
Safety Devices	Flame Rod, Thermal Fuse, Lightning Protection Device (ZNR), Overheat Prevention Device, Freezing Prevention Device, Fan Rotation Detector	
Included Accessories	Anchoring Screws	
Optional Accessories	Isolation Valves (#IK-WV-4), Recess Box (RB-6), Pipe Cover (#PC-1S), Remote Controller (#RC-7649M), Remote Controller Cord (#RC-CORD10), Remote Controller Outdoor Junction Box (#RC-OJB), ScaleShield (#SS-HB-1)	

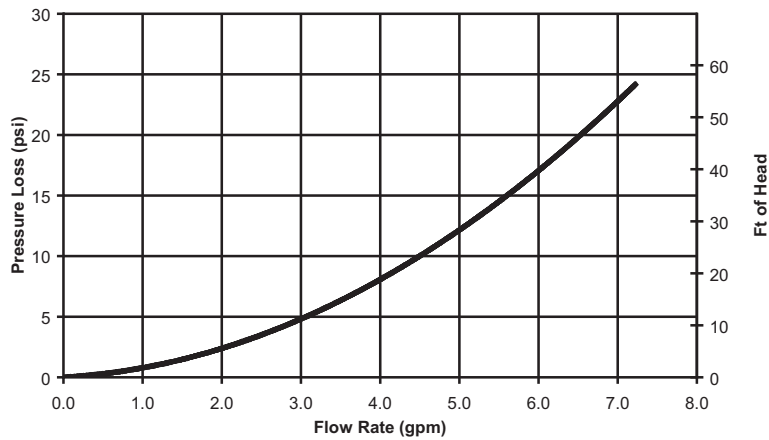
Model N-0631S-OD Product Performance

Flow Rates



Temperature Rise (°F)	20	30	40	45	50	60	70	80	90	100	110	120	130
Flow Rate (GPM)	7.1	7.1	7.1	6.3	5.8	4.8	4.1	3.6	3.2	2.9	2.6	2.4	2.2

Pressure Loss



Item		Maximum Performance	Minimum Performance
Gas Consumption	NG	180,000 btuh	25,000 btuh
	LP	180,000 btuh	25,000 btuh
Thermal Efficiency		83%	
Energy Factor		NG: 0.82 LP: 0.83	
Hot Water Capacity	35°F Rise	7.1 Gal/min.	
	45°F Rise	6.3 Gal/min.	
	77°F Rise	3.7 Gal/min.	
	100°F Rise	2.9 Gal/min.	
Capacity Range		0.5 - 7.1 Gal/min.	
Temperature Settings (with Controller)		100-150°F (In 5°F intervals) ,160°F (12 Options)	
Default Temperature Options		120, 130, 140°F (Default is 120°F)	
Features		Temperature Lockout, High Elevation Adjustment	
Warranty		12/5- Residential, 3/5- Commercial or Circulation Use	
Approvals		CSA, UPC, NSF, Low NOx Approved By SCAQMD, Suitable for Installation in a Manufactured (Mobile) Home	

Noritz America reserves the right to discontinue, or change at any time, the designs and/or specifications of its products without notice.