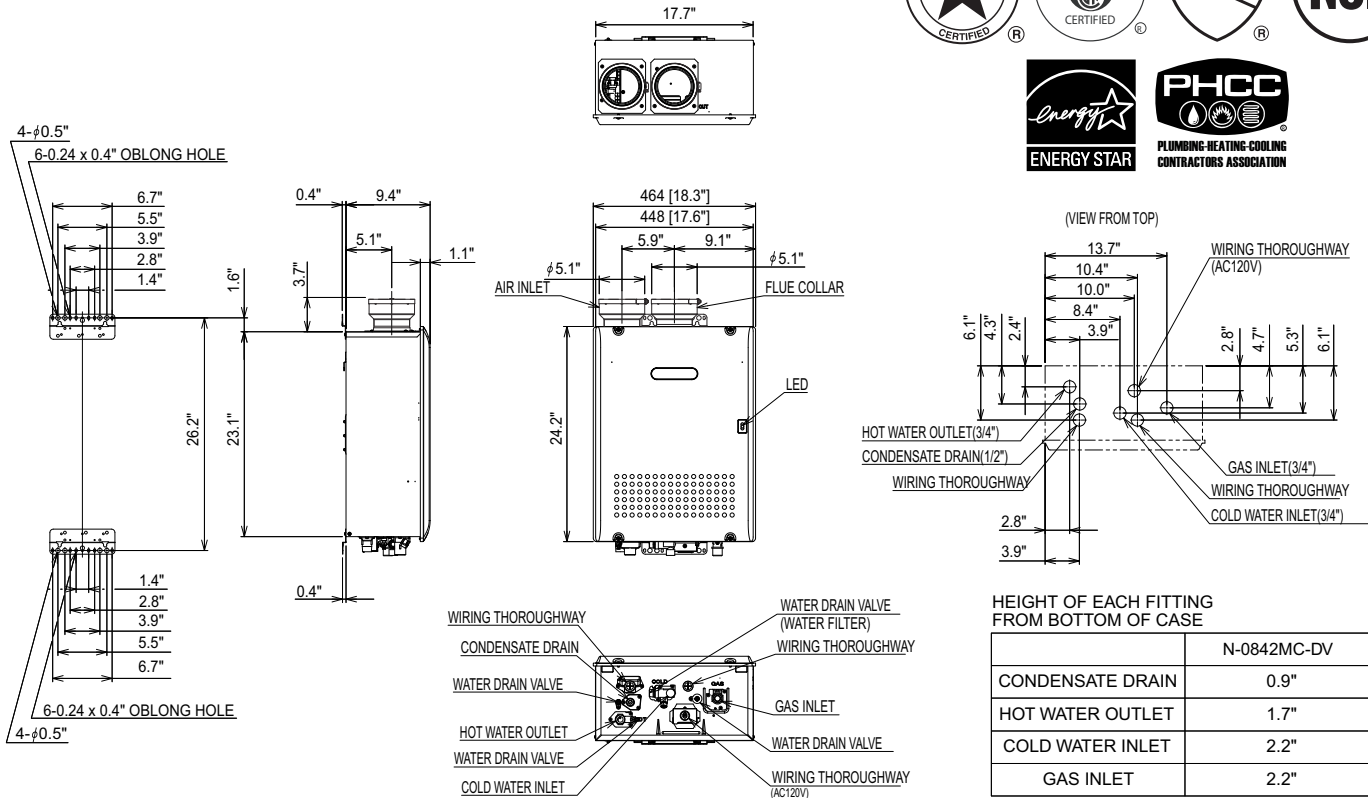


Model N-0842MC-DV Condensing Tankless Water Heater

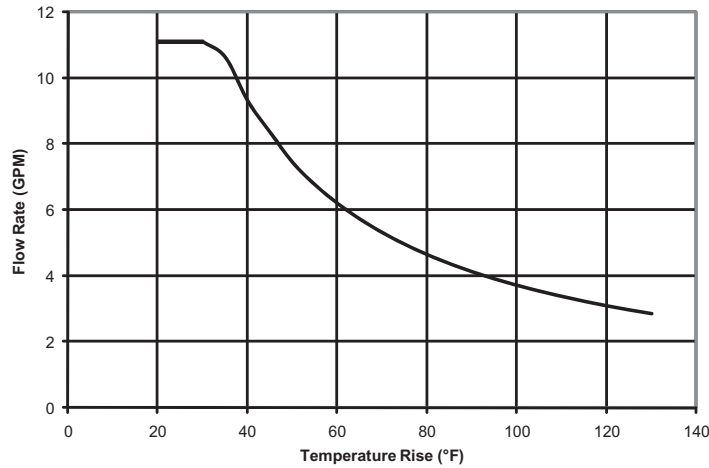


* This model is eligible for the Federal tax credit of up to 30% of the water heater and installation costs (up to \$1,500) when installed in a residence between 1/1/2009 through 12/31/2010.

Item	Specification
Model Name	N-0842MC-DV
Type	Indoor, Wall Hung
Installation	Direct Vent (Sealed Combustion), 4" Intake and Exhaust (PVC/CPVC Only)
Air Supply/Exhaust	
Ignition	Direct Ignition
Operating Water Pressure	15 - 150 PSI
Minimum Flow Rate	0.5 GPM
Gas Supply Pressure	NG : 4.0" - 10.5" LP : 8.0" - 14.0"
Dimensions	24.4"(Height) x 18.4"(Width) x 9.4"(Depth)
Weight	74 (pounds)
Water Holding Capacity	0.5 Gallon
Connection Sizes	
Water Inlet	3/4"
Hot Water Outlet	3/4"
Gas Inlet	3/4"
Condensate Drain	1/2"
Power	
Supply	120 VAC (60Hz)
Consumption	NG: 115W LP: 120W Freeze Prevention 213W
Material	
Casing	Zincified Steel Plate/Polyester Coating
Flue Collar	Stainless Steel
Heat Exchanger	Copper Sheeting, Copper Tubing (Primary), Stainless Steel (Secondary)
Safety Devices	Flame Rod, Thermal Fuse, Lightning Protection Device (ZNR), Overheat Prevention Device, Freezing Prevention Device, Fan Rotation Detector, Neutralizer Overfill Sensor
Included Accessories	Remote Controller, Remote Controller Cord, Anchoring Screws, Condensate Neutralizer, 4" PVC/CPVC Adapter
Optional Accessories	Isolation Valves (#IK-WV-4), ScaleShield (#SS-HB-1), Quick-Connect Cable (#QC-1M), Multi-System Controller (#SC-201-6M, -12M, -24M), Birdscreen (#VT4-PVCS), Pipe Cover (#PC-3S)

Model N-0842MC-DV Product Performance

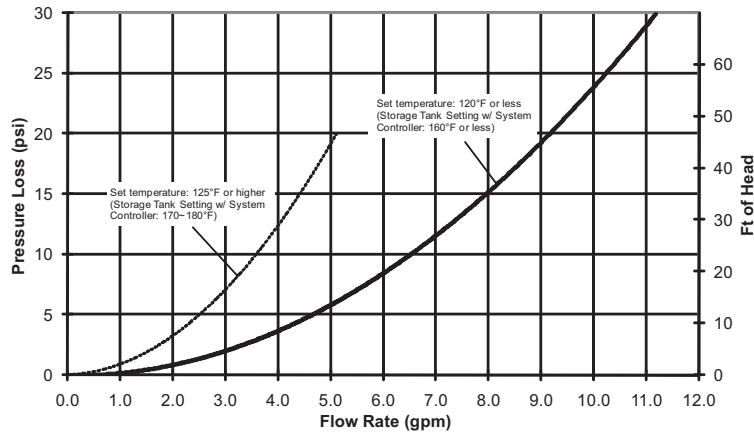
Flow Rates



Temperature Rise (°F)	20	30	40	45	50	60	70	80	90	100	110	120	130
Flow Rate (GPM)	11.1	11.1	9.3	8.4	7.4	6.2	5.3	4.6	4.1	3.7	3.4	3.1	2.9

*For peak flow rates in shaded areas, contact Noritz for proper setting.

Pressure Loss



Item		Maximum Performance	Minimum Performance
Gas Consumption	NG	199,900 btuh	11,000 btuh
	LP	199,900 btuh	11,000 btuh
Thermal Efficiency		NG: 93.3% LP: 93.9%	
Energy Factor		NG: 0.92 LP: 0.94	
Hot Water Capacity	35°F Rise	10.6 Gal/min.	
	45°F Rise	8.4 Gal/min.	
	77°F Rise	4.8 Gal/min.	
	100°F Rise	3.7 Gal/min.	
Capacity Range		0.5 - 11.1 Gal/min.	
Temperature Settings		100-150°F (In 5°F intervals), 160, 170, 180°F (14 Options)	
Default Temperature Options		120, 130, 140, 180°F (Default is 120°F)	
Features		Quick-Connect (2 units), Multi-System (Up to 24 units), Pump Control, Temperature Lockout, High Elevation Adjustment	
Warranty		12/5- Residential, 3/5- Commercial or Circulation Use	
Approvals		CSA, UPC, NSF, Low NOx Approved By SCAQMD, Suitable for Installation in a Manufactured (Mobile) Home	

Noritz America reserves the right to discontinue, or change at any time, the designs and/or specifications of its products without notice.