

Solar Heat Exchanger / Solar Tank

SOLARAIDE™ HE



BOSCH

Invented for life



SOLARAIDE™ HE

Solar Heat Exchanger / Solar Tank



Available in 80 and 120 Gallon Models

- ▶ Specifically Engineered for Installation with Residential Indirect Solar Systems
- ▶ Temperature and Pressure Relief Valve Included
- ▶ Collector Feed and Return Fittings Located at Front of Tank for Convenient Installation
- ▶ Insulated Tank Design for Better Heat Retention
- ▶ High Efficiency Heating Element
- ▶ Tank Lining Resists Corrosion and Prolongs Tank Life
- ▶ Heat Exchanger: Copper Tubing Wrapped Around and Secured to the Tank
- ▶ Double Wall, Vented Design for Positive Leak Detection
- ▶ Cold Water Inlet Brings Cold Water to Tank Bottom to Prevent Mixing with Heated Water
- ▶ Anode Rod Equalizes Aggressive Water Action for Prolonged Tank Life
- ▶ Brass Drain Valve
- ▶ Cold Water Inlet, Hot Water Outlet, Relief Valve and Anode Rod at Top of Tank for Easy Access and Fast, Economical Installation
- ▶ Automatic Temperature Control
- ▶ 6-Year Limited Tank and Parts Warranty

Use 3/16" one hole strap (not supplied) to secure temperature sensor against tank using threaded post and nut.

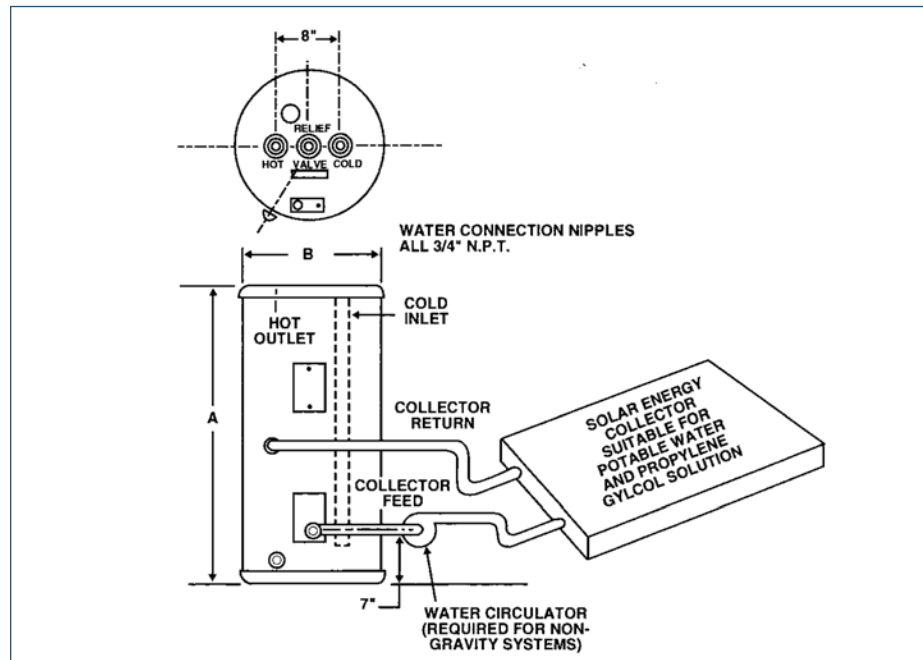


COPPER COIL DATA (Type L Copper)

Maximum Pressure = 150 PSI
 Maximum Temperature = 185°F
 Tube I.D. = 5/8"

Solaraide HE Tank Capacity	Coil Capacity Gallons	Length of Tubing Around Tank (Ft)
80 Gallons	2.2	120
120 Gallons	2.6	143

Flow Rate	Head Loss (Feet)	
	80 Gallon	120 Gallon
1 GPM	1.3	1.6
2 GPM	4.8	5.7
3 GPM	10.0	12.0



Description			Roughing in Dimensions			Energy Information
Gal Cap.	Model Number	Element Wattage Upper	Height A	Diameter B	Approx. Shipping WT.	Approx R-Factor
80	SOL-RET80	4500 W*	58 3/4"	24 1/2"	222 lbs.	R-17.3
120	SOL-RET120	4500 W*	62"	28 3/4"	380 lbs.	R-17.3

* Heaters furnished with standard 240 volt AC, single phase non-simultaneous wiring and 4500 watt element. To prevent corrosion, proper pH levels in transfer fluid must be maintained. Solaraide models meet all current state requirements for solar storage tanks. The tanks are glass lined and are designed to operate up to 150 PSI. Solaraide is a trademark of Rheem and is used with permission.

Bosch Thermotechnology Corp.
 50 Wentworth Avenue, Londonderry, NH 03053
 Tel: 1-866-642-3198 • Fax: 1-603-584-1681
 www.boschsolar.com



BOSCH
 Invented for life