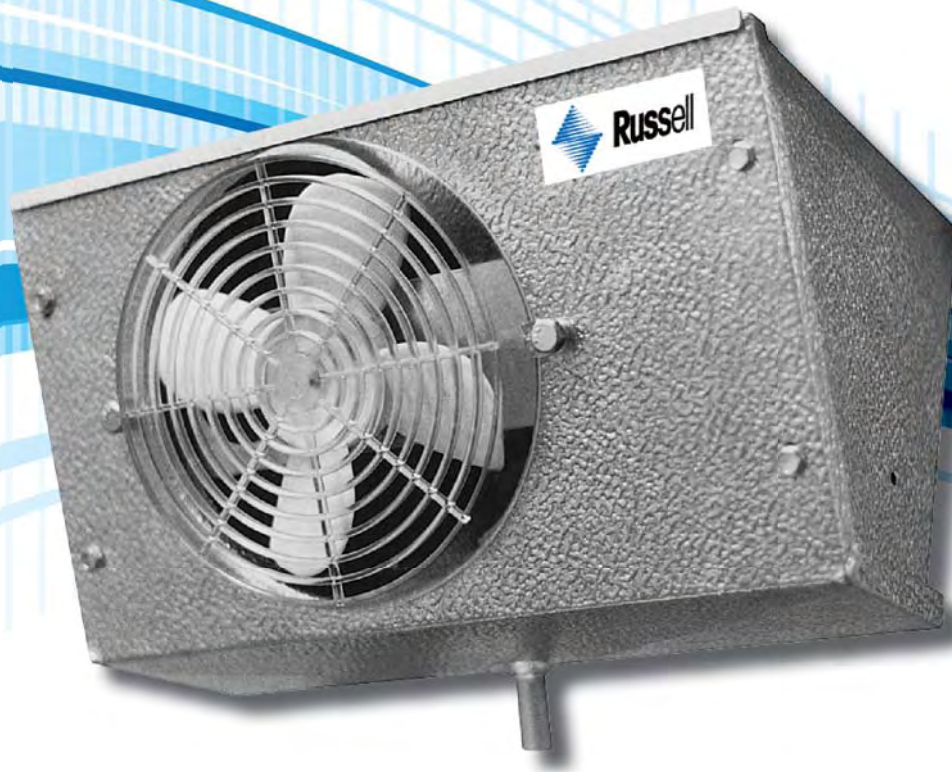




Flex-Temp
**REACH - IN
UNIT COOLER**



The Flex-Temp reach-in coil is designed to meet a number of application needs. Its triangular geometry allows for installation in areas with limited available space.

Flex-Temp is well suited for under-counter refrigerators, reach-in back bars and other similar enclosures.



REACH - IN UNIT COOLER

Performance and Electrical Data

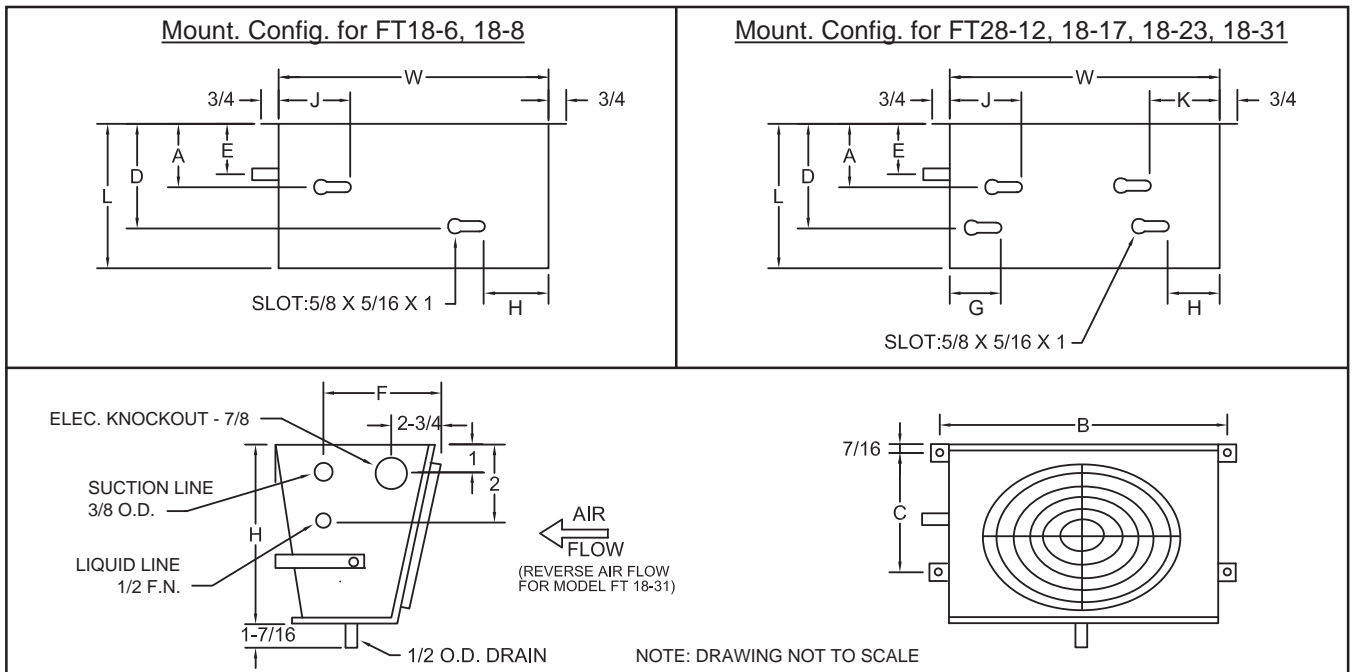
| MODEL NUMBER | CAPACITY (Btu/hr) | | | CFM | MOTOR | | | CONNECTIONS (in.) | | | APPRX SHIP WT. (LBS) |
|--------------|-------------------|---------|---------|-----|-------|-----------|------------|-------------------|---------|--------|----------------------|
| | 10°F TD | 15°F TD | 20°F TD | | QTY | AMPS 115V | AMPS 230/1 | LIQUID | SUCTION | DRAIN | |
| FT18-6 | 650 | 975 | 1300 | 150 | 1 | 0.73 | 0.37 | 1/2 F.N. | 3/8 OD | 1/2 OD | 9 |
| FT18-8 | 800 | 1200 | 1600 | 140 | 1 | 0.73 | 0.37 | 1/2 F.N. | 3/8 OD | 1/2 OD | 9 |
| FT28-12 | 1200 | 1800 | 2400 | 300 | 2 | 1.5 | 0.73 | 1/2 F.N. | 3/8 OD | 1/2 OD | 14 |
| FT18-17 | 1700 | 2550 | 3400 | 370 | 1 | 1.1 | 0.55 | 1/2 F.N. | 3/8 OD | 1/2 OD | 15 |
| FT18-23 | 2300 | 3450 | 4600 | 610 | 1 | 2.0 | 1.0 | 1/2 F.N. | 3/8 OD | 1/2 OD | 20 |
| FT18-31 | 3100 | 4650 | 6200 | 590 | 1 | 2.0 | 1.0 | 1/2 F.N. | 3/8 OD | 1/2 OD | 23 |

* All dimensions are in inches.

Physical Data

| MODEL NUMBER | DIMENSIONS (in) | | | | | | | | | | | | |
|--------------|-----------------|---------|--------|--------|--------|-------|--------|-------|---------|-------|-------|-------|-------|
| | H | L | W | A | B | C | D | E | F | G | H | J | K |
| FT18-6 | 6-3/4 | 8-15/16 | 12-1/2 | 4-5/16 | 13-1/8 | 4-5/8 | 5-5/16 | 4-1/4 | 3-15/16 | — | 2-1/2 | 2-1/2 | — |
| FT18-8 | 6-3/4 | 8-15/16 | 12-1/2 | 4-5/16 | 13-1/8 | 4-5/8 | 5-5/16 | 4-1/4 | 3-15/16 | — | 2-1/2 | 2-1/2 | — |
| FT28-12 | 7-3/4 | 8-15/16 | 18 | 4-5/16 | 18-3/4 | 4-5/8 | 5-5/16 | 4-1/4 | 4-1/16 | 1-1/2 | 1-1/2 | 2-1/2 | 2-1/2 |
| FT18-17 | 9-5/8 | 10-9/16 | 14 | 5-1/4 | 14-5/8 | 5-1/4 | 9 | 4-3/4 | 5-1/2 | 1-1/2 | 1-1/2 | 2-1/2 | 2-1/2 |
| FT18-23 | 11-5/8 | 13 | 16-3/4 | 5-1/4 | 17-1/2 | 7 | 11-1/2 | 4-1/2 | 5-5/16 | 1-1/2 | 1-1/2 | 2-1/2 | 2-1/2 |
| FT18-31 | 11-5/8 | 13 | 16-3/4 | 5-1/4 | 17-1/2 | 7 | 11-1/2 | 4-1/2 | 5-5/16 | 1-1/2 | 1-1/2 | 2-1/2 | 2-1/2 |

* All dimensions are in inches.



Due to continuing product development, specifications are subject to change without notice.

*Available with protective coil coating.