



10 SEER GAS/ELECTRIC PACKAGED AIR CONDITIONING 2 THROUGH 5 TON



PGB Series

- Cooling capacities from 24,000 to 58,000 BTUH.
- Heating input rates from 46,000 to 140,000 BTUH.

Description / Application

- Self contained heating and cooling unit.
- Side by side or downflow applications.
- Outdoor package unit for ground or rooftop application.

Accessories

- L.P. Gas conversion kits.
- Room thermostat.
- High & low pressure switch kits.
- Low ambient kit.
- Roof curb.
- Concentric converter.
- Economizer (horizontal and vertical).
- Manual fresh air damper (0-25%).
- Motorized fresh air damper (0-25%)
- Rectangular to round converter.
- Downflow filter rack.

Standard Features

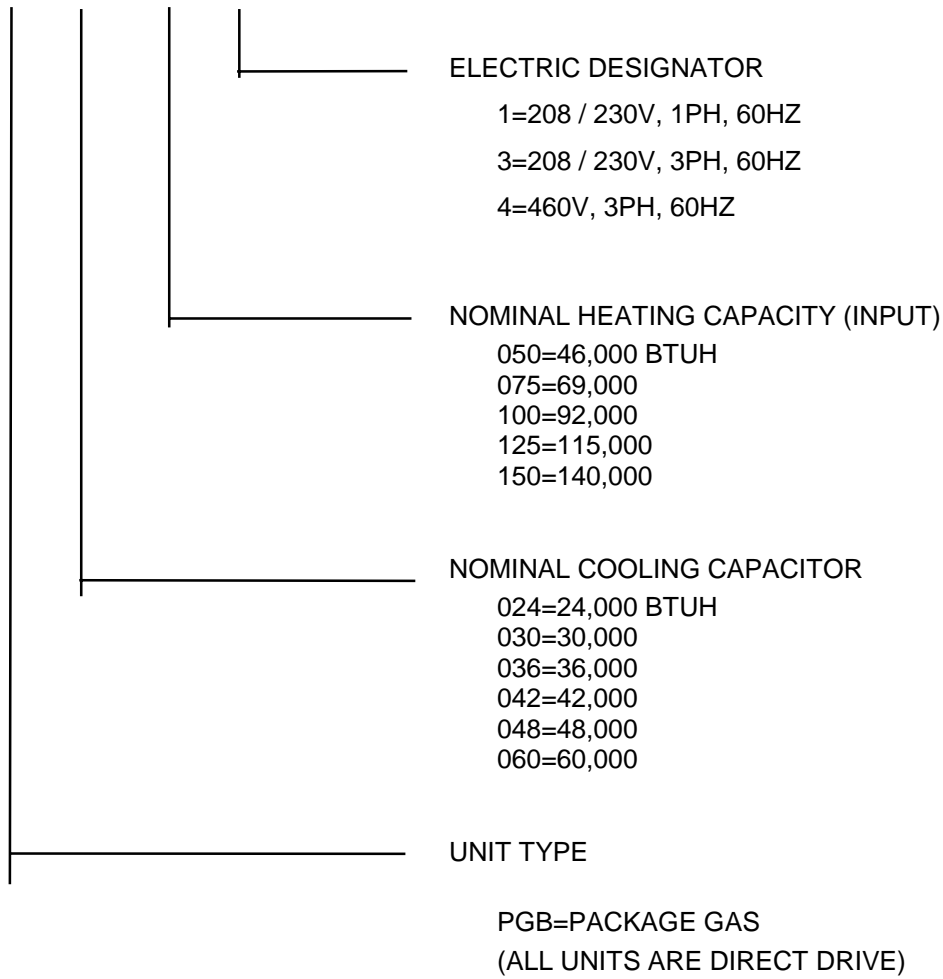
- Two-speed evaporator blower motor.
- Copper tube - aluminum fin coils.
- Quiet operating top condenser discharge grille.
- Totally enclosed, permanently lubricated condenser fan motor.
- Hermetically sealed compressor with internal relief valve.
- Fully charged R-22 system.
- High efficiency performance.
- Liquid line filter drier.
- Power assisted combustion requiring no vent cap.
- Bottom handling rails.
- Aluminized steel heat exchanger cells.
- Water shed base.
- All models meet Cal. Nox. emissions standards.
- Hot surface pilot ignition system.

Cabinet Construction

- Powder paint finish with 500 hr. salt spray approval.
- Fully insulated with blankets of fiberglass.
- Convenient access panels.

MODEL IDENTIFICATION

PGB 036 050 - 1



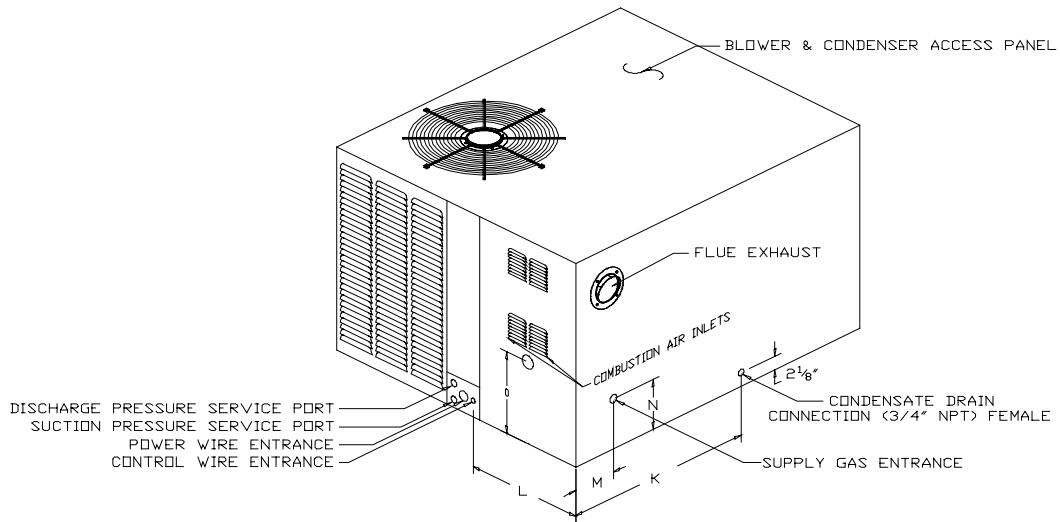


FIGURE 1

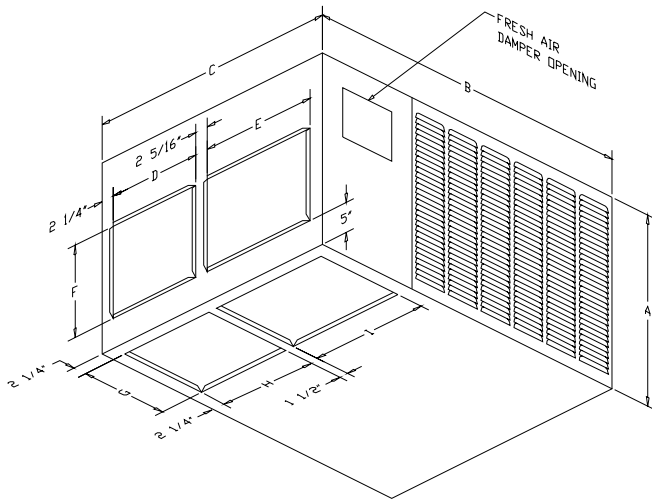


FIGURE 2

	CHASSIS #1	CHASSIS #2	CHASSIS #3
DIMENSIONS (INCHES)	PGB024050		PGB042125
	PGB024075		PGB048075
	PGB030050	PGB030100	PGB048100
	PGB030075	PGB036100	PGB048125
	PGB036050	PGB042075	PGB048150
	PGB036075	PGB042100	PGB060100
A	31 1/8	31 1/8	33 5/8
B	52	52	55 3/8
C	38 3/4	43 3/4	58 1/8
D	13 3/8	16 3/8	24 5/8
E	18 3/8	20 3/8	26 5/8
F	15	15	17
G	15 1/4	15 1/4	17 1/4
H	13 3/4	16 3/4	25
I	18 3/4	20 3/4	27
K	30	30	32 1/2
L	16 3/8	18 3/8	27 3/4
M	7	7	7 1/4
N	7 5/8	7 5/8	10 1/8
O	12 3/8	12 3/8	14 7/8

ACCESSORY MODEL NUMBERS

ALL PGB MODELS	MODEL NUMBERS
LP Conversion Kit Honeywell HSP	LPM-01
Room Thermostat	CHT18-60
High & Low Pressure Switch Kit	HLPK-01
Low Ambient Kit	LA-01

PGB - DATA AND SPECIFICATION

	PGB024050-1	PGB024075-1	PGB030050-1	PGB030075-1	PGB030100-1	PGB036050-1A
Total Cooling - BTUH	24000	24000	29000	29000	30000	34200
Sens. Cooling - BTUH	18200	18200	22000	22000	22500	24600
Cooling CFM Nominal	900	900	1050	1050	1050	1200
SEER (2)	10.0	10.0	10.0	10.0	10.0	10.0
EER_a (3)	-	-	-	-	-	-
Sound Rating (2)	8.2	8.2	8.2	8.2	8.2	8.2
Heating Input	46000	69000	46000	69000	92000	46000
Heating Capacity	37700	56600	37700	56600	75400	37700
Output Capacity	-	-	-	-	-	-
AFUE (1)	80.0	80.0	80.0	80.0	80.0	80.0
Outdoor S. S. Eff.	-	-	-	-	-	-
California SEER	74.8	76.4	74.8	76.0	76.5	74.8
Temp. Rise Range	30-60	50-80	25-55	40-70	55-85	20-50
Indoor Blower						
Type	DD	DD	DD	DD	DD	DD
Size - D x W	9 x 6	9 x 6	9 x 6	9 x 6	10 x 6	10 x 6
Motor H.P.	1/5	1/5	1/3	1/3	1/3	1/3
Evaporator Coil						
Face (ft²)	2.41	2.41	2.41	2.41	2.86	2.41
Fin / In	14	14	14	14	14	14
No. of Rows	3	3	3	3	3	4
Outdoor Fan						
Fan Dia. (in.)	18	18	18	18	20	18
Motor H.P.	1/6	1/6	1/6	1/6	1/6	1/6
Condenser Coil						
Face Area (ft²)	10.05	10.05	10.05	10.05	11.30	10.05
Fin / In.	19	19	19	19	19	19
No. of Rows	1	1	1	1	1	1
Electrical						
Ph	1	1	1	1	1	1
Volts	208/230	208/230	208/230	208/230	208/230	208/230
Compr. RLA	12.1	12.1	1408	14.8	14.8	17.3
Compr. LRA	57.0	57.0	73.0	73.0	76.0	89.0
Indoor Blw FLA.	1.7	1.7	304	3.4	3.4	2.6
Outdoor Blw FLA.	1.0	1.0	1.0	1.0	1.0	1.6
Min. Circuit Amp	17.9	17.9	22.9	22.9	22.9	26.8
Max. Fuse Size	25	25	35	35	35	40
Max HACR Breaker	20	20	30	30	30	40
Net Weight	360	370	360	370	385	365
Shipping Weight	370	380	370	380	395	365

PGB Models meet California NOx Requirements

- (1) In accordance with D.O.E. Test Procedures
- (2) Certified per ARI 210 and 270
- (3) BTU / Watt @ 80/67 F inside - 95 F outside air

BEFORE PURCHASING THIS APPLIANCE, READ IMPORTANT ENERGY COST AND EFFICIENCY INFORMATION AVAILABLE FROM YOUR RETAILER.

PGB - DATA AND SPECIFICATION

	PGB036075-1A	PGB036075-3A	PGB036100-1A	PGB042075-1	PGB042100-1	PGB042125-1
Total Cooling - BTUH	34200	34200	35000	40000	40000	40000
Sens. Cooling - BTUH	24600	24600	25200	30400	30400	30400
Cooling CFM Nominal	1200	1200	1200	1450	1450	1450
SEER (2)	10.0	10.0	10.0	10.0	10.0	10.0
EER_a (3)	-	-	-	-	-	-
Sound Rating (2)	8.2	8.2	8.2	8.4	8.4	8.4
Heating Input	69000	69000	92000	69000	92000	115000
Heating Capacity	56600	-	75400	56600	75400	94300
Output Capacity	-	56600	-	-	-	-
AFUE (1)	80.0	-	80.0	80.0	80.0	80.0
Outdoor S. S. Eff.	-	82.0	-	-	-	-
California SEER	75.2	75.2	75.2	74.3	75.5	76.2
Temp. Rise Range	35-65	35-65	55-85	30-60	45-75	45-75
Indoor Blower						
Type	DD	DD	DD	DD	DD	DD
Size - D x W	10 x 6	10 x 6	10 x 6	10 x 8	10 x 8	10 x 8
Motor H.P.	1/3	1/3	1/3	½	½	½
Evaporator Coil						
Face (ft²)	2.41	2.41	2.86	2.86	2.86	4.43
Fin / In	14	14	14	14	14	14
No. of Rows	4	4	3	4	4	3
Outdoor Fan						
Fan Dia. (in.)	18	18	20	20	20	22
Motor H.P.	1/6	1/6	¼	¼	¼	¼
Condenser Coil						
Face Area (ft²)	10.05	10.05	11.30	11.30	11.30	14.95
Fin / In.	19	19	19	19	19	19
No. of Rows	1	1	1	1	1	1
Electrical						
Ph	1	3	1	1	1	1
Volts	208/230	208/230	208/230	208/230	208/230	208/230
Compr. RLA	17.3	10.3	17.3	21.8	21.8	19.3
Compr. LRA	89.0	78.0	89.0	105.0	105.0	97.0
Indoor Blw FLA.	2.6	2.6	2.6	4.2	4.2	4.2
Outdoor Blw FLA.	1.6	1.6	1.8	1.6	1.6	1.6
Min. Circuit Amp	26.8	17.1	26.8	33.1	33.1	29.9
Max. Fuse Size	40	25	40	50	50	50
Max HACR Breaker	40	20	40	50	50	50
Net Weight	375	375	395	405	410	465
Shipping Weight	385	385	405	415	420	475

PGB Models meet California NOx Requirements

- (1) In accordance with D.O.E. Test Procedures
- (2) Certified per ARI 210 and 270
- (3) BTU / Watt @ 80/67 F inside - 95 F outside air

BEFORE PURCHASING THIS APPLIANCE, READ IMPORTANT ENERGY COST AND EFFICIENCY INFORMATION AVAILABLE FROM YOUR RETAILER.

PGB - DATA AND SPECIFICATION

	PGB048075-1	PGB048100-3	PGB048125-1	PGB048150-1	PGB048150-3	PGB060100-1
Total Cooling - BTUH	48000	48000	48000	48000	48000	58000
Sens. Cooling - BTUH	38400	38400	38400	38400	30400	43800
Cooling CFM Nominal	1700	1700	1700	1700	1700	1950
SEER (2)	10.0	10.0	10.0	10.0	10.0	10.0
EER_a (3)	-	9.3	-	9.3	9.3	-
Sound Rating (2)	8.4	8.4	8.4	8.4	8.4	8.4
Heating Input	69000	92000	115000	140000	140000	92000
Heating Capacity	56600	-	94300	114800	-	75400
Output Capacity	-	75400	-	-	114800	-
AFUE (1)	80.0	-	80.0	80.0	82.0	80.0
Outdoor S. S. Eff.	-	82.0	-	-	-	-
California SEER	73.3	74.8	75.8	76.5	76.6	73.6
Temp. Rise Range	20-50	30-60	40-70	45-75	45-75	25-55
Indoor Blower						
Type	DD	DD	DD	DD	DD	DD
Size - D x W	10 x 10	10 x 10	10 x 10	10 x 10	10 x 10	10 x 10
Motor H.P.	½	½	½	½	½	¾
Evaporator Coil						
Face (ft²)	4.43	4.43	4.43	4.43	4.43	4.43
Fin / In	14	14	14	14	14	14
No. of Rows	4	4	4	4	4	4
Outdoor Fan						
Fan Dia. (in.)	22	22	22	22	22	22
Motor H.P.	1/3	1/3	1/3	1/3	1/3	1/3
Condenser Coil						
Face Area (ft²)	14.95	14.95	14.95	14.95	14.95	14.95
Fin / In.	19	19	19	19	19	19
No. of Rows	1	1	1	1	1	1
Electrical						
Ph	1	3	1	1	3	1
Volts	208/230	208/230	208/230	208/230	208/230	208/230
Compr. RLA	21.8	14.1	21.8	21.8	14.1	28.2
Compr. LRA	120.0	110.0	120.0	120.0	110.0	135.0
Indoor Blw FLA.	4.2	4.2	4.2	4.2	4.2	6.0
Outdoor Blw FLA.	2.4	2.4	2.4	2.4	2.4	2.4
Min. Circuit Amp	33.9	24.3	33.9	33.9	24.3	43.7
Max. Fuse Size	50	35	50	50	35	60
Max HACR Breaker	50	30	50	50	30	60
Net Weight	470	480	490	500	500	525
Shipping Weight	480	490	500	510	510	535

PGB Models meet California NOx Requirements

- (1) In accordance with D.O.E. Test Procedures
- (2) Certified per ARI 210 and 270
- (3) BTU / Watt @ 80/67 F inside - 95 F outside air

BEFORE PURCHASING THIS APPLIANCE, READ IMPORTANT ENERGY COST AND EFFICIENCY INFORMATION AVAILABLE FROM YOUR RETAILER.

PGB - DATA AND SPECIFICATION

	PGB060100-3	PGB060125-1	PGB060125-3	PGB060150-1	PGB060150-3	PGB060150-4
Total Cooling - BTUH	58000	58000	58000	58000	58000	58000
Sens. Cooling - BTUH	43800	43800	43800	43800	43800	43800
Cooling CFM Nominal	1950	1950	1950	1950	1950	1950
SEER (2)	10.0	10.0	10.0	10.0	10.0	10.0
EER_a (3)	9.3	-	9.3	-	9.3	9.3
Sound Rating (2)	8.4	8.4	8.4	8.4	8.4	8.4
Heating Input	92000	115000	115000	140000	140000	140000
Heating Capacity	-	94300	-	114800	-	-
Output Capacity	75400	-	94300	-	114800	114800
AFUE (1)	-	80.0	-	80	-	-
Outdoor S. S. Eff.	82.0	-	82.0	-	82.0	82.0
California SEER	73.6	74.8	74.8	75.6	75.6	75.0
Temp. Rise Range	25-55	35-65	35-65	40-70	40-70	40-70
Indoor Blower						
Type	DD	DD	DD	DD	DD	DD
Size - D x W	11 x10	11 x 10	11 x 10	11 x 10	11 x 10	11 x 10
Motor H.P.	¾	¾	¾	¾	¾	¾
Evaporator Coil						
Face (ft²)	4.43	4.43	4.43	4.43	4.43	4.43
Fin / In	14	14	14	14	14	14
No. of Rows	4	4	4	4	4	4
Outdoor Fan						
Fan Dia. (in.)	22	22	22	22	22	22
Motor H.P.	1/3	1/3	1/3	1/3	1/3	1/3
Condenser Coil						
Face Area (ft²)	14.95	14.95	14.95	14.95	14.95	14.95
Fin / In.	19	19	19	19	19	19
No. of Rows	1	1	1	1	1	1
Electrical						
Ph	3	1	3	1	3	3
Volts	208/230	208/230	208/230	208/230	208/230	460
Compr. RLA	16.0	28.2	16.0	28.2	16.0	8.0
Compr. LRA	137.0	135.0	137.0	135.0	137.0	68.0
Indoor Blw FLA.	6.0	6.0	6.0	6.0	6.0	2.2
Outdoor Blw FLA.	2.4	2.4	2.4	2.4	2.4	1.2
Min. Circuit Amp	28.4	43.7	28.4	43.7	28.4	13.4
Max. Fuse Size	40	60	40	60	40	20
Max HACR Breaker	40	60	40	60	40	20
Net Weight	525	535	535	545	545	545
Shipping Weight	535	545	545	555	555	555

PGB Models meet California NOx Requirements

- (1) In accordance with D.O.E. Test Procedures
- (2) Certified per ARI 210 and 270
- (3) BTU / Watt @ 80/67 F inside - 95 F outside air

BEFORE PURCHASING THIS APPLIANCE, READ IMPORTANT ENERGY COST AND EFFICIENCY INFORMATION AVAILABLE FROM YOUR RETAILER.

EVAPORATOR BLOWER AIR FLOW DATA

MODEL #	PGB024 050/075-1							
VOLTAGE	208		230		208		230	
MOTOR SPEED	LOW		LOW		HIGH		HIGH	
E.S.P.	CFM	WATTS	CFM	WATTS	CFM	WATTS	CFM	WATTS
.10	715	250	825	295	845	300	970	340
.20	700	245	810	285	825	295	925	330
.30	685	240	795	280	810	285	905	320
.40	665	230	760	265	775	270	870	310
.50	640	220	720	250	740	260	815	290
.60	590	200	675	230	690	240	755	270

MODEL #	PGB030 050/075-1							
VOLTAGE	208		230		208		230	
MOTOR SPEED	LOW		LOW		HIGH		HIGH	
E.S.P.	CFM	WATTS	CFM	WATTS	CFM	WATTS	CFM	WATTS
.10	1000	300	1060	325	1120	360	1140	385
.20	960	295	1030	315	1080	355	1090	375
.30	905	290	970	300	1020	340	1035	360
.40	870	280	940	290	975	330	990	350
.50	830	265	880	285	925	320	935	340
.60	785	250	810	270	865	305	990	330

MODEL #	PGB030100-1 & PGB036 050/075/100-X							
VOLTAGE	208		230		208		230	
MOTOR SPEED	LOW		LOW		HIGH		HIGH	
E.S.P.	CFM	WATTS	CFM	WATTS	CFM	WATTS	CFM	WATTS
.10	1115	450	1265	480	1400	490	1465	520
.20	1100	425	1235	460	1245	470	1330	500
.30	1070	410	1200	450	1205	450	1285	480
.40	1040	375	1150	395	1150	410	1235	450
.50	995	360	1095	380	1100	395	1175	425
.60	960	340	1025	360	1050	370	1100	400

MODEL #	PGB042 075/100/125-X							
VOLTAGE	208		230		208		230	
MOTOR SPEED	LOW		LOW		HIGH		HIGH	
E.S.P.	CFM	WATTS	CFM	WATTS	CFM	WATTS	CFM	WATTS
.10	930	400	1120	475	1300	580	1555	650
.20	905	390	1100	465	1290	550	1515	630
.30	895	385	1075	445	1275	530	1455	600
.40	865	375	1060	435	1235	510	1395	570
.50	840	360	1030	425	1180	490	1320	550
.60	815	355	970	405	1110	465	1245	550

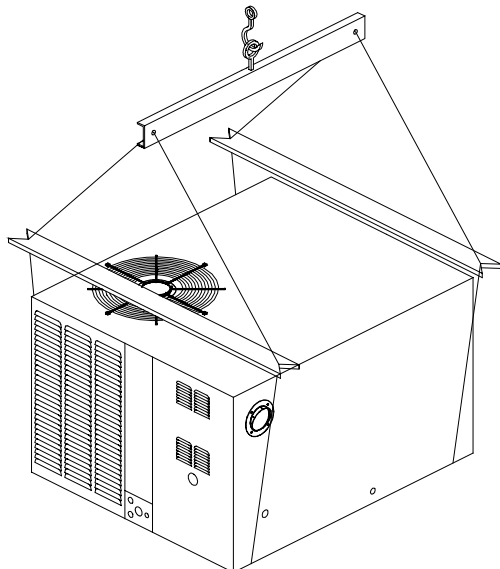
EVAPORATOR BLOWER AIR FLOW DATA

MODEL #	PGB048 075/100/125/150-X							
VOLTAGE	208		230		208		230	
MOTOR SPEED	LOW		LOW		HIGH		HIGH	
E.S.P.	CFM	WATTS	CFM	WATTS	CFM	WATTS	CFM	WATTS
.10	1400	650	1680	730	1720	745	1970	840
.20	1385	610	1645	710	1685	730	1905	790
.30	1355	585	1605	670	1645	695	1820	750
.40	1345	570	1540	635	1580	660	1725	710
.50	1295	530	1470	605	1515	625	1630	670
.60	1245	505	1410	570	1430	595	1540	635

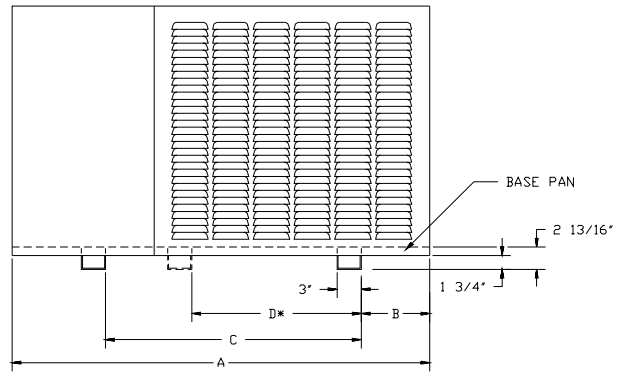
MODEL #	PGB060 100/125/150-X							
VOLTAGE	208		230		208		230	
MOTOR SPEED	LOW		LOW		HIGH		HIGH	
E.S.P.	CFM	WATTS	CFM	WATTS	CFM	WATTS	CFM	WATTS
.10	1610	815	1870	940	2025	1040	2285	1170
.20	1585	780	1830	915	2005	1020	2265	1150
.30	1570	775	1805	890	1955	990	2195	1090
.40	1545	760	1770	870	1925	960	2130	1060
.50	1505	730	1740	840	1870	940	2035	1000
.60	1450	715	1670	710	1805	895	1965	965

WET COIL PRESSURE DROP			
MODEL	IN. W.C. (H ₂ O)	MODEL	IN. W.C. (H ₂ O)
PGB024	.09	PGB042	.09 - .12
PGB030	.10 - .12	PGB048	.13
PGB036	.12 - .15	PGB060	.15

NOTE: 1) ALL BLOWER DATA IS DRY COIL WITHOUT FILTER, ADD .08 FOR FILTER
 2) WET COIL PRESSURE DROP RANGE FOR COOLING TONNAGE IN TWO DIFFERENT CABINETS, LARGER PRESSURE DROP CORRESPONDS TO THE SMALLER CABINET.
 EX: (SMALL CABINET) PGB030075-1 - .12" W.C., (MEDIUM CABINET) PGB030100-1 - .10" W.C.

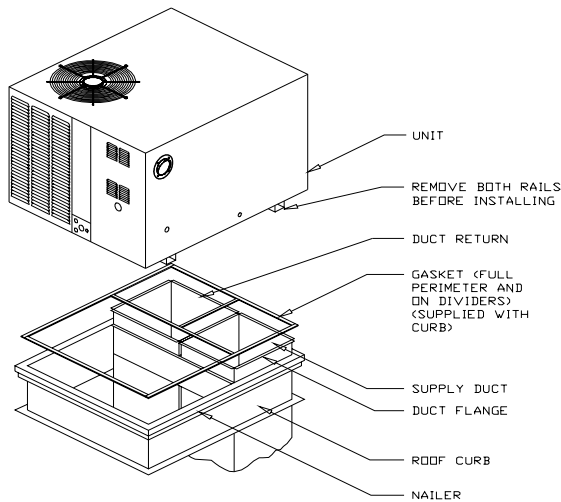


**LIFTING DETAIL
FIGURE 3**

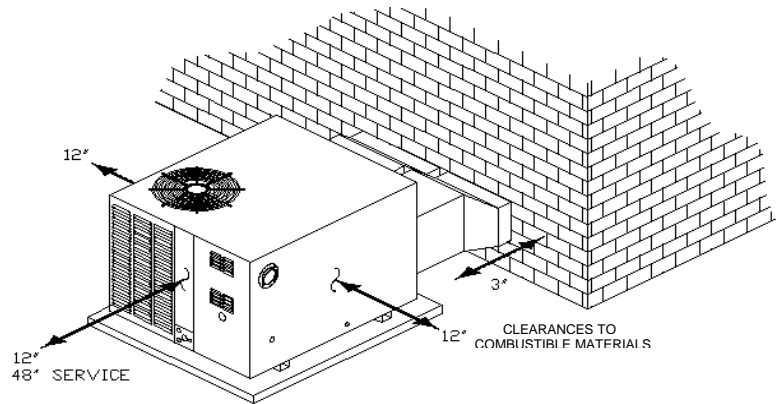


**BASE RAIL DETAIL
FIGURE 4**

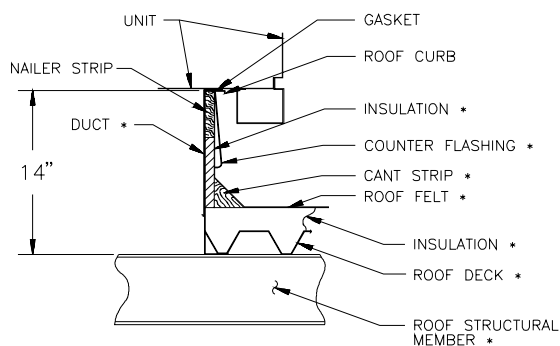
UNIT	A	B	C	D
2 - 3 Ton (Small)	52"	9"	31 3/4"	21-1/16"
2 1/2 - 3 1/2 Ton (Medium)	52"	9"	31 3/4"	21 1/16"
3 1/2 - 5 Ton (Large)	55 3/8"	8"	35 1/4"	23"



**ROOF CURB
FIGURE 5**

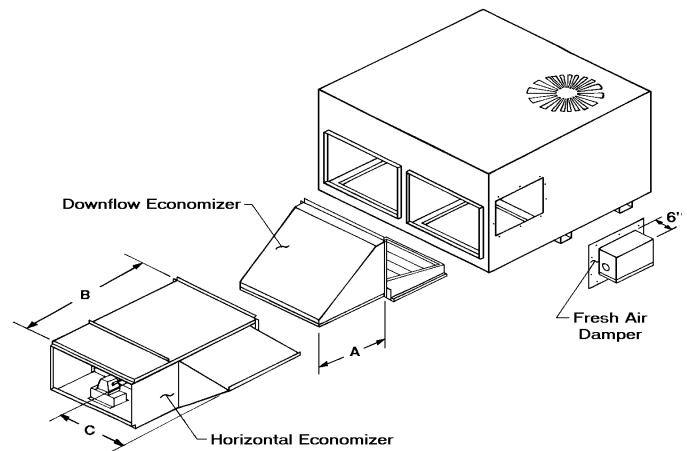


**OUTSIDE SLAB INSTALLATION
FIGURE 6**



**ROOF CURB DETAIL
FIGURE 7**

* BY CONTRACTOR

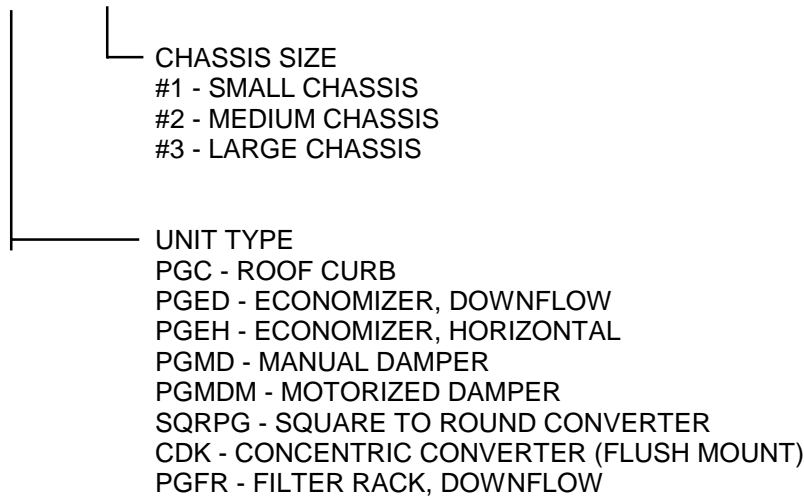


**ECONOMIZER & FRESH AIR DAMPER
(Optional) FIGURE 8**

UNIT	A	B	C
2 - 3 TON (Small)	17"	33"	13 13/16"
2 - 3 TON (Medium)	19"	35"	15 13/16"
3 1/2 - 5 TON (Large)	22"	42"	17 3/16"

ACCESSORY MODEL IDENTIFICATION

SQRPG - 1



ACCESSORY SELECTION TABLE

MODEL	DESCRIPTION	CHASSIS #1	CHASSIS #2	CHASSIS #3
PGC-1	ROOF CURB	•		
PGC-2	ROOF CURB		•	
PGC-3	ROOF CURB			•
PGED-1	DOWNFLOW ECONOMIZER	•		
PGED-2	DOWNFLOW ECONOMIZER		•	
PGED-3	DOWNFLOW ECONOMIZER			•
PGEH-1	HORIZONTAL ECONOMIZER	•		
PGEH-2	HORIZONTAL ECONOMIZER		•	
PGEH-3	HORIZONTAL ECONOMIZER			•
PGMD1-3	MANUAL FRESH AIR DAMPER	•	•	•
PGMDM1-3	MOTORIZED FRESH AIR DAMPER	•	•	•
SQRPG-1	SQUARE TO ROUND CONVERTER	•		
SQRPG-2	SQUARE TO ROUND CONVERTER		•	
SQRPG-3	SQUARE TO ROUND CONVERTER			•
CDK1-2	CONCENTRIC CONVERTER	•	•	
CDK-3	CONCENTRIC CONVERTER			•
PGFR-1	DOWNFLOW FILTER RACK	•		
PGFR-2	DOWNFLOW FILTER RACK		•	
PGFR-3	DOWNFLOW FILTER RACK			•

NOTES:

- 1) SEE FIGURES #5, 7 & 8, PAGE 10, FOR DETAILS.
- 2) SEE DIMENSIONS TABLE, PAGE 3, FOR MODELS IS CHASSIS #1, 2 & 3.