

UP TO **96% AFUE PERFORMANCE**

Goodman[®]

Air Conditioning & Heating

GMEC96

HIGH-EFFICIENCY, MULTI-SPEED
TWO-STAGE GAS FURNACE



Thank goodness for Goodman.[®]



Air Conditioning & Heating

PRECISE COMFORT AND VALUE

When selecting a gas furnace for your home, you are often searching to find the best combination for an ideal level of home comfort. You want to find a gas furnace that offers exceptional, dependable, and stable performance for many, many years. Most importantly, you want the best value possible. Faced with the decision to find a trustworthy and reliable gas furnace that delivers quiet, energy-saving operation and outstanding long-term value, the Goodman® brand GMEC96 Two-Stage Gas Furnace may be your best option. Whether it's the coldest day of the year or any day of the year, with the Goodman GMEC96 Gas Furnace you'll be saying, "Thank goodness for Goodman.®"



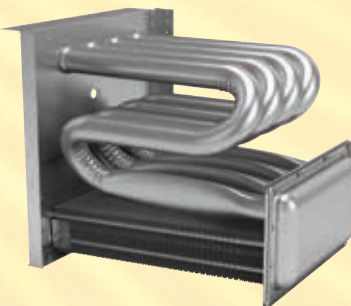
ENJOY THE COMFORT AND EFFICIENCY

The Goodman brand GMEC96 High-Efficiency Gas Furnace with two-stage gas valve and a two-speed induced-draft blower provides efficient and economical performance. Unlike single-stage gas furnaces that operate 'all on' or 'all off,' a Goodman brand two-stage gas furnace typically runs at the lowest possible speed to precisely maintain a constant, steady temperature in your home. A two-stage gas furnace optimizes its heating output to maximize indoor comfort and lower energy costs compared to a single-stage gas furnace.

When operating at low-speed levels, your Goodman brand gas furnace consumes less energy to keep your home comfortable. In addition, the 96% AFUE rating on this gas furnace means that 96 cents of every \$1.00 of heating energy expense warms your home. Some older central heating systems are rated at 60% AFUE. The Department of Energy (DOE) established the AFUE (Annual Fuel Utilization Efficiency) system to calculate the annual operating cost of residential gas furnaces.



THE HEART OF COMFORT



The award-winning design of the primary heat exchanger in the Goodman brand GMEC96 Two-Stage Gas Furnace is unique. It's constructed from tubular aluminized-steel. The use of wrinkle-bend technology results in an extremely durable heat exchanger. A heat exchanger often is considered the essential component of any gas furnace. Additionally, this gas furnace has a stainless-steel secondary heat exchanger. This combination offers one of the best levels of reliability, durability, and efficiency you'll find within the Goodman brand.

IMPRESSIVE FEATURES AND BENEFITS:

GOODMAN® BRAND GMEC96

MULTI-SPEED TWO-STAGE GAS FURNACE

- Heavy-duty aluminized-steel tubular heat exchanger
- Stainless-steel secondary heat exchanger
- Two-stage gas valve provides quiet, economical heating
- Durable silicon nitride igniter
- Quiet two-speed induced draft blower
- Self-diagnostic control board with constant memory fault code history output to a dual LED
- Color-coded low-voltage terminals with provisions for electronic air cleaner and humidifier
- Efficient and quiet multi-speed ECM motor
- Heavy-gauge steele cabinet with durable finish
- Foil-faced insulated heat exchanger section supports added energy-efficient operation

Talk to your Goodman brand dealer about opportunities to optimize the efficiency of your new unit.

OUTSTANDING LIMITED WARRANTY* PROTECTION



* Complete warranty details available from your local dealer or at www.goodmanmfg.com. To receive the 10-Year Unit Replacement Limited Warranty, Lifetime Heat Exchanger Limited Warranty (good for as long as you own your home) and 10-Year Parts Limited Warranty, online registration must be completed within 60 days of installation. Online registration is not required in California or Quebec.

ADDITIONAL INFORMATION

Before purchasing this appliance, read important information about its estimated annual energy consumption, yearly operating cost, or energy efficiency rating that is available from your retailer.



Thank goodness for Goodman.®

MODEL	HEATING EFFICIENCY AFUE	LIMITED PARTS WARRANTY* COVERAGE			ComfortNet™ COMPATIBLE	MOTOR TYPE	GAS VALVE TYPE	TYPE OF IGNITER	TUBULAR DUAL-DIAMETER PRIMARY HEAT EXCHANGER	INSTALLATION OPTIONS
		Lifetime Heat Exchanger Limited Warranty*	10-Year Unit Replacement Heat Exchanger Limited Warranty*	10-Year Parts Limited Warranty*						
GMVM97	Up to 97%	●	●	●	●	Variable-Speed ECM	Modulating	Silicon Nitride	Aluminized Steel	Upflow Horizontal
GCVM97	Up to 97%	●	●	●	●	Variable-Speed ECM	Modulating	Silicon Nitride	Aluminized Steel	Downflow Horizontal
GMEC96	Up to 96%	●	●	●	●	Variable-Speed ECM	Two Stage	Silicon Nitride	Aluminized Steel	Upflow Horizontal
GCVC96	Up to 96%	●	●	●	●	Variable-Speed ECM	Two Stage	Silicon Nitride	Aluminized Steel	Downflow Horizontal
GMEC96	Up to 96%	●	●	●		Multi Speed ECM	Two Stage	Silicon Nitride	Aluminized Steel	Upflow Horizontal
GMSS96	Up to 96%	●	●	●		Multi Speed	Single Stage	Silicon Nitride	Aluminized Steel	Upflow Horizontal
GCSS96	Up to 96%	●	●	●		Multi Speed	Single Stage	Silicon Nitride	Aluminized Steel	Downflow Horizontal
GMSS92	Up to 92%	●		●		Multi Speed	Single Stage	Silicon Nitride	Aluminized Steel	Upflow Horizontal
GCSS92	Up to 92%	●		●		Multi Speed	Single Stage	Silicon Nitride	Aluminized Steel	Downflow Horizontal

*Complete warranty details available from your local dealer or at www.goodmanmfg.com. To receive the Lifetime Heat Exchanger Limited Warranty (good for as long as you own your own home), 10-Year Unit Replacement Heat Exchanger Limited Warranty and 10-Year Parts Limited Warranty, online registration must be completed within 60 days of installation. Online registration is not required in California or Quebec.



GOODMAN – A MEMBER OF DAIKIN GROUP

Daikin Industries, Ltd. (DIL) is a global Fortune 1,000 company which celebrated its 90th anniversary in May 2014. The company is recognized as the largest HVAC (Heating, Ventilating, Air Conditioning) manufacturer in the world. Daikin is primarily engaged in developing indoor comfort products, systems and refrigeration products for residential, commercial and industrial applications. Its consistent success is derived, in part, from a focus on innovative, energy-efficient and premium quality indoor climate and comfort management solutions.



Our continuing commitment to quality products may mean a change in specifications without notice.
© 2014 Goodman Manufacturing Company, L.P. · Houston, Texas

www.goodmanmfg.com



CB-GMEC96 09-14