

MULTI- POSITION ELECTRIC AIRHANDLER 1 1/2 TON – 5 TON



Description / Application

- Compact, versatile upflow, right or left horizontal, and counterflow multi-position.
- May be located in closet, utility room, attic, crawl space or basement.
- Approved for modular homes.

Cabinet Construction

- Insulated steel cabinet.

Cabinet Finish

- No rust galvanized stucco finish with painted front panels.

Standard Equipment

- Fully insulated cabinet.
- Direct drive multi-speed motor to permit air volume variation for heating & cooling application needs.
- Equipped with a check flowrater for Heat Pump and Cooling Unit Operation.
- Built-in coil with horizontal & vertical thermoplastic drain pans with secondary drains.
- Built-in filter provision.
- Copper Tube – Aluminum Fin Coils.
- Power supply entry at top.
- Low voltage entry on left side and top.
- Transformer and blower time delay on all units.

Accessories

- Pre-tested, pre-wired heat kits in 3, 5, 6, 8, 10, 15, 20, 21 kw, Single phase models. As well as 15 & 20kw Three phase models. Featuring: electric heat limit control, rust resistant nickel chromium heating elements, and select models having circuit breakers.
- Permanent washable plastic airfilters. Part numbers; FIL18-32, FIL36-42, AND FIL48-61.



ELECTRICAL DATA

PHYSICAL DATA

Model No.	Single Supply Circuit		Min. VAC	Max VAC	Blower Motor	
	Minimum Circuit Ampacity @208/240V	Maximum Overcurrent Prot. Amps @208/240V			FLA	HP
AR24-1	1.9/1.9	15/15	197	253	1.5	1/5
AR30-1	2.4/2.4	15/15	197	253	1.95	1/3
AR32-1	2.4/2.4	15/15	197	253	1.95	1/3
AR36-1	2.7/2.7	15/15	197	253	2.15	1/3
AR42-1	2.8/2.8	15/15	197	253	2.2	1/2
AR48/49-1	3.3/3.3	15/15	197	253	2.6	1/2
AR60-1	4.9/4.9	15/15	197	253	3.9	3/4
AR61-1	4.9/4.9	15/15	197	253	3.9	3/4

Blower		Coil Drain Conn	Refrigerant Connection		Approx. Shipping
Dia.	Width	FPT	Liq.	Suct.	Weight
8 [20.52 cm]	6 [15.24 cm]	3/4 [1.91 cm]	3/8 [.95 cm]	5/8 [1.59 cm]	105 [47.63 kg]
9 1/2 [24.13 cm]	6 [15.24 cm]	3/4 [1.91 cm]	3/8 [.95 cm]	3/4 [1.91 cm]	106 [48.08 kg]
9 1/2 [24.13 cm]	6 [15.24 cm]	3/4 [1.91 cm]	3/8 [.95 cm]	3/4 [1.91 cm]	113 [51.26 kg]
9 1/2 [24.13 cm]	6 [15.24 cm]	3/4 [1.91 cm]	3/8 [.95 cm]	3/4 [1.91 cm]	120 [54.43 kg]
9 1/2 [24.13 cm]	8 [20.52 cm]	3/4 [1.91 cm]	3/8 [.95 cm]	3/4 [1.91 cm]	141 [63.96 kg]
9 1/2 [24.13 cm]	8 [20.52 cm]	3/4 [1.91 cm]	3/8 [.95 cm]	3/4 [1.91 cm]	144 [65.32 kg]
9 1/2 [24.13 cm]	8 [20.52 cm]	3/4 [1.91 cm]	3/8 [.95 cm]	7/8 [2.22 cm]	173 [78.47 kg]
10 5/8 [26.99 cm]	10 5/8 [26.99 cm]	3/4 [1.91 cm]	3/8 [.95 cm]	7/8 [2.22 cm]	192 [87.09 kg]
10 5/8 [26.99 cm]	10 5/8 [26.99 cm]	3/4 [1.91 cm]	3/8 [.95 cm]	7/8 [2.22 cm]	192 [87.09 kg]

[] DESIGNATES METRIC EQUIVALENTS IN CENTIMETERS AND KILOGRAMS

BLOWER PERFORMANCE

PERFORMANCE RATINGS

Model	Speed	CFM Delivered Against External Static Pressure, inch H ₂ O				
		0.1	0.2	0.3	0.4	0.5
AR18-1	HIGH	700	630	580	530	490
	LOW	674	600	545	493	375
AR24-1	HIGH	1056	1023	978	923	866
	LOW	935	914	881	847	788
AR30/32-1	HIGH	1150	1106	1040	980	915
	LOW	1060	1039	1982	914	863
AR36-1	HIGH	1549	1472	1418	1358	1285
	LOW	1322	1307	1277	1323	1154
AR42-1	HIGH	1586	1530	1471	1410	1350
	LOW	1524	1485	1423	1367	1175
AR48/49-1	HIGH	1670	1610	1531	1467	1393
	LOW	1580	1516	1465	1405	1343
AR60/61-1	HIGH	2170	2080	2000	1920	1850
	LOW	1900	1810	1780	1710	1630

Model No.	Capacity (TONS) Nominal (Cooling)	Seasonal Efficiency AFUE%
AR18-1	1 1/2	100.0
AR24-1	2	100.0
AR30/32-1	2 1/2	100.0
AR36-1	3	100.0
AR42-1	3 1/2	100.0
AR48/49-1	4	100.0
AR60/61-1	5	100.0

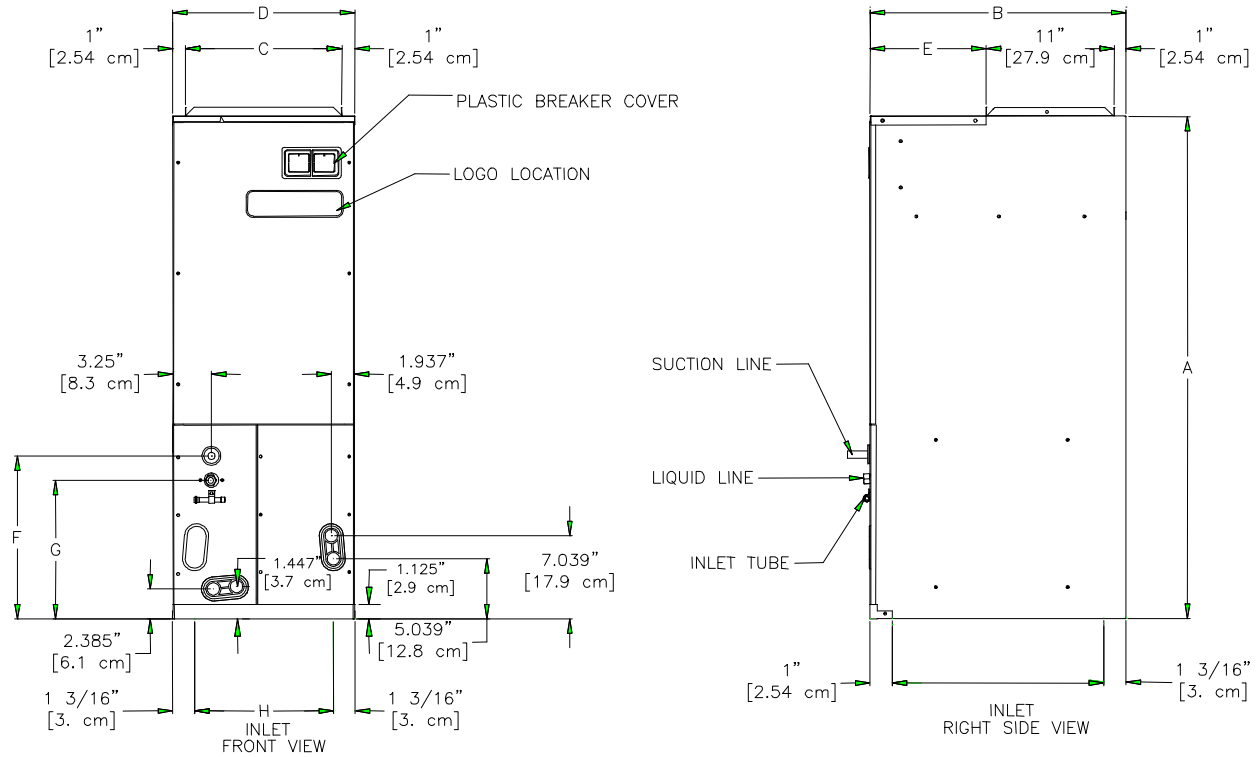
Dry coil with Filter in Place
SCFM Correction for Wet Coil - 4%.

HEATER KIT APPLICATION OPTIONS

	AR18-1	AR24-1	AR30-1	AR32-1	AR36-1	AR42-1	AR48/49-1	AR60-1	AR61-1
HKR-03	—	—	—	—	—	—	—	—	—
HKR-05(c)	—	—	—	—	—	—	—	—	—
HKR-06	—	—	—	—	—	—	—	—	—
HKR-08(c)	—	—	—	—	—	—	—	—	—
HKR-10(c)		—	—	—	—	—	—	—	—
HKR-15C			—	—	—	—	—	—	—
HKR-20C					—	—	—	—	—
HKR-21C					—	—	—	—	—
HKR3-15*					—	—	—	—	—
c) HKR3-20* optional					—	—	—	—	—

* - Heat Kit requires three phase power supply

PHYSICAL DIMENSIONS (See fig. Below)



Base Model #	A	B	C	D	E	F	G	H	I
AR18, 24, 30, 32	41.125 [107.0 cm]	22 [55.9 cm]	13.5 [34.3 cm]	15.5 [39.4 cm]	10 [25.4 cm]	13.375 [34.0 cm]	10.811 [27.5 cm]	13.125 [33.3 cm]	19.812 [50.3 cm]
AR36, 42	46.75 [118.7 cm]	22 [55.9 cm]	17.5 [44.5 cm]	19.5 [49.5 cm]	10 [25.4 cm]	13.375 [34.0 cm]	10.811 [27.5 cm]	17.125 [43.5 cm]	19.812 [50.3 cm]
AR48, 49, 60, 61	53.25 [135.3 cm]	24 [61.0 cm]	20 [50.8 cm]	22 [55.9 cm]	12 [30.5 cm]	14.5 [36.8 cm]	11.935 [30.3 cm]	19.625 [49.8 cm]	21.812 [55.4 cm]

[] DESIGNATES METRIC EQUIVALENTS

NOTE: SPECIFICATIONS AND PERFORMANCE DATA LISTED HEREIN ARE SUBJECT TO CHANGE WITHOUT NOTICE.

Quality Makes the Difference!

All of our systems are designed and manufactured with the same high quality standards regardless of size or efficiency. Our designs virtually eliminate the most frequent causes of product failure. They are simple to service and forgiving to operate. We use the highest quality materials and components available because if a part fails then the unit fails. Finally, every unit is run tested before it leaves the factory. That's why we know.....

There's No Better Quality.

Visit our web site at www.goodmanmfg.com for information on:

- Goodman products
- Warranties
- Customer Services
- Parts
- Contractor Programs and Training
- Financing Options