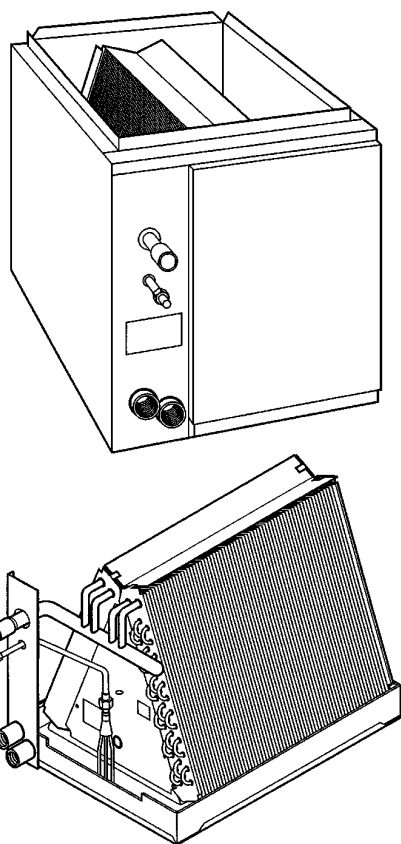




Product Data

CC5A, CD5A, CD5B Heating/Cooling Coil

Sizes A018 thru A070



The CD5A/CD5B are cased coils designed to fit BDP furnaces of the same width or the next smaller size. The CD5A/CD5B are available in sizes 018 through 070 (1-1/2—6 tons). The CD5A has a prepainted wrapper while the CD5B has an unpainted embossed galvanized steel wrapper.

The CC5A is an uncased A-coil requiring a field-fabricated enclosure. It is available in sizes 018 through 060 (1-1/2—5 tons).

FEATURES

Coil Design—Our advanced manufacturing methods give a better bond of the fin to the grooved tubing.

Contaminants are not introduced into the coil during manufacturing and all coils are shipped with a holding charge. This helps to prevent galvanic action. The coils are approved for air conditioning or heat pump application in the vertical configuration, both upflow and downflow.

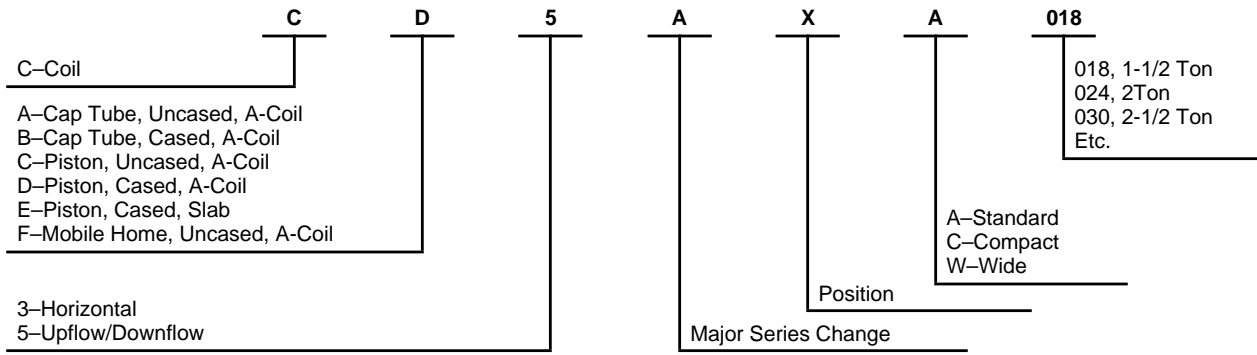
Metering Device—The CD5A/CD5B and CC5A Coils include a Check-Flo-Rater® metering device which eliminates the potential serviceability requirements of check valves and expansion devices used in conventional coils.

Condensate Pan—Each coil is equipped with a corrosion-resistant condensate drain pan with two 3/4-in. female threaded brass insert connections. The thermoplastic drain pan is designed with a slope to help ensure proper drainage.

Refrigerant Connections—Sweat-type connections are furnished for installation of the refrigerant tubes to ensure leak-free operation.

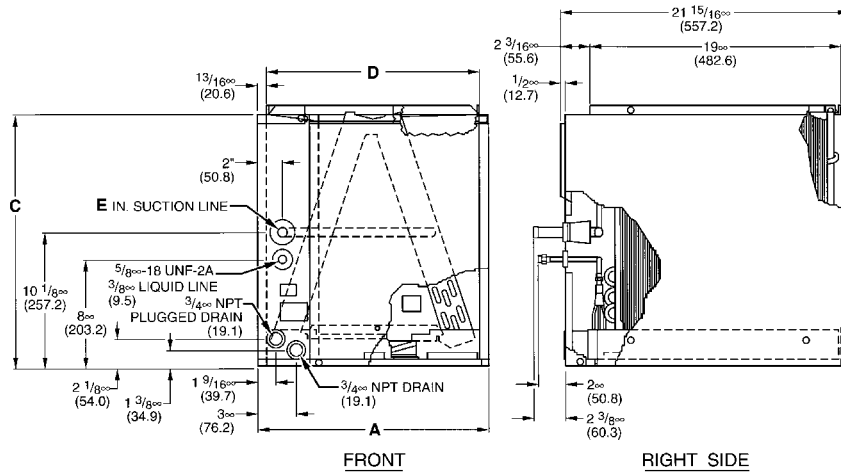
Casing—The coil casing is fully insulated to minimize heating or cooling transfer, while maintaining quiet operation.

Model number nomenclature

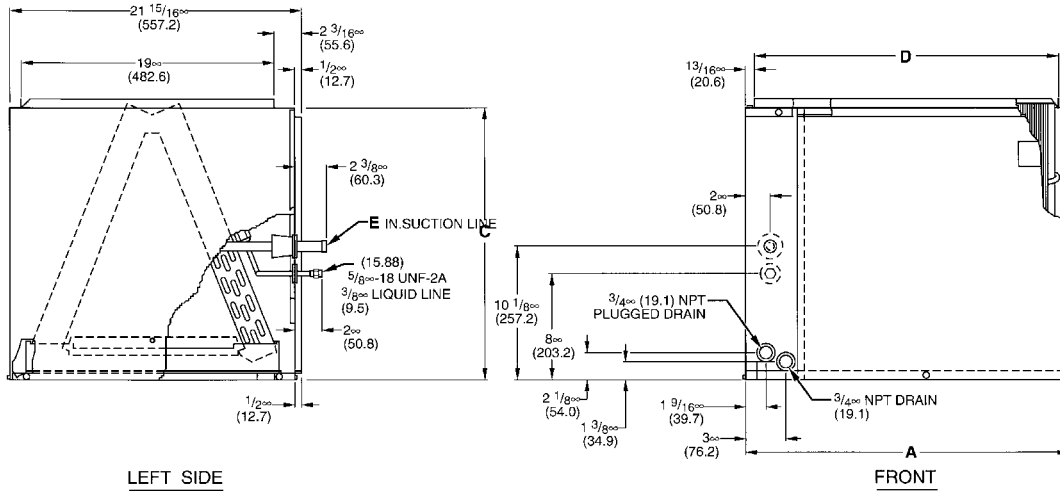


CERTIFICATION APPLIES ONLY
 WHEN USED WITH PROPER
 COMPONENTS AS LISTED
 WITH ARI





CASED COILS CD5_XA018, 024, 030, 036, 042, 048, CD5_XW024, 036, CD5_XC048

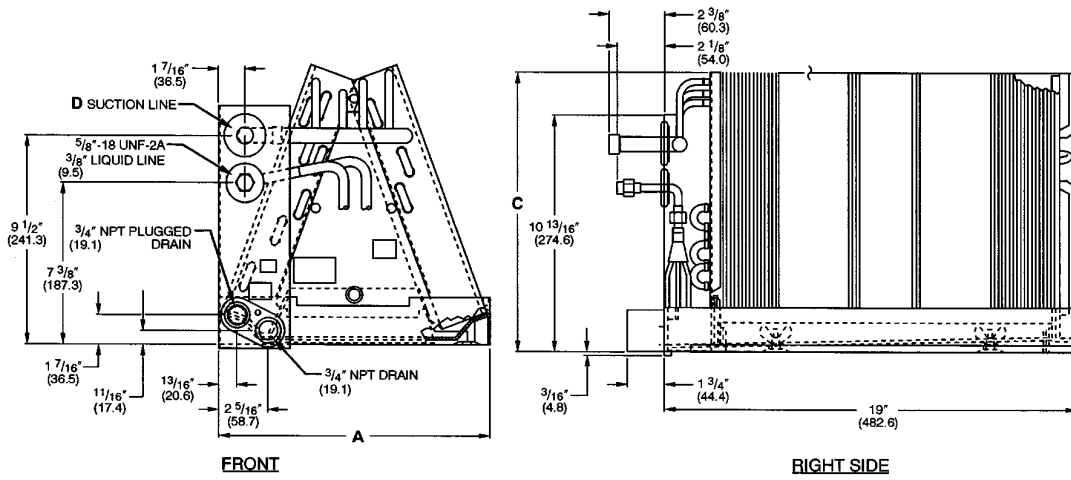


CASED COILS CD5_XW042, 048, 060, CD5_XA060, A070

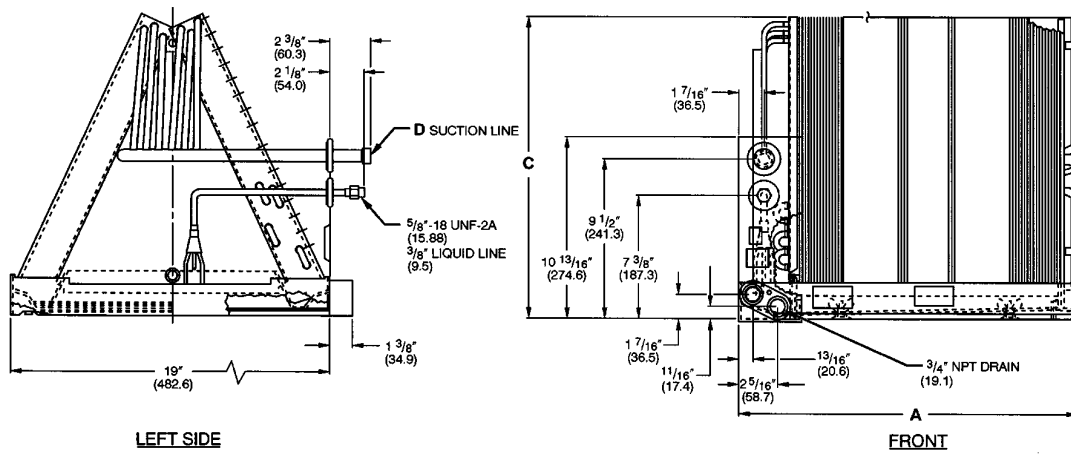
A94090

| UNIT | SERIES | A | | C | | D | | E | | SHIPPING WEIGHT | |
|-----------|--------|---------|-------|--------|-------|---------|-------|-----|-------|-----------------|------|
| | | In. | mm | In. | mm | In. | mm | In. | mm | Lb. | Kg. |
| CD5_XA018 | A | 14-3/16 | 360.4 | 13-3/4 | 349.2 | 12-9/16 | 319.1 | 5/8 | 15.88 | 27 | 12.2 |
| CD5_XA024 | A | 14-3/16 | 360.4 | 13-3/4 | 349.2 | 12-9/16 | 319.1 | 5/8 | 15.88 | 29 | 13.2 |
| CD5_XW024 | A | 17-1/2 | 444.5 | 17 | 431.8 | 15-7/8 | 403.2 | 3/4 | 19.05 | 37 | 16.8 |
| CD5_XA030 | A | 14-3/16 | 360.4 | 17 | 431.8 | 12-9/16 | 319.1 | 3/4 | 19.05 | 32 | 14.5 |
| CD5_XW030 | A | 17-1/2 | 444.5 | 17 | 431.8 | 15-7/8 | 403.2 | 3/4 | 19.05 | 37 | 16.8 |
| CD5_XA036 | A | 17-1/2 | 444.5 | 19 | 482.6 | 15-7/8 | 403.2 | 3/4 | 19.05 | 43 | 19.5 |
| CD5_XW036 | A | 21 | 533.4 | 19 | 482.6 | 19-3/8 | 492.1 | 3/4 | 19.05 | 45 | 20.4 |
| CD5_XA042 | A | 21 | 533.4 | 19 | 482.6 | 19-3/8 | 492.1 | 7/8 | 22.23 | 45 | 20.4 |
| CD5_XA048 | A | 21 | 533.4 | 25 | 635.1 | 19-3/8 | 492.1 | 7/8 | 22.23 | 57 | 25.9 |
| CD5_XC048 | A | 21 | 533.4 | 20-1/2 | 520.7 | 19-3/8 | 492.1 | 7/8 | 22.23 | 48 | 21.8 |
| CD5_XW042 | A | 24-1/2 | 622.3 | 20-1/2 | 520.7 | 22-7/8 | 581.0 | 7/8 | 22.23 | 49 | 22.2 |
| CD5_XW048 | A | 24-1/2 | 622.3 | 20-1/2 | 520.7 | 22-7/8 | 581.0 | 7/8 | 22.23 | 53 | 24.0 |
| CD5_XA060 | A | 24-1/2 | 622.3 | 20-1/2 | 520.7 | 22-7/8 | 581.0 | 7/8 | 22.23 | 53 | 24.0 |
| CD5_XW060 | A | 31-1/2 | 800.1 | 20-1/2 | 520.7 | 29-7/8 | 758.8 | 7/8 | 22.23 | 66 | 29.9 |
| CD5_XA070 | A | 31-1/2 | 800.1 | 20-1/2 | 520.7 | 29-7/8 | 758.8 | 7/8 | 22.23 | 66 | 29.9 |

NOTE: If fourth character in unit model number is an A, the casing is pre-painted steel. If character is a B, the casing is unpainted embossed steel.



UNCASED COILS CC5AXA018, 024, 030, 036, 042, CC5AXW024, 030, CC5AXCO48



UNCASED COILS CC5AXW042, 048, 060, CC5AXA060

A94091

| UNIT | SERIES | A | | C | | D | | SHIPPING WEIGHT | |
|-----------|--------|----------|-------|----------|-------|-----|-------|-----------------|------|
| | | In. | mm | In. | mm | In. | mm | Lb. | Kg. |
| CC5AXA018 | A | 12-5/8 | 320.7 | 10-9/16 | 268.3 | 5/8 | 15.88 | 15 | 6.8 |
| CC5AXA024 | A | 12-5/8 | 320.7 | 12-11/16 | 322.2 | 5/8 | 15.88 | 17 | 7.7 |
| CC5AXW024 | A | 15-15/16 | 404.8 | 14-3/4 | 374.6 | 3/4 | 19.05 | 22 | 10.0 |
| CC5AXA030 | A | 12-5/8 | 320.7 | 15-1/8 | 384.2 | 3/4 | 19.05 | 20 | 9.1 |
| CC5AXW030 | A | 15-15/16 | 404.8 | 14-3/4 | 374.6 | 3/4 | 19.05 | 22 | 10.0 |
| CC5AXA036 | A | 15-15/16 | 404.8 | 18-1/2 | 469.9 | 3/4 | 19.05 | 24 | 10.9 |
| CC5AXA042 | A | 19-3/8 | 492.1 | 17-3/4 | 450.8 | 7/8 | 22.23 | 26 | 11.8 |
| CC5AXW042 | A | 22-15/16 | 582.6 | 16-3/16 | 411.1 | 7/8 | 22.23 | 28 | 12.7 |
| CC5AXW048 | A | 22-15/16 | 582.6 | 20-1/16 | 509.6 | 7/8 | 22.23 | 31 | 14.0 |
| CC5AXC048 | A | 19-3/8 | 492.1 | 20-1/16 | 509.6 | 7/8 | 22.23 | 27 | 12.2 |
| CC5AXA060 | A | 22-15/16 | 582.6 | 20-1/16 | 509.6 | 7/8 | 22.23 | 31 | 14.0 |
| CC5AXW060 | A | 29-15/16 | 760.4 | 20-1/16 | 509.6 | 7/8 | 22.23 | 39 | 17.7 |

Performance data

COOLING CAPACITIES (MBtuh)

| UNIT SIZE | EVAP AIR | COIL REFRIGERANT TEMPERATURE (°F) | | | | | | | | | | | | | | |
|--------------|-----------|---|----|----|----|----|----|----|----|----|----|----|----|----|----|----|
| | | 35 | | | 40 | | | 45 | | | 50 | | | 55 | | |
| | Cfm BF | Evaporator Air — Entering Wet Bulb Temperature (°F) | | | | | | | | | | | | | | |
| | | 62 | 67 | 72 | 62 | 67 | 72 | 62 | 67 | 72 | 62 | 67 | 72 | 62 | 67 | 72 |
| A018 | 450 | 22 | 27 | 34 | 18 | 24 | 30 | 14 | 20 | 26 | 11 | 16 | 22 | 9 | 11 | 18 |
| | 0.17 | 15 | 15 | 14 | 14 | 13 | 13 | 12 | 12 | 11 | 10 | 10 | 9 | 8 | 8 | 8 |
| | 600 | 26 | 33 | 41 | 22 | 29 | 37 | 18 | 24 | 32 | 14 | 19 | 27 | 12 | 13 | 21 |
| | 22 | 19 | 18 | 17 | 17 | 16 | 15 | 15 | 14 | 13 | 12 | 12 | 11 | 10 | 10 | 10 |
| | 750 | 30 | 38 | 47 | 25 | 33 | 42 | 20 | 28 | 37 | 17 | 22 | 30 | 14 | 15 | 24 |
| | 25 | 22 | 21 | 20 | 20 | 19 | 17 | 17 | 17 | 15 | 14 | 14 | 13 | 11 | 12 | 11 |
| A024 W024 | 600 | 28 | 36 | 44 | 24 | 31 | 39 | 19 | 26 | 34 | 15 | 21 | 29 | 13 | 15 | 23 |
| | 12 | 20 | 20 | 18 | 18 | 17 | 16 | 16 | 15 | 14 | 13 | 13 | 12 | 11 | 11 | 10 |
| | 800 | 34 | 43 | 52 | 29 | 37 | 47 | 23 | 32 | 41 | 19 | 25 | 35 | 16 | 18 | 27 |
| | 16 | 25 | 24 | 22 | 22 | 21 | 20 | 19 | 19 | 17 | 16 | 16 | 15 | 13 | 14 | 13 |
| | 1000 | 39 | 49 | 60 | 33 | 43 | 54 | 27 | 36 | 47 | 22 | 29 | 39 | 19 | 20 | 31 |
| | 18 | 29 | 27 | 25 | 26 | 25 | 23 | 23 | 22 | 20 | 19 | 19 | 17 | 16 | 16 | 15 |
| A030 W030 | 750 | 37 | 46 | 57 | 31 | 41 | 52 | 25 | 34 | 45 | 19 | 27 | 38 | 14 | 16 | 25 |
| | 13 | 26 | 25 | 24 | 24 | 23 | 22 | 21 | 20 | 19 | 17 | 17 | 16 | 14 | 14 | 13 |
| | 1000 | 45 | 57 | 70 | 38 | 50 | 63 | 30 | 42 | 55 | 25 | 33 | 46 | 17 | 19 | 30 |
| | 17 | 33 | 31 | 29 | 29 | 28 | 26 | 26 | 25 | 23 | 21 | 22 | 20 | 17 | 18 | 16 |
| | 1250 | 52 | 66 | 81 | 44 | 57 | 73 | 35 | 48 | 63 | 29 | 38 | 53 | 20 | 22 | 34 |
| | 20 | 39 | 36 | 34 | 35 | 23 | 30 | 30 | 29 | 27 | 25 | 25 | 23 | 20 | 21 | 19 |
| A036 W036 | 900 | 42 | 52 | 63 | 35 | 46 | 57 | 28 | 39 | 50 | 22 | 31 | 42 | 19 | 22 | 33 |
| | 10 | 34 | 32 | 30 | 30 | 29 | 27 | 27 | 26 | 24 | 22 | 22 | 21 | 19 | 19 | 18 |
| | 1200 | 50 | 62 | 75 | 43 | 55 | 68 | 34 | 46 | 60 | 28 | 37 | 50 | 23 | 26 | 40 |
| | 13 | 41 | 39 | 35 | 38 | 35 | 32 | 33 | 32 | 29 | 28 | 28 | 25 | 23 | 23 | 22 |
| | 1500 | 57 | 70 | 84 | 49 | 62 | 76 | 39 | 52 | 67 | 33 | 42 | 57 | 27 | 30 | 45 |
| | 16 | 48 | 44 | 40 | 44 | 41 | 37 | 39 | 37 | 33 | 33 | 33 | 29 | 27 | 28 | 25 |
| A042 W042 | 1050 | 45 | 56 | 68 | 38 | 49 | 61 | 31 | 41 | 54 | 25 | 33 | 45 | 20 | 23 | 36 |
| | 14 | 37 | 54 | 32 | 33 | 31 | 29 | 29 | 28 | 26 | 25 | 24 | 23 | 20 | 21 | 19 |
| | 1400 | 53 | 66 | 79 | 45 | 58 | 72 | 36 | 49 | 63 | 31 | 39 | 53 | 25 | 26 | 42 |
| | 17 | 45 | 41 | 37 | 41 | 38 | 34 | 36 | 34 | 31 | 31 | 30 | 27 | 25 | 28 | 23 |
| | 1750 | 60 | 73 | 87 | 51 | 65 | 80 | 42 | 55 | 70 | 36 | 44 | 60 | 30 | 32 | 47 |
| | 20 | 52 | 47 | 42 | 47 | 44 | 38 | 42 | 40 | 35 | 36 | 35 | 31 | 30 | 30 | 27 |
| A048 W048 | 1200 | 48 | 59 | 71 | 41 | 52 | 64 | 33 | 44 | 57 | 30 | 36 | 49 | 22 | 26 | 39 |
| | 18 | 39 | 36 | 33 | 36 | 34 | 30 | 32 | 30 | 28 | 30 | 27 | 24 | 22 | 23 | 21 |
| | 1600 | 55 | 68 | 80 | 47 | 60 | 74 | 39 | 51 | 66 | 33 | 41 | 56 | 27 | 30 | 45 |
| | 22 | 47 | 43 | 38 | 43 | 40 | 35 | 38 | 36 | 32 | 33 | 32 | 29 | 27 | 28 | 25 |
| | 2000 | 61 | 74 | 88 | 53 | 66 | 81 | 44 | 57 | 72 | 38 | 46 | 62 | 32 | 34 | 50 |
| | 25 | 54 | 49 | 42 | 50 | 45 | 39 | 44 | 42 | 36 | 38 | 37 | 33 | 32 | 32 | 29 |
| C048 | 1200 | 44 | 57 | 69 | 36 | 48 | 62 | 30 | 40 | 53 | 25 | 29 | 43 | 20 | 21 | 32 |
| | 11 | 39 | 36 | 33 | 35 | 33 | 30 | 30 | 29 | 27 | 25 | 25 | 23 | 20 | 21 | 19 |
| | 1600 | 52 | 65 | 78 | 43 | 56 | 71 | 37 | 46 | 61 | 31 | 35 | 50 | 25 | 25 | 37 |
| | 15 | 48 | 44 | 38 | 42 | 40 | 35 | 37 | 36 | 32 | 31 | 31 | 28 | 25 | 25 | 24 |
| | 2000 | 57 | 71 | 85 | 49 | 62 | 78 | 42 | 50 | 68 | 36 | 39 | 55 | 29 | 29 | 41 |
| | 19 | 55 | 50 | 42 | 49 | 46 | 40 | 42 | 41 | 36 | 36 | 37 | 32 | 29 | 29 | 27 |

See notes on pg. 6.

COOLING CAPACITIES (MBtuh) Continued

| UNIT SIZE | EVAP AIR | COIL REFRIGERANT TEMPERATURE (°F) | | | | | | | | | | | | | | |
|-----------|------------------|---|----|-----|----|----|-----|----|----|----|----|----|----|----|----|----|
| | | 35 | | | 40 | | | 45 | | | 50 | | | 55 | | |
| | Cfm <i>BF</i> | Evaporator Air — Entering Wet Bulb Temperature (°F) | | | | | | | | | | | | | | |
| 62 | | 67 | 72 | 62 | 67 | 72 | 62 | 67 | 72 | 62 | 67 | 72 | 62 | 67 | 72 | |
| A060 | 1600 | 57 | 71 | 87 | 48 | 62 | 78 | 38 | 52 | 68 | 31 | 41 | 57 | 26 | 29 | 44 |
| | 22 | 47 | 44 | 41 | 43 | 40 | 37 | 37 | 36 | 33 | 31 | 31 | 29 | 26 | 26 | 24 |
| | 2000 | 65 | 80 | 97 | 54 | 70 | 88 | 43 | 59 | 76 | 36 | 46 | 64 | 30 | 33 | 50 |
| | 25 | 55 | 51 | 46 | 50 | 46 | 42 | 43 | 42 | 38 | 36 | 37 | 33 | 30 | 31 | 28 |
| | 2400 | 71 | 88 | 105 | 60 | 77 | 95 | 48 | 65 | 83 | 41 | 51 | 70 | 34 | 36 | 55 |
| | 28 | 62 | 57 | 50 | 56 | 52 | 46 | 48 | 47 | 42 | 41 | 41 | 37 | 34 | 34 | 31 |
| W060 | 1600 | 63 | 78 | 94 | 54 | 69 | 85 | 43 | 59 | 75 | 35 | 47 | 64 | 29 | 34 | 51 |
| | 16 | 52 | 48 | 44 | 47 | 44 | 40 | 41 | 40 | 36 | 35 | 35 | 32 | 29 | 29 | 27 |
| | 2000 | 71 | 88 | 105 | 61 | 78 | 96 | 49 | 66 | 85 | 41 | 53 | 72 | 34 | 39 | 58 |
| | 19 | 60 | 55 | 50 | 55 | 51 | 46 | 48 | 46 | 42 | 41 | 41 | 37 | 34 | 34 | 32 |
| | 2400 | 78 | 96 | 114 | 67 | 85 | 104 | 55 | 73 | 93 | 46 | 58 | 79 | 39 | 43 | 64 |
| | 21 | 68 | 62 | 54 | 62 | 57 | 51 | 54 | 52 | 46 | 46 | 46 | 41 | 39 | 39 | 36 |

*Saturated suction leaving evaporator coil

Refer to 38TN product literature for system performance when matched with 070 coil.[q]

BF—Bypass Factor

SHC—Sensible Heat Capacities (1000 Btuh) shown in *Italic* type.

NOTES:

1. Direct interpolation is permissible. Do not extrapolate.
2. Fan motor heat has not been deducted.
3. SHC is based on 80°F db temperature of air entering the evaporator coil. Below 80°F db, subtract (corr factor x cfm) from SHC. Above 80°F db, add (correction factor x cfm) to SHC.
4. All data points are based on 10°F superheat leaving coil, and use of thermal expansion valve device.

| BYPASS FACTOR | ENTERING AIR DRY BULB TEMPERATURE (°F) | | | | | |
|---------------|--|------|------|------|------|-------------------------|
| | 79 | 78 | 77 | 76 | 75 | UNDER 75 |
| | 81 | 82 | 83 | 84 | 84 | Over 85 |
| | Correction Factor | | | | | |
| 0.10 | 0.98 | 1.96 | 2.94 | 3.92 | 4.91 | Use formula shown below |
| 0.20 | 0.87 | 1.74 | 2.62 | 3.49 | 4.36 | |
| 0.30 | 0.76 | 1.53 | 2.29 | 3.05 | 3.82 | |

Interpolation is permissible.

$$\text{Correction Factor} = 1.09 \times (1 - \text{BF}) \times (\text{db} - 80)$$

Carrier accessories

| ITEM | ACCESSORY PART NO.* | COIL SIZE USED WITH |
|---------------------------------|---------------------|------------------------|
| Upflow and Downflow | KCAKC0106NDR | A018, A024, A030, W024 |
| 6-Pack Coil Casings (insulated) | KCAKC0206NDR | W030, A036 |
| | KCAKC0306NDR | W042, W048, A060 |
| | KCAKC0406NDR | W060, A070 |
| | KCAKC0506NDR | A042, C048 |

*Factory-authorized and listed, field installed.

COIL STATIC PRESSURE DROP (in. wc)

| UNIT SIZE | | AIR QUANTITY (CFM) | | | | | | |
|--------------|------------|--------------------|------|------|------|------|------|------|
| | | 400 | 500 | 600 | 700 | 800 | 900 | 1000 |
| A018 | WET DRY | 0.09 | 0.13 | 0.19 | 0.26 | — | — | — |
| | | 0.08 | 0.11 | 0.13 | 0.20 | — | — | — |
| A024 | WET DRY | 0.13 | 0.18 | 0.24 | 0.31 | — | — | — |
| | | 0.10 | 0.13 | 0.17 | 0.21 | — | — | — |
| A030 W030 | WET DRY | 0.12 | 0.16 | 0.19 | 0.24 | 0.28 | 0.34 | — |
| | | 0.09 | 0.12 | 0.15 | 0.24 | 0.22 | 0.26 | — |
| A036 W036 | WET DRY | 0.16 | 0.20 | 0.24 | 0.28 | 0.33 | — | — |
| | | 0.14 | 0.17 | 0.21 | 0.24 | 0.28 | — | — |
| A042 W042 | WET DRY | 0.15 | 0.18 | 0.22 | 0.26 | 0.30 | 0.34 | — |
| | | 0.13 | 0.15 | 0.17 | 0.20 | 0.23 | 0.26 | — |
| A048 W048 | WET DRY | 0.21 | 0.24 | 0.27 | 0.31 | 0.35 | — | — |
| | | 0.17 | 0.19 | 0.22 | 0.25 | 0.27 | — | — |
| C048 | WET DRY | 0.18 | 0.22 | 0.26 | 0.30 | 0.34 | — | — |
| | | 0.15 | 0.17 | 0.20 | 0.23 | 0.26 | — | — |
| A060 | WET DRY | 0.24 | 0.27 | 0.31 | 0.34 | 0.38 | — | — |
| | | 0.20 | 0.22 | 0.25 | 0.27 | 0.30 | — | — |
| W060 A070 | WET DRY | 0.17 | 0.19 | 0.21 | 0.23 | 0.25 | 0.27 | 0.30 |
| | | 0.11 | 0.13 | 0.14 | 0.16 | 0.17 | 0.18 | 0.21 |

NOTES:

1. All units have sweat suction tube connection and flare fitting liquid tube connection. For 1-1/8-in. system suction tube, 3/4- x 1-1/8-in. suction tube connection adapter is available as accessory.
2. Check-Flo-Rater pistons (sized for matched cooling-only systems). Refer to outdoor unit installation instructions for pistons required for other systems.
3. The CD5A, CD5B, CC5A coils can be used in any properly designed system using refrigerant 22.
4. Before using maximum cfm shown in table, check coil static pressure drop to ensure system blower can provide necessary static pressure needed for coil and duct systems.

INDOOR COIL PISTONS

| UNIT | FACTORY-INSTALLED INDOOR PISTON SIZE |
|---|---|
| CD5A/CD5BA018 CC5AA018 | 52 |
| CD5A/CD5BA024, W024 CC5AA024, W024 | 59 |
| CD5A/CD5BA030, W030 CC5AA030, W030 | 67 |
| CD5A/CD5BA036, W036 CC5AA036 | 70 |
| CD5A/CD5BW042, A042 CC5AW042, A042, A043, W043 | 78 |
| CD5A/CD5BW048, C048 CC5AW048, C048 | 84 |
| CD5A/CD5BA060 CC5AA060 | 90 |
| CD5A/CD5BW060 CC5AW060 | 90 |
| CD5A/CD5BA070 | 109 |



Printed on recycled paper.

Carrier Corporation • Syracuse, New York 13221

5-94



**UNITED
TECHNOLOGIES**
CARRIER

Manufacturer reserves the right to discontinue, or change at any time, specifications or designs without notice and without incurring obligations.

| | | |
|------|----|----|
| Book | 1 | 4 |
| Tab | 3c | 2c |

Page 8

Catalog No. 92-32CC-5A3C

Printed in U.S.A.

PC 101

Form CC5A-3PD
Replaces: CC5A-2PD