



**TRANE™**

TTB-D-7

# Split System Cooling Product Data

---

**XB 1000**  
TTB012-060C



---

**PUB. NO. 22-1689-02-797 (EN)**



## General Features

---

### Split System Cooling Units . . . Designed With Your Needs In Mind.

TTB Split systems represent a new approach to designing products for The Trane Company. The design team's mission is ". . . to bring a system to the marketplace that will meet your job requirements every time" . . . And at a competitive price.

Trane's experienced design team used the newest computer technology and an entirely new manufacturing process to develop a new standard in split systems. Couple the Trane reputation for quality and reliability in split system air conditioners with improvements in efficiency, flexibility and installation ease . . . and you have systems that prove "It's Hard to Stop a Trane".

#### Manufacturing Control

Trane's exclusive control over the design and manufacturing of all major components is unique in the industry. This approach assures us total control over both the quality and reliability of these components. It also allows us to custom match components to deliver the best in split system performance.

#### Designing the Details

Careful attention was given to designing the details — from control wiring to the access panels. TTB units feature time-saving color coded wiring and removable panels which allow complete access to all major components and controls. All outdoor units feature external high and low pressure gauge port connections, and service valves for easy diagnosing and servicing of the unit are provided.

#### Standardized Cabinets

In addition all cabinets have been standardized; so when you are servicing an outdoor unit or an air handler all components are in the same location from unit to unit.

#### UL Listed and CSA Certified

Trane meets or exceeds all nationally recognized agency safety and design standards. Each unit is UL approved, and labeled in accordance to UL Standards: 1995, including approval for use in Canada. Each unit is rated in accordance with ANSI ARI Standard 210/240 and 270.



# Contents

---

<b>Feature Summary</b>	<b>2</b>
<b>Features and Benefits</b>	<b>4</b>
Optional Equipment	
Low Outdoor Ambient Cooling	
Standard Capacity Rating Conditions	
<b>Selection Procedure</b>	<b>6</b>
Model Number Nomenclature	
<b>General Data</b>	<b>7</b>
TTB012C100A	
TTB018C100A	
TTB024C100A	
TTB030C100A	
TTB036C100A	
TTB042C100A	
TTB048C100A	
TTB060C100B	
<b>Ratings With Auxiliary Devices</b>	<b>20</b>
<b>Electrical Data</b>	<b>23</b>
<b>Dimensions</b>	<b>25</b>
<b>Mechanical Specifications Options</b>	<b>28</b>



## Features and Benefits

---

- High efficiency Climatuff® compressor
- Spine Fin™ aluminum outdoor coil
- Braze refrigerant connection
- Multi-use service valves
- Steel cabinet, full coil protection
- Powder paint covers uniformly to resist rust & corrosion
- Attractive silver gray color
- Decorative steel top
- Top cover/motor mount/grille combined
- Liquid line filter-drier
- Single side service access
- Vertical air discharge
- Factory supplied charge of HCFC-22
- Weatherproofed electrical controls
- Low ambient cooling to 40°F. with accessory AY28X079
- **5 year limited warranty on compressor & coil, 1 year on parts**
- **Optional extended compressor warranty for 6-10 years**



# Features and Benefits

## OPTIONAL EQUIPMENT

### OPTIONAL EQUIPMENT FOR CONDENSING UNITS (Check mark [✓] indicates accessories included).

Indoor Thermostats — Electronic Setback .....	TAYSTAT300 [ ]
Heating/Cooling — Horizontal .....	AY28X092 [ ]
Cooling Only with Fan Switch .....	BAYSTAT304 [ ]
Heating/Cooling — Vertical .....	BAYSTAT305 [ ]
Thermostat Locking Cover <sup>①</sup> .....	BAY28X190 [ ]
Outdoor Thermostats 46°F. to -10°F. (Adjustable) (TTB018-060C) .....	TAYSTAT250A [ ]
Evaporator Defrost Control .....	AY28X079 [ ]
Indoor Fan Delay Relay Kit .....	BAY24X045 [ ]
Quick-Start Kit (TTB030-060C) .....	BAYKSKT250A [ ]
Quick-Start Kit (TTB012-024C) .....	BAY41X228 [ ]
Isolators .....	BAYISLT100 [ ]

<sup>①</sup> Not used with programmable thermostats

### BRAZED TUBING REFRIGERANT LINE SETS (All Suction Lines are Insulated.)

5/8" ODM (90° bend, one end), 5/8" & 1/4" tubing .....	TAYREFLN1_* [ ]
3/4" ODM (90° bend, one end), 3/4" & 5/16" tubing .....	TAYREFLN2_* [ ]
7/8" ODM (90° bend, one end), 7/8" & 3/8" tubing .....	TAYREFLN3_* [ ]
1-1/8" ODM (90° bend, one end), 1-1/8" & 3/8" tubing .....	TAYREFLN4_* [ ]

\*Line lengths: 15, 20, 25, 30, 40 & 50 ft. Insert desired line length in catalog number at right for the complete number.

Example: TAYREFLN220

## LOW OUTDOOR AMBIENT COOLING

<b>Low Ambient Cooling</b>	<b>As Manufactured</b>	<b>Evaporator Defrost Control</b>
FCCV Accutron	55°F	40°F
Thermal Expansion Valve (TXV)	45°F	30°F

## A.R.I. STANDARD CAPACITY RATING CONDITIONS

**ANSI A.R.I. STANDARD 210/240 RATING CONDITIONS** — (A) Cooling 80°F. D.B., 67°F. W.B. air entering indoor coil, 95°F. D.B. air entering outdoor air coil.



# Selection Procedure

## Model Number Nomenclature

**1    2    3    4    5    6    7    8    9    10   11**  
**T    T    B    0    4    2    C    1    0    0    A**

**PRODUCT TYPE**

- Split Cooling -  
TTA, TTB, TTN, TTR, TTP, TTX, TTY
- Split Heat Pump -  
TWA, TWN, TWP, TWR, TWX, TWY
- Package Cooling -  
TCC, TCH, TCD, TCX, TCM, TCY
- Package Heat Pump - WCC, WCD, WCH,  
WCM, WCX, DCX, WCY
- Air Handler - TWV, TWH, TWE
- Gas/Electric - YCC, YCD, YCH, YCX, YCY
- Coils - TXA, TXE, TFX, TXC, CCB, CUB

**SPLIT SYSTEM COUPLING SYSTEMS**

- 1 - 5 TONS**
- 0 - Brazed

**PRIMARY CAPACITY**

Example: 042 = 42 MBTUH = 3-1/2 Tons

**MAJOR DESIGN MODIFICATION**

**POWER SUPPLY & FUEL**

**SECONDARY FUNCTIONS**

- Gas/Electric - Gas Heating
- Furnaces - Cooling Airflow
- Air Handlers - Flow Control

**MINOR DESIGN MODIFICATION**



# General Data

## TTB012C100A

OUTDOOR UNIT <sup>①②</sup>	TTB012C100A
<b>POWER CONNS.</b> — V/PH/Hz	200/230/1/60
MIN. BRCH. CIR. AMPACITY <sup>③</sup>	11
BR. CIR. } MAX.(AMPS)	15
PROT. RTG. } RECMD. (AMPS)	15
<b>NOISE RATING (DECIBELS) <sup>②</sup></b>	82
<b>COMPRESSOR</b>	CLIMATUFF®
NO. USED - NO. SPEEDS	1 - 1
VOLTS/PH/Hz	200/230/1/60
R.L. AMPS - L.R. AMPS	7.0 - 45
BRCH. CIR. SELEC. CUR. AMPS	8.0
<b>OUTDOOR FAN</b> — TYPE	PROPELLER
DIA. (IN.) - NO. USED	13.7 - 1
TYPE DRIVE - NO. SPEEDS	DIRECT - 1
CFM @ 0.0 IN. W.G. <sup>④</sup>	1485
NO. MOTORS - HP	1 - 1/8
MOTOR SPEED R.P.M.	1650
VOLTS/PH/Hz	200/230/1/60
F.L. AMPS	0.83
<b>OUTDOOR COIL</b> — TYPE	SPINE FIN™
ROWS - F.P.I.	1 - 24
FACE AREA (SQ. FT.)	6.62
TUBE SIZE (IN.)	3/8
<b>REFRIGERANT</b>	
LBS. — R-22 (O.D. UNIT) <sup>⑤</sup>	2-LBS.,12-OZ.
FACTORY SUPPLIED	YES
LINE SIZE - IN. O.D. GAS <sup>⑥</sup>	5/8
LINE SIZE - IN. O.D. LIQ. <sup>⑥</sup>	1/4
<b>FCCV</b> — RESTRICTOR ORIFICE SIZE	0.049
<b>DIMENSIONS</b>	H X W X D
OUTDOOR UNIT - CRATED (IN.)	24-3/4 X 20 X 20
UNCRATED	SEE OUTLINE DWG.
<b>WEIGHT</b>	
SHIPPING (LBS.)	118
NET (LBS.)	112

- ① CERTIFIED IN ACCORDANCE WITH A.R.I. STANDARD 210/240.
- ② RATED IN ACCORDANCE WITH A.R.I. STANDARD 270.



SPLIT SYSTEM

- ③ CALCULATED IN ACCORDANCE WITH NATL. ELECTRIC CODE. SUITABLE FOR USE WITH HACR CIRCUIT BREAKERS OR FUSES.
- ④ STANDARD AIR - DRY COIL - OUTDOOR
- ⑤ THIS VALUE APPROXIMATE. FOR MORE PRECISE VALUE SEE UNIT NAMEPLATE AND SERVICE INSTRUCTION.
- ⑥ MAX. LINEAR LENGTH 80 FT; MAX. LIFT - SUCTION 60 FT; MAX. LIFT - LIQUID 60 FT. MAX. LENGTH OF PRECHARGED TUBING 50 FT. FOR GREATER LENGTH REFER TO REFRIGERANT PIPING MANUAL PUB. NO. 32-3009.



### CONDENSING UNIT WITH COOLING COILS

	CCBA18A4ACC	CUBA18A4ACC	TXA018C4	TXA024C4	TXA025C4	TXC018C4	TXC024C4
<b>EXPANSION TYPE</b>	FIXED ORIFICE	FIXED ORIFICE	FACT INS 49	CHG TO 49	CHG TO 49	FACT INS 49	CHG TO 49
<b>RATINGS (COOLING) <sup>①</sup></b>							
BTUH (TOTAL)	15800	15800	14800	14400	14700	14800	14400
BTUH (SENSIBLE)	10000	10000	9600	9200	9600	9600	9200
INDOOR AIRFLOW (CFM)	450	450	525	450	450	525	450
SYSTEM POWER (KW)	1.73	1.73	1.61	1.55	1.56	1.61	1.55
SEER (BTU/WATT-HR.)	10.00	10.00	10.00	10.00	10.05	10.00	10.00

	TXC024D4	TXC025C4	TXC025D4	TXH025A4
<b>EXPANSION TYPE</b>	CHG TO 49	CHG TO 49	CHG TO 49	CHG TO 49
<b>RATINGS (COOLING) <sup>①</sup></b>				
BTUH (TOTAL)	14400	14700	14700	16200
BTUH (SENSIBLE)	9200	9600	9600	10300
INDOOR AIRFLOW (CFM)	450	450	450	450
SYSTEM POWER (KW)	1.55	1.56	1.56	1.74
SEER (BTU/WATT-HR.)	10.00	10.05	10.05	10.00

### CONDENSING UNIT WITH AIR HANDLERS

	TWE018C14	TWE024C14	TWG018A14	TWG025A14	TWV018B14	TWV025B14
<b>EXPANSION TYPE</b>	FACT INS 49	CHG TO 49	FACT INS 49	CHG TO 49	FACT INS 49	CHG TO 49
<b>RATINGS (COOLING) <sup>①</sup></b>						
BTUH (TOTAL)	14600	14400	14500	14200	15100	14900
BTUH (SENSIBLE)	9300	9200	9400	9300	10100	9900
INDOOR AIRFLOW (CFM)	450	450	450	450	450	450
SYSTEM POWER (KW)	1.56	1.55	1.56	1.49	1.56	1.62
SEER (BTU/WATT-HR.)	10.20	10.20	10.00	10.00	10.40	10.00

<sup>1</sup>See page 20 for combinations with Auxiliary Devices.



# General Data

# TTB018C100A

OUTDOOR UNIT ①②	TTB018C100A
<b>POWER CONNS.</b> — V/PH/HZ	200/230/1/60
MIN. BRCH. CIR. AMPACITY ③	11
BR. CIR. } MAX.(AMPS)	15
PROT. RTG. } RECMD.(AMPS)	15
<b>NOISE RATING (DECIBELS) ②</b>	82
<b>COMPRESSOR</b>	CLIMATUFF®
NO. USED - NO. SPEEDS	1 - 1
VOLTS/PH/HZ	200/230/1/60
R.L. AMPS - L.R. AMPS	7.0 - 45
BRCH. CIR. SELEC. CUR. AMPS	8.0
<b>OUTDOOR FAN — TYPE</b>	PROPELLER
DIA. (IN.) - NO. USED	13.7 - 1
TYPE DRIVE - NO. SPEEDS	DIRECT - 1
CFM @ 0.0 IN. W.G. ④	1485
NO. MOTORS - HP	1 - 1/8
MOTOR SPEED R.P.M.	1650
VOLTS/PH/HZ	200/230/1/60
F.L. AMPS	0.83
<b>OUTDOOR COIL — TYPE</b>	SPINE FIN™
ROWS - F.P.I.	1 - 24
FACE AREA (SQ. FT.)	6.62
TUBE SIZE (IN.)	3/8
<b>REFRIGERANT</b>	
LBS. — R-22 (O.D. UNIT) ⑤	3-LBS., 3-OZ.
FACTORY SUPPLIED	YES
LINE SIZE - IN. O.D. GAS ⑥	5/8
LINE SIZE - IN. O.D. LIQ. ⑥	1/4
<b>FCCV — RESTRICTOR ORIFICE SIZE</b>	0.049
<b>DIMENSIONS</b>	H X W X D
OUTDOOR UNIT - CRATED (IN.)	24 3/4 X 20 X 20
UNCRATED	SEE OUTLINE DWG.
<b>WEIGHT</b>	
SHIPPING (LBS.)	118
NET (LBS.)	112

- ① CERTIFIED IN ACCORDANCE WITH A.R.I. STANDARD 210/240.
- ② RATED IN ACCORDANCE WITH A.R.I. STANDARD 270.



SPLIT SYSTEM

- ③ CALCULATED IN ACCORDANCE WITH NATL. ELECTRIC CODE. SUITABLE FOR USE WITH HACR CIRCUIT BREAKERS OR FUSES.
- ④ STANDARD AIR - DRY COIL - OUTDOOR
- ⑤ THIS VALUE APPROXIMATE. FOR MORE PRECISE VALUE SEE UNIT NAMEPLATE AND SERVICE INSTRUCTION.
- ⑥ MAX. LINEAR LENGTH 80 FT; MAX. LIFT - SUCTION 60 FT; MAX. LIFT - LIQUID 60 FT. MAX. LENGTH OF PRECHARGED TUBING 50 FT. FOR GREATER LENGTH REFER TO REFRIGERANT PIPING MANUAL PUB. NO. 32-3009.



## CONDENSING UNIT WITH COOLING COILS

	CCBA18A4ACC	CCBA24A4ACC	CUBA18A4ACC	CUBA24A4ACC	TXA018C4	TXA024C4	TXA025C4
<b>EXPANSION TYPE</b>	FIXED ORIFICE	FIXED ORIFICE	FIXED ORIFICE	FIXED ORIFICE	FACT INS 49	CHG TO 49	CHG TO 49
<b>RATINGS (COOLING) ①</b>							
BTUH (TOTAL)	16600	16600	16600	16600	17000	16800	17100
BTUH (SENSIBLE)	11100	11500	11100	11500	11400	11600	12700
INDOOR AIRFLOW (CFM)	600	620	600	620	600	630	640
SYSTEM POWER (KW)	1.80	1.79	1.80	1.79	1.82	1.81	1.83
SEER (BTU/WATT-HR.)	10.00	10.10	10.00	10.10	10.00	10.05	10.00

	TXC018C4	TXC024C4	TXC024D4	TXC025C4	TXC025D4	TXH025A4
<b>EXPANSION TYPE</b>	FACT INS 49	CHG TO 49	CHG TO 49	CHG TO 49	CHG TO 49	CHG TO 49
<b>RATINGS (COOLING) ①</b>						
BTUH (TOTAL)	16600	16800	16800	17100	17100	17200
BTUH (SENSIBLE)	11100	11600	11600	12700	12700	11900
INDOOR AIRFLOW (CFM)	600	630	630	640	640	640
SYSTEM POWER (KW)	1.80	1.81	1.81	1.83	1.83	1.85
SEER (BTU/WATT-HR.)	10.00	10.05	10.05	10.00	10.00	10.00

## CONDENSING UNIT WITH AIR HANDLERS

	TWE018C14	TWE024C14	TWG018A14	TWG025A14	TWV018B14	TWV024B14	TWV025B14
<b>EXPANSION TYPE</b>	FACT INS 49	CHG TO 49	FACT INS 49	CHG TO 49	FACT INS 49	CHG TO 49	CHG TO 49
<b>RATINGS (COOLING) ①</b>							
BTUH (TOTAL)	17100	16800	16500	16600	17300	17400	17500
BTUH (SENSIBLE)	11600	11600	11400	12100	12700	13300	13400
INDOOR AIRFLOW (CFM)	600	625	600	620	600	650	655
SYSTEM POWER (KW)	1.77	1.79	1.77	1.74	1.78	1.86	1.83
SEER (BTU/WATT-HR.)	10.00	10.00	10.00	10.00	10.40	10.15	10.40

\*See page 20 for combinations with Auxiliary Devices.





# General Data

## TTB024C100A

<b>OUTDOOR UNIT</b> ①②	<b>TTB024C100A</b>
<b>POWER CONNS.</b> — V/PH/Hz	208/230/1/60
MIN. BRCH. CIR. AMPACITY ③	15
BR. CIR. } MAX.(AMPS)	25
PROT. RTG. } RECMD. (AMPS)	20
<b>NOISE RATING (DECIBELS)</b> ②	80
<b>COMPRESSOR</b>	CLIMATUFF®
NO. USED - NO. SPEEDS	1 - 1
VOLTS/PH/Hz	200/230/1/60
R.L. AMPS - L.R. AMPS	10.0 - 60
BRCH. CIR. SELEC. CUR. AMPS	11.6
<b>OUTDOOR FAN</b> — TYPE	PROPELLER
DIA. (IN.) - NO. USED	13.7 - 1
TYPE DRIVE - NO. SPEEDS	DIRECT - 1
CFM @ 0.0 IN. W.G. ④	1425
NO. MOTORS - HP	1 - 1/8
MOTOR SPEED R.P.M.	1650
VOLTS/PH/Hz	200/230/1/60
FL. AMPS	0.83
<b>OUTDOOR COIL</b> — TYPE	SPINE FIN™
ROWS - F.P.I.	1 - 24
FACE AREA (SQ. FT.)	6.62
TUBE SIZE (IN.)	3/8
<b>REFRIGERANT</b>	
LBS. — R-22 (O.D. UNIT) ⑤	3-LBS., 10-OZ.
FACTORY SUPPLIED	YES
LINE SIZE - IN. O.D. GAS ⑥	3/4
LINE SIZE - IN. O.D. LIQ. ⑥	5/16
<b>FCCV</b> — RESTRICTOR ORIFICE SIZE	0.057
<b>DIMENSIONS</b>	H X W X D
OUTDOOR UNIT - CRATED (IN.)	24-3/4 X 20 X 20
UNCRATED	SEE OUTLINE DWG.
<b>WEIGHT</b>	
SHIPPING (LBS.)	130
NET (LBS.)	125

- ① CERTIFIED IN ACCORDANCE WITH A.R.I. STANDARD 210/240.
- ② RATED IN ACCORDANCE WITH A.R.I. STANDARD 270.



SPLIT SYSTEM

- ③ CALCULATED IN ACCORDANCE WITH NATL. ELECTRIC CODE. SUITABLE FOR USE WITH HACR CIRCUIT BREAKERS OR FUSES.
- ④ STANDARD AIR - DRY COIL - OUTDOOR
- ⑤ THIS VALUE APPROXIMATE. FOR MORE PRECISE VALUE SEE UNIT NAMEPLATE AND SERVICE INSTRUCTION.
- ⑥ MAX. LINEAR LENGTH 80 FT; MAX. LIFT - SUCTION 60 FT; MAX. LIFT - LIQUID 60 FT. MAX. LENGTH OF PRECHARGED TUBING 50 FT. FOR GREATER LENGTH REFER TO REFRIGERANT PIPING MANUAL PUB. NO. 32-3009.



### CONDENSING UNIT WITH COOLING COILS

	CCBA24A4ACC	CCBA30A4ACC	CCBB30A4ACC	CUBA24A4ACC	CUBA30A4ACC	CUBB30A4ACC	TXA024C4
<b>EXPANSION TYPE</b>	FIXED ORIFICE	FIXED ORIFICE	FIXED ORIFICE	FIXED ORIFICE	FIXED ORIFICE	FIXED ORIFICE	FACT INS 57
<b>RATINGS (COOLING)</b> ①							
BTUH (TOTAL)	22000	21200	22000	22000	21200	22000	22200
BTUH (SENSIBLE)	14900	14500	16300	14900	14500	16300	15000
INDOOR AIRFLOW (CFM)	800	775	800	800	775	800	800
SYSTEM POWER (KW)	2.40	2.36	2.39	2.40	2.36	2.39	2.44
SEER (BTU/WATT-HR.)	10.00	10.00	10.00	10.00	10.00	10.00	10.00

	TXA025C4	TXA030C4	TXA031C4	TXA035C4	TXA036C4	TXA037C4	TXC024C4
<b>EXPANSION TYPE</b>	FACT INS 57	CHG TO 57	CHG TO 57	CHG TO 57	CHG TO 57	CHG TO 57	FACT INS 57
<b>RATINGS (COOLING)</b> ①							
BTUH (TOTAL)	21800	22200	22400	22000	22800	22800	21400
BTUH (SENSIBLE)	15500	15500	16400	15200	16900	16900	14500
INDOOR AIRFLOW (CFM)	800	825	835	825	850	850	800
SYSTEM POWER (KW)	2.37	2.40	2.41	2.37	2.43	2.43	2.34
SEER (BTU/WATT-HR.)	10.00	10.00	10.00	10.00	10.00	10.00	10.00

	TXC024D4	TXC025C4	TXC025D4	TXC030C4	TXC030D4	TXC031C4	TXC031D4
<b>EXPANSION TYPE</b>	FACT INS 57	FACT INS 57	FACT INS 57	CHG TO 57	CHG TO 57	CHG TO 57	CHG TO 57
<b>RATINGS (COOLING)</b> ①							
BTUH (TOTAL)	21400	21800	21800	22200	22200	22400	22400
BTUH (SENSIBLE)	14500	15500	15500	15500	15500	16400	16400
INDOOR AIRFLOW (CFM)	800	800	800	825	825	835	835
SYSTEM POWER (KW)	2.34	2.37	2.37	2.40	2.40	2.41	2.41
SEER (BTU/WATT-HR.)	10.00	10.00	10.00	10.00	10.00	10.00	10.00

\*See page 20 for combinations with Auxiliary Devices.



# General Data

# TTB024C100A

## CONDENSING UNIT WITH COOLING COILS

	TXC035C4	TXC035D4	TXC036C4	TXC036D4	TXC037C4	TXH025A4	TXH033A4
<b>EXPANSION TYPE</b>	CHG TO 57	CHG TO 57	CHG TO 57	CHG TO 57	CHG TO 57	FACT INS 57	FACT INS 57
<b>RATINGS (COOLING) ①</b>							
BTUH (TOTAL)	22000	22000	22800	22800	22800	21400	22400
BTUH (SENSIBLE)	15200	15200	16900	16900	16900	14500	16400
INDOOR AIRFLOW (CFM)	825	825	850	850	850	800	840
SYSTEM POWER (KW)	2.37	2.37	2.43	2.43	2.43	2.33	2.38
SEER (BTU/WATT-HR.)	10.00	10.00	10.00	10.00	10.00	10.00	10.00

## CONDENSING UNIT WITH AIR HANDLERS

	TWE018C14	TWE024C14	TWE030C14	TWE036C14	TWG018A14	TWG025A14	TWG030A14
<b>EXPANSION TYPE</b>	CHG TO 57	CHG TO 57	CHG TO 57	CHG TO 57	CHG TO 57	CHG TO 57	CHG TO 57
<b>RATINGS (COOLING) ①</b>							
BTUH (TOTAL)	20800	21000	21800	22600	20400	21000	21800
BTUH (SENSIBLE)	13500	14300	15700	16400	13600	14700	15400
INDOOR AIRFLOW (CFM)	675	775	810	835	675	785	815
SYSTEM POWER (KW)	2.26	2.30	2.38	2.44	2.24	2.23	2.36
SEER (BTU/WATT-HR.)	10.00	10.00	10.05	10.15	10.00	10.00	10.00

	TWV018B14	TWV024B14	TWV025B14	TWV030B14	TWV036B14
<b>EXPANSION TYPE</b>	CHG TO 57	CHG TO 57	CHG TO 57	CHG TO 57	CHG TO 57
<b>RATINGS (COOLING) ①</b>					
BTUH (TOTAL)	21600	22200	22400	23000	23000
BTUH (SENSIBLE)	14900	16300	16500	17800	17700
INDOOR AIRFLOW (CFM)	675	800	800	850	860
SYSTEM POWER (KW)	2.34	2.40	2.38	2.43	2.50
SEER (BTU/WATT-HR.)	10.20	10.20	10.40	10.40	10.10

\*See page 20 for combinations with Auxiliary Devices.



# General Data

## TTB030C100A

OUTDOOR UNIT ①②	TTB030C100A
<b>POWER CONNS.</b> — V/PH/Hz	200/230/1/60
MIN. BRCH. CIR. AMPACITY ③	18
BR. CIR. } MAX.(AMPS)	30
PROT. RTG. } RECMD. (AMPS)	30
<b>NOISE RATING (DECIBELS) ②</b>	78
<b>COMPRESSOR</b>	CLIMATUFF®
NO. USED - NO. SPEEDS	1 - 1
VOLTS/PH/Hz	200/230/1/60
R.L. AMPS - L.R. AMPS	13.0 - 75
BRCH. CIR. SELEC. CUR. AMPS	13.0
<b>OUTDOOR FAN — TYPE</b>	PROPELLER
DIA. (IN.) - NO. USED	18 - 1
TYPE DRIVE - NO. SPEEDS	DIRECT - 1
CFM @ 0.0 IN. W.G. ④	2300
NO. MOTORS - HP	1 - 1/4
MOTOR SPEED R.P.M.	1075
VOLTS/PH/Hz	200/230/1/60
FL. AMPS	1.30
<b>OUTDOOR COIL — TYPE</b>	SPINE FIN™
ROWS - F.P.I.	1 - 24
FACE AREA (SQ. FT.)	10.96
TUBE SIZE (IN.)	3/8
<b>REFRIGERANT</b>	
LBS. — R-22 (O.D. UNIT) ⑤	4-LBS., 6-OZ.
FACTORY SUPPLIED	YES
LINE SIZE - IN. O.D. GAS ⑥	3/4
LINE SIZE - IN. O.D. LIQ. ⑥	5/16
<b>FCCV — RESTRICTOR ORIFICE SIZE</b>	0.065
<b>DIMENSIONS</b>	H X W X D
OUTDOOR UNIT - CRATED (IN.)	26-3/8 X 26-7/8 X 26-7/8
UNCRATED	SEE OUTLINE DWG.
<b>WEIGHT</b>	
SHIPPING (LBS.)	176
NET (LBS.)	166

- ① CERTIFIED IN ACCORDANCE WITH A.R.I. STANDARD 210/240.
- ② RATED IN ACCORDANCE WITH A.R.I. STANDARD 270.



SPLIT SYSTEM

- ③ CALCULATED IN ACCORDANCE WITH NATL. ELECTRIC CODE. SUITABLE FOR USE WITH HACR CIRCUIT BREAKERS OR FUSES.
- ④ STANDARD AIR - DRY COIL - OUTDOOR
- ⑤ THIS VALUE APPROXIMATE. FOR MORE PRECISE VALUE SEE UNIT NAMEPLATE AND SERVICE INSTRUCTION.
- ⑥ MAX. LINEAR LENGTH 80 FT; MAX. LIFT - SUCTION 60 FT; MAX. LIFT - LIQUID 60 FT. MAX. LENGTH OF PRECHARGED TUBING 50 FT. FOR GREATER LENGTH REFER TO REFRIGERANT PIPING MANUAL PUB. NO. 32-3009.



### CONDENSING UNIT WITH COOLING COILS

	CCBA30A4ACC	CCBA36A4ACC	CCBB30A4ACC	CCBB36A4ACC	CUBA30A4ACC	CUBA36A4ACC	CUBB30A4ACC
<b>EXPANSION TYPE</b>	FIXED ORIFICE	FIXED ORIFICE	FIXED ORIFICE	FIXED ORIFICE	FIXED ORIFICE	FIXED ORIFICE	FIXED ORIFICE
<b>RATINGS (COOLING) ①</b>							
BTUH (TOTAL)	26600	27400	27800	27600	26600	27400	27800
BTUH (SENSIBLE)	17300	18600	19500	19800	17300	18600	19500
INDOOR AIRFLOW (CFM)	950	1025	1000	1035	950	1025	1000
SYSTEM POWER (KW)	2.89	2.96	2.96	2.97	2.89	2.96	2.96
SEER (BTU/WATT-HR.)	10.00	10.00	10.05	10.00	10.00	10.00	10.05

	CUBB36A4ACC	TXA024C4	TXA025C4	TXA030C4	TXA031C4	TXA035C4	TXA036C4
<b>EXPANSION TYPE</b>	FIXED ORIFICE	CHG TO 65	CHG TO 65	CHG TO 65	CHG TO 65	CHG TO 65	CHG TO 65
<b>RATINGS (COOLING) ①</b>							
BTUH (TOTAL)	27600	26600	27000	27800	28200	28200	29000
BTUH (SENSIBLE)	19800	17100	18100	18500	19700	19300	21200
INDOOR AIRFLOW (CFM)	1035	900	900	1000	1000	1055	1085
SYSTEM POWER (KW)	2.97	2.88	2.89	2.97	3.08	3.03	3.07
SEER (BTU/WATT-HR.)	10.00	10.00	10.00	10.05	10.00	10.00	10.05

	TXA037C4	TXA042C4	TXA043C4	TXC024C4	TXC024D4	TXC025C4	TXC025D4
<b>EXPANSION TYPE</b>	CHG TO 65	CHG TO 65	CHG TO 65	CHG TO 65	CHG TO 65	CHG TO 65	CHG TO 65
<b>RATINGS (COOLING) ①</b>							
BTUH (TOTAL)	29000	29200	29200	26600	26600	27000	27000
BTUH (SENSIBLE)	21200	21400	21400	17100	17100	18100	18100
INDOOR AIRFLOW (CFM)	1085	1095	1095	900	900	900	900
SYSTEM POWER (KW)	3.07	3.07	3.07	2.88	2.88	2.89	2.89
SEER (BTU/WATT-HR.)	10.05	10.10	10.10	10.00	10.00	10.00	10.00

\*See pages 20 and 21 for combinations with Auxiliary Devices.



# General Data

# TTB030C100A

## CONDENSING UNIT WITH COOLING COILS

	TXC030C4	TXC030D4	TXC031C4	TXC031D4	TXC031E5	TXC035C4	TXC035D4
<b>EXPANSION TYPE</b>	CHG TO 65	CHG TO 65	CHG TO 65	CHG TO 65	TXV-B	CHG TO 65	CHG TO 65
<b>RATINGS (COOLING) ①</b>							
BTUH (TOTAL)	27800	27800	28200	28200	28600	28200	28200
BTUH (SENSIBLE)	18500	18500	19700	19700	20000	19300	19300
INDOOR AIRFLOW (CFM)	1000	1000	1000	1000	1000	1055	1055
SYSTEM POWER (KW)	2.97	2.97	3.08	3.08	2.98	3.03	3.03
SEER (BTU/WATT-HR.)	10.05	10.05	10.00	10.00	10.30	10.00	10.00

	TXC036C4	TXC036D4	TXC036E5	TXC037C4	TXC037E5	TXC042C4	TXC043C4
<b>EXPANSION TYPE</b>	CHG TO 65	CHG TO 65	TXV-B	CHG TO 65	TXV-B	CHG TO 65	CHG TO 65
<b>RATINGS (COOLING) ①</b>							
BTUH (TOTAL)	29000	29000	29600	29000	29600	29200	29200
BTUH (SENSIBLE)	21200	21200	21900	21200	21900	21400	21400
INDOOR AIRFLOW (CFM)	1085	1085	1110	1085	1110	1095	1095
SYSTEM POWER (KW)	3.07	3.07	3.05	3.07	3.05	3.07	3.07
SEER (BTU/WATT-HR.)	10.05	10.05	10.35	10.05	10.35	10.10	10.10

	TXH025A4	TXH033A4
<b>EXPANSION TYPE</b>	CHG TO 65	CHG TO 65
<b>RATINGS (COOLING) ①</b>		
BTUH (TOTAL)	26800	28200
BTUH (SENSIBLE)	17300	19600
INDOOR AIRFLOW (CFM)	900	1000
SYSTEM POWER (KW)	2.90	2.98
SEER (BTU/WATT-HR.)	10.00	10.10

## CONDENSING UNIT WITH AIR HANDLERS

	TWE024C14	TWE030C14	TWE036C14	TWG025A14	TWG030A14	TWG036A14	TWV025B14
<b>EXPANSION TYPE</b>	CHG TO 65	CHG TO 65	CHG TO 65	CHG TO 65	CHG TO 65	CHG TO 65	CHG TO 65
<b>RATINGS (COOLING) ①</b>							
BTUH (TOTAL)	26400	27200	28800	26200	27200	28200	27600
BTUH (SENSIBLE)	17100	18500	20400	17300	18400	19700	19000
INDOOR AIRFLOW (CFM)	900	950	1080	900	1000	1055	900
SYSTEM POWER (KW)	2.89	2.91	3.08	2.76	2.91	3.02	2.95
SEER (BTU/WATT-HR.)	10.05	10.20	10.20	10.00	10.00	10.00	10.15

	TWV030B14	TWV036B14
<b>EXPANSION TYPE</b>	CHG TO 65	CHG TO 65
<b>RATINGS (COOLING) ①</b>		
BTUH (TOTAL)	28600	29400
BTUH (SENSIBLE)	20600	22200
INDOOR AIRFLOW (CFM)	1000	1100
SYSTEM POWER (KW)	3.01	3.14
SEER (BTU/WATT-HR.)	10.40	10.15

\*See pages 20 and 21 for combinations with Auxiliary Devices.



# General Data

## TTB036C100A

OUTDOOR UNIT ①②	TTB036C100A
<b>POWER CONNS.</b> — V/PH/Hz	200/230/1/60
MIN. BRCH. CIR. AMPACITY ③	22
BR. CIR. } MAX.(AMPS)	35
PROT. RTG. } RECMD. (AMPS)	35
<b>NOISE RATING (DECIBELS) ②</b>	78
<b>COMPRESSOR</b>	CLIMATUFF®
NO. USED - NO. SPEEDS	1 - 1
VOLTS/PH/Hz	200/230/1/60
R.L. AMPS - L.R. AMPS	14 - 88
BRCH. CIR. SELEC. CUR. AMPS	16.0
<b>OUTDOOR FAN — TYPE</b>	PROPELLER
DIA. (IN.) - NO. USED	18 - 1
TYPE DRIVE - NO. SPEEDS	DIRECT - 1
CFM @ 0.0 IN. W.G. ④	2800
NO. MOTORS - HP	1 - 1/4
MOTOR SPEED R.P.M.	1075
VOLTS/PH/Hz	200/230/1/60
FL. AMPS	1.30
<b>OUTDOOR COIL — TYPE</b>	SPINE FIN™
ROWS - F.P.I.	1 - 24
FACE AREA (SQ. FT.)	14.93
TUBE SIZE (IN.)	3/8
<b>REFRIGERANT</b>	
LBS. — R-22 (O.D. UNIT) ⑤	6-LBS., 1-OZ.
FACTORY SUPPLIED	YES
LINE SIZE - IN. O.D. GAS ⑥	7/8
LINE SIZE - IN. O.D. LIQ. ⑥	3/8
<b>FCCV — RESTRICTOR ORIFICE SIZE</b>	0.071
<b>DIMENSIONS</b>	H X W X D
OUTDOOR UNIT - CRATED (IN.)	33-3/8 X 26-7/8 X 26-7/8
UNCRATED	SEE OUTLINE DWG.
<b>WEIGHT</b>	
SHIPPING (LBS.)	184
NET (LBS.)	174

- ① CERTIFIED IN ACCORDANCE WITH A.R.I. STANDARD 210/240.
- ② RATED IN ACCORDANCE WITH A.R.I. STANDARD 270.



SPLIT SYSTEM

- ③ CALCULATED IN ACCORDANCE WITH NATL. ELECTRIC CODE. SUITABLE FOR USE WITH HACR CIRCUIT BREAKERS OR FUSES.
- ④ STANDARD AIR - DRY COIL - OUTDOOR
- ⑤ THIS VALUE APPROXIMATE. FOR MORE PRECISE VALUE SEE UNIT NAMEPLATE AND SERVICE INSTRUCTION.
- ⑥ MAX. LINEAR LENGTH 80 FT; MAX. LIFT - SUCTION 60 FT; MAX. LIFT - LIQUID 60 FT. MAX. LENGTH OF PRECHARGED TUBING 50 FT. FOR GREATER LENGTH REFER TO REFRIGERANT PIPING MANUAL PUB. NO. 32-3009.



### CONDENSING UNIT WITH COOLING COILS

	CCBA36A4ACC	CCBB36A4ACC	CCBB42A4ACC	CUBA36A4ACC	CUBB36A4ACC	CUBB42A4ACC	TXA030C4
<b>EXPANSION TYPE</b>	FIXED ORIFICE	FIXED ORIFICE	FIXED ORIFICE	FIXED ORIFICE	FIXED ORIFICE	FIXED ORIFICE	CHG TO 71
<b>RATINGS (COOLING) ①</b>							
BTUH (TOTAL)	31600	31800	32000	31600	31800	32000	31600
BTUH (SENSIBLE)	20500	21400	22600	20500	21400	22600	20500
INDOOR AIRFLOW (CFM)	1100	1100	1200	1100	1100	1200	1100
SYSTEM POWER (KW)	3.31	3.31	3.35	3.31	3.31	3.35	3.31
SEER (BTU/WATT-HR.)	10.00	10.00	10.00	10.00	10.00	10.00	10.00

	TXA031C4	TXA035C4	TXA036C4	TXA037C4	TXA042C4	TXA043C4	TXA048C4
<b>EXPANSION TYPE</b>	CHG TO 71	FACT INS 71	FACT INS 71	FACT INS 71	CHG TO 71	CHG TO 71	CHG TO 71
<b>RATINGS (COOLING) ①</b>							
BTUH (TOTAL)	31800	31600	34000	34000	33400	33600	34200
BTUH (SENSIBLE)	21400	20500	23700	23700	23600	24300	25200
INDOOR AIRFLOW (CFM)	1100	1100	1200	1200	1250	1260	1280
SYSTEM POWER (KW)	3.31	3.31	3.51	3.51	3.44	3.48	3.51
SEER (BTU/WATT-HR.)	10.00	10.00	10.00	10.00	10.00	10.00	10.00

	TXA049C4	TXA050C4	TXC030C4	TXC030D4	TXC031C4	TXC031D4	TXC031E5
<b>EXPANSION TYPE</b>	CHG TO 71	CHG TO 71	CHG TO 71	CHG TO 71	CHG TO 71	CHG TO 71	TXV-B
<b>RATINGS (COOLING) ①</b>							
BTUH (TOTAL)	34200	34200	31600	31600	31800	31800	33000
BTUH (SENSIBLE)	25200	25200	20500	20500	21400	21400	22400
INDOOR AIRFLOW (CFM)	1280	1280	1100	1100	1100	1100	1100
SYSTEM POWER (KW)	3.51	3.51	3.31	3.31	3.31	3.31	3.35
SEER (BTU/WATT-HR.)	10.00	10.00	10.00	10.00	10.00	10.00	10.25

\*See page 21 for combinations with Auxiliary Devices.



# General Data

## TTB036C100A

### CONDENSING UNIT WITH COOLING COILS

	TXC035C4	TXC035D4	TXC036C4	TXC036D4	TXC036E5	TXC037C4	TXC037E5
<b>EXPANSION TYPE</b>	FACT INS 71	FACT INS 71	FACT INS 71	FACT INS 71	TXV-B	FACT INS 71	TXV-B
<b>RATINGS (COOLING) ①</b>							
BTUH (TOTAL)	31600	31600	34000	34000	33800	34000	33800
BTUH (SENSIBLE)	20500	20500	23700	23700	23800	23700	23800
INDOOR AIRFLOW (CFM)	1100	1100	1200	1200	1200	1200	1200
SYSTEM POWER (KW)	3.31	3.31	3.51	3.51	3.40	3.51	3.40
SEER (BTU/WATT-HR.)	10.00	10.00	10.00	10.00	10.30	10.00	10.30

	TXC042C4	TXC043C4	TXC048C4	TXC049C4	TXC050C4	TXC054E5	TXH033A4
<b>EXPANSION TYPE</b>	CHG TO 71	CHG TO 71	CHG TO 71	CHG TO 71	CHG TO 71	TXV-B	CHG TO 71
<b>RATINGS (COOLING) ①</b>							
BTUH (TOTAL)	33400	33600	34200	34200	34200	34200	32000
BTUH (SENSIBLE)	23600	24300	25200	25200	25200	25500	21600
INDOOR AIRFLOW (CFM)	1250	1260	1280	1280	1280	1280	1125
SYSTEM POWER (KW)	3.44	3.48	3.51	3.51	3.51	3.47	3.33
SEER (BTU/WATT-HR.)	10.00	10.00	10.00	10.00	10.00	10.15	10.00

	TXH041A4
<b>EXPANSION TYPE</b>	CHG TO 71
<b>RATINGS (COOLING) ①</b>	
BTUH (TOTAL)	34200
BTUH (SENSIBLE)	24700
INDOOR AIRFLOW (CFM)	1280
SYSTEM POWER (KW)	3.51
SEER (BTU/WATT-HR.)	10.00

### CONDENSING UNIT WITH AIR HANDLERS

	TWE030C14	TWE036C14	TWE042C14-B	TWE048C14-B	TWG030A14	TWG036A14	TWG037A14
<b>EXPANSION TYPE</b>	CHG TO 71	FACT INS 71	CHG TO 71	CHG TO 71	CHG TO 71	FACT INS 71	FACT INS 71
<b>RATINGS (COOLING) ①</b>							
BTUH (TOTAL)	30400	32600	33600	34200	31000	32000	33000
BTUH (SENSIBLE)	19700	22200	23800	24800	20400	21400	22400
INDOOR AIRFLOW (CFM)	950	1200	1260	1280	1100	1150	1200
SYSTEM POWER (KW)	3.20	3.40	3.52	3.58	3.30	3.48	3.47
SEER (BTU/WATT-HR.)	10.00	10.00	10.00	10.00	10.00	10.00	10.00

	TWG042A14	TWV030B14	TWV036B14
<b>EXPANSION TYPE</b>	CHG TO 71	CHG TO 71	FACT INS 71
<b>RATINGS (COOLING) ①</b>			
BTUH (TOTAL)	33400	32400	33400
BTUH (SENSIBLE)	23500	22600	24000
INDOOR AIRFLOW (CFM)	1250	1125	1200
SYSTEM POWER (KW)	3.53	3.41	3.48
SEER (BTU/WATT-HR.)	10.00	10.00	10.05

\*See page 21 for combinations with Auxiliary Devices.



# General Data

## TTB042C100A

OUTDOOR UNIT ①②	TTB042C100A
<b>POWER CONNS.</b> — V/PH/Hz	200/230/01/60
MIN. BRCH. CIR. AMPACITY ③	25
BR. CIR. } MAX.(AMPS)	40
PROT. RTG. } RECMD. (AMPS)	40
<b>NOISE RATING (DECIBELS) ②</b>	78
<b>COMPRESSOR</b>	CLIMATUFF®
NO. USED - NO. SPEEDS	1 - 1
VOLTS/PH/Hz	200/230/1/60
R.L. AMPS - L.R. AMPS	19.0 - 102
BRCH. CIR. SELEC. CUR. AMPS	19.0
<b>OUTDOOR FAN — TYPE</b>	PROPELLER
DIA. (IN.) - NO. USED	18 - 1
TYPE DRIVE - NO. SPEEDS	DIRECT - 1
CFM @ 0.0 IN. W.G. ④	2800
NO. MOTORS - HP	1 - 1/4
MOTOR SPEED R.P.M.	1075
VOLTS/PH/Hz	200/230/1/60
FL. AMPS	1.30
<b>OUTDOOR COIL — TYPE</b>	SPINE FIN™
ROWS - F.P.I.	1 - 24
FACE AREA (SQ. FT.)	14.93
TUBE SIZE (IN.)	3/8
<b>REFRIGERANT</b>	
LBS. — R-22 (O.D. UNIT) ⑤	6-LBS., 7-OZ.
FACTORY SUPPLIED	YES
LINE SIZE - IN. O.D. GAS ⑥	7/8
LINE SIZE - IN. O.D. LIQ. ⑥	3/8
<b>FCCV — RESTRICTOR ORIFICE SIZE</b>	0.077
<b>DIMENSIONS</b>	H X W X D
OUTDOOR UNIT - CRATED (IN.)	33-3/8 X 26-7/8 X 26-7/8
UNCRATED	SEE OUTLINE DWG.
<b>WEIGHT</b>	
SHIPPING (LBS.)	203
NET (LBS.)	193

- ① CERTIFIED IN ACCORDANCE WITH A.R.I. STANDARD 210/240.
- ② RATED IN ACCORDANCE WITH A.R.I. STANDARD 270.



SPLIT SYSTEM

- ③ CALCULATED IN ACCORDANCE WITH NATL. ELECTRIC CODE. SUITABLE FOR USE WITH HACR CIRCUIT BREAKERS OR FUSES.
- ④ STANDARD AIR - DRY COIL - OUTDOOR
- ⑤ THIS VALUE APPROXIMATE. FOR MORE PRECISE VALUE SEE UNIT NAMEPLATE AND SERVICE INSTRUCTION.
- ⑥ MAX. LINEAR LENGTH 80 FT; MAX. LIFT - SUCTION 60 FT; MAX. LIFT - LIQUID 60 FT. MAX. LENGTH OF PRECHARGED TUBING 50 FT. FOR GREATER LENGTH REFER TO REFRIGERANT PIPING MANUAL PUB. NO. 32-3009.



### CONDENSING UNIT WITH COOLING COILS

	CCBB42A4ACC	CCBB48A4ACC	CCBC48A4ACC	CUBB42A4ACC	CUBB48A4ACC	CUBC48A4ACC	TXA035C4
<b>EXPANSION TYPE</b>	FIXED ORIFICE	FIXED ORIFICE	FIXED ORIFICE	FIXED ORIFICE	FIXED ORIFICE	FIXED ORIFICE	CHG TO 77
<b>RATINGS (COOLING) ①</b>							
BTUH (TOTAL)	38000	38500	39500	38000	38500	39500	36400
BTUH (SENSIBLE)	25200	26100	28200	25200	26100	28200	23000
INDOOR AIRFLOW (CFM)	1200	1250	1480	1200	1250	1480	1100
SYSTEM POWER (KW)	4.13	4.18	4.34	4.13	4.18	4.34	4.02
SEER (BTU/WATT-HR.)	10.00	10.00	10.00	10.00	10.00	10.00	10.00

	TXA036C4	TXA037C4	TXA042C4	TXA043C4	TXA048C4	TXA049C4	TXA050C4
<b>EXPANSION TYPE</b>	CHG TO 77	CHG TO 77	CHG TO 77	CHG TO 77	CHG TO 77	CHG TO 77	CHG TO 77
<b>RATINGS (COOLING) ①</b>							
BTUH (TOTAL)	38500	39000	40000	39500	40000	41000	41000
BTUH (SENSIBLE)	25500	26600	26900	27300	27600	29800	29800
INDOOR AIRFLOW (CFM)	1200	1350	1250	1400	1350	1535	1535
SYSTEM POWER (KW)	4.16	4.22	4.37	4.27	4.28	4.43	4.43
SEER (BTU/WATT-HR.)	10.00	10.00	10.00	10.00	10.00	10.00	10.00

	TXA060C5	TXC035C4	TXC035D4	TXC036C4	TXC036D4	TXC036E5	TXC037C4
<b>EXPANSION TYPE</b>	TXV-B	CHG TO 77	CHG TO 77	CHG TO 77	CHG TO 77	TXV-B	CHG TO 77
<b>RATINGS (COOLING) ①</b>							
BTUH (TOTAL)	41000	36400	36400	38500	38500	40000	39000
BTUH (SENSIBLE)	30200	23000	23000	25500	25500	27100	26600
INDOOR AIRFLOW (CFM)	1535	1100	1100	1200	1200	1275	1350
SYSTEM POWER (KW)	4.41	4.02	4.02	4.16	4.16	4.23	4.22
SEER (BTU/WATT-HR.)	10.00	10.00	10.00	10.00	10.00	10.10	10.00

\*See page 21 for combinations with Auxiliary Devices.



# General Data

## TTB042C100A

### CONDENSING UNIT WITH COOLING COILS

	TXC037E5	TXC042C4	TXC043C4	TXC048C4	TXC049C4	TXC050C4	TXC054E5
<b>EXPANSION TYPE</b>	TXV-B	CHG TO 77	CHG TO 77	CHG TO 77	CHG TO 77	CHG TO 77	TXV-B
<b>RATINGS (COOLING) ①</b>							
BTUH (TOTAL)	40500	40000	39500	40000	41000	41000	41000
BTUH (SENSIBLE)	28000	26900	27300	27600	29800	29800	30200
INDOOR AIRFLOW (CFM)	1350	1250	1400	1350	1535	1535	1535
SYSTEM POWER (KW)	4.29	4.37	4.27	4.28	4.43	4.43	4.41
SEER (BTU/WATT-HR.)	10.10	10.00	10.00	10.00	10.00	10.00	10.00

	TXC060C5	TXH033A4	TXH041A4	TXH054A4
<b>EXPANSION TYPE</b>	TXV-B	CHG TO 77	CHG TO 77	CHG TO 77
<b>RATINGS (COOLING) ①</b>				
BTUH (TOTAL)	41000	36800	40500	43000
BTUH (SENSIBLE)	30200	24000	27800	32000
INDOOR AIRFLOW (CFM)	1535	1125	1400	1575
SYSTEM POWER (KW)	4.41	4.04	4.33	4.55
SEER (BTU/WATT-HR.)	10.00	10.00	10.05	10.10

### CONDENSING UNIT WITH AIR HANDLERS

	TWE036C14	TWE042C14-B	TWE048C14-B	TWE060A-B	TWG042A14	TWG048A14
<b>EXPANSION TYPE</b>	CHG TO 77	CHG TO 77	CHG TO 77	TXV-B	CHG TO 77	CHG TO 77
<b>RATINGS (COOLING) ①</b>						
BTUH (TOTAL)	39000	40000	41500	40500	38500	41500
BTUH (SENSIBLE)	26000	27200	29700	29300	26200	29600
INDOOR AIRFLOW (CFM)	1350	1400	1555	1515	1400	1550
SYSTEM POWER (KW)	4.33	4.37	4.54	4.22	4.28	4.49
SEER (BTU/WATT-HR.)	10.00	10.00	10.00	10.25	10.00	10.20

\*See page 21 for combinations with Auxiliary Devices.



# General Data

## TTB048C100A

<b>OUTDOOR UNIT</b> ①②	<b>TTB048C100A</b>
<b>POWER CONNS.</b> — V/PH/Hz	200/230/01/60
MIN. BRCH. CIR. AMPACITY ③	30
BR. CIR. } MAX.(AMPS)	50
PROT. RTG. } RECMD. (AMPS)	50
<b>NOISE RATING (DECIBELS)</b> ②	80
<b>COMPRESSOR</b>	CLIMATUFF®
NO. USED - NO. SPEEDS	1 - 1
VOLTS/PH/Hz	200/230/1/60
R.L. AMPS - L.R. AMPS	22.5 - 119
BRCH. CIR. SELEC. CUR. AMPS	22.5
<b>OUTDOOR FAN</b> — TYPE	PROPELLER
DIA. (IN.) - NO. USED	18 - 1
TYPE DRIVE - NO. SPEEDS	DIRECT - 1
CFM @ 0.0 IN. W.G. ④	2800
NO. MOTORS - HP	1 - 1/4
MOTOR SPEED R.P.M.	1075
VOLTS/PH/Hz	200/230/1/60
FL. AMPS	1.30
<b>OUTDOOR COIL</b> — TYPE	SPINE FIN™
ROWS - F.P.I.	1 - 24
FACE AREA (SQ. FT.)	14.93
TUBE SIZE (IN.)	3/8
<b>REFRIGERANT</b>	
LBS. — R-22 (O.D. UNIT) ⑤	6-LBS., 8-OZ.
FACTORY SUPPLIED	YES
LINE SIZE - IN. O.D. GAS ⑥	1 1/8
LINE SIZE - IN. O.D. LIQ. ⑥	3/8
<b>FCCV</b> — RESTRICTOR ORIFICE SIZE	0.083
<b>DIMENSIONS</b>	H X W X D
OUTDOOR UNIT - CRATED (IN.)	33-3/8 X 26-7/8 X 26-7/8
UNCRATED	SEE OUTLINE DWG.
<b>WEIGHT</b>	
SHIPPING (LBS.)	212
NET (LBS.)	202

① CERTIFIED IN ACCORDANCE WITH A.R.I. STANDARD 210/240.

② RATED IN ACCORDANCE WITH A.R.I. STANDARD 270.



SPLIT SYSTEM

③ CALCULATED IN ACCORDANCE WITH NATL. ELECTRIC CODE. SUITABLE FOR USE WITH HACR CIRCUIT BREAKERS OR FUSES.

④ STANDARD AIR - DRY COIL - OUTDOOR

⑤ THIS VALUE APPROXIMATE. FOR MORE PRECISE VALUE SEE UNIT NAMEPLATE AND SERVICE INSTRUCTION.

⑥ MAX. LINEAR LENGTH 80 FT; MAX. LIFT - SUCTION 60 FT; MAX. LIFT - LIQUID 60 FT. MAX. LENGTH OF PRECHARGED TUBING 50 FT. FOR GREATER LENGTH REFER TO REFRIGERANT PIPING MANUAL PUB. NO. 32-3009.



### CONDENSING UNIT WITH COOLING COILS

	CCBB48A4ACC	CCBC48A4ACC	CCBD60A5ACC	CUBB48A4ACC	CUBC48A4ACC	CUBD60A5ACC	TXA042C4
<b>EXPANSION TYPE</b>	FIXED ORIFICE	FIXED ORIFICE	TXV-B	FIXED ORIFICE	FIXED ORIFICE	TXV-B	CHG TO 83
<b>RATINGS (COOLING)</b> ①							
BTUH (TOTAL)	42500	44500	46000	42500	44500	46000	42500
BTUH (SENSIBLE)	27700	30800	33300	27700	30800	33300	27700
INDOOR AIRFLOW (CFM)	1250	1600	1725	1250	1600	1725	1250
SYSTEM POWER (KW)	4.67	4.92	5.03	4.67	4.92	5.03	4.67
SEER (BTU/WATT-HR.)	10.00	10.00	10.00	10.00	10.00	10.00	10.00

	TXA043C4	TXA048C4	TXA049C4	TXA050C4	TXA060C5	TXC042C4	TXC043C4
<b>EXPANSION TYPE</b>	CHG TO 83	FACT INS 83	FACT INS 83	FACT INS 83	TXV-B	CHG TO 83	CHG TO 83
<b>RATINGS (COOLING)</b> ①							
BTUH (TOTAL)	44500	44000	46500	46500	45500	42500	44500
BTUH (SENSIBLE)	30600	29300	32500	32500	32700	27700	30600
INDOOR AIRFLOW (CFM)	1575	1350	1600	1600	1700	1250	1575
SYSTEM POWER (KW)	4.92	4.81	5.20	5.20	4.97	4.67	4.92
SEER (BTU/WATT-HR.)	10.00	10.00	10.00	10.00	10.00	10.00	10.00

	TXC048C4	TXC049C4	TXC050C4	TXC054E5	TXC060C5	TXH041A4	TXH054A4
<b>EXPANSION TYPE</b>	FACT INS 83	FACT INS 83	FACT INS 83	TXV-B	TXV-B	CHG TO 83	FACT INS 83
<b>RATINGS (COOLING)</b> ①							
BTUH (TOTAL)	44000	46500	46500	45500	45500	45000	47000
BTUH (SENSIBLE)	29300	32500	32500	32700	32700	30700	33600
INDOOR AIRFLOW (CFM)	1350	1600	1600	1700	1700	1575	1600
SYSTEM POWER (KW)	4.81	5.20	5.20	5.00	4.97	4.92	5.03
SEER (BTU/WATT-HR.)	10.00	10.00	10.00	10.00	10.00	10.00	10.15

\*See pages 21 and 22 for combinations with Auxiliary Devices.



# General Data

# TTB048C100A

---

## CONDENSING UNIT WITH AIR HANDLERS

---

	TWE048C14-B	TWE060A-B	TWG048A14
<b>EXPANSION TYPE</b>	FACT INS 83	TXV-B	FACT INS 83
<b>RATINGS (COOLING) ①</b>			
BTUH (TOTAL)	45500	45500	45000
BTUH (SENSIBLE)	31300	32600	30800
INDOOR AIRFLOW (CFM)	1600	1705	1600
SYSTEM POWER (KW)	5.03	4.87	5.00
SEER (BTU/WATT-HR.)	10.00	10.15	10.00

\*See pages 21 and 22 for combinations with Auxiliary Devices.



# General Data

## TTB060C100B

<b>OUTDOOR UNIT</b> ①②	<b>TTB060C100B</b>
<b>POWER CONNS.</b> — V/PH/Hz	208/230/01/60
MIN. BRCH. CIR. AMPACITY ③	38
BR. CIR. } MAX.(AMPS)	60/50
PROT. RTG. } RECMD. (AMPS)	60/50
<b>NOISE RATING (DECIBELS)</b> ②	80
<b>COMPRESSOR</b>	TRANE
NO. USED - NO. SPEEDS	1 - 1
VOLTS/PH/Hz	200/230/1/60
R.L. AMPS - L.R. AMPS	29.1 - 141
BRCH. CIR. SELEC. CUR. AMPS	29.1
<b>OUTDOOR FAN</b> — TYPE	PROPELLER
DIA. (IN.) - NO. USED	22 - 1
TYPE DRIVE - NO. SPEEDS	DIRECT - 1
CFM @ 0.0 IN. W.G. ④	3031
NO. MOTORS - HP	1 - 1/4
MOTOR SPEED R.P.M.	825
VOLTS/PH/Hz	200/230/1/60
FL. AMPS	1.90
<b>OUTDOOR COIL</b> — TYPE	SPINE FIN™
ROWS - F.P.I.	1 - 24
FACE AREA (SQ. FT.)	25.50
TUBE SIZE (IN.)	3/8
<b>REFRIGERANT</b>	
LBS. — R-22 (O.D. UNIT) ⑤	9-LBS., 0 OZ.
FACTORY SUPPLIED	YES
LINE SIZE - IN. O.D. GAS ⑥	1 1/8
LINE SIZE - IN. O.D. LIQ. ⑥	3/8
<b>FCCV</b> — RESTRICTOR ORIFICE SIZE	0.092
<b>DIMENSIONS</b>	H X W X D
OUTDOOR UNIT - CRATED (IN.)	41-1/4 X 34-3/4 X 30-1/2
UNCRATED	SEE OUTLINE DWG.
<b>WEIGHT</b>	
SHIPPING (LBS.)	240
NET (LBS.)	224

- ① CERTIFIED IN ACCORDANCE WITH A.R.I. STANDARD 210/240.
- ② RATED IN ACCORDANCE WITH A.R.I. STANDARD 270.



SPLIT SYSTEM

- ③ CALCULATED IN ACCORDANCE WITH NATL. ELECTRIC CODE. SUITABLE FOR USE WITH HACR CIRCUIT BREAKERS OR FUSES.
- ④ STANDARD AIR - DRY COIL - OUTDOOR
- ⑤ THIS VALUE APPROXIMATE. FOR MORE PRECISE VALUE SEE UNIT NAMEPLATE AND SERVICE INSTRUCTION.
- ⑥ MAX. LINEAR LENGTH 80 FT; MAX. LIFT - SUCTION 60 FT; MAX. LIFT - LIQUID 60 FT. MAX. LENGTH OF PRECHARGED TUBING 50 FT. FOR GREATER LENGTH REFER TO REFRIGERANT PIPING MANUAL PUB. NO. 32-3009.



### CONDENSING UNIT WITH COOLING COILS

	CCBC60A4ACC	CCBD60A5ACC	CUBC60A4ACC	CUBD60A5ACC	TXA048C4	TXA049C4	TXA050C4
<b>EXPANSION TYPE</b>	FACT INS 92	TXV-B	FIXED ORIFICE	TXV-B	CHG TO 92	CHG TO 92	CHG TO 92
<b>RATINGS (COOLING)</b> ①							
BTUH (TOTAL)	56000	57500	56000	57500	54000	56000	56000
BTUH (SENSIBLE)	36500	39400	36500	39400	34200	36500	36500
INDOOR AIRFLOW (CFM)	1675	2000	1675	2000	1350	1675	1675
SYSTEM POWER (KW)	6.02	6.15	6.02	6.15	5.81	6.02	6.02
SEER (BTU/WATT-HR.)	10.05	10.00	10.05	10.00	10.00	10.05	10.05

	TXA060C5	TXA061C5	TXC048C4	TXC049C4	TXC050C4	TXC054E5	TXC060C5
<b>EXPANSION TYPE</b>	TXV-B	TXV-B	CHG TO 92	CHG TO 92	CHG TO 92	TXV-B	TXV-B
<b>RATINGS (COOLING)</b> ①							
BTUH (TOTAL)	56500	58000	54000	56000	56000	56000	56500
BTUH (SENSIBLE)	37200	39800	34200	36500	36500	36900	37200
INDOOR AIRFLOW (CFM)	1700	2000	1350	1675	1675	1700	1700
SYSTEM POWER (KW)	6.01	6.55	5.81	6.02	6.02	5.99	6.01
SEER (BTU/WATT-HR.)	10.15	10.00	10.00	10.05	10.05	10.10	10.15

### CONDENSING UNIT WITH COOLING COILS

### CONDENSING UNIT WITH AIR HANDLERS

	TXC061C5	TXH054A4	TWE048C14-B	TWE060A
<b>EXPANSION TYPE</b>	TXV-B	CHG TO 92	CHG TO 92	TXV-B
<b>RATINGS (COOLING)</b> ①				
BTUH (TOTAL)	57500	59500	56500	57000
BTUH (SENSIBLE)	38800	39500	37000	38600
INDOOR AIRFLOW (CFM)	1900	1700	1800	2000
SYSTEM POWER (KW)	6.15	6.20	6.21	6.10
SEER (BTU/WATT-HR.)	10.00	10.30	10.05	10.15

\*See page 22 for combinations with Auxiliary Devices.



# Ratings with Auxiliary Devices

## COMBINATIONS WITH FAN DELAY RELAY KIT AND/OR TXV KIT

\*When models are matched with an indoor air handler or coil that has a flow control check valve or expansion valve flow control, the addition of an indoor fan delay relay and/or TXV kit may increase the system SEER. See charts below for ratings.

OUTDOOR MODEL	INDOOR MODEL	FAN DELAY KIT	TXV KIT	CFM	SEER	COOLING CAPACITY
TTB012C100A	CCBA18A4ACC	Y	N	450	10.15	15800
TTB012C100A	CUBA18A4ACC	Y	N	450	10.15	15800
TTB012C100A	TXA018C4	Y	N	535	10.25	14800
TTB012C100A	TXA024C4	Y	N	450	10.25	14400
TTB012C100A	TXA025C4	Y	N	450	10.35	14700
TTB012C100A	TXC018C4	Y	N	535	10.25	14800
TTB012C100A	TXC024C4	Y	N	450	10.25	14400
TTB012C100A	TXC024D4	Y	N	450	10.25	14400
TTB012C100A	TXC025C4	Y	N	450	10.35	14700
TTB012C100A	TXC025D4	Y	N	450	10.35	14700
TTB012C100A	TXH025A4	Y	N	450	10.30	16200
TTB018C100A	CCBA18A4ACC	Y	N	600	10.20	16600
TTB018C100A	CCBA24A4ACC	Y	N	620	10.40	16600
TTB018C100A	CUBA18A4ACC	Y	N	600	10.20	16600
TTB018C100A	CUBA24A4ACC	Y	N	620	10.40	16600
TTB018C100A	TXA018C4	Y	N	600	10.30	17000
TTB018C100A	TXA024C4	Y	N	630	10.30	16800
TTB018C100A	TXA025C4	Y	N	640	10.35	17100
TTB018C100A	TXC018C4	Y	N	600	10.30	17000
TTB018C100A	TXC024C4	Y	N	630	10.30	16800
TTB018C100A	TXC024D4	Y	N	630	10.30	16800
TTB018C100A	TXC025C4	Y	N	640	10.35	17100
TTB018C100A	TXC025D4	Y	N	640	10.35	17100
TTB018C100A	TXH025A4	Y	N	640	10.30	17200
TTB024C100A	CCBA24A4ACC	Y	N	800	10.10	22000
TTB024C100A	CCBA30A4ACC	Y	N	775	10.10	21200
TTB024C100A	CCBB30A4ACC	Y	N	800	10.20	22000
TTB024C100A	CUBA24A4ACC	Y	N	800	10.10	22000
TTB024C100A	CUBA30A4ACC	Y	N	775	10.10	21200
TTB024C100A	CUBB30A4ACC	Y	N	800	10.20	22000
TTB024C100A	TXA018C4	Y	N	675	10.05	20400
TTB024C100A	TXA024C4	Y	N	800	10.10	22200
TTB024C100A	TXA025C4	Y	N	800	10.25	21800
TTB024C100A	TXA030C4	Y	N	825	10.30	22200
TTB024C100A	TXA031C4	Y	N	835	10.30	22400
TTB024C100A	TXA035C4	Y	N	825	10.30	22000
TTB024C100A	TXA036C4	Y	N	850	10.40	22800
TTB024C100A	TXA037C4	Y	N	850	10.40	22800
TTB024C100A	TXC018C4	Y	N	675	10.05	20400
TTB024C100A	TXC024C4	Y	N	800	10.10	22200
TTB024C100A	TXC024D4	Y	N	800	10.10	22200
TTB024C100A	TXC025C4	Y	N	800	10.25	21800
TTB024C100A	TXC025D4	Y	N	800	10.25	21800
TTB024C100A	TXC030C4	Y	N	825	10.30	22200
TTB024C100A	TXC030D4	Y	N	825	10.30	22200

OUTDOOR MODEL	INDOOR MODEL	FAN DELAY KIT	TXV KIT	CFM	SEER	COOLING CAPACITY
TTB024C100A	TXC031C4	Y	N	835	10.30	22400
TTB024C100A	TXC031D4	Y	N	835	10.30	22400
TTB024C100A	TXC035C4	Y	N	825	10.30	22000
TTB024C100A	TXC035D4	Y	N	825	10.30	22000
TTB024C100A	TXC036C4	Y	N	850	10.40	22800
TTB024C100A	TXC036D4	Y	N	850	10.40	22800
TTB024C100A	TXC037C4	Y	N	850	10.40	22800
TTB024C100A	TXH025A4	Y	N	800	10.20	21400
TTB024C100A	TXH033A4	Y	N	840	10.40	22400
TTB030C100A	CCBA30A4ACC	Y	N	950	10.15	26600
TTB030C100A	CCBA36A4ACC	Y	N	1025	10.25	27400
TTB030C100A	CCBB30A4ACC	Y	N	1000	10.35	27800
TTB030C100A	CCBB36A4ACC	Y	N	1035	10.30	27600
TTB030C100A	CUBA30A4ACC	Y	N	950	10.15	26600
TTB030C100A	CUBA36A4ACC	Y	N	1025	10.25	27400
TTB030C100A	CUBB30A4ACC	Y	N	1000	10.35	27800
TTB030C100A	CUBB36A4ACC	Y	N	1035	10.30	27600
TTB030C100A	*TWE024P13	N	N	900	10.50	28000
TTB030C100A	TXA024C4	Y	N	900	10.15	26600
TTB030C100A	TXA025C4	Y	N	900	10.25	27000
TTB030C100A	TXA030C4	Y	N	1000	10.30	27800
TTB030C100A	TXA031C4	Y	N	1000	10.10	28200
TTB030C100A	TXA035C4	Y	N	1055	10.25	28200
TTB030C100A	TXA036C4	Y	N	1085	10.35	29000
TTB030C100A	TXA037C4	Y	N	1085	10.35	29000
TTB030C100A	TXA042C4	Y	N	1095	10.40	29200
TTB030C100A	TXA043C4	Y	N	1095	10.40	29200
TTB030C100A	TXC024C4	Y	N	900	10.15	26600
TTB030C100A	TXC024D4	Y	N	900	10.15	26600
TTB030C100A	TXC025C4	Y	N	900	10.25	27000
TTB030C100A	TXC025D4	Y	N	900	10.25	27000
TTB030C100A	TXC030C4	Y	N	1000	10.30	27800
TTB030C100A	TXC030D4	Y	N	1000	10.30	27800
TTB030C100A	TXC031C4	Y	N	1000	10.10	28200
TTB030C100A	TXC031D4	Y	N	1000	10.10	28200
TTB030C100A	TXC031E5	Y	N	1000	10.65	28600
TTB030C100A	TXC035C4	Y	N	1055	10.25	28200
TTB030C100A	TXC035D4	Y	N	1055	10.25	28200
TTB030C100A	TXC036C4	Y	N	1085	10.35	29000
TTB030C100A	TXC036D4	Y	N	1085	10.35	29000
TTB030C100A	TXC036E5	Y	N	1110	10.70	29600
TTB030C100A	TXC037C4	Y	N	1085	10.35	29000
TTB030C100A	TXC037E5	Y	N	1110	10.70	29600
TTB030C100A	TXC042C4	Y	N	1095	10.40	29200
TTB030C100A	TXC043C4	Y	N	1095	10.40	29200

\* START KIT REQUIRED



# Ratings with Auxiliary Devices

## COMBINATIONS WITH FAN DELAY RELAY KIT AND/OR TXV KIT

\*When models are matched with an indoor air handler or coil that has a flow control check valve or expansion valve flow control, the addition of an indoor fan delay relay and/or TXV kit may increase the system SEER. See charts below for ratings.

OUTDOOR MODEL	INDOOR MODEL	FAN DELAY KIT	TXV KIT	CFM	SEER	COOLING CAPACITY
TTB030C100A	TXH025A4	Y	N	900	10.20	26800
TTB030C100A	TXH033A4	Y	N	1000	10.40	28200
<b>TTB036C100A</b>	CCBA36A4ACC	Y	N	1100	10.10	31600
TTB036C100A	CCBB36A4ACC	Y	N	1100	10.15	31800
TTB036C100A	CCBB42A4ACC	Y	N	1200	10.20	32000
TTB036C100A	CUBA36A4ACC	Y	N	1100	10.10	31600
TTB036C100A	CUBB36A4ACC	Y	N	1100	10.15	31800
TTB036C100A	CUBB42A4ACC	Y	N	1200	10.20	32000
TTB036C100A	*TWE048P13	N	N	1350	10.50	36000
TTB036C100A	TXA030C4	Y	N	1100	10.10	31600
TTB036C100A	TXA031C4	Y	N	1100	10.15	31800
TTB036C100A	TXA035C4	Y	N	1100	10.10	31600
TTB036C100A	TXA036C4	Y	N	1200	10.15	34000
TTB036C100A	TXA037C4	Y	N	1200	10.15	34000
TTB036C100A	TXA042C4	Y	N	1250	10.25	33400
TTB036C100A	TXA043C4	Y	N	1260	10.20	33600
TTB036C100A	TXA048C4	Y	N	1280	10.25	34200
TTB036C100A	TXA049C4	Y	N	1280	10.30	34200
TTB036C100A	TXA050C4	Y	N	1280	10.30	34200
TTB036C100A	TXC030C4	Y	N	1100	10.10	31600
TTB036C100A	TXC030D4	Y	N	1100	10.10	31600
TTB036C100A	TXC031C4	Y	N	1100	10.15	31800
TTB036C100A	TXC031D4	Y	N	1100	10.15	31800
TTB036C100A	TXC031E5	Y	N	1100	10.40	33000
TTB036C100A	TXC035C4	Y	N	1100	10.10	31600
TTB036C100A	TXC035D4	Y	N	1100	10.10	31600
TTB036C100A	TXC036C4	Y	N	1200	10.15	34000
TTB036C100A	TXC036D4	Y	N	1200	10.15	34000
TTB036C100A	TXC036E5	Y	N	1200	10.40	33800
TTB036C100A	TXC037C4	Y	N	1200	10.15	34000
TTB036C100A	TXC037E5	Y	N	1200	10.40	33800
TTB036C100A	TXC042C4	Y	N	1250	10.25	33400
TTB036C100A	TXC043C4	Y	N	1260	10.20	33600
TTB036C100A	TXC048C4	Y	N	1280	10.25	34200
TTB036C100A	TXC049C4	Y	N	1280	10.30	34200
TTB036C100A	TXC050C4	Y	N	1280	10.30	34200
TTB036C100A	TXC054E5	Y	N	1280	10.40	34200
TTB036C100A	TXH033A4	Y	N	1125	10.15	32000
TTB036C100A	TXH041A4	Y	N	1280	10.30	34200
<b>TTB042C100A</b>	CCBB42A4ACC	Y	N	1200	10.15	38000
TTB042C100A	CCBB48A4ACC	Y	N	1250	10.15	38500
TTB042C100A	CCBC48A4ACC	Y	N	1480	10.05	39500
TTB042C100A	CUBB42A4ACC	Y	N	1200	10.15	38000
TTB042C100A	CUBB48A4ACC	Y	N	1250	10.15	38500
TTB042C100A	CUBC48A4ACC	Y	N	1480	10.05	39500

OUTDOOR MODEL	INDOOR MODEL	FAN DELAY KIT	TXV KIT	CFM	SEER	COOLING CAPACITY
TTB042C100A	*TWE048P13	N	N	1575	10.25	42000
TTB042C100A	TXA035C4	Y	N	1100	10.00	36400
TTB042C100A	TXA036C4	Y	N	1200	10.15	38500
TTB042C100A	TXA037C4	Y	N	1350	10.15	39000
TTB042C100A	TXA042C4	Y	N	1250	10.25	40000
TTB042C100A	TXA043C4	Y	N	1400	10.20	39500
TTB042C100A	TXA048C4	Y	N	1350	10.25	40000
TTB042C100A	TXA049C4	Y	N	1535	10.15	41000
TTB042C100A	TXA050C4	Y	N	1535	10.15	41000
TTB042C100A	TXA060C5	Y	N	1535	10.25	41000
TTB042C100A	TXC035C4	Y	N	1100	10.00	36400
TTB042C100A	TXC035D4	Y	N	1100	10.00	36400
TTB042C100A	TXC036C4	Y	N	1200	10.15	38500
TTB042C100A	TXC036D4	Y	N	1200	10.15	38500
TTB042C100A	TXC036E5	Y	N	1275	10.40	40000
TTB042C100A	TXC037C4	Y	N	1350	10.15	39000
TTB042C100A	TXC037E5	Y	N	1350	10.40	40500
TTB042C100A	TXC042C4	Y	N	1250	10.25	40000
TTB042C100A	TXC043C4	Y	N	1400	10.20	39500
TTB042C100A	TXC048C4	Y	N	1350	10.25	40000
TTB042C100A	TXC049C4	Y	N	1535	10.15	41000
TTB042C100A	TXC050C4	Y	N	1535	10.15	41000
TTB042C100A	TXC054E5	Y	N	1535	10.25	41000
TTB042C100A	TXC060C5	Y	N	1535	10.25	41000
TTB042C100A	TXH033A4	Y	N	1125	10.05	36800
TTB042C100A	TXH041A4	Y	N	1400	10.30	40500
TTB042C100A	TXH054A4	Y	N	1575	10.40	43000
<b>TTB048C100A</b>	CCBB48A4ACC	Y	N	1250	10.15	42500
TTB048C100A	CCBC48A4ACC	Y	N	1600	10.10	44500
TTB048C100A	CCBC60A4ACC	Y	N	1650	10.00	44000
TTB048C100A	CCBD60A5ACC	-	N	1725	10.15	46000
TTB048C100A	CUBB48A4ACC	Y	N	1250	10.15	42500
TTB048C100A	CUBC48A4ACC	Y	N	1600	10.10	44500
TTB048C100A	CUBC60A4ACC	Y	N	1650	10.00	44000
TTB048C100A	CUBD60A5ACC	Y	N	1725	10.15	46000
TTB048C100A	*TWE060P13	N	N	1760	10.00	47000
TTB048C100A	TXA042C4	Y	N	1250	10.15	42500
TTB048C100A	TXA043C4	Y	N	1575	10.10	44500
TTB048C100A	TXA048C4	Y	N	1350	10.25	44000
TTB048C100A	TXA049C4	Y	N	1600	10.20	46500
TTB048C100A	TXA050C4	Y	N	1600	10.20	46500
TTB048C100A	TXA060C5	Y	N	1700	10.20	45500
TTB048C100A	TXC042C4	Y	N	1250	10.15	42500
TTB048C100A	TXC043C4	Y	N	1575	10.10	44500
TTB048C100A	TXC048C4	Y	N	1350	10.25	44000

\* START KIT REQUIRED



# Ratings with Auxiliary Devices

## COMBINATIONS WITH FAN DELAY RELAY KIT AND/OR TXV KIT

\*When models are matched with an indoor air handler or coil that has a flow control check valve or expansion valve flow control, the addition of an indoor fan delay relay and/or TXV kit may increase the system SEER. See charts below for ratings.

OUTDOOR MODEL	INDOOR MODEL	FAN DELAY KIT	TXV KIT	CFM	SEER	COOLING CAPACITY
TTB048C100A	TXC049C4	Y	N	1600	10.20	46500
TTB048C100A	TXC050C4	Y	N	1600	10.20	46500
TTB048C100A	TXC054E5	Y	N	1700	10.15	45500
TTB048C100A	TXC060C5	Y	N	1700	10.20	45500
TTB048C100A	TXH041A4	Y	N	1575	10.25	45000
TTB048C100A	TXH054A4	Y	N	1600	10.50	47000
<b>TTB060C100B</b>	CCBC60A4ACC	Y	N	1675	10.35	56000
TTB060C100B	CCBD60A5ACC	-	N	2000	10.15	57500
TTB060C100B	CUBC60A4ACC	Y	N	1675	10.35	56000
TTB060C100B	CUBD60A5ACC	Y	N	1900	10.15	57500
TTB060C100B	TXA048C4	Y	N	1350	10.30	54000

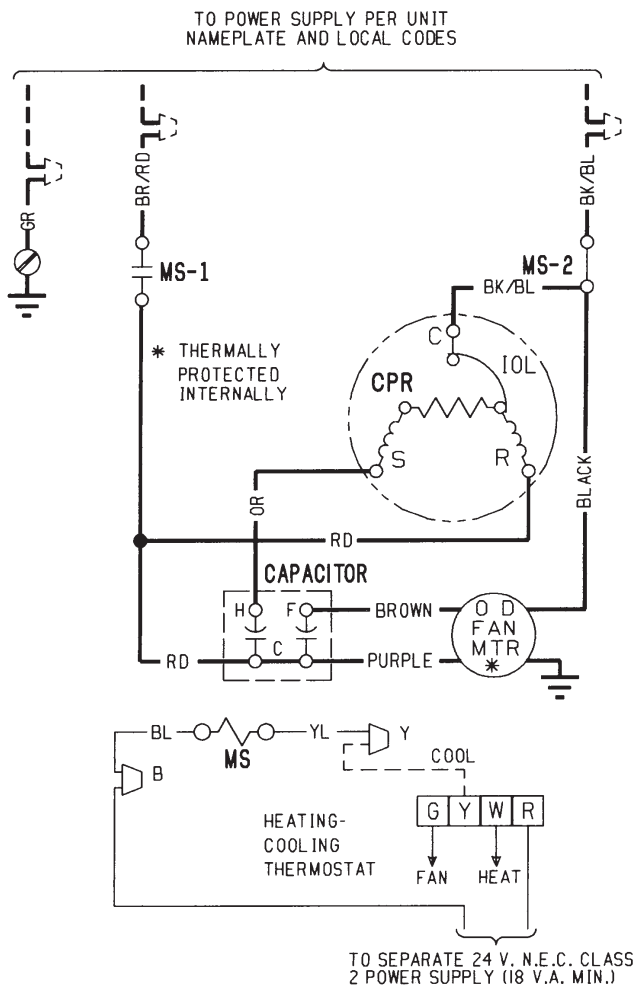
OUTDOOR MODEL	INDOOR MODEL	FAN DELAY KIT	TXV KIT	CFM	SEER	COOLING CAPACITY
TTB060C100B	TXA049C4	Y	N	1675	10.35	56000
TTB060C100B	TXA050C4	Y	N	1675	10.35	56000
TTB060C100B	TXA060C5	Y	N	1700	10.40	56500
TTB060C100B	TXA061C5	Y	N	2000	10.10	58000
TTB060C100B	TXC048C4	Y	N	1350	10.30	54000
TTB060C100B	TXC049C4	Y	N	1675	10.35	56000
TTB060C100B	TXC050C4	Y	N	1675	10.35	56000
TTB060C100B	TXC054E5	Y	N	1700	10.40	56000
TTB060C100B	TXC060C5	Y	N	1700	10.40	56500
TTB060C100B	TXC061C5	Y	N	1900	10.15	57500
TTB060C100B	TXH054A4	Y	N	1700	10.40	59500

\* START KIT REQUIRED

# Electrical Data

## SCHEMATIC DIAGRAMS (SEE LEGEND)

### TTB012-024C100A



- NOTES:
1. LOW VOLTAGE (24 V.) FIELD WIRING MUST BE 18 AWG MIN.
  2. USE COPPER CONDUCTORS. IF ALUM. OR COPPER-CLAD ALUM. POWER WIRING IS USED, CONNECTORS WHICH MEET ALL APPLICABLE CODES AND ARE ACCEPTABLE TO THE INSPECTION AUTHORITY HAVING JURISDICTION SHALL BE USED.

#### FOR CANADIAN INSTALLATIONS POUR INSTALLATIONS CANADIENNES

CAUTION: NOT SUITABLE FOR USE ON SYSTEMS EXCEEDING 150V-TO-GROUND.  
ATTENTION: NE CONVIENT PAS AUX INSTALLATIONS DE PLUS DE 150 V A LA TERRE.

## LEGEND

— COLOR OF WIRE  
BK/BL BLACK WIRE WITH BLUE MARKER  
— COLOR OF MARKER

BK	BLACK	OR	ORANGE	YL	YELLOW
BL	BLUE	RD	RED	GR	GREEN
BR	BROWN	WH	WHITE	PR	PURPLE

## SYMBOLS

- |       |                                |                  |
|-------|--------------------------------|------------------|
| —     | 24 V.                          | } FACTORY WIRING |
| —     | LINE V.                        |                  |
| - - - | 24 V.                          | } FIELD WIRING   |
| - - - | LINE V.                        |                  |
| - X - | FIELD INSTALLED FACTORY WIRING |                  |
| ⊥     | GROUND                         |                  |
| •     | JUNCTION                       |                  |
| △     | WIRE NUT OR CONNECTOR          |                  |
| ⌚     | COIL                           |                  |
| ⌚     | CAPACITOR                      |                  |
| ⌚     | RELAY CONTACT (N.O.)           |                  |
| ⌚     | RELAY CONTACT (N.C.)           |                  |
| ⌚     | INTERNAL OVERLOAD PROTECTOR    |                  |
| ⌚     | RESISTOR OR HEATING ELEMENT    |                  |
| ⌚     | MOTOR WINDING                  |                  |
| ○     | TERMINAL                       |                  |
| □     | TERMINAL BOARD                 |                  |
| ⌚     | RESISTOR-NONLINEAR             |                  |
| ⌚     | FUSE                           |                  |

CN	WIRE CONNECTOR
CPR	COMPRESSOR
CS	STARTING CAPACITOR
CSR	CAPACITOR SWITCHING RELAY
IOL	INTERNAL OVERLOAD PROTECTOR
MS	COMPRESSOR MOTOR CONTACTOR
ODT	OUTDOOR THERMOSTAT
PTCR	POSITIVE TEMPERATURE COEFFICIENT RESISTOR

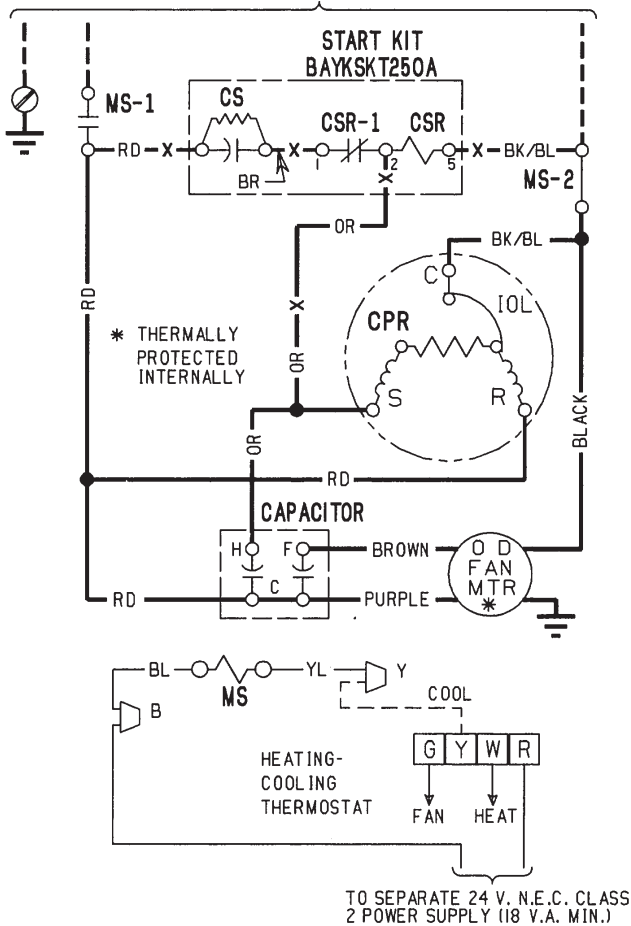


# Electrical Data

## SCHEMATIC DIAGRAMS (SEE LEGEND)

### TTB030-048C100A

TO POWER SUPPLY PER UNIT  
NAMEPLATE AND LOCAL CODES



#### NOTES:

1. LOW VOLTAGE (24 V) FIELD WIRING MUST BE 18 AWG MIN.

<p><b>⚠ WARNING</b> HAZARDOUS VOLTAGE! DISCONNECT ALL ELECTRIC POWER INCLUDING REMOTE DISCONNECTS BEFORE SERVICING. FAILURE TO DISCONNECT POWER BEFORE SERVICING CAN CAUSE SEVERE PERSONAL INJURY OR DEATH!</p>	<p><b>⚠ CAUTION</b> USE COPPER CONDUCTORS ONLY! UNIT TERMINALS ARE NOT DESIGNED TO ACCEPT OTHER TYPES OF CONDUCTORS. FAILURE TO DO SO MAY CAUSE DAMAGE TO THE EQUIPMENT!</p>
---	--

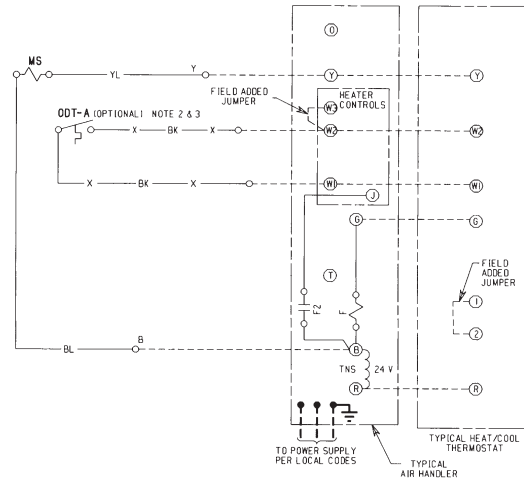
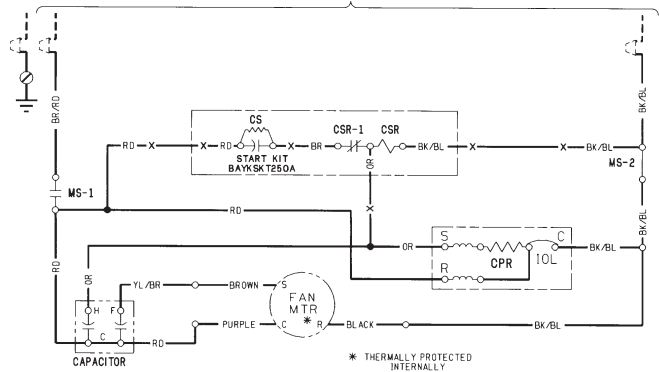
#### FOR CANADIAN INSTALLATIONS POUR INSTALLATIONS CANADIENNES

CAUTION: NOT SUITABLE FOR USE ON SYSTEMS EXCEEDING 150V-TO-GROUND.  
ATTENTION: NE CONVIENT PAS AUX INSTALLATIONS DE PLUS DE 150 V A LA TERRE.

From Dwg. 21C150768 P03

### TTB060C100B

TO POWER SUPPLY PER UNIT NAMEPLATE AND LOCAL CODES



#### NOTES:

1. LOW VOLTAGE (24 V) FIELD WIRING MUST BE 18 A.W.G. MIN.
2. IF ODT-A IS NOT USED MAKE NO CONNECTIONS TO BK LEADS AT ODT UNIT AND ADD JUMPER BETWEEN W1 & W2 AT AIR HANDLER.
3. PROVISIONS FOR OPTIONAL "ODT'S" WILL VARY DEPENDING ON UNIT SIZE.

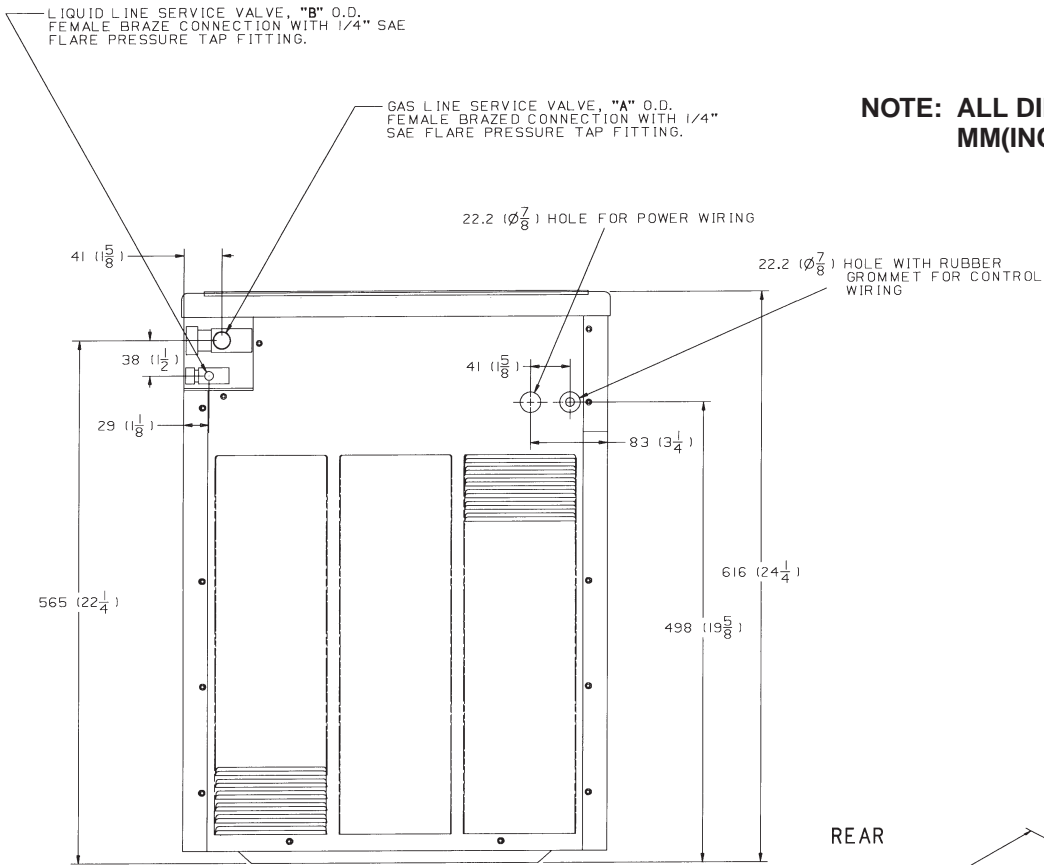
<p><b>⚠ WARNING</b> HAZARDOUS VOLTAGE! DISCONNECT ALL ELECTRIC POWER INCLUDING REMOTE DISCONNECTS BEFORE SERVICING. FAILURE TO DISCONNECT POWER BEFORE SERVICING CAN CAUSE SEVERE PERSONAL INJURY OR DEATH!</p>	<p><b>⚠ CAUTION</b> USE COPPER CONDUCTORS ONLY! UNIT TERMINALS ARE NOT DESIGNED TO ACCEPT OTHER TYPES OF CONDUCTORS. FAILURE TO DO SO MAY CAUSE DAMAGE TO THE EQUIPMENT!</p>
---	--

From Dwg. 21D149896 P02



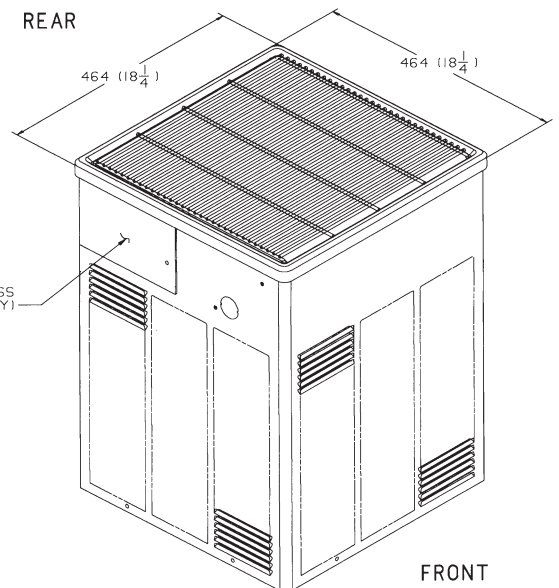
# Dimensions

## TTB012-024C



**NOTE: ALL DIMENSIONS ARE IN MM(INCHES).**

REAR VIEW

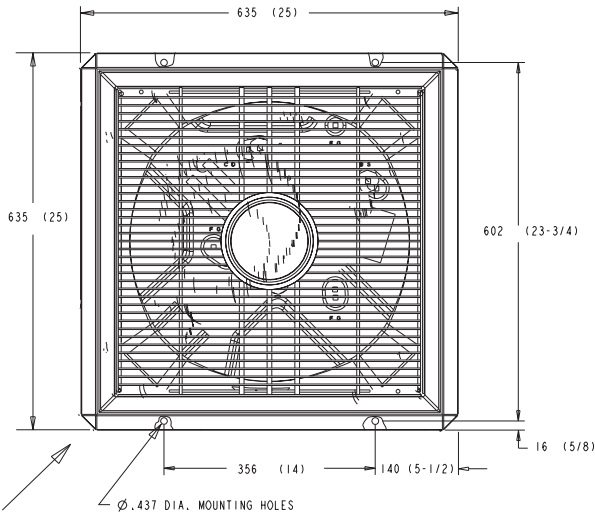


MODEL	A	B
TTB012C-A	5/8	1/4
TTB018C-A	5/8	1/4
TTB024C-A	3/4	5/16

NOTE: TABLE IN INCHES ONLY.

# Dimensions

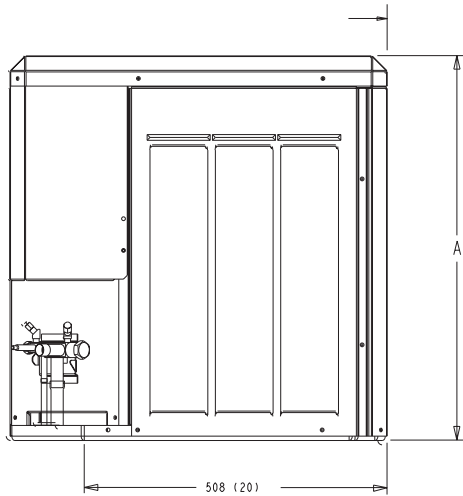
## TTB030-048C



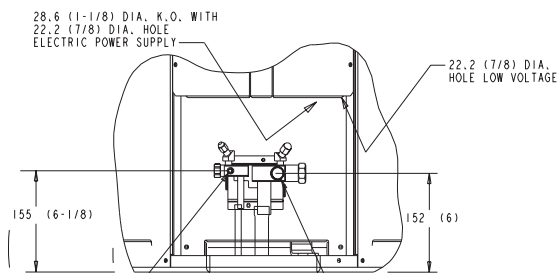
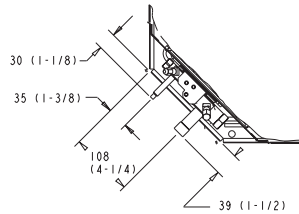
**NOTE: ALL DIMENSIONS ARE IN MM(INCHES).**

**DETAIL X**

SERVICE PANEL  
ELECTRICAL AND REFRIGERANT  
COMPONENTS CLEARANCES  
PER PREVAILING CODES



TOP DISCHARGE AREA SHOULD BE UNRESTRICTED FOR AT LEAST 1524 (5 FEET) ABOVE UNIT. UNIT SHOULD BE PLACED SO ROOF RUN-OFF WATER DOES NOT POUR DIRECTLY ON UNIT, AND SHOULD BE AT LEAST 305 (12") FROM WALL AND ALL SURROUNDING SHRUBBERY ON TWO SIDES, OTHER TWO SIDES UNRESTRICTED.



LIQUID LINE SERVICE VALVE  
"C" O.D. FEMALE BRAZED  
CONNECTION WITH 1/4" SAE FLARE  
PRESSURE TAP FITTING.

**DETAIL X**

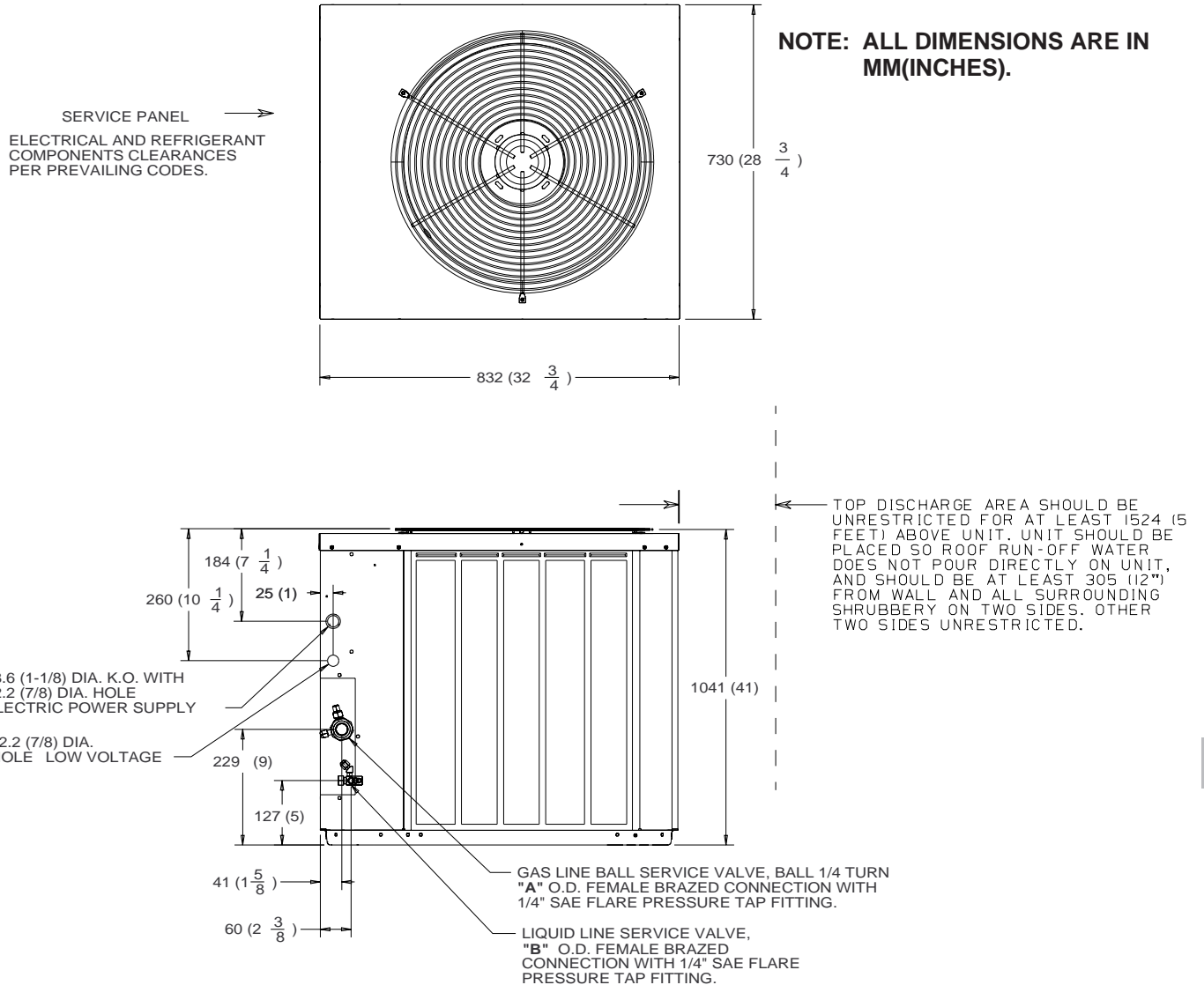
GAS LINE SERVICE VALVE  
"B" O.D. FEMALE BRAZED  
CONNECTION WITH 1/4" SAE FLARE  
PRESSURE TAP FITTING.

MODEL	A	B	C
TTB030C100A0	25 1/2	3/4	5/16
TTB036C100A0	32 1/2	7/8	3/8
TTB042C100A0	32 1/2	7/8	3/8
TTB048C100A0	32 1/2	1 1/8	3/8

NOTE: TABLE IN INCHES ONLY.

# Dimensions

## TTB060C



**FIG. 1**

MODEL	A	B
TTB060C100B0	1 1/8	3/8

NOTE: TABLE IN INCHES ONLY.



# Mechanical Specifications Options

## General

This unit is fully charged from the factory for up to 25 feet of piping. This unit is designed to operate at outdoor ambient temperatures as high as 115°F. Cooling capacities matched with a wide selection of air handlers and furnace coils that are A.R.I. certified. The unit is UL listed for outdoor application.

## Casing

Unit casing is constructed of heavy gauge, galvanized steel and painted with a weather-resistant powder paint.

## Refrigerant Controls

Refrigeration system controls include condenser fan and compressor contactor. High and low pressure controls are inherent to the compressor. A factory installed liquid line dryer is standard.

## Compressor

The Climatuff® compressor features a 5-year limited warranty, internal over temperature and pressure protection, total epoxy dipped hermetic motor windings. Other features include: roto lock suction and discharge refrigerant connections, centrifugal oil pump, "special steel alloy" valves in valve plate assembly, and internal spring mounts to reduce vibration and noise.

## Condenser Coil

The Spine Fin™ coil is continuously wrapped, corrosion resistant all aluminum with minimum brazed joints. This coil is 3/8 inch O.D. seamless aluminum glued to a continuous aluminum fin. The coil is protected on all four sides by louvered panels and has a 5-year limited warranty.

## Low Ambient Cooling

As manufactured, this unit has a cooling capability when applied with the following indoor refrigerant control: FCCV to 55°F. The addition of an evaporator defrost control permits operation when applied with the following indoor refrigerant control: FCCV to 40°F.

## Accessories

**Thermostats** – Cooling only and heat/cooling (manual and automatic changeover). Sub-base to match thermostat and locking thermostat cover.

**Quick Start Kit** – Permits low voltage operation to 180 volts or for evaporator coils with non-bleed expansion devices.

**Evaporator Defrost Control** – See Low Ambient Cooling.



The Trane Company  
Unitary Products Group  
6200 Troup Highway  
Tyler, TX 75707

An American-Standard Company



File No. PL-UN-S/S-TTB-D-7 7/97  
Supersedes TTB-D-6 2/96

Since The Trane Company has a policy of continuous product improvement, it reserves the right to change design and specifications without notice.