



Ruud Achiever® Series Two-Stage Downflow/Horizontal Gas Furnaces



RGTM- Series

95% A.F.U.E.

Input Rates of 60, 75, 90 & 105 kBTU
[17.58, 22, 26.38 & 30.77 kW]

With *Dual Comfort Control™*



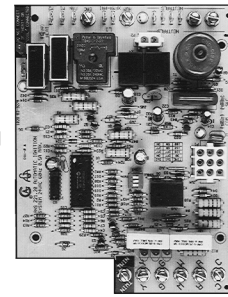
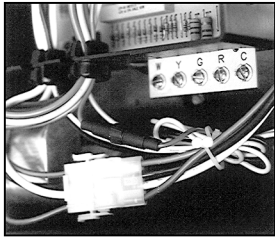
†A.F.U.E. (Annual Fuel Utilization Efficiency) calculated in accordance with Department of Energy test procedures.

- The Ruud *Achiever*® Series 95% A.F.U.E. with Dual Comfort Control™ line of downflow/horizontal gas furnaces are designed for utility rooms, closets, alcoves, or attics. The RGTM is shipped in the downflow configuration and is easily converted for horizontal left-hand airflow applications. The design is certified by CSA.
- Two stages of operation to save energy and maintain optimal comfort level.
- Furnace operates at 70% capacity for low-heat and 100% capacity for high-heat.
- Compatible with single or two-stage thermostat. (For optimal performance a two-stage thermostat is recommended.)
- Heat exchanger is constructed of all stainless steel for maximum corrosion resistance and thermal fatigue reliability.
- Low profile "34 inch" design is lighter and easier to handle and leaves room for optional accessories.
- Left or right side gas, electric, and condensate drainage connections.
- Integrated control board manages all operational functions and provides hookups for humidifier and electronic air cleaner.
- An insulated blower compartment, a slow-opening gas valve and a specially designed inducer system make it one of the quietest furnaces on the market today.
- Variable speed blower motor technology provides ultimate humidity control, quieter sound levels and year-round energy savings.
- Optional indoor or outdoor combustion air. In addition, combustion air may be piped to either the top or side of the cabinet on all downflow models. A special molded fitting is provided to ease installation.
- Solid bottom is standard.
- Control board diagnostics.
- A variety of cooling coils and plenums designed to use with the Ruud *Achiever*® Series 95% A.F.U.E. gas furnaces are available as optional accessories for air conditioning models.

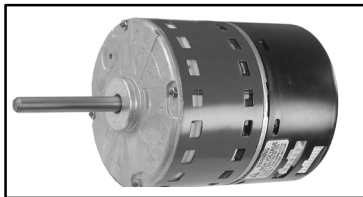
TABLE OF CONTENTS

Standard & Optional Equipment	3
Physical Data & Specifications	4
Model Number Identification	5
Dimensional Data	6-7
Blower Performance Data	8
Accessories	9
Limited Warranty	10

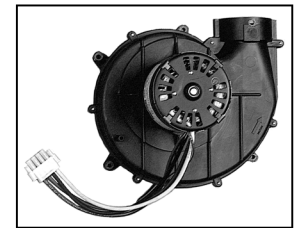
FUSE PROTECTION



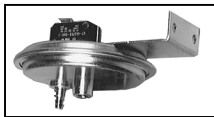
INTEGRATED
FURNACE
CONTROL



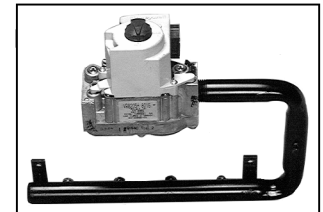
ECM MOTOR



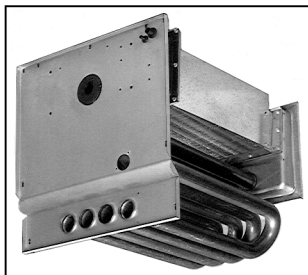
DRAFT INDUCER



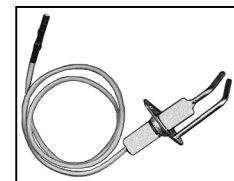
PRESSURE SWITCH



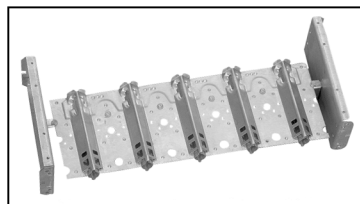
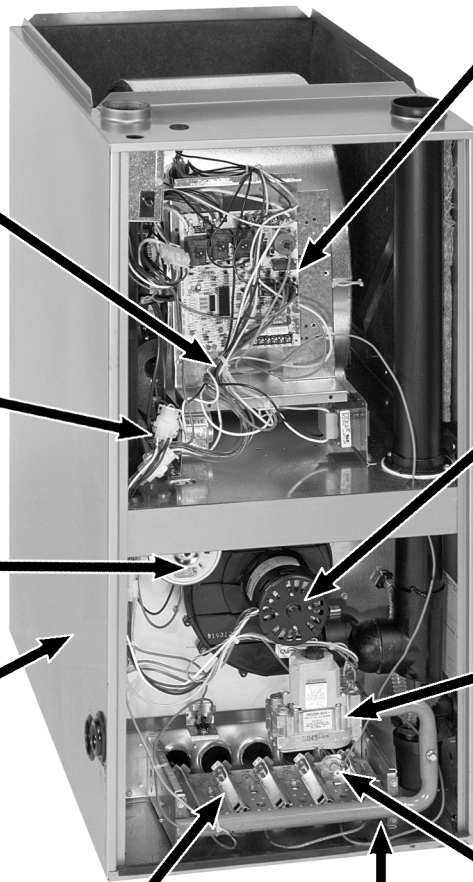
GAS VALVE AND
MANIFOLD



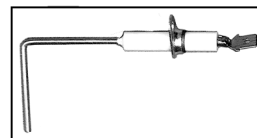
PRIMARY AND SECONDARY
HEAT EXCHANGER



DIRECT SPARK IGNITION



IN-SHOT BURNERS



REMOTE SENSOR

STANDARD EQUIPMENT

Completely assembled and wired; heat exchanger; primary: 409 stainless steel, secondary: 29-4C stainless steel; induced draft; pressure switches; redundant main gas control; blower compartment door safety switch; solid state time on/off blower control; limit controls; manual shut-off valve; 100% safety lock out; cool fan off delay; field selectable heat fan off delay; one hour automatic retry; power and self-test diagnostics; flame sense current diagnostics; electronic air cleaner connections; twinning features; humidifier connections; humidifier on/off delay; low speed continuous fan option; single speed option for heating and cooling applications; pressure regulator for natural and L.P. (propane) gasses; transformer; direct drive, multi-speed blower motor. (Please note: a thermostat is not included as standard equipment.)

OPTIONAL EQUIPMENT

Side and bottom filter racks; return air cabinet for all sizes.
NOTE: Furnace is not listed for use with fuels other than natural or L.P. (propane) gas.
All models can be converted by a qualified distributor or local service dealer to use L.P. (propane) gas without changing burners. Factory approved kits must be used to convert from natural to L.P. (propane) gas and may be ordered as optional accessories from a parts distributor.
For L.P. (propane) operation, refer to Conversion Kit Index Form.

WARNING
THIS FURNACE IS NOT APPROVED
OR RECOMMENDED
FOR USE IN MOBILE HOMES

Physical Data and Specifications—Downflow/Horizontal Models

U.S. and Canadian Models

MODEL NUMBERS	RGTM-06+MAES	RGTM-07+RBGS	RGTM-09+ZAJ5**	RGTM-10+RBJS
HIGH FIRE INPUT BTU/HR [kW] ①	60,000 [17.58]	75,000 [21.98]	90,000 [26.38]	105,000 [30.77]
LOW FIRE INPUT BTU/HR [kW] ②	42,000 [12.31]	52,500 [15.39]	63,000 [18.46]	73,500 [21.54]
HEATING CAPACITY BTU/HR [kW]	56,000 [16.41]	70,000 [20.51]	84,000 [24.62]	97,000 [28.43]
HIGH ALTITUDE INPUT 8000' ②	40,800 [11.96]	51,000 [14.95]	61,200 [17.94]	71,400 [20.93]
HIGH ALTITUDE OUTPUT AT 8000' (HIGH FIRE) [kW] ②	37,944 [11.12]	47,430 [13.90]	56,916 [16.69]	66,402 [19.46]
BLOWER (D x W) [mm]	11 x 7 [279 x 178]	11 x 10 [297 x 254]	12 x 11 [305 x 279]	11 x 10 [297 x 254]
MOTOR H.P. [W]—SPEEDS—TYPE	1/2 [373] VAR. SPEED	3/4 [559] VAR. SPEED	1 [746] VAR. SPEED	1 [746] VAR. SPEED
MOTOR FULL LOAD AMPS	8.7	12	12	12
MINIMUM EXT. STATIC PRESSURE (IN. W.C.) [kPa]	.12 [.029]	.12 [.029]	.15 [.037]	.20 [.049]
MAXIMUM EXT. STATIC PRESSURE (IN. W.C.) [kPa]	.80 [0.2]	.80 [0.2]	.80 [0.2]	.80 [0.2]
LOW HEATING CFM @ 0.2" [0.049 kPa] W.C. E.S.P. [L/s]*	800 [376]	1100 [517]	1350 [635]	1460 [686]
HIGH HEATING CFM @ 0.2" [0.049 kPa] W.C. E.S.P. [L/s]*	1048 [493]	1408 [662]	1660 [780]	1752 [823]
HIGH COOLING CFM @ .8" [.124 kPa] W.C. E.S.P. [L/s] ④	A = 1200	A = 1600	A = 1900	A = 2000
	B = 1000	B = 1400	B = 1600	B = 1600
	C = 800	C = 1200	C = 1400	C = 1400
	D = 600	D = 1000	D = 1200	D = 1200
LOW COOLING CFM @ .8" [.124 kPa] W.C. E.S.P. [L/s] ④	A = 900	A = 1200	A = 1500	A = 1500
	B = 750	B = 1050	B = 1200	B = 1200
	C = 600	C = 900	C = 1050	C = 1050
	D = 450	D = 750	D = 900	D = 900
TEMPERATURE RISE-HIGH FIRE RANGE IN DEGREES °F [°C]	35-65 [19.4-36.1]	30-60 [16.7-33.3]	30-60 [16.7-33.3]	35-65 [19.4-36.1]
TEMPERATURE RISE-LOW FIRE RANGE IN DEGREES °F [°C]	30-60 [16.7-33.3]	25-55 [13.9-30.6]	25-55 [13.9-30.6]	30-60 [16.7-33.3]
MAX. OUTLET AIR TEMPERATURE	170	170	165	180
RETURN AIR CABINETS (OPT.) RXGR-FILTER SIZE [mm]	C17B (2) 12" x 16" [305 x 406]	C21B (2) 12" x 16" [305 x 406]	C21B (2) 12" x 16" [305 x 406]	C29B (2) 14" x 16" [609 x 406]
STANDARD, HIGH VELOCITY PERMANENT FILTER (IN.)	15 ³ / ₄ x 25 x 1	15 ³ / ₄ x 25 x 1	19 ¹ / ₄ x 25 x 1	22 ³ / ₄ x 25 x 1
APPROX. SHIPPING WEIGHT (LBS.) [kg]	123 [56.0]	139 [63.2]	148 [67.3]	165 [75]
AFUE ③	95.0%	95.0%	95.0%	95.0%

NOTES: All models are 115V, 60HZ, 1 phase. Gas connection size for all models is 1/2" [13 mm] N.P.T.

① See Conversion Kit Index Form for high altitude derate.

② Canadian installations only.

③ In accordance with D.O.E. test procedures.

④ CFM is Nominal Value. Positive airflow adjustments will increase the Heating CFM—See Installation Instructions.

*E=Standard

*N=NOx Models

**12 x 11 Housing, 11 x 10 Wheel

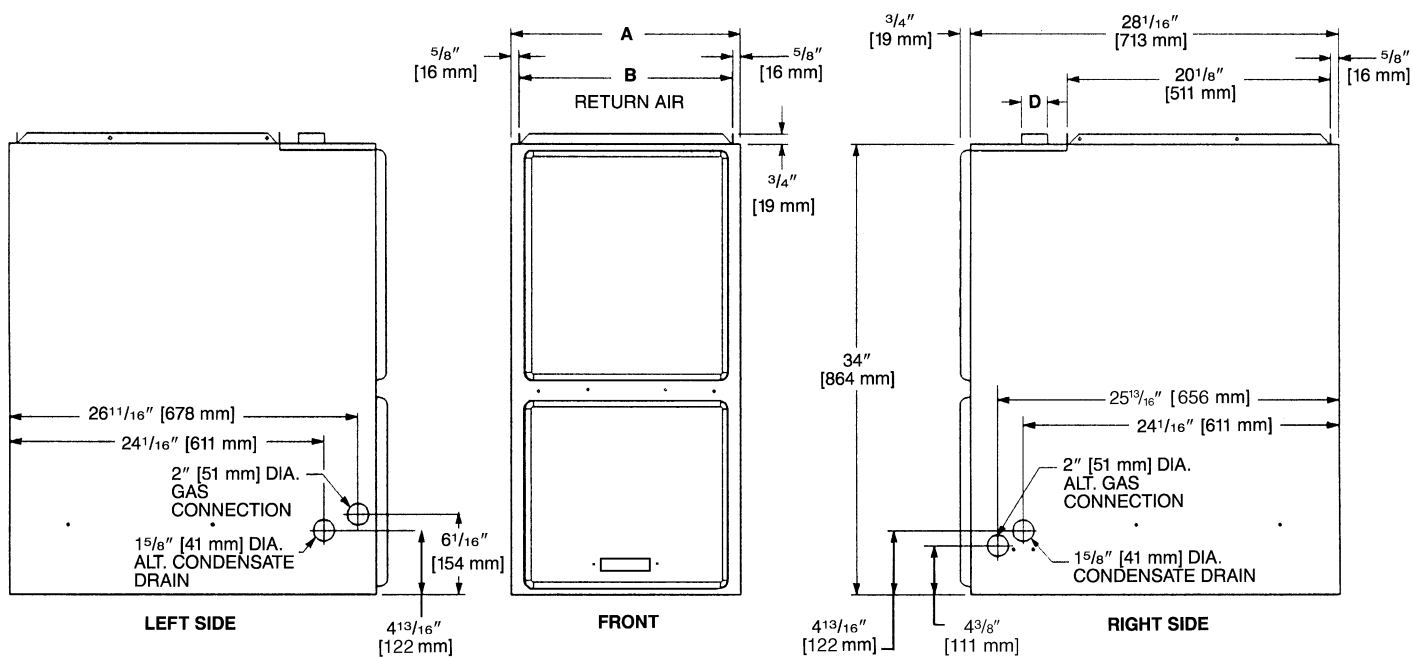
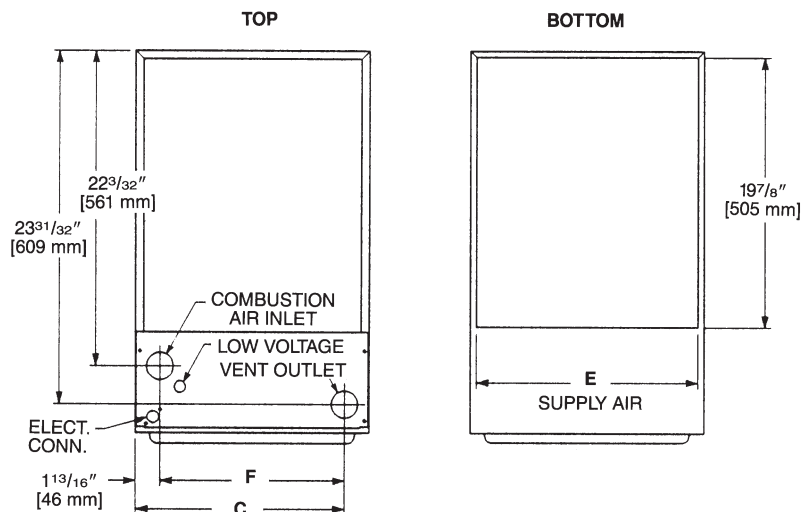
WARNING: Some heating airflow values may be higher than those required for cooling. Be sure to size duct systems for highest possible airflow value.

[] Designates Metric Conversions

Model Number Identification

<u>R</u>	<u>G</u>	<u>T</u>	<u>M</u>	<u>—</u>	<u>07E*</u>	<u>R</u>	<u>B</u>	<u>G</u>	<u>S</u>	<u>278**</u>	
Ruud	Gas Furnace	Downflow/ Horizontal Condensing Gas Furnace	Design Series		Heating Input Designation	Blower Size	Variations	Heat/Cool Designation	Fuel Code	Option Code for High Altitude	
					Electric Ignition	Input BTU/HR	M = 11 x 7 [279 x 178 mm] R = 11 x 10 [279 x 254 mm] Z = 12 x 11** [305 x 279 mm]	A = Std. B = Wide	E = 1100-1300 CFM [519-613.5 L/s] G = 1500-1700 CFM [707.9-802.3 L/s] J = 1900-2100 CFM [896.7-991.1 L/s]	S = U.S. and Canadian	
					04* 45,000 [13.19 kW] 06* 60,000 [17.58 kW] 07* 75,000 [22 kW] 09* 90,000 [26.38 kW] 10* 105,000 [30.77 kW] 12* 120,000 [35.17 kW]						
					NOTES: *E = Standard *N = NO _x Models **12 x 11 Housing, 11 x 10 Wheel			Available Models: RGTM-06EMAES RGTM-06NMAES RGTM-06EMAES278 RGTM-07ERBGS	RGTM-07NRBGS RGTM-09EZAJS** RGTM-09NZAJS**	RGTM-09EZAJS278** RGTM-10ERJS RGTM-10NERJS	

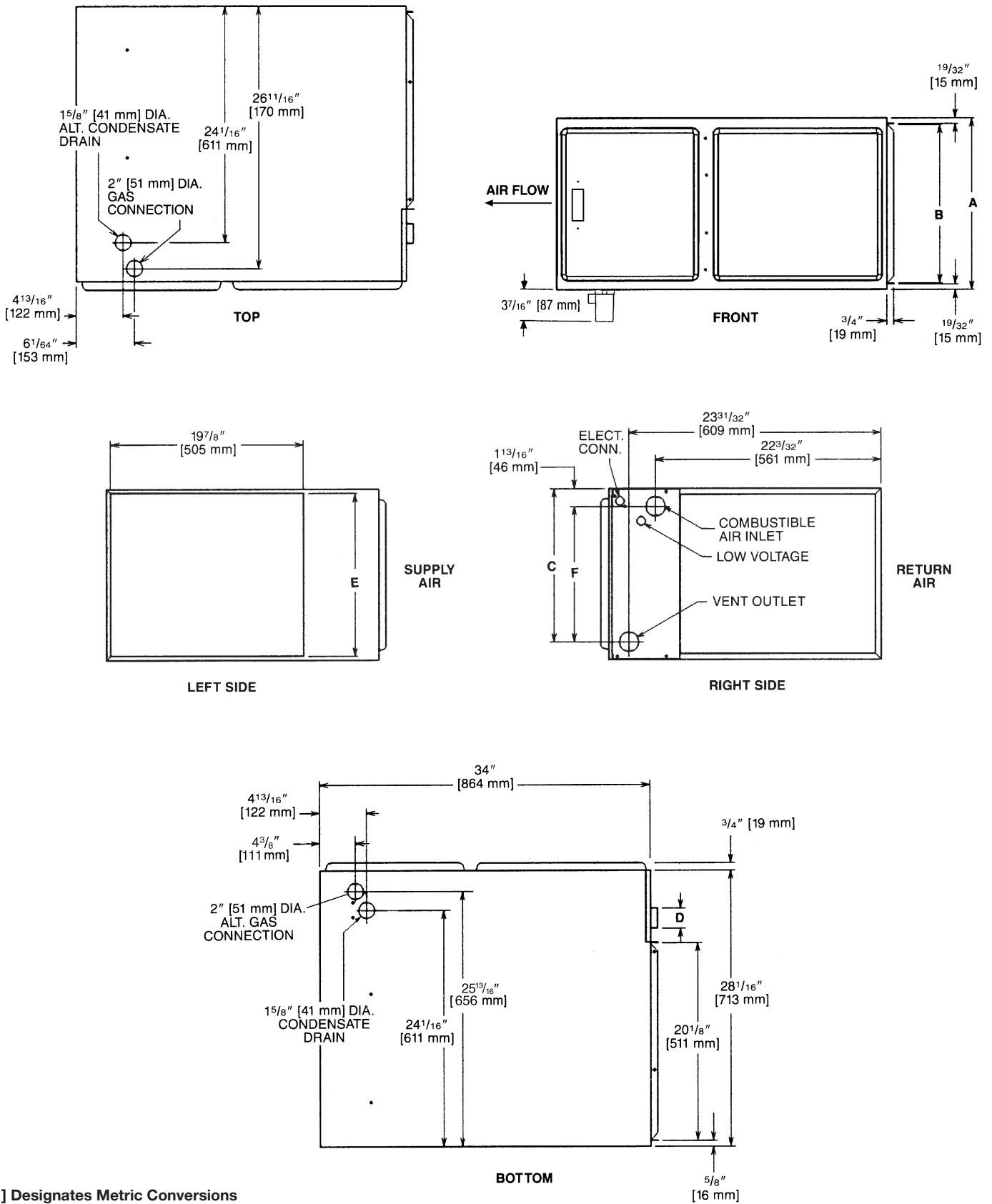
[] Designates Metric Conversions



MODEL RGTM-	A	B	C	D	E	F	LEFT SIDE	MINIMUM CLEARANCE (IN.) [mm]					SHIP WGTS. [kg]
								RIGHT SIDE	BACK	TOP	FRONT	VENT	
06	17 1/2 [445]	16 11/32 [415]	15 5/8 [397]	2 [51]	16 5/8 [422]	13 7/8 [352]	0	0	0	1 [25]	2 [51]	0	123 [56]
07	21 [533]	19 27/32 [504]	19 3/16 [486]	2 [51]	20 1/8 [511]	17 3/8 [441]	0	0	0	1 [25]	2 [51]	0	123 [56]
09	21 [533]	19 27/32 [504]	19 3/16 [486]	2 [51]	20 1/8 [511]	17 3/8 [441]	0	0	0	1 [25]	2 [51]	0	148 [67]
10	24 1/2 [621]	23 11/32 [593]	22 5/8 [575]	2 [51]	23 5/8 [600]	20 7/8 [530]	0	0	0	1 [25]	2 [51]	0	165 [75]

[] Designates Metric Conversions

IMPORTANT NOTE: Horizontal furnace may be installed for horizontal left hand air supply **ONLY**. The condensate trap provided for horizontal application must be installed in the field beneath the unit as directed in the furnace installation & Operating Instructions.



[] Designates Metric Conversions

IMPORTANT NOTE: Horizontal furnace may be installed for horizontal left hand air supply ONLY. The condensate trap provided for horizontal application must be installed in the field beneath the unit as directed in the furnace Installation & Operating Instructions.

MODEL RGTM-	BLOWER SIZE (D x W) IN. [mm]	ECM MOTOR H.P. [W]	BLOWER SPEED	CFM [L/s] AIR DELIVERY EXTERNAL STATIC PRESSURE INCHES WATER COLUMN [kPa]
				0.1 [.02] – 0.8 [.20]
RGTM-06*M	11 x 7 [279 x 178]	1/2 [373]	HIGH MED-HI MED LOW	1200 [566] 1000 [472] 800 [378] 600 [283]
RGTM-07*R	11 x 10 [279 x 254]	3/4 [559]	HIGH MED-HI MED LOW	1600 [755] 1400 [661] 1200 [566] 1000 [472]
RGTM-09*Z**	12 x 11 [305 x 279]	1 [746]	HIGH MED-HI MED LOW	1900 [897] 1600 [755] 1400 [661] 1200 [566]
RGTM-10*R	11 x 10 [279 x 254]	1 [746]	HIGH MED-HI MED LOW	2000 [944] 1600 [755] 1400 [661] 1200 [566]

*E=Standard

*N=NOx Models

NOTE: CFM values represent furnace-only airflow ratings.

**12 x 11 Housing, 11 x 10 Wheel

[] Designates Metric Conversions

VENT TERMINATION KITS CONCENTRIC: HORIZONTAL/VERTICAL =

RXGY-E03A (US & Canadian Installations)

HORIZONTAL TWO PIPE: RXGY-D02, RXGY-D03, RXGY-D04
(US Installations)

RXGY-D02A, RXGY-D03A, RXGY-D04A (Canadian Installations)

RXGY-G02 (US Only)

CONDENSATE PUMP KIT: RXGY-B01

NEUTRALIZER KIT: RXGY-A01

FOSSIL FUEL KIT: RXPF-F01, RXPF-F02 (TVA)

RETURN AIR PLENUM: RXGR-C17B, RXGR-C21B, RXGR-C24B

FOR HIGH ALTITUDES:

HIGH ALTITUDE KIT: NOT REQUIRED

NOTE: For Canadian installations only, an optional derate (manifold gas pressure reduction) method may be used to adjust the furnace for altitude. See Installation Instructions for more information. This optional method may **NOT** be used for U.S. installations.

[] Designates Metric Conversions

PLENUM DATA FOR "A" COILS

Plenum adapters are required in some instances for use on downflow applications when plenum and furnace size do not match.

FURNACE WIDTH IN. [mm]	PLENUM WIDTH IN. [mm]	PLENUM ADAPTER UPFLOW	COIL PLENUM
14 [356]	16 ¹ / ₄ [413]	RXAA-C171	RXAL-B16BU
14 [356]	20 ¹ / ₄ [514]	RXAA-C172	RXAL-B20BU
17 ¹ / ₂ [445]	16 ¹ / ₄ [413]	RXAA-C185	RXAL-B16BU
17 ¹ / ₂ [445]	20 ¹ / ₄ [514]	RXAA-C173	RXAL-B20BU
17 ¹ / ₂ [445]	21 ⁵ / ₈ [549]	RXAA-C187	RXAL-B21BU
17 ¹ / ₂ [445]	25 ¹ / ₄ [641]	RXAA-C174	RXAL-B25BU
21 [533]	25 ¹ / ₄ [641]	RXAA-C175	RXAL-B25BU
21 [533]	22 ¹ / ₄ [565]	RXAA-C176	RXAL-B22BU
21 [533]	21 ⁵ / ₈ [549]	RXAA-C188	RXAL-B21BU
24 ¹ / ₂ [622]	25 ¹ / ₄ [641]	RXAA-C177	RXAL-B25BU
24 ¹ / ₂ [622]	21 ⁵ / ₈ [549]	RXAA-C187	RXAL-B21BU

LP CONVERSION KITS:

U.S./Canadian RXGJ-FP26 or RXGJ-FP21

EXTERNAL BOTTOM FILTER RACK: RXGF-CB

EXTERNAL SIDE FILTER RACK: RXGF-CA

FILTER RACK FILTER SIZES* INCHES [mm]		
MODEL RGTM-	RXGF-CB (BOTTOM)	RXGF-CA (SIDE)
06	15 ³ / ₄ x 25 [400 x 635]	15 ³ / ₄ x 25 [400 x 635]
07ER 07NR	19 ¹ / ₄ x 25 [489 x 635]	15 ³ / ₄ x 25 [400 x 635]
09	19 ¹ / ₄ x 25 [489 x 635]	15 ³ / ₄ x 25 [400 x 635]
10	22 ³ / ₄ x 25 [578 x 635]	15 ³ / ₄ x 25 [400 x 635]

*Filter racks are shipped without filters.

Filters shipped with furnace may be used or a suitable 1" [25.4 mm] filter.

GENERAL TERMS OF LIMITED WARRANTY*

Ruud will furnish a replacement for any part of this product which fails in normal use and service within the applicable period stated, in accordance with the terms of the limited warranty.

*For complete details of the Limited and Conditional Warranties, including applicable terms and conditions, contact your local contractor or the Manufacturer for a copy of the product warranty certificate.

Conditional Unit Replacement (Registration Required)	Ten (10) Years
Conditional Parts (Registration Required)	Ten (10) Years
Heat Exchanger	Limited Lifetime



In keeping with its policy of continuous progress and product improvement, Ruud reserves the right to make changes without notice.

Ruud Heating, Cooling & Water Heating • P.O. Box 17010
Fort Smith, Arkansas 72917 • www.ruud.com

Ruud Canada • 125 Edgeware Road, Unit 1
Brampton, Ontario • L6Y 0P5

RELY ON RUUD.™

PRINTED IN U.S.A 04/12 QG FORM NO. G22-524