



The new degree of comfort.™

Rheem *Classic*® Series Two-Stage Upflow/Horizontal Gas Furnaces

RGPQ- Series

80% A.F.U.E.†

Models with Input Rates from

45-105 kBTU

(U.S. & Canadian Models)



†A.F.U.E. (Annual Fuel Utilization Efficiency) calculated in accordance with Department of Energy test procedures.

- The Rheem *Classic*® Series 2-Stage line of upflow/horizontal gas furnaces are designed for utility rooms, closets, alcoves, or attics. **Because of the low-profile 34 inch [864 mm] height, the upflow model can also be used to satisfy most applications that traditionally call for a horizontal furnace.**
- The design is certified by CSA International.
- Patented heat exchanger, constructed of aluminized steel for the maximum in corrosion resistance and thermal fatigue reliability.
- Low profile “34 inch” design is lighter and easier to handle, and leaves room for optional equipment.
- Convertible from upflow to horizontal left or right without field conversion.
- Left or right side gas and electric inlet connections with quick, simple change.
- Direct spark ignition models equipped with remote sense and feature an integrated board with humidifier and electronic air cleaner hookups.
- Insulated blower compartment, a two stage gas valve and a specially designed two speed draft inducer motor make it one of the quietest furnaces on the market today.
- Pre-paint galvanized steel cabinet.
- Molded permanent filter.
- Grab-holes in doors to aid in easy door removal and replacement.
- Compatible with single or two-stage thermostat. (For optimal performance two-stage thermostat recommended.)
- A variety of cooling coils and plenums designed to use with Rheem *Classic*® Series 2-Stage gas furnaces are available as optional accessories.
- Furnaces can be installed in an upflow position or laid on either side in a horizontal position. Field conversion not required.



TABLE OF CONTENTS

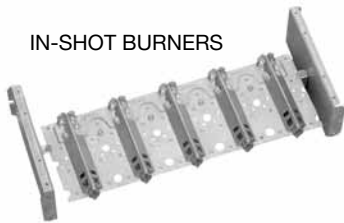
Standard & Optional Equipment	3
Model Features/Physical Data & Specifications.....	4
Model Number Identification	5
Dimensional Data	6-7
Blower Performance Data.....	8
Accessories.....	9
Limited Warranty	10



TWO-SPEED DRAFT INDUCER MOTOR



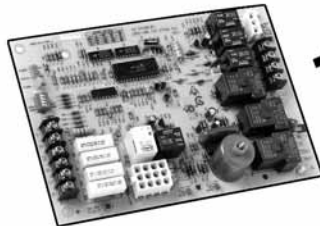
HEAT EXCHANGER



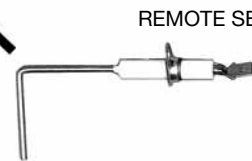
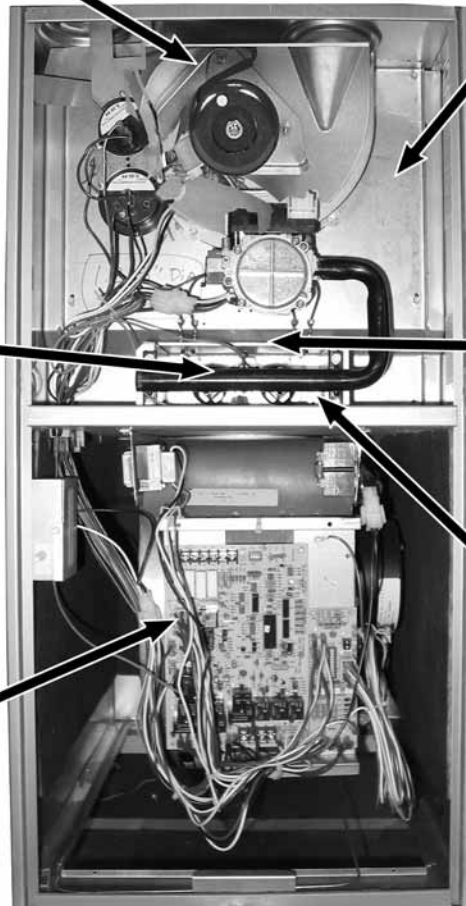
IN-SHOT BURNERS



DIRECT SPARK IGNITOR



INTEGRATED FURNACE CONTROL



REMOTE SENSOR

STANDARD EQUIPMENT

Completely assembled and wired; 2 speed draft inducer; high and low pressure switches; redundant 2 stage main gas control; blower compartment door safety switch; solid state time on/time off blower control; limit control; transformer; direct drive multi-speed blower motor. Furnaces are equipped with cooling/heating relay and transformer (40VA) ready for air conditioning applications. (Please note: a thermostat is not included as standard equipment.) Flame sensor diagnostics; **Twinning options**; fused-protection (secondary).

OPTIONAL EQUIPMENT

Side filter frame assembly. Return air cabinet for all sizes.

NOTE: Furnace is not listed for use with fuels other than natural or L.P. (propane) gas.

The complete terms of limited and other warranties are available at our sales office, or through local installer.

All models can be converted by a qualified local service professional to use L.P. (propane) gas without changing burners. Factory approved kits must be used to convert from natural to L.P. (propane) gas and may be ordered as optional accessories.

For L.P. (propane) operation, refer to Conversion Kit Index Form.

WARNING
THIS FURNACE IS NOT APPROVED
OR RECOMMENDED
FOR USE IN MOBILE HOMES



Model Features

- Patented heat exchanger, constructed of aluminized steel for the maximum in corrosion resistance and thermal fatigue reliability.
- Low profile “34 inch” design is lighter and easier to handle, and leaves room for optional equipment.
- Convertible from upflow to horizontal left or right without field conversion.
- Left or right side gas and electric inlet connections with quick, simple change.
- Direct spark ignition models equipped with remote sense and feature an integrated board with humidifier and electronic air cleaner hookups.
- Insulated blower compartment, a two stage gas valve and a specially designed two speed draft inducer motor make it one of the quietest furnaces on the market today.
- Pre-paint galvanized steel cabinet.
- Molded permanent filter.
- Grab-holes in doors to aid in easy door removal and replacement.
- Compatible with single or two-stage thermostat. (For optimal performance two-stage thermostat recommended.)
- A variety of cooling coils and plenums designed to use with Rheem *Classic*® Series 2-Stage gas furnaces are available as optional accessories.

Physical Data and Specifications—Downflow Models U.S. and Canadian Models

MODEL NUMBERS RGPQ- SERIES	05EAUER 05NAUER	07EAMER 07NAMER	07EAMGR 07NAMGR	10EAMER 10NAMER	10EBRJR 10NBRJR	12EARJR 12NARJR	15EARJR 15NARJR
High Input–BTU–BTU/Hr [kW] ②	50,000 [15]	75,000 [22]	75,000 [22]	100,000 [29]	100,000 [29]	125,000 [37]	150,000 [44]
Heating Capacity–BTU/Hr [kW] ①	40,900 [12]	61,280 [18]	61,410 [18]	81,470 [23]	81,340 [23]	101,660 [29]	121,920 [35]
Low Input–BTU/Hr [kW]	35,000 [10]	52,500 [15]	52,500 [15]	70,000 [20]	70,000 [20]	87,500 [25]	105,000 [30]
Heating Capacity–BTU/Hr [kW]	28,000 [8]	41,600 [12]	41,600 [12]	56,000 [16]	56,000 [16]	70,080 [20]	84,000 [24]
Heating–Ext. Static Pressure [kPa]	.10 [.025]	.12 [.029]	.12 [.029]	.15 [.037]	.15 [.037]	.20 [.05]	.20 [.05]
Blower (D x W) [mm]	11 x 6 [279 x 152]	11 x 7 [279 x 178]	11 x 7 [279 x 178]	11 x 7 [279 x 178]	11 x 10 [279 x 254]	11 x 10 [279 x 254]	11 x 10 [279 x 254]
Motor H.P.–[W] Speeds–Type	1/2 [373] 4-PSC	1/2 [373] 4-PSC	3/4 [559] 4-PSC	1/2 [373] 4-PSC	3/4 [559] 4-PSC	3/4 [559] 4-PSC	3/4 [559] 4-PSC
Motor Full Load Amps	7.1	7.1	9.5	7.1	9.5	9.5	9.5
Heating Speed–High Fire	MED-LOW	MED-HIGH	MED-LOW	MED-HIGH	MED-HIGH	MED-HIGH	MED-HIGH
Heating Speed–Low Fire	LOW	MED-LOW	LOW	LOW	LOW	LOW	LOW
Cooling Speed	HIGH	HIGH	MED-HIGH	HIGH	HIGH	HIGH	HIGH
Cooling CFM @ .5" [kPa] E.S.P. (Nominal) [L/s]	1200 [566]	1200 [566]	1600 [755]	1200 [566]	2000 [944]	2000 [944]	2000 [944]
Max. E.S.P. (In. W.C.) [kPa]	0.5 [.12]	0.5 [.12]	0.5 [.12]	0.5 [.12]	0.5 [.12]	0.5 [.12]	0.5 [.12]
Temperature Rise Range °F High Input [°C]	25-55 [13.9-30.6]	30-60 [16.7-33.3]	25-55 [13.9-30.6]	45-75 [25-41.7]	30-60 [16.7-33.3]	35-65 [19.4-36.1]	50-80 [27.8-44.4]
Temperature Rise Range °F Low Input [°C]	20-50 [11.1-27.8]	25-55 [13.9-30.6]	15-45 [8.3-25.0]	35-65 [19.4-36.1]	25-55 [13.9-30.6]	30-60 [16.7-33.3]	40-70 [22.2-38.9]
Max. Outlet Air Temp. °F [°C]	155 [68.3]	165 [73.9]	155 [68.3]	190 [87.7]	170 [76.6]	180 [82.2]	190 [87.7]
Standard Filter–In. [mm]	15 ³ / ₄ x 25 [400 x 635]	15 ³ / ₄ x 25 [400 x 635]	15 ³ / ₄ x 25 [400 x 635]	15 ³ / ₄ x 25 [400 x 635]	19 ¹ / ₄ x 25 [489 x 635]	22 ³ / ₄ x 25 [578 x 635]	22 ³ / ₄ x 25 [578 x 635]
Approx. Shipping Weight (Lbs.) [kg]	85 [39]	105 [48]	105 [48]	115 [52]	120 [54]	140 [63]	150 [68]
Return Air Cabinets (Opt.) RXGR- Filter Size–In. [mm]	C14B (2) 12 x 16 [305 x 406]	C17B (2) 12 x 16 [305 x 406]	C17B (2) 12 x 16 [305 x 406]	C17B (2) 12 x 16 [305 x 406]	C21B (2) 20 x 16 [508 x 406]	C24B (2) 24 x 16 [610 x 406]	C24B (2) 24 x 16 [610 x 406]
AFUE ①	80.0%	80.0%	80.0%	80.0%	80.0%	80.0%	80.0%

NOTES: All models are 115V, 60HZ, 1Ø. Gas connection size for all models is 1/2" [12.7 mm] N.P.T.

① In accordance with D.O.E. test procedures.

② See Conversion Kit Index Form for high altitude derate in U.S. applications. For Canadian applications, reference the furnace installation instructions.

[] Designates Metric Conversions



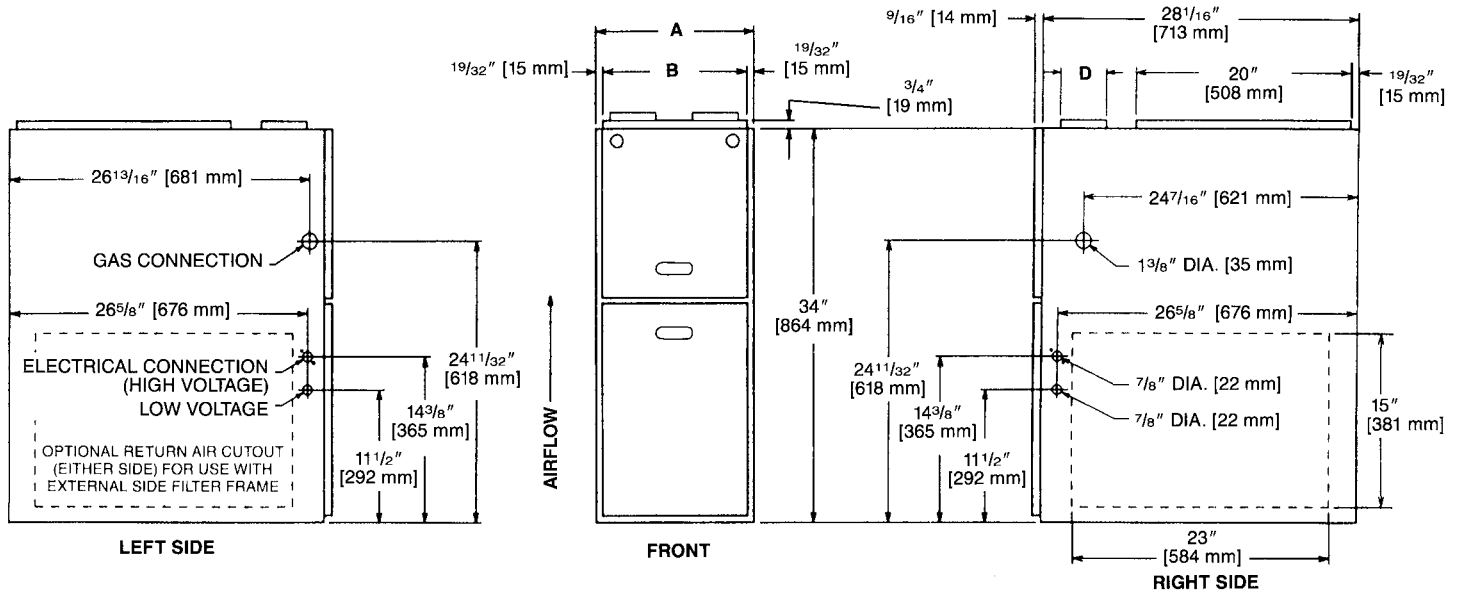
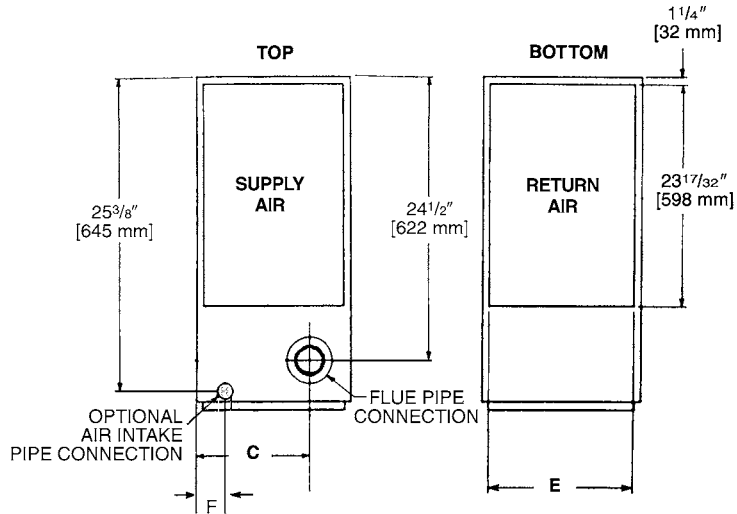


Model Number Identification—Upflow Models

R	G	P	Q	—	07E	A	M	E	R
Rheem	Gas Furnace	Upflow/ Horizontal	Horizontal Series		Heating Input Designation	Variations	Blower Designation	Heating & Cooling Designation	Fuel Type
					Electric Ignition	A = Std. Cabinet	U = 11 x 6 [279 x 152 mm]	E = 1100-1300 CFM [519-614 L/s]	R = Natural Gas, U.S. and Canadian Standard Furnace
					NOx Models	B = Wide Cabinet	M = 11 x 7 [279 x 178 mm]	J = 1900-2100 CFM [897-991 L/s]	
					Input BTU/HR		R = 11 x 10 [279 x 254 mm]	G = 1500-1700 CFM [708-802 L/s]	
					05E	05N	50,000 [15 kW]		
					07E	07N	75,000 [22 kW]		
					10E	10N	100,000 [29 kW]		
					12E	12N	125,000 [37 kW]		
					15E	15N	150,000 [44 kW]		

[] Designates Metric Conversions

Upflow Dimensions



Upflow Dimensions and Clearance to Combustible Material (inches) [mm]

MODEL RGPQ-	A	B	C	D	E	F	REDUCED CLEARANCES (IN.) [mm]						
							LEFT SIDE	RIGHT SIDE	BACK	TOP	FRONT	VENT	SHIP. WGTS. (LBS.) [kg]
05	14 [356]	12 ^{27/32} [326]	10 ^{5/8} [270]	⓪	11 1/2 [292]	1 7/8 [48]	0	4 [102] ②	0	1 [25]	3 [76]	6 [152] ③	85 [38.6]
07	17 1/2 [445]	16 ^{11/32} [415]	12 ^{3/8} [314]	⓪	15 [381]	2 1/2 [64]	0	3 [76] ②	0	1 [25]	3 [76]	6 [152] ③	105 [47.6]
10 (A)	17 1/2 [445]	16 ^{11/32} [415]	12 ^{3/8} [314]	⓪	15 [381]	2 1/2 [64]	0	3 [76] ②	0	1 [25]	3 [76]	6 [152] ③	115 [52.2]
10 (B)	21 [533]	19 ^{27/32} [504]	14 3/8 [359]	⓪	18 1/2 [470]	2 1/2 [64]	0	0	0	1 [25]	3 [76]	6 [152] ③	120 [54.4]
12	24 1/2 [622]	23 ^{11/32} [593]	15 7/8 [403]	⓪	22 [559]	2 1/2 [64]	0	0	0	1 [25]	3 [76]	6 [152] ③	140 [63.5]
15	24 1/2 [622]	23 ^{11/32} [593]	15 7/8 [403]	⓪	22 [559]	2 1/2 [64]	0	0	0	1 [25]	3 [76]	6 [152] ③	150 [68]

NOTES: ① May require a 3" [76 mm] to 4" [102 mm] or 3" [76 mm] to 5" [127 mm] adapter.

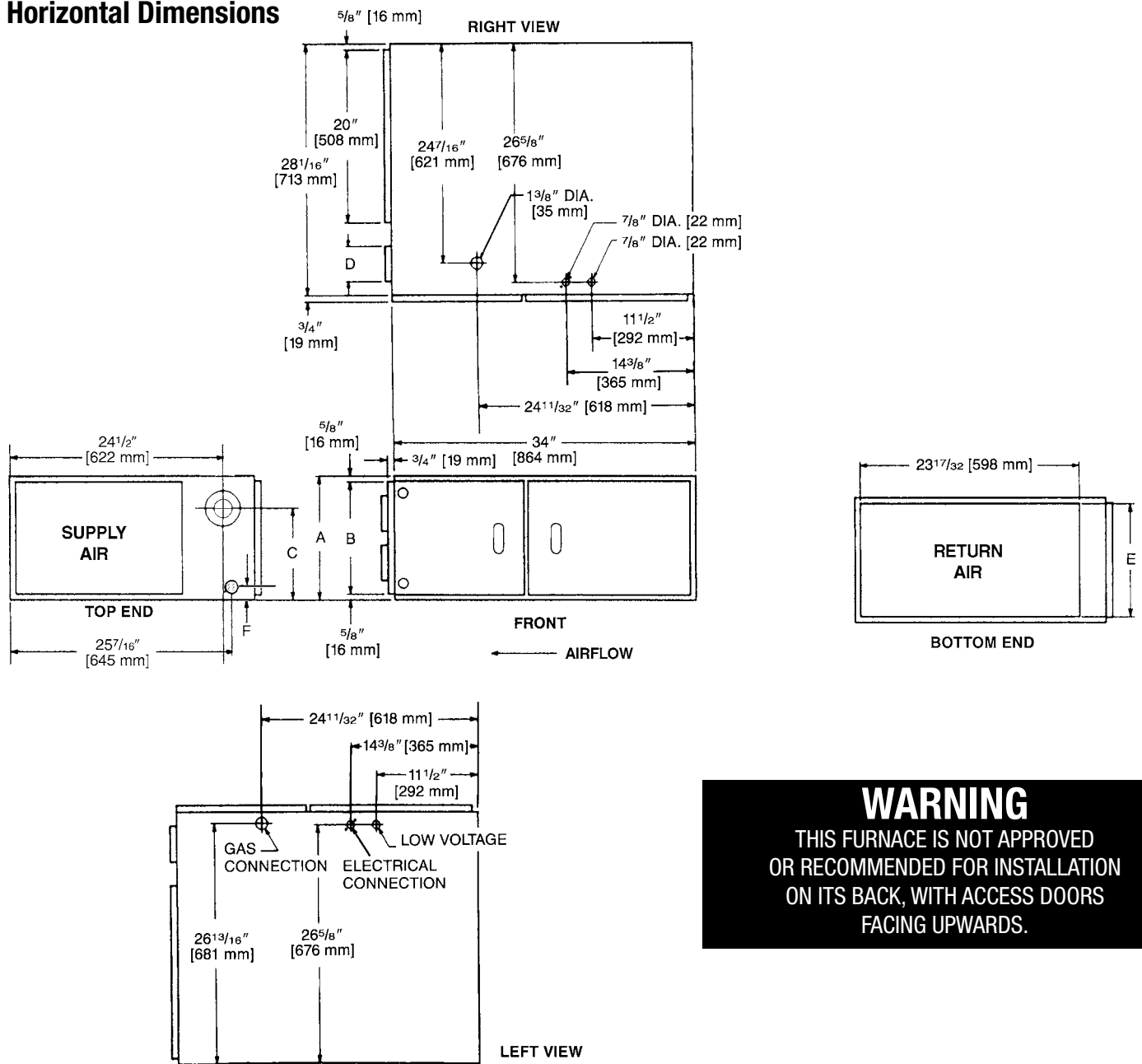
② May be 0" [0 mm] with type B vent.

③ May be 1" [25 mm] with type B vent.

Furnaces must be vented in accordance with the National Fuel Gas Code, ANSI Z223.1 and/or Can/CGA-B149 Installation Codes and in accordance with local codes.

[] Designates Metric Conversions

Horizontal Dimensions



Horizontal Dimensions and Clearance to Combustible Material (inches) [mm]

MODEL RGPQ-	A	B	C	D	E	F	REDUCED CLEARANCES (IN.) [mm]						
							LEFT SIDE	RIGHT SIDE	BACK	TOP	FRONT	VENT	SHIP. WGTs. (LBS.) [kg]
05	14 [356]	12 27/32 [326]	10 5/8 [270]	Ⓢ	11 1/2 [292]	1 7/8 [48]	0	4 [102] ②	0	1 [25]	3 [76]	6 [152] ③	85 [38.6]
07	17 1/2 [445]	16 11/32 [415]	12 3/8 [314]	Ⓢ	15 [381]	2 1/2 [64]	0	3 [76] ②	0	1 [25]	3 [76]	6 [152] ③	105 [47.6]
10 (A)	17 1/2 [445]	16 11/32 [415]	12 3/8 [314]	Ⓢ	15 [381]	2 1/2 [64]	0	3 [76] ②	0	1 [25]	3 [76]	6 [152] ③	115 [52.2]
10 (B)	21 [533]	19 27/32 [504]	14 1/8 [359]	Ⓢ	18 1/2 [470]	2 1/2 [64]	0	0	0	1 [25]	3 [76]	6 [152] ③	120 [54.4]
12	24 1/2 [622]	23 11/32 [593]	15 7/8 [403]	Ⓢ	22 [559]	2 1/2 [64]	0	0	0	1 [25]	3 [76]	6 [152] ③	140 [63.5]
15	24 1/2 [622]	23 11/32 [593]	15 7/8 [403]	Ⓢ	22 [559]	2 1/2 [64]	0	0	0	1 [25]	3 [76]	6 [152] ③	150 [68]

NOTES: ① May require a 3" [76 mm] to 4" [102 mm] or 3" [76 mm] to 5" [127 mm] adapter.

② May be 0" [0 mm] with type B vent.

③ May be 1" [25 mm] with type B vent.

Furnaces must be vented in accordance with the National Fuel Gas Code, ANSI Z223.1 and/or Can/CGA-B149 Installation Codes and in accordance with local codes.

[] Designates Metric Conversions



Blower Performance Data

MODEL NUMBER RGPQ-SERIES	BLOWER SIZE [mm]	MOTOR H.P. [W]	BLOWER SPEED	CFM [L/s] AIR DELIVERY EXTERNAL STATIC PRESSURE INCHES [kPa] WATER COLUMN						
				.1 [.02]	.2 [.05]	.3 [.07]	.4 [.10]	.5 [.12]	.6 [.15]	.7 [.17]
05*AUER	11 x 6 [279 x 152]	1/2 [373]	LOW	675 [319]	655 [309]	635 [300]	610 [288]	585 [276]	555 [262]	520 [245]
			MED-LO	950 [448]	930 [439]	905 [427]	880 [415]	860 [406]	830 [392]	800 [378]
			MED-HI	1115 [526]	1090 [514]	1070 [505]	1040 [491]	1015 [479]	985 [465]	945 [446]
			HIGH	1270 [599]	1250 [590]	1225 [578]	1200 [566]	1165 [550]	1130 [533]	1085 [512]
07*AMER	11 x 7 [279 x 178]	1/2 [373]	LOW	921 [435]	897 [423]	872 [411]	845 [399]	818 [386]	795 [375]	746 [352]
			MED-LO	1093 [563]	1066 [503]	1039 [490]	1008 [476]	977 [461]	941 [444]	905 [427]
			MED-HI	1241 [586]	1212 [572]	1183 [558]	1150 [543]	1118 [528]	1076 [508]	1033 [487]
			HIGH	1393 [657]	1359 [642]	1326 [626]	1293 [610]	1259 [594]	1214 [573]	1169 [552]
07*AMGR	11 x 7 [279 x 178]	3/4 [559]	LOW	1245 [588]	1220 [576]	1195 [564]	1165 [550]	1135 [536]	1105 [522]	1065 [503]
			MED-LO	1555 [734]	1515 [715]	1475 [696]	1435 [677]	1395 [658]	1350 [637]	1300 [614]
			MED-HI	1810 [854]	1755 [828]	1705 [805]	1645 [776]	1585 [748]	1530 [722]	1470 [694]
			HIGH	2050 [967]	1985 [937]	1915 [904]	1845 [871]	1785 [842]	1715 [809]	1655 [781]
10*AMER	11 x 7 [279 x 178]	1/2 [373]	LOW	925 [437]	890 [420]	865 [408]	835 [394]	810 [382]	775 [366]	745 [352]
			MED-LO	1050 [496]	1040 [491]	1030 [486]	990 [467]	960 [453]	920 [434]	890 [420]
			MED-HI	1220 [576]	1195 [564]	1160 [547]	1140 [538]	1105 [522]	1065 [503]	1020 [481]
			HIGH	1360 [641]	1327 [626]	1295 [611]	1263 [596]	1231 [581]	1179 [556]	1128 [532]
10*BRJR	11 x 10 [279 x 254]	3/4 [559]	LOW	1295 [611]	1275 [602]	1250 [590]	1225 [578]	1195 [564]	1165 [550]	1135 [536]
			MED-LO	1645 [776]	1615 [762]	1580 [746]	1550 [732]	1510 [713]	1465 [691]	1425 [673]
			MED-HI	2045 [965]	2000 [944]	1955 [923]	1905 [899]	1845 [871]	1785 [842]	1720 [812]
			HIGH	2320 [1095]	2260 [1067]	2200 [1038]	2130 [1005]	2060 [972]	1985 [937]	1910 [901]
12*ARJR	11 x 10 [279 x 254]	3/4 [559]	LOW	1280 [604]	1275 [602]	1265 [597]	1245 [588]	1215 [573]	1185 [559]	1145 [540]
			MED-LO	1645 [776]	1635 [772]	1615 [762]	1590 [750]	1560 [736]	1520 [717]	1470 [694]
			MED-HI	2050 [967]	2015 [951]	1960 [925]	1935 [913]	1885 [890]	1835 [866]	1775 [838]
			HIGH	2365 [1116]	2310 [1090]	2250 [1062]	2185 [1031]	2115 [998]	2035 [960]	1950 [920]
15*ARJR	11 x 10 [279 x 254]	3/4 [559]	LOW	1270 [599]	1250 [590]	1220 [576]	1195 [564]	1165 [550]	1135 [536]	1105 [522]
			MED-LO	1620 [765]	1595 [753]	1570 [741]	1545 [729]	1515 [715]	1480 [698]	1440 [680]
			MED-HI	2010 [949]	1985 [937]	1960 [925]	1915 [904]	1850 [873]	1800 [850]	1730 [816]
			HIGH	2340 [1104]	2275 [1074]	2215 [1045]	2145 [1012]	2080 [982]	2010 [949]	1940 [916]

NOTES: Data compiled with factory filters installed.
Factory Rated to 0.5" W.C.
*E = Standard
N = NOx Models

[] Designates Metric Conversions



EXTERNAL BOTTOM FILTER RACK: RXGF-CB
EXTERNAL SIDE RETURN FILTER RACK: RXGF-CA

FILTER RACK FILTER SIZES† INCHES [mm]	
MODEL RGPQ-	RXGF-CA (SIDE)
05, 07, 10*A	15 ³ / ₄ x 25 [400 x 635]
10*BRJ	15 ³ / ₄ x 25 [400 x 635]
12, 15	15 ³ / ₄ x 25 [400 x 635]

†Filter racks are shipped without filters.
Filters shipped with furnace may be used or a suitable 1" [25.4 mm] filter.
*Designates "E" or "N".

OPTION CODE FOR HIGH ALTITUDE: 278

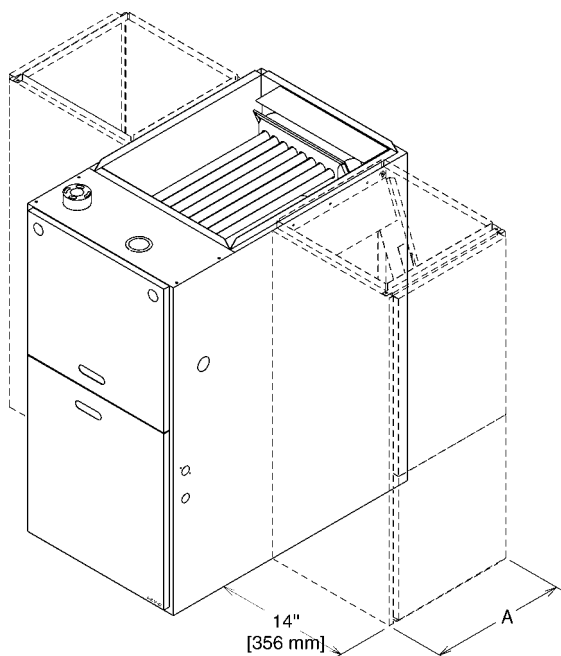
CANADA-For high altitude derate procedure, refer to furnace Installation Instructions

RXPF-F01 and F02

FOSSIL FUEL KIT—is for use with Rheem Heat Pumps and warm air furnaces. RXPF-F02 meets TVA requirements.

ACCESSORY RETURN AIR CABINETS

Return Air Cabinets may be installed on either side application except RXGR-C24B (side application must be on side opposite gas and electrical connections).



THE RXGR-C24B MUST ONLY BE INSTALLED ON THE SIDE OPPOSITE THE GAS AND ELECTRICAL CONNECTIONS.

RETURN AIR CABINETS	A IN. [mm]	FILTER SIZE IN. [mm]
RXGR-C14B	14 [356]	(2) 12 x 16 [305 x 406]
RXGR-C17B	17 ¹ / ₂ [445]	(2) 12 x 16 [305 x 406]
RXGR-C21B	21 [533]	(2) 20 x 16 [508 x 406]
RXGR-C24B	24 ¹ / ₂ [622]	(2) 24 x 16 [610 x 406]

WARNING: IMPORTANT NOTICE

A SOLID METAL BASE PLATE (SEE TABLE) MUST BE IN PLACE WHEN THE FURNACE IS INSTALLED WITH SIDE AIR RETURN DUCTS. FAILURE TO INSTALL A BASE PLATE COULD CAUSE PRODUCTS OF COMBUSTION TO BE CIRCULATED INTO THE LIVING SPACE AND CREATE POTENTIALLY HAZARDOUS CONDITIONS.

FURNACE WIDTH IN. [mm]	SOLID BOTTOM KIT NO.	BASE PLATE NO.	BASE PLATE SIZE IN. [mm]
14 [356]	RXGB-D14	AE-61874-01	11 ⁵ / ₈ x 23 ⁹ / ₁₆ [295 x 598]
17 ¹ / ₂ [445]	RXGB-D17	AE-61874-02	15 ¹ / ₈ x 23 ⁹ / ₁₆ [384 x 598]
21 [533]	RXGB-D21	AE-61874-03	18 ⁵ / ₈ x 23 ⁹ / ₁₆ [473 x 598]
24 ¹ / ₂ [622]	RXGB-D24	AE-61874-04	25 ⁵ / ₈ x 23 ⁹ / ₁₆ [651 x 598]

[] Designates Metric Conversions

GENERAL TERMS OF LIMITED WARRANTY*

Rheem will furnish a replacement for any part of this product which fails in normal use and service within the applicable period stated, in accordance with the terms of the limited warranty.

***For complete details of the Limited and Conditional Warranties, including applicable terms and conditions, contact your local contractor or the Manufacturer for a copy of the product warranty certificate.**

Gas Heat Exchanger Limited WarrantyLimited Lifetime
Conditional Parts* (Registration Required)Ten (10) Years



The new degree of comfort.™

In keeping with its policy of continuous progress and product improvement, Rheem reserves the right to make changes without notice.

Rheem Heating, Cooling & Water Heating • P.O. Box 17010
Fort Smith, Arkansas 72917 • www.rheem.com

Rheem Canada Ltd./Ltée • 125 Edgeware Road, Unit 1
Brampton, Ontario • L6Y 0P5



INTEGRATED HOME COMFORT

PRINTED IN U.S.A 10/13 QG FORM NO. G11-514 REV. 1