

Technical Service Bulletin #C1115

For unit experiencing Abnormal Ignition



Grand Hall USA, Inc. 3838 West Miller Road Garland, Texas 75041 TEL 866 946 1096 FAX 972 279 8440 www.eternalwaterheater.com

Applicable Models:

GU145(S), GU195(S), GU195(M)

Description:

Ignition Service Kit (PN#314070199) is developed to help remedy units experiencing abnormal ignition due to different gas heating values, improper air & gas mixing ratio or insufficient air velocity for both sea level and high altitude.

Kit includes:

Air tube (with orifice insert) & Longer Gas Tube

Intake Orifice (PN#152140230) is developed to balance gas/air mix ratio for units installed at elevations above 3,000ft on Natural Gas. This Intake Orifice can remedy rough ignitions experienced across various high altitude installation environments.

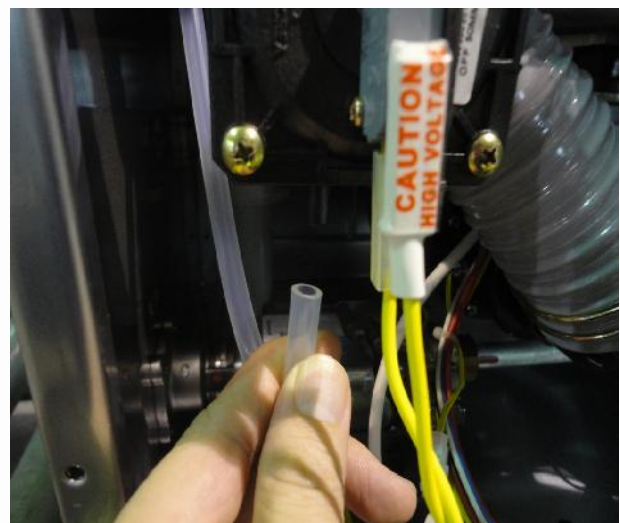
Unit serial number/solution reference table:

	LP at Sea Level	LP at elevation above 3,000ft	NG at Sea Level	NG at elevation above 3,000ft
G902367 - G1101156	Intake Orifice	Intake Orifice	None	None
G1101156 - G1111021	Ignition Service Kit	Ignition Service Kit	Ignition Service Kit	Ignition Service Kit + Intake Orifice
G1111022 - G1116163	Ignition Service Kit	Ignition Service Kit	Ignition Service Kit	Ignition Service Kit + Intake Orifice
G1116164 onward	None	Ignition Service Kit	None	Intake Orifice

Ignition service kit Installation Instruction:

Take the cover off the unit and turn off all water, gas and electrical supplies to the unit.

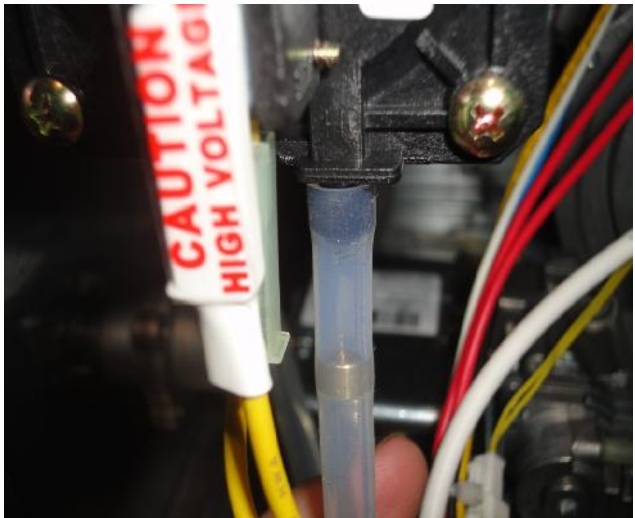
Remove the original air tube in the unit off the Air Pressure Switch and from the back side of Fan Motor.



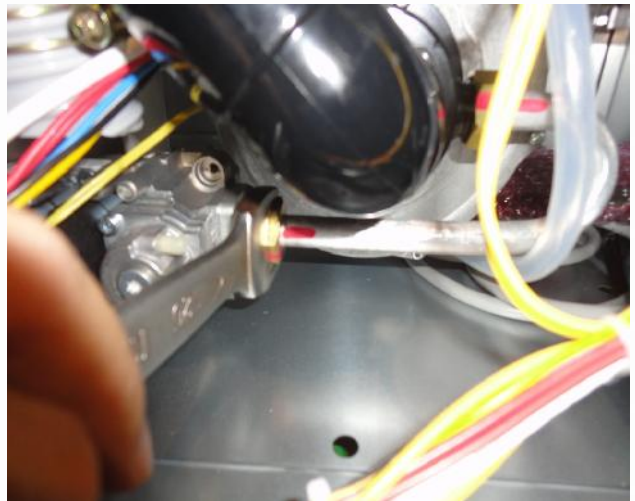
Install the new air tube from the kit to the back of Fan motor (the end with no brass orifice).



Connect the other end of the air tube (with brass orifice) to the Air Pressure Switch port marked with (H).



Loosen the nut connecting the gas tube on both the Gas Valve and the Fan Motor with 10" crescent wrench.

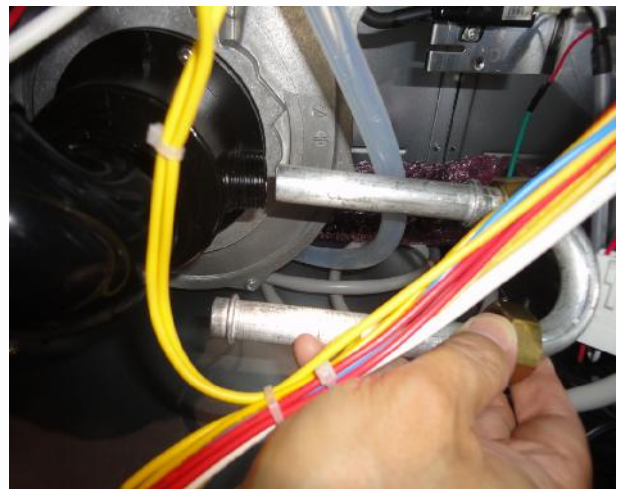


Inspect the gas tube for length. If the tubes look like one of the two longer tubes to photo on the right, please keep and re-install.

If the gas tube looks like the short one to the photo on the right, please discard and install the longer gas tubes from the kit.



Tighten the nut that connects the gas tube to both the Gas Valve and the Fan Motor with 10" crescent wrench. Do not over tighten or you will damage the aluminum gas tube. Turn on all water, gas and electrical to unit and test ignition.



Intake orifice installation Instructions:

Take the cover off the unit and turn off all water, gas and electrical supplies to the unit.

Loosen the screw on the silencer tube.



Insert Intake Orifice at silencer elbow.

The Intake Orifice should be positioned between the elbow and the flexible silencer tube.

Reconnect silencer tube with elbow and tighten the screw.

Turn on all water, gas and electrical to unit and test ignition.

